



# Toshiba Satellite C55D-A5201 Keyboard Replacement

Replace a keyboard that is not responding.

Written By: Kari Byrd



# INTRODUCTION

This guide teaches you how to remove your keyboard. Reverse the steps to replace with a new keyboard.



## TOOLS:

- [iFixit Opening Tools](#) (1)
- [Tweezers](#) (1)
- [Phillips #00 Screwdriver](#) (1)



## PARTS:

- [Toshiba Satellite C55D-A5201 Keyboard](#) (1)

## Step 1 — Battery



- Close the laptop, and flip it upside down. You want the spine to be furthest away from you.

## Step 2



- Release the locking mechanism by switching the left slider to the left.



## Step 3



- Slide the right slider to the right, and simultaneously, pull the battery out at a diagonal angle.

## Step 4 — Keyboard



- Remove the 3mm Phillips #00 screw holding the keyboard in place.

## Step 5



- Flip over and open the laptop.

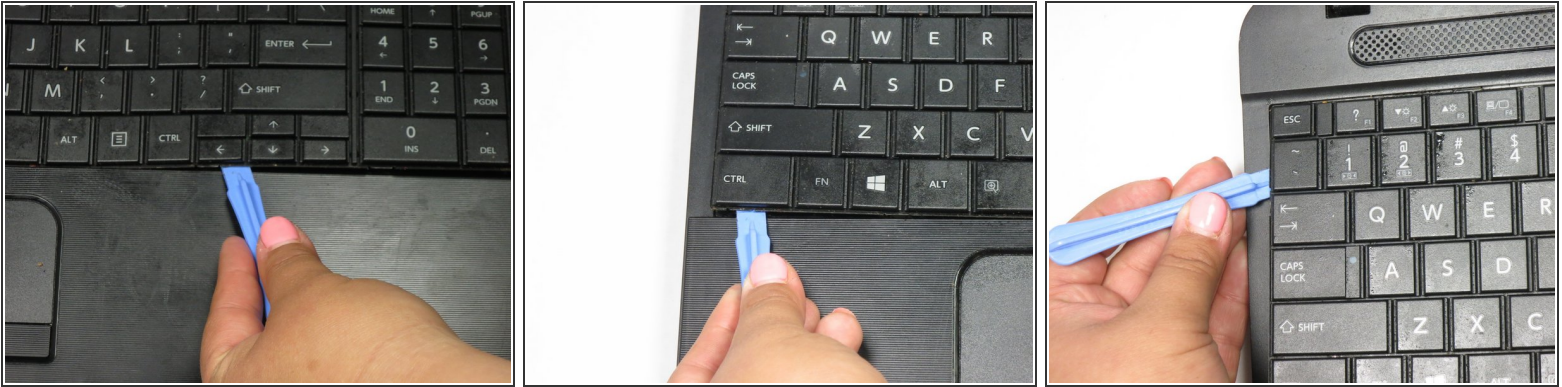
## Step 6



- Slip the plastic opening tool under the "Enter" key on the right corner of the keyboard.
- Lift the plastic opening tool up until the corner of the keyboard is detached.
- ❗ You will hear a popping sound as each portion of the keyboard becomes detached.



## Step 7



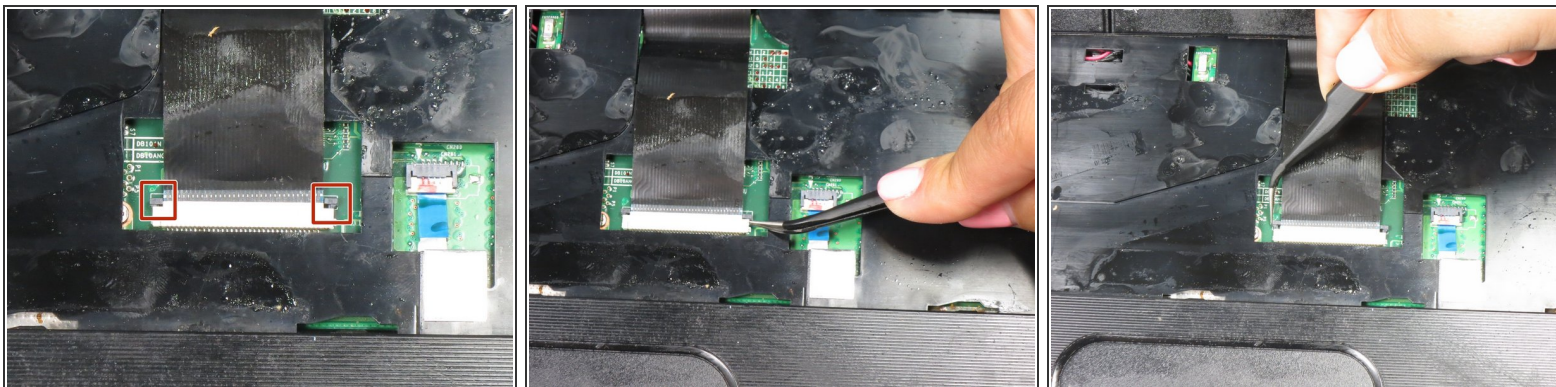
- Slide the plastic opening tool slowly along the bottom of the keyboard towards the left.
- Continue up the left side of the keyboard.

## Step 8



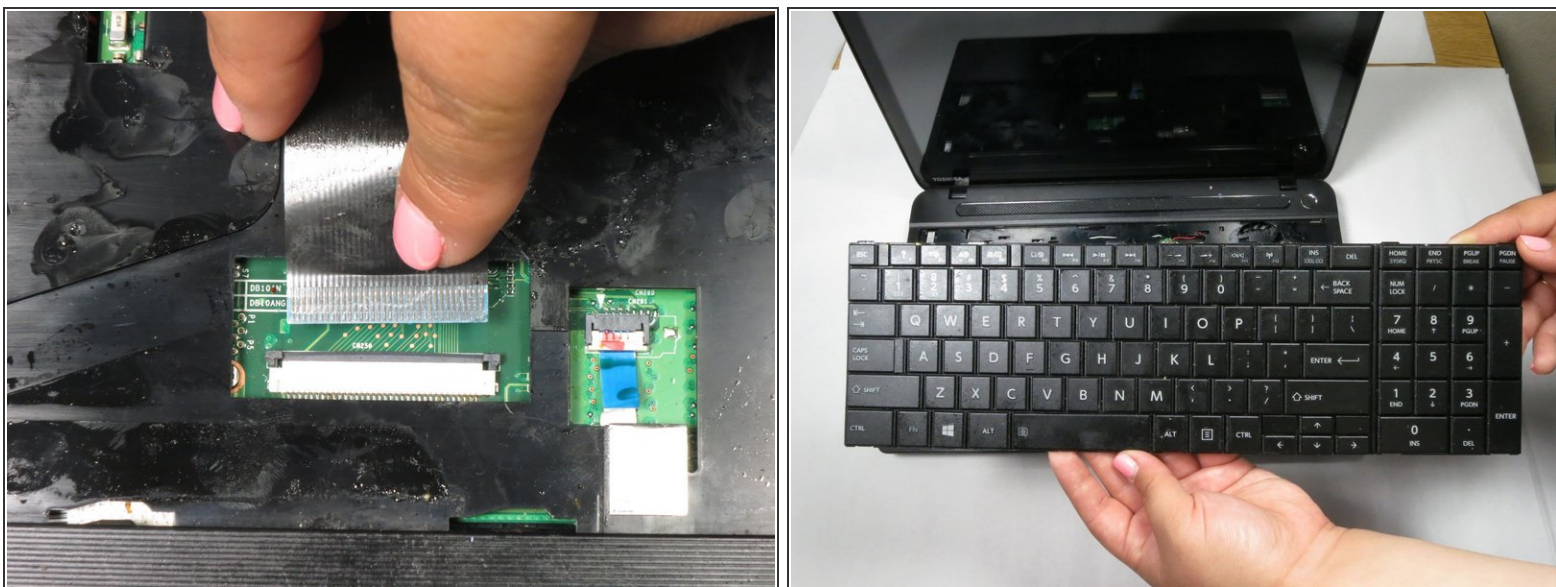
- Lift the keyboard up by grabbing it on both sides.
- Set the keyboard against the laptop screen.

## Step 9



- Using tweezers, push up the two black switches on either side of the ZIF connector.

## Step 10



- Pull out the ZIF connector to release the keyboard.
- Lift up the keyboard.

To reassemble your device, follow these instructions in reverse order.