



Toshiba Satellite C55D-B5206 CD Drive Replacement

Step-by-step guide to replace the CD Drive of the Toshiba Satellite C55D

Written By: Tayyaba



INTRODUCTION

This guide will show you how to easily remove a CD drive to clean it or replace it with a new one. Do not be intimidated by the size of the CD-ROM drive, it is fairly easy to remove.

TOOLS:

- [Phillips #1 Screwdriver](#) (1)
 - [Spudger](#) (1)
 - [iFixit Opening Tools](#) (1)
-

Step 1 — Battery



- Turn the laptop upside down so the battery faces upwards.
- Remove the two 7 mm Phillips screws that secure the battery.

Step 2



- Place your thumbs on both sides of the battery's edges where the battery meets the device
- Push the battery away from the laptop.
- ❗ The battery should slide out with little resistance.

Step 3 — Back Casing





- Remove the thirteen 7 mm Phillips #1 screws from the bottom of the chassis.

Step 4



- Starting at the center, insert a spudger into the crevice between the bottom casing and the keyboard and pry upwards.
- Gently slide the spudger along the entire perimeter of the device and pry the casing loose to unhook six clips.

 These images show a metal spudger, which has the potential to damage the device. Use a plastic opening tool or standard spudger instead.

 Do not be alarmed if you feel a gentle tug or hear a click as you slide your spudger. These sounds are the clips detaching from the casing.

Step 5



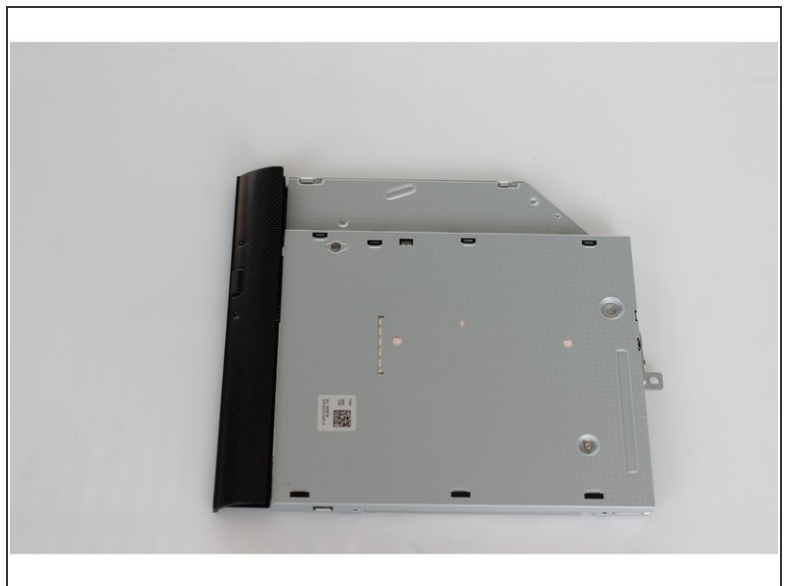
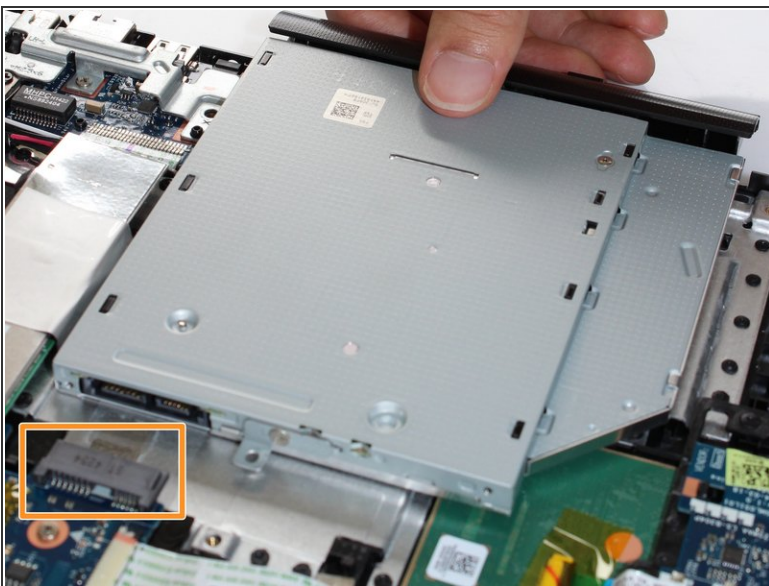
- Use your fingers to finish removing the casing from the device.

Step 6 — CD Drive



- The 7 mm Philips#1 screw has been removed in the back casing removal.
- Place thumb on the edge of the CD-ROM drive.
- Gently slide the CD-ROM drive towards your palm.

Step 7



- Lift away the CD-ROM drive.
- You should feel the CD-ROM drive detach from the connector port.
- ⓘ The drive should slide out and lift away with little resistance. There is no need to slide the drive roughly.

This document was generated on 2019-10-01 03:27:02 PM (MST).

To reassemble your device, follow these instructions in reverse order.