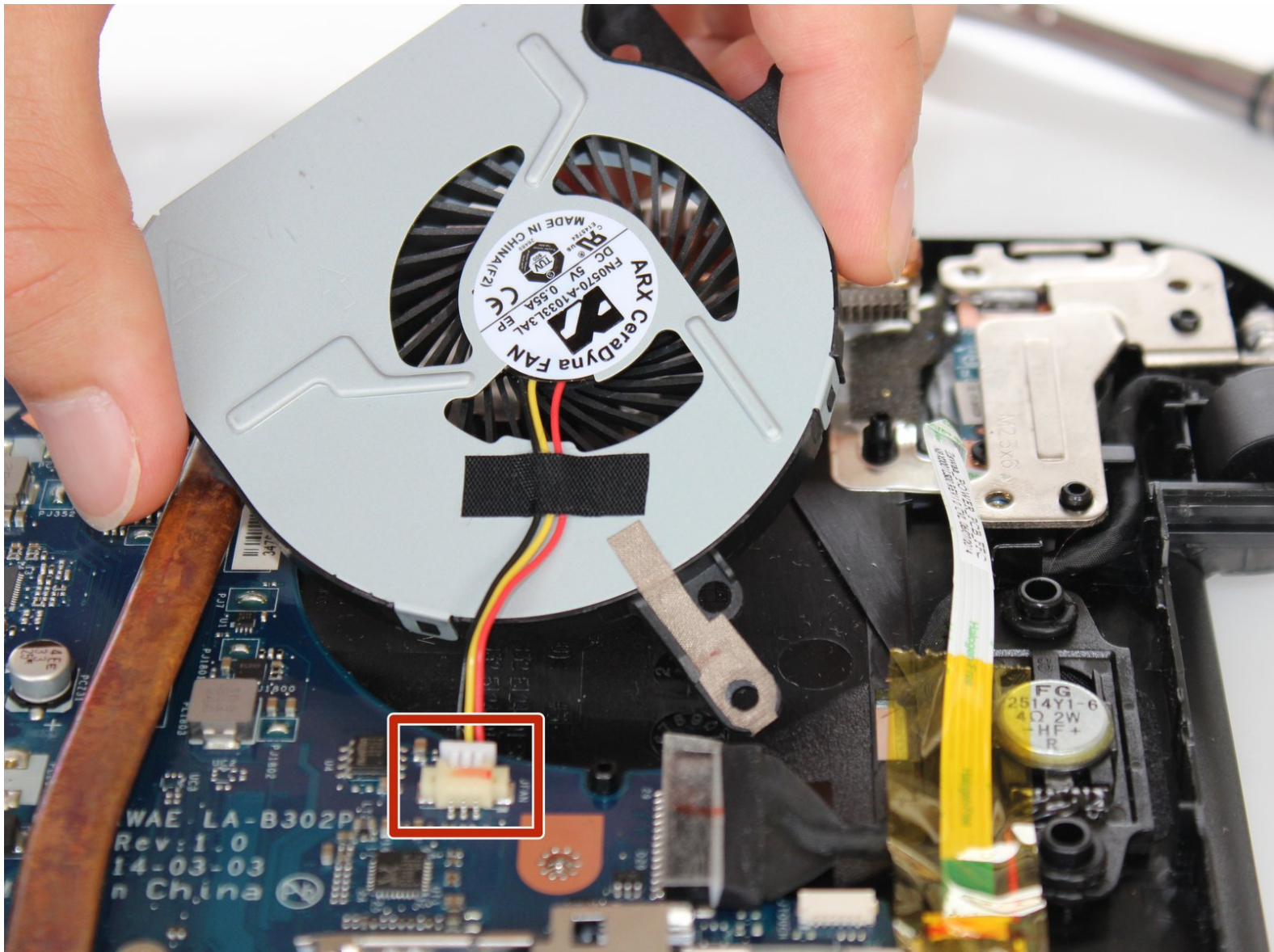




Toshiba Satellite C55D-B5206 Fan Replacement

Step by step guide on how to replace the fan

Written By: Tayyaba



INTRODUCTION

The fan of your Toshiba Satellite C55D device may malfunction at some point. If your constantly heats up shuts down, that indicates the fan has malfunctioned. This manual will provide a step-by-step guide to replace the fan,



TOOLS:

- [Spudger](#) (1)
 - [Phillips #1 Screwdriver](#) (1)
-

Step 1 — Battery



- Turn the laptop upside down so the battery faces upwards.
- Remove the two 7 mm Phillips screws that secure the battery.

Step 2



- Place your thumbs on both sides of the battery's edges where the battery meets the device
- Push the battery away from the laptop.
- i** The battery should slide out with little resistance.

Step 3 — Back Casing



- Remove the thirteen 7 mm Phillips #1 screws from the bottom of the chassis.

Step 4

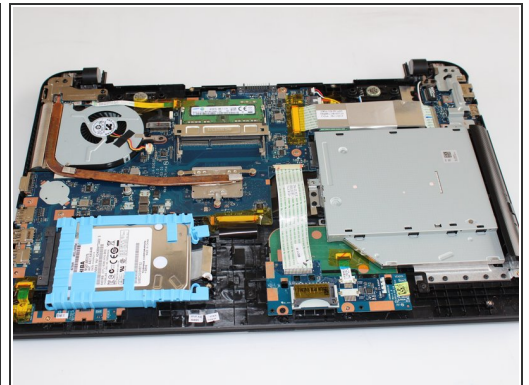


- Starting at the center, insert a spudger into the crevice between the bottom casing and the keyboard and pry upwards.
- Gently slide the spudger along the entire perimeter of the device and pry the casing loose to unhook six clips.

⚠ These images show a metal spudger, which has the potential to damage the device. Use a plastic opening tool or standard spudger instead.

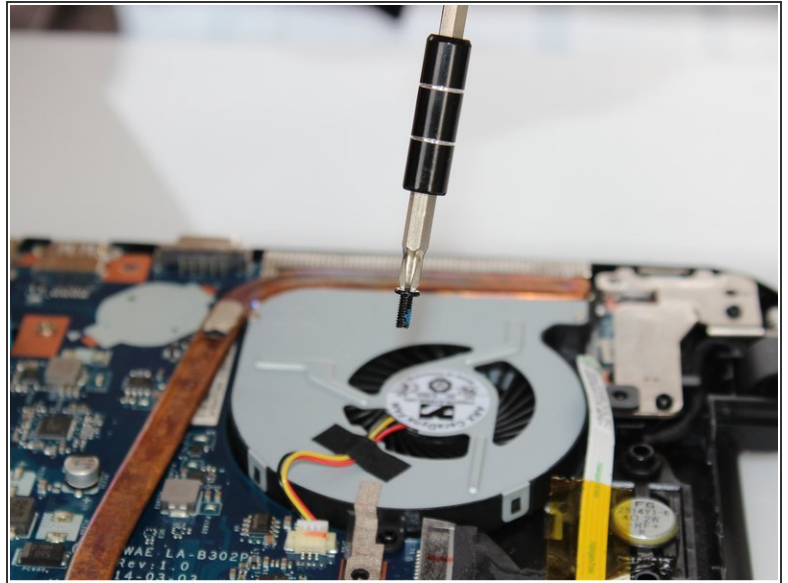
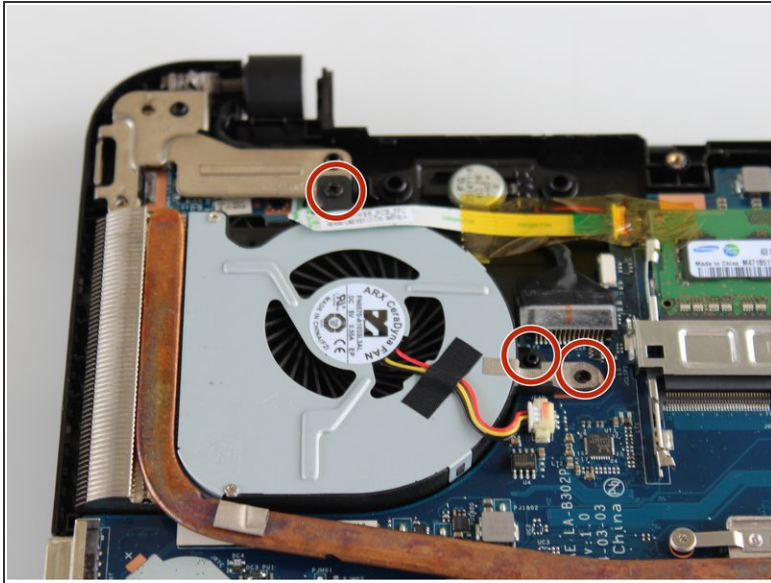
i Do not be alarmed if you feel a gentle tug or hear a click as you slide your spudger. These sounds are the clips detaching from the casing.

Step 5



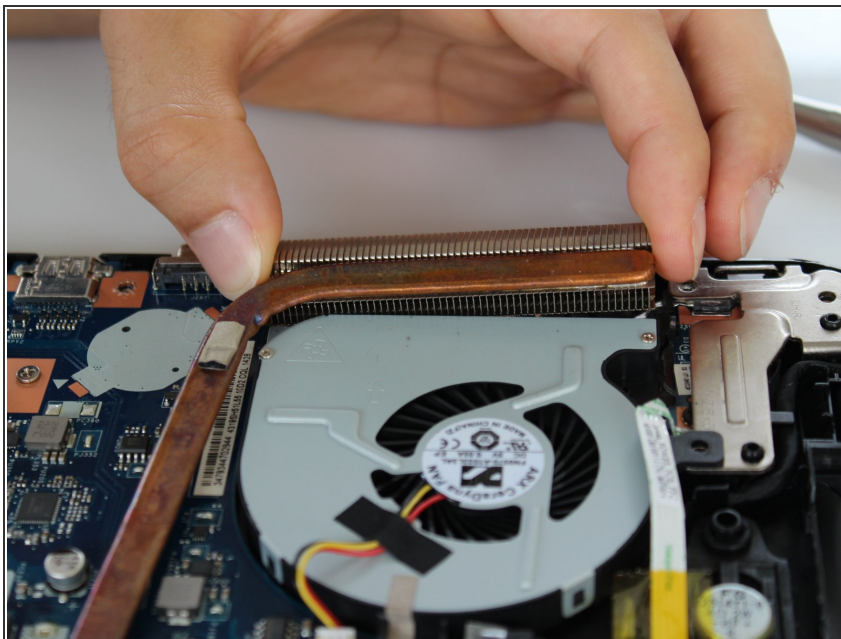
- Use your fingers to finish removing the casing from the device.

Step 6 — Fan



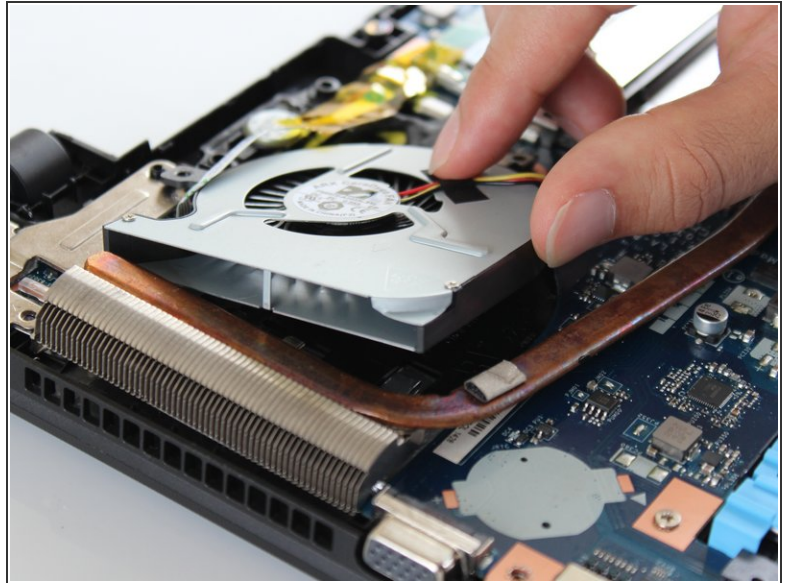
- Remove the three 7 mm Philips head screws by turning the screws counter clockwise.

Step 7



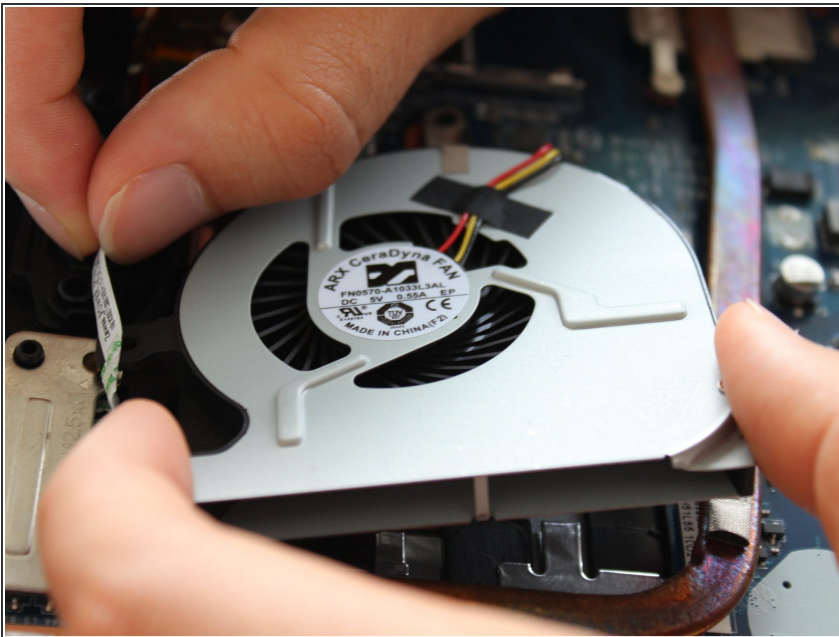
- Gently lift the copper heat sink to make the fan more accessible.
- ⓘ The copper heat sink should not detach. Do not pull on it too hard.

Step 8




- Maneuver the fan's bottom left corner above the copper heat sink.

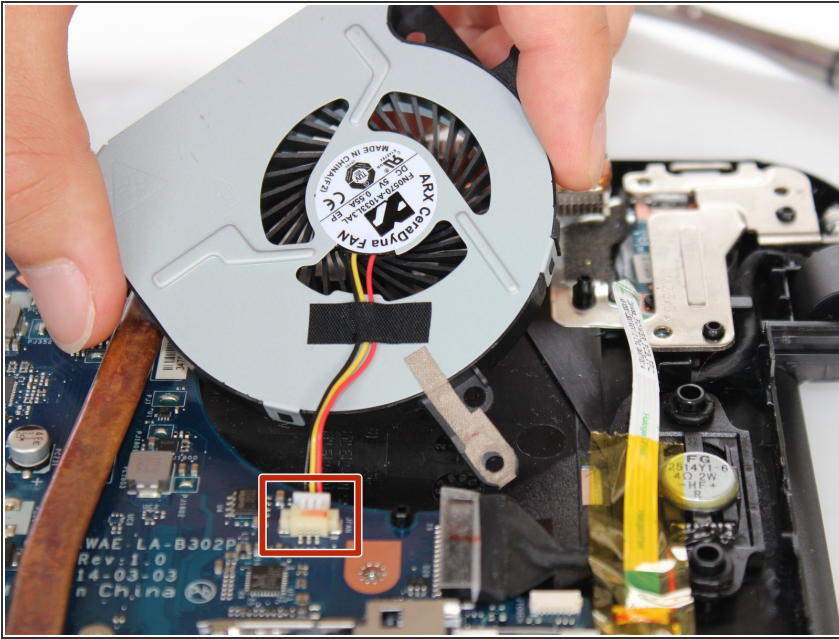
Step 9



- Cautiously move the white cable cover to allow for the fan to be lifted away.

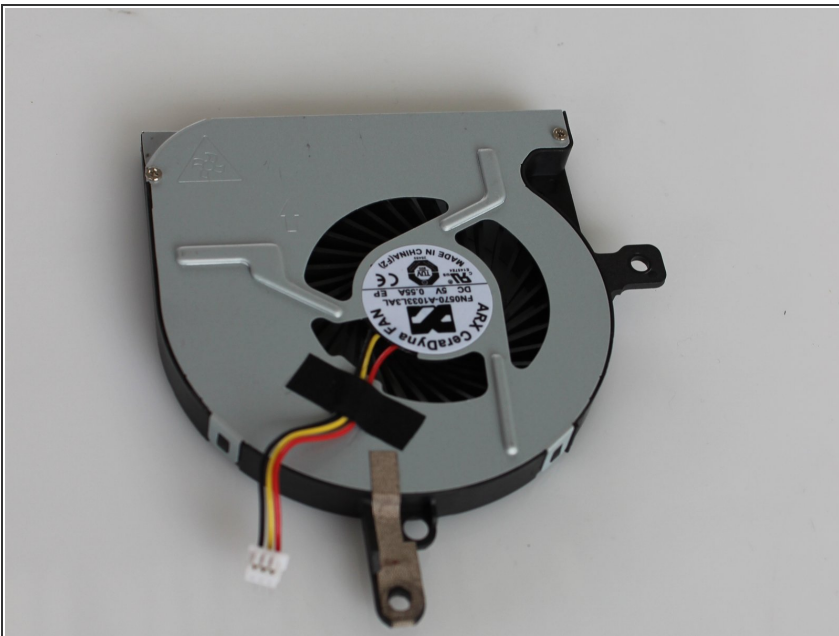
 Do not detach the white cable cover.

Step 10



- Lift the fan approximately one inch upward from back of the laptop.
- Detach the white cable connector from the connective port.

Step 11



- Once the cable port is detached, lift the fan free from the device.

To reassemble your device, follow these instructions in reverse order.