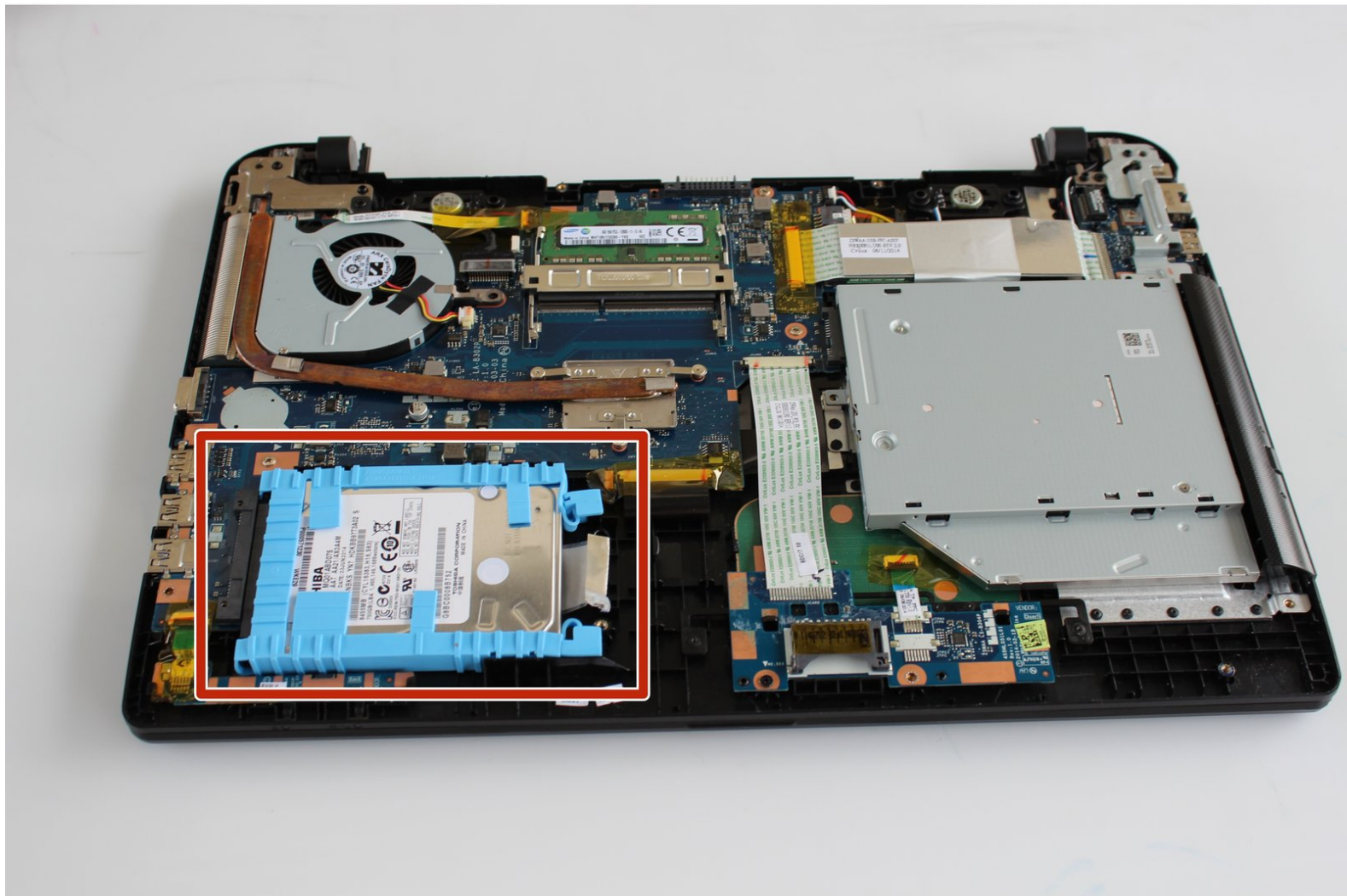




# Toshiba Satellite C55D-B5206 Hard Drive Replacement

We provide a step-by-step guide to replace the hard disk drive of a Toshiba Satellite C55D device.

Written By: Michelle



## INTRODUCTION

Hard disks may crash after long periods of use. In the event your hard drive crashes, or you simply desire to upgrade to a solid state drive. Replacing the hard drive is moderately easy and requires a few simple steps.



### TOOLS:

- [Metal Spudger](#) (1)
  - [Phillips #1 Screwdriver](#) (1)
-

## Step 1 — Battery



- Turn the laptop upside down so the battery faces upwards.
- Remove the two 7 mm Phillips screws that secure the battery.

## Step 2



- Place your thumbs on both sides of the battery's edges where the battery meets the device
- Push the battery away from the laptop.
- i** The battery should slide out with little resistance.

## Step 3 — Back Casing



- Remove the thirteen 7 mm Phillips #1 screws from the bottom of the chassis.



## Step 4

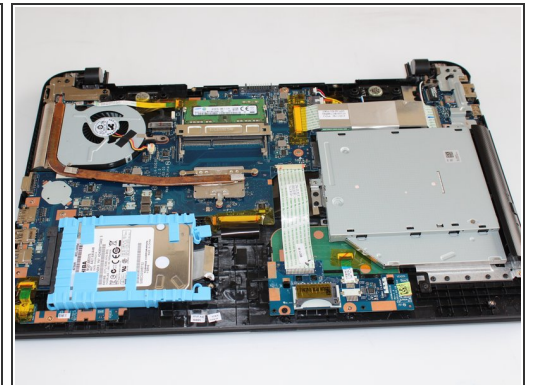


- Starting at the center, insert a spudger into the crevice between the bottom casing and the keyboard and pry upwards.
- Gently slide the spudger along the entire perimeter of the device and pry the casing loose to unhook six clips.

⚠ These images show a metal spudger, which has the potential to damage the device. Use a plastic opening tool or standard spudger instead.

i Do not be alarmed if you feel a gentle tug or hear a click as you slide your spudger. These sounds are the clips detaching from the casing.

## Step 5



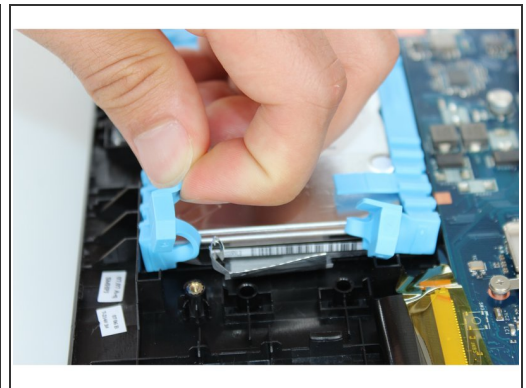
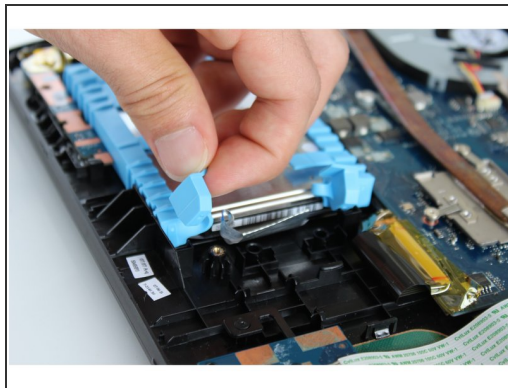
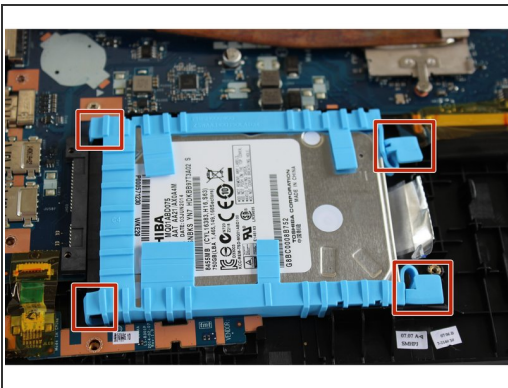
- Use your fingers to finish removing the casing from the device.

## Step 6 — Hard Drive



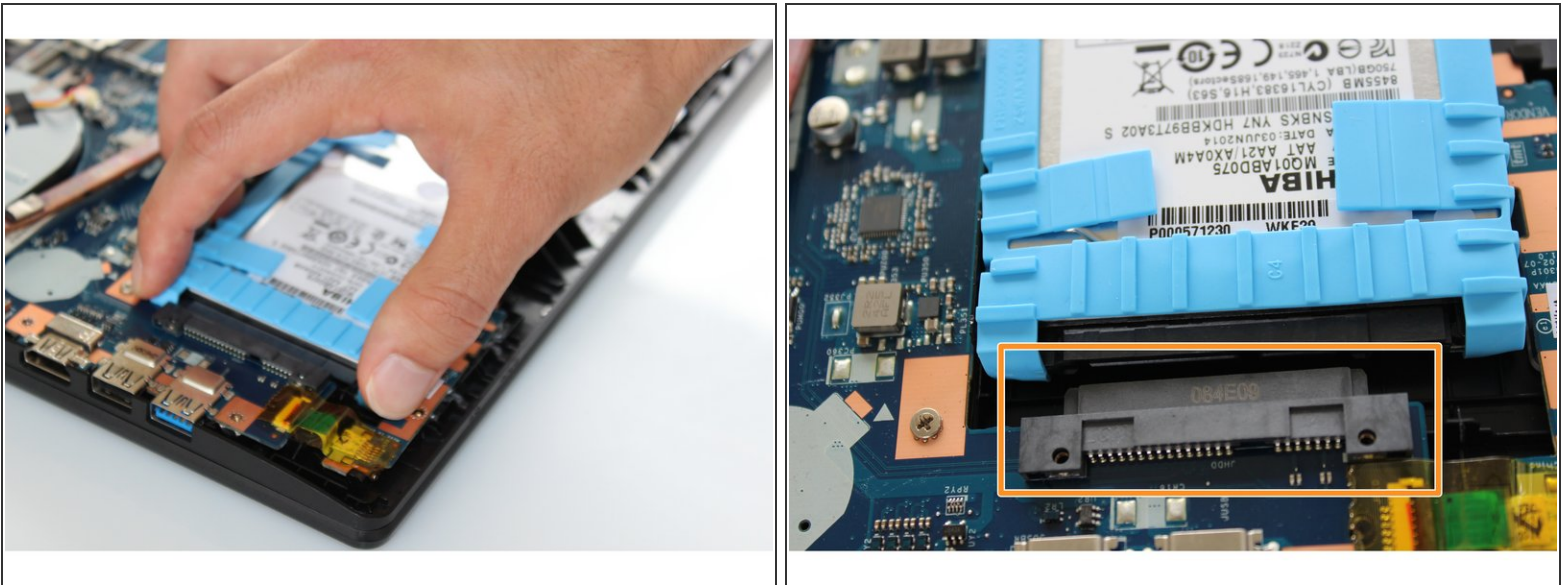
- Once the device is open from the bottom, look for the bright blue plastic frame which encases the hard drive

## Step 7



- Locate the four side plugs of the blue plastic casing which secure the hard drive in place.
- Unplug the four clips by gently pulling them upward.

## Step 8



- Gently slide the hard disk towards the right side of your laptop.
- The hard disk drive should now be free from the black connector port.

## Step 9



- Gently lift the hard drive upward, removing it from the Toshiba device.
- The hard disk should now be completely removed from the Toshiba Satellite C55D device.

To reassemble your device, follow these instructions in reverse order.