



Toshiba Satellite C55Dt-A5306 CMOS Battery Replacement

This guide will show users how to replace the CMOS battery.

Written By: Nahrain Putris



INTRODUCTION

This guide will show users how to replace the CMOS battery.



TOOLS:

- [Phillips #0 Screwdriver](#) (1)
 - [Spudger](#) (1)
-

Step 1 — Battery



- Place fingers on the latches and slide outwards to unlock.

Step 2



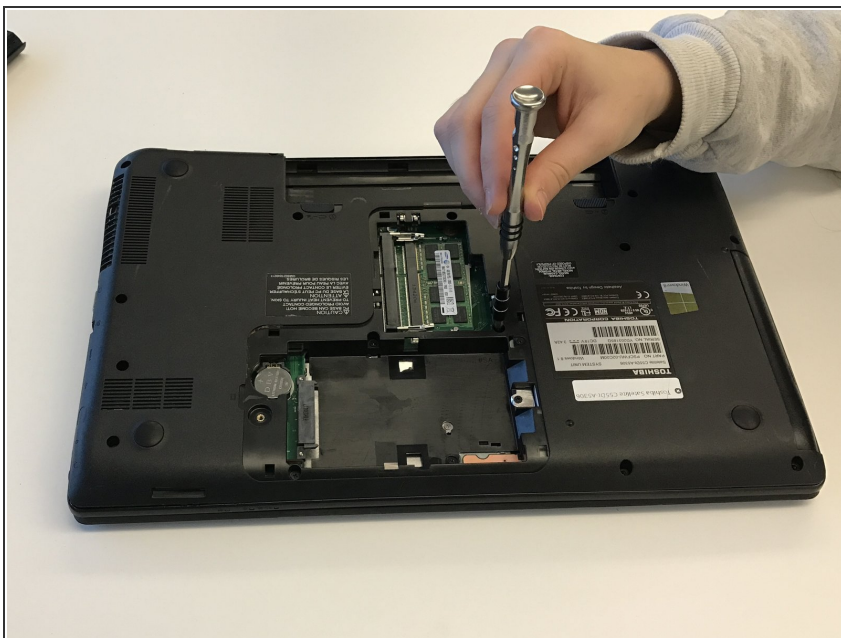
- Remove battery.

Step 3 — CMOS Battery



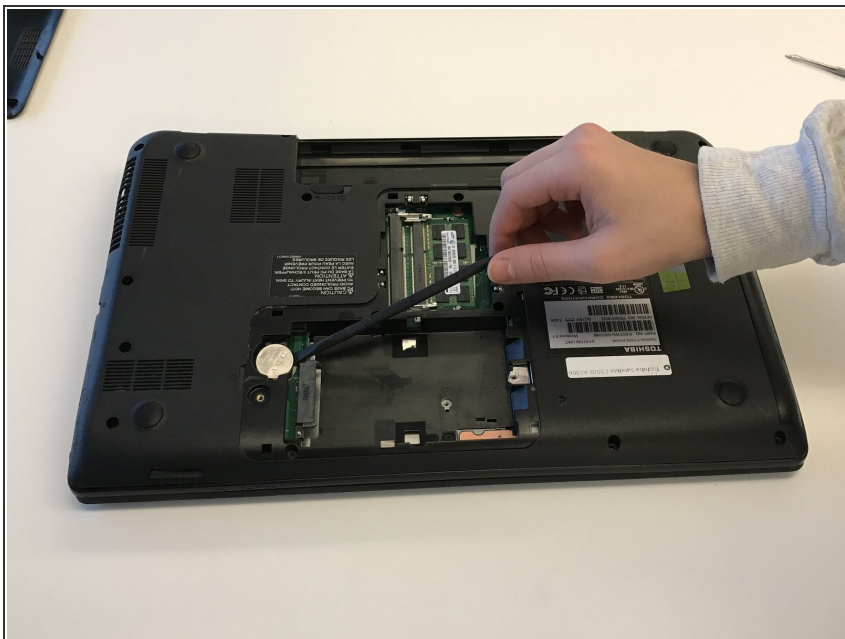
- Using the Phillips Head #0 Screwdriver, remove one 3mm Phillips #0 screw as indicated.

Step 4



- Remove hard drive cover.

Step 5



- Using the plastic spudger, remove the CMOS battery, which had the letters DBV on it.

Step 6



- Replace CMOS battery.

To reassemble your device, follow these instructions in reverse order.