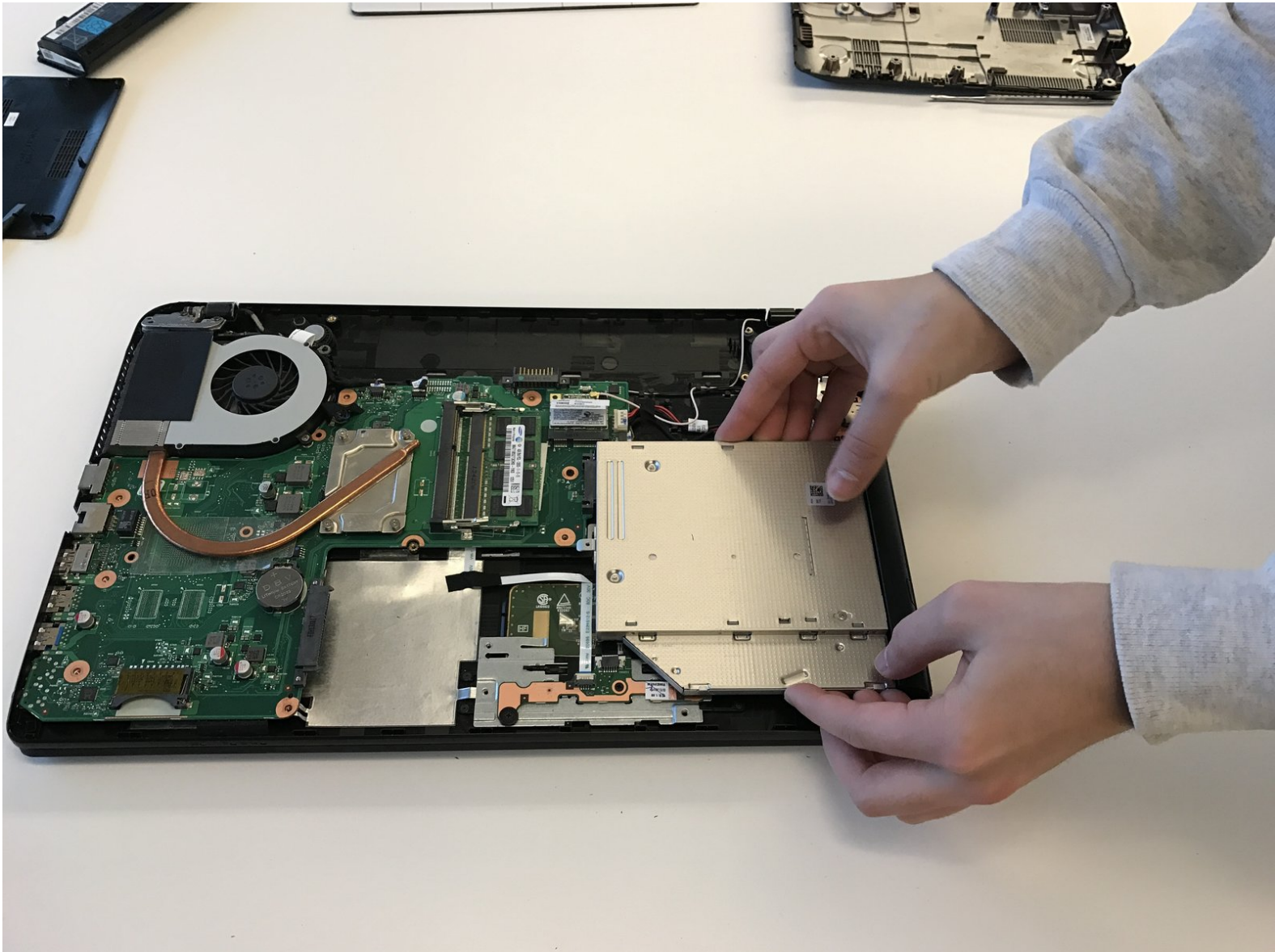




# Toshiba Satellite C55Dt-A5306 Disc Drive Replacement

This guide will show users how to replace the Toshiba Satellite C55Dt-A5306 disc drive.

Written By: zeena qiryaqoz



---

# INTRODUCTION

This guide will show users how to replace the Toshiba Satellite C55Dt-A5306 disc drive.

---



## TOOLS:

- [Spudger](#) (1)
  - [Phillips #0 Screwdriver](#) (1)
-

## Step 1 — Battery



- Place fingers on the latches and slide outwards to unlock.

## Step 2



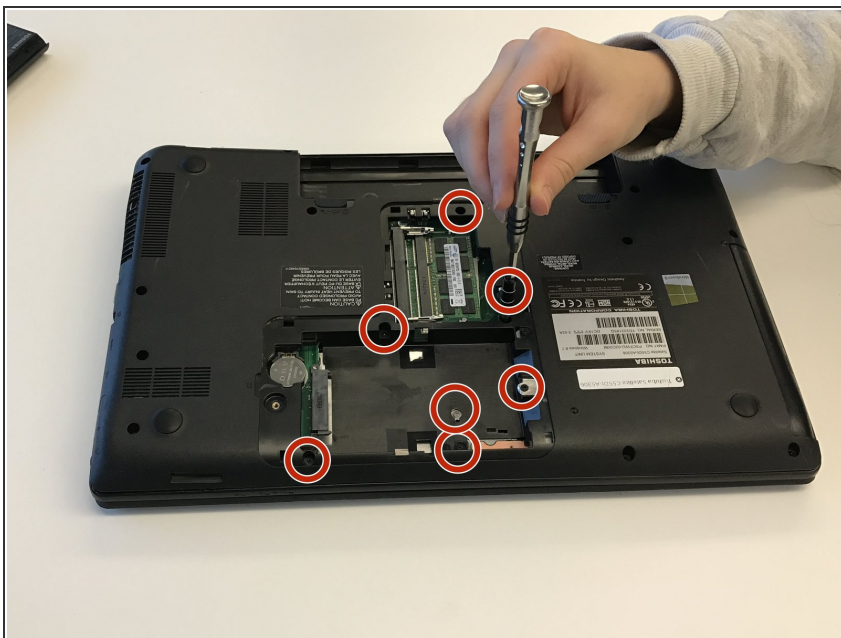
- Remove battery.

### Step 3 — Back Cover



- Using the Phillips Head #0 Screwdriver, remove one 3mm Phillips #0 screw as indicated.

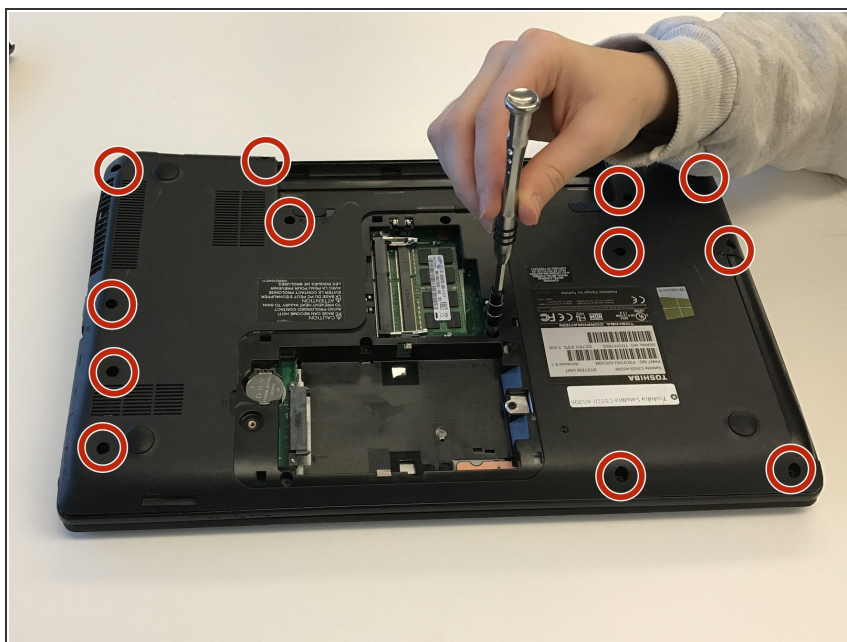
### Step 4



- Remove hard drive cover. Using the Phillips Head #0 Screwdriver, remove seven 3mm Phillips #0 screws as indicated.

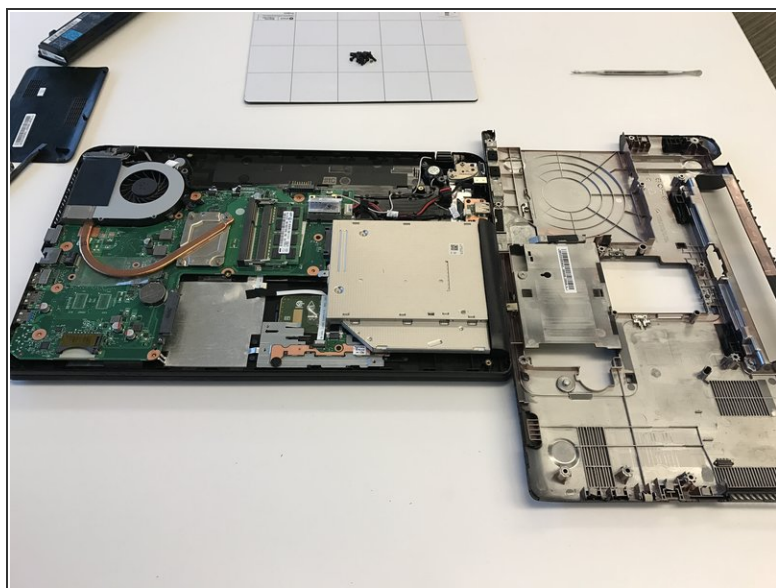


## Step 5



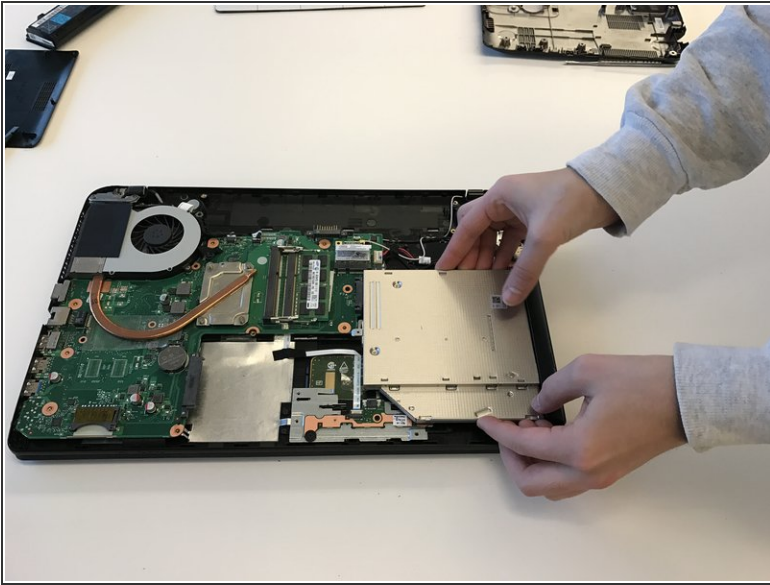
- Using the Phillips Head #0 Screwdriver, remove twelve 3mm Phillips #0 screw as indicated.

## Step 6



- Using the plastic spudger, pry the back off along the periphery of the laptop.

## Step 7 — Disc Drive



- Slide the disc drive to the left. It should come off with ease.

To reassemble your device, follow these instructions in reverse order.