



# Toshiba Satellite C655-S5142 Keyboard Replacement

This step by step guide will allow the user to disassemble the keyboard from a Toshiba Satellite C655-S5142.

Written By: Alex Kozlowski



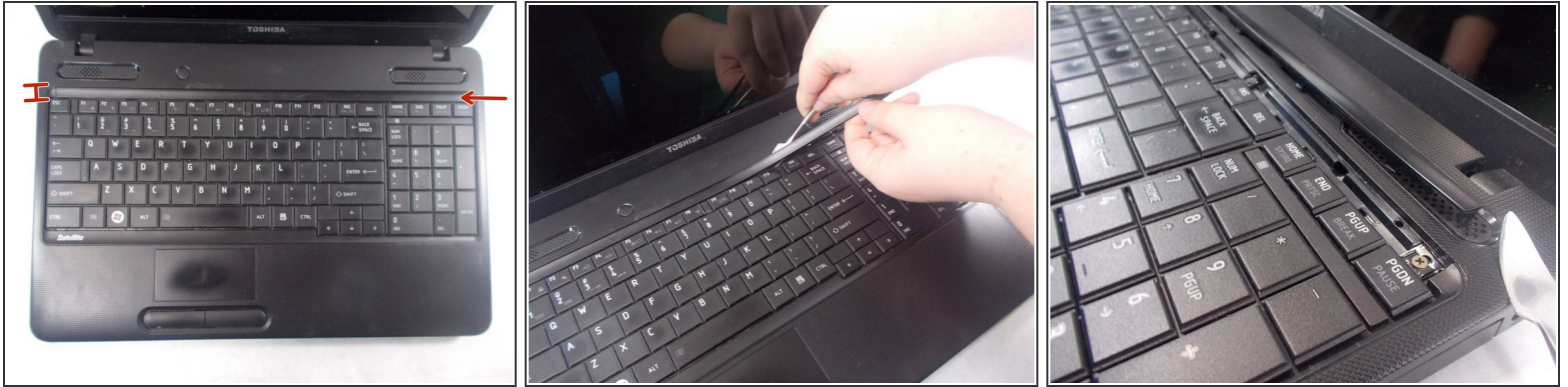



## TOOLS:


- [Phillips #0 Screwdriver](#) (1)
  - [Metal Spudger](#) (1)
-



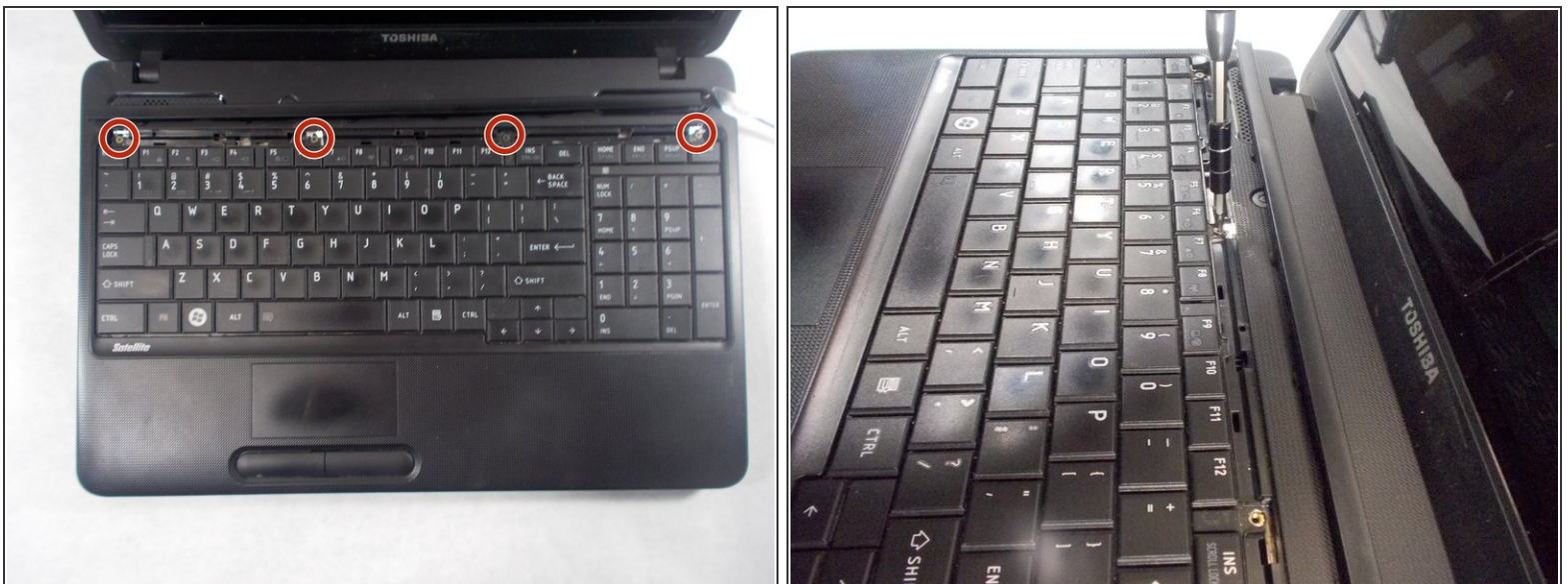
## Step 1 — Keyboard



 Unplug your computer, and make sure that it is shut off before starting

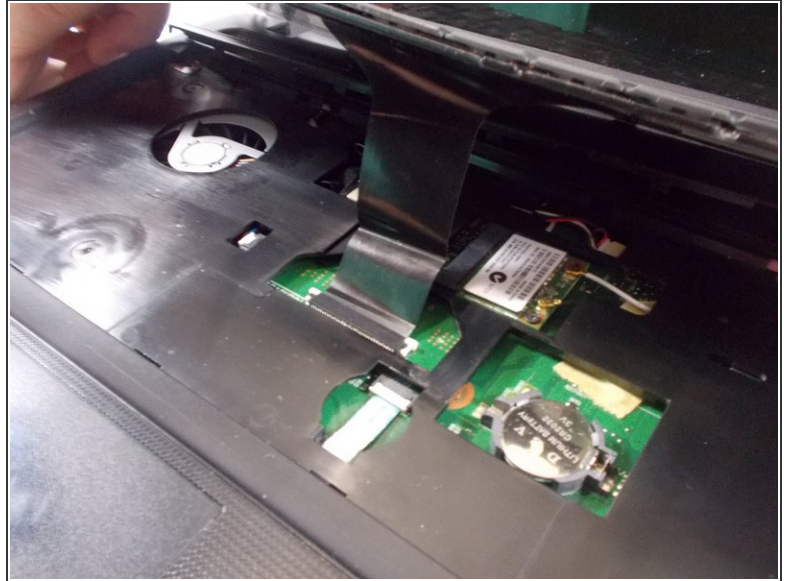
- Using the metal spudger, gently insert it under the plastic covering slowly easing it up until the screws are revealed.
-  The plastic covering will make clicking sounds when being removed this is normal, you are not breaking it.

## Step 2



- Using a phillips head screwdriver, unscrew each of the four screws.

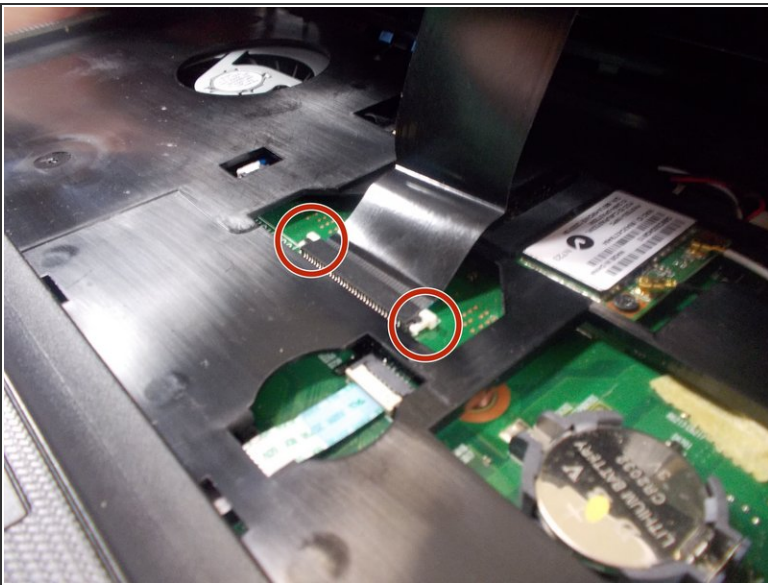
### Step 3



- Gradually lift the keyboard up, it will reveal the connector cable.

⚠ Do not pull the keyboard away too hard, this may damage the connector.

### Step 4



- With the keyboard resting up, pull the tabs to disconnect the cable from the laptop.

To reassemble your device, follow these instructions in reverse order.