



Toshiba Satellite C655-S5212 LCD Screen Replacement

Step by step guide to removing a broken or bad LCD screen

Written By: Barrington Edman



INTRODUCTION

This is a guide on how to remove a LCd screen from 15" Toshiba Satellite Laptop. Model # C655-S5212



TOOLS:

- [Phillips #00 Screwdriver](#) (1)
 - [iFixit Tech Knife](#) (1)
-

Step 1 — LCD Screen



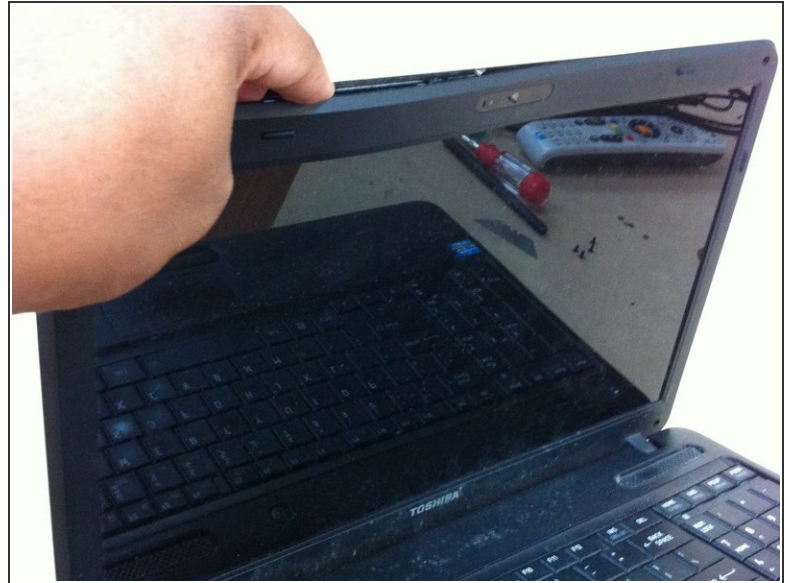
- First remove the stickers covers the screws in the 4 corners of LCD case. Stickers are very thin and using utility knife is easiest way to remove without damaging them. **After removing stickers unscrew top 2 screws then proceed to Step 2 before trying to remove bottom 2 screws.**

Step 2



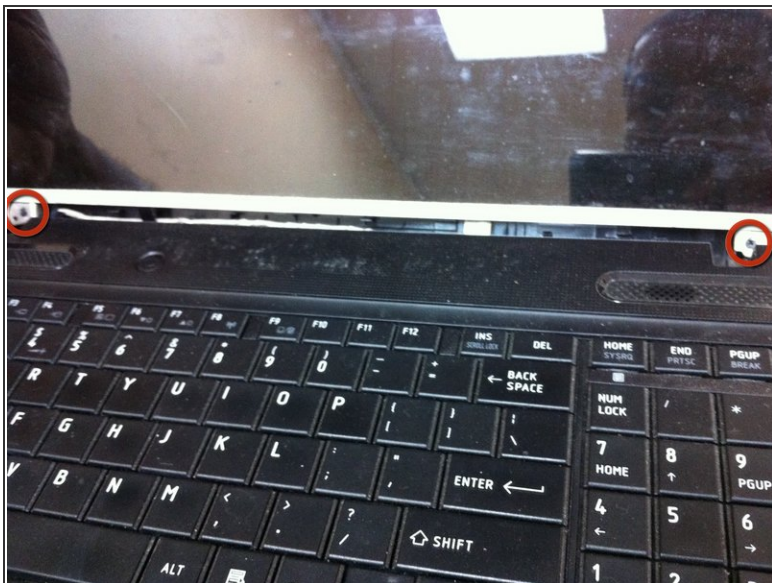
- Turn laptop around to back, and undo the 2 latches in back in order to remove bottom 2 screws of LCD screen. Use your utility knife to slide into crack and push down to unlatch.

Step 3



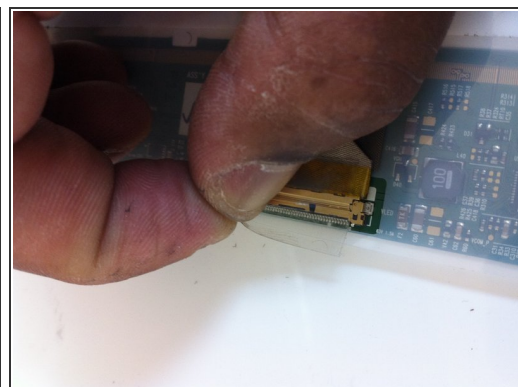
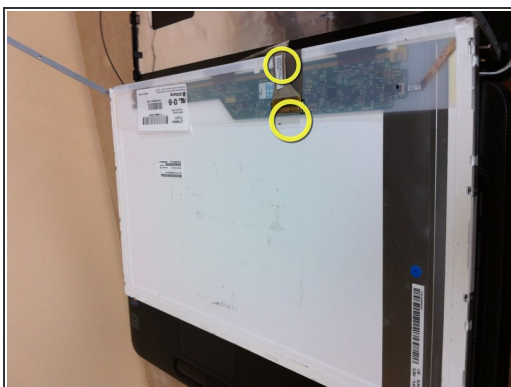
- Once screws are removed, remove cover bezel from LCD very gently without breaking it, you should hear clicking noise when removing.

Step 4



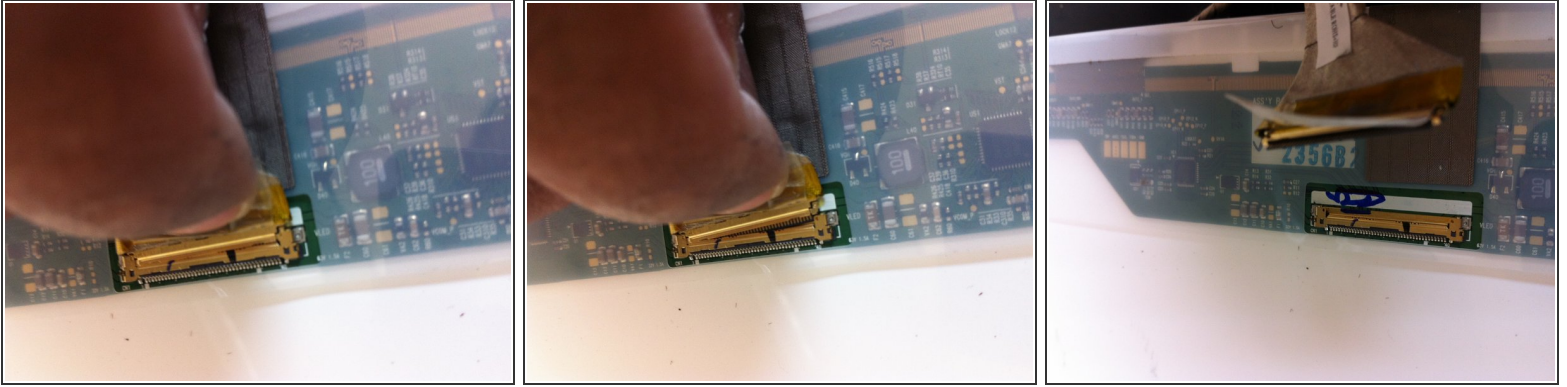
- Remove 2 screws at bottom of LCD frame and also the 2 screws at top of LCD frame (not pictured). This will allow you to lay the back cover away from frame to access side easier and remove the 3 screws on each side to detach LCD screen. *Do not pull LCD once unscrewed, lay down face down on keyboard for last step.*

Step 5



- Before trying to remove video cable from back of LCD. First gently remove cable from adhesive holding it down to board. Then remove tape from top of cable holding connector in place. Be very gentle at these points.

Step 6



- Now gently pull tab to pull cable from slot, be careful not to pull too hard and damage pins when removing. Once removed remove board and install new one.

To reassemble your device, follow these instructions in reverse order.