



# Toshiba Satellite C655D-S5084 Hard Drive Replacement

Installing Hard Drive in Toshiba Satellite C655D-S5084.

Written By: Shelby Kunz



## INTRODUCTION

If your computer is running slow and needs a little pick me up, one option is to replace or upgrade your hard drive. This guide will show you how to remove your hard drive and install a replacement in your Toshiba Satellite C655D-S5084.

---

### TOOLS:

- [Phillips #1 Screwdriver](#) (1)
-

## Step 1 — Hard Drive



- Unscrew the 5.5 mm "F5" screw using the Phillips #0 screwdriver, and carefully remove the plastic cover.
- ⓘ The screw may be captive to the cover, so you may just have to loosen it, and not completely remove it.

## Step 2



- Remove the 2.5 mm screw labeled "F3" inside the hard drive casing (on the small metal tab of the hard drive) using the Phillips #1 screwdriver.

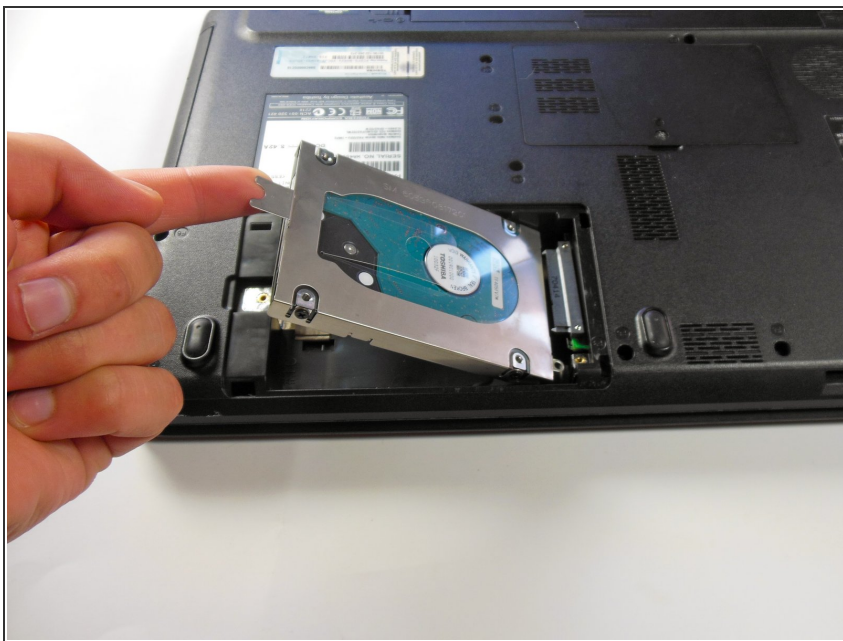


### Step 3



- Place your thumb on the large metal tab on the hard drive and slide toward yourself, away from its base attachment.

### Step 4



- Use your finger to lift the large metal tab on the hard drive to remove completely.
- ⚠ Do not lift until the hard drive is completely free from its base attachment, otherwise you may damage the base.

To reassemble your device, follow these instructions in reverse order.