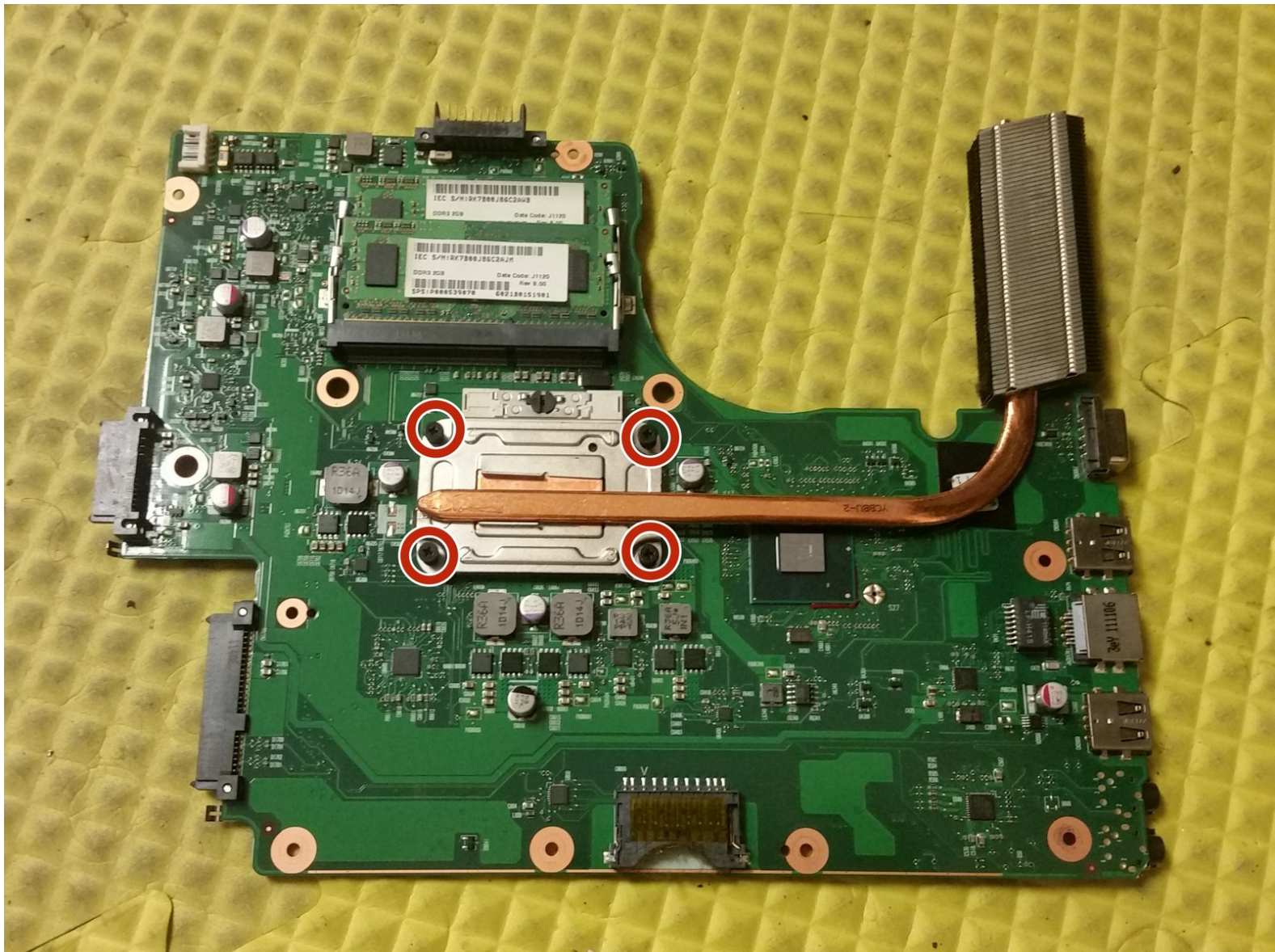




Toshiba Satellite C655D-S5200 Motherboard Replacement

This guide teaches you how to replace the motherboard in a Toshiba Satellite C655 series laptop.

Written By: Joseph Sctbunio



INTRODUCTION

This guide teaches you how to replace the motherboard in a Toshiba Satellite C655 series laptop.



TOOLS:

- [Essential Electronics Toolkit](#) (1)
-

Step 1 — Remove battery



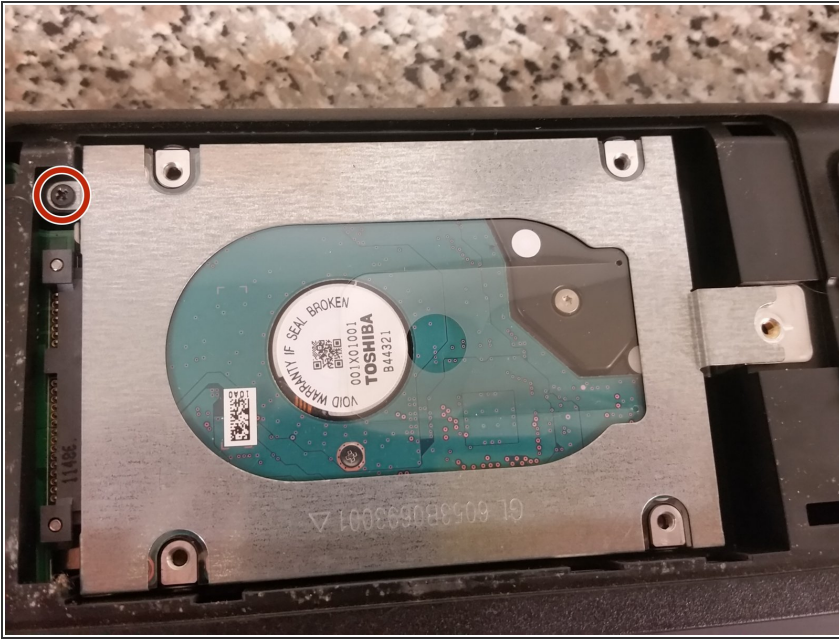
- With the battery side facing you, first move the right locking latch to the right.
- Afterwards, move the left spring latch to the left, but keep your finger there, and pull the battery out with your other hand.

Step 2 — Remove hard drive cover



- Remove the single screw securing the hard drive cover to the base.

Step 3 — Remove hard drive caddy



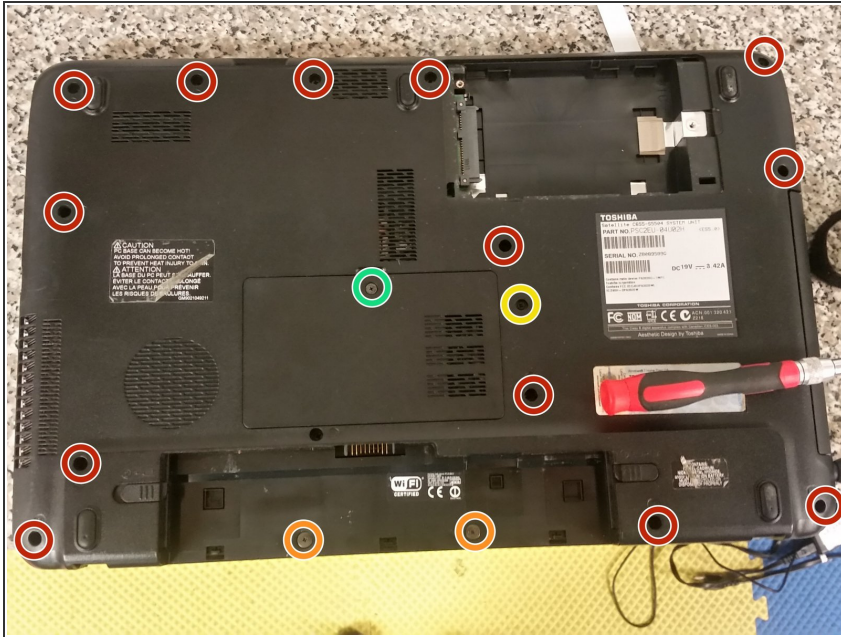
- Remove the single screw securing the hard drive caddy to the base.

Step 4 — Remove hard drive from caddy



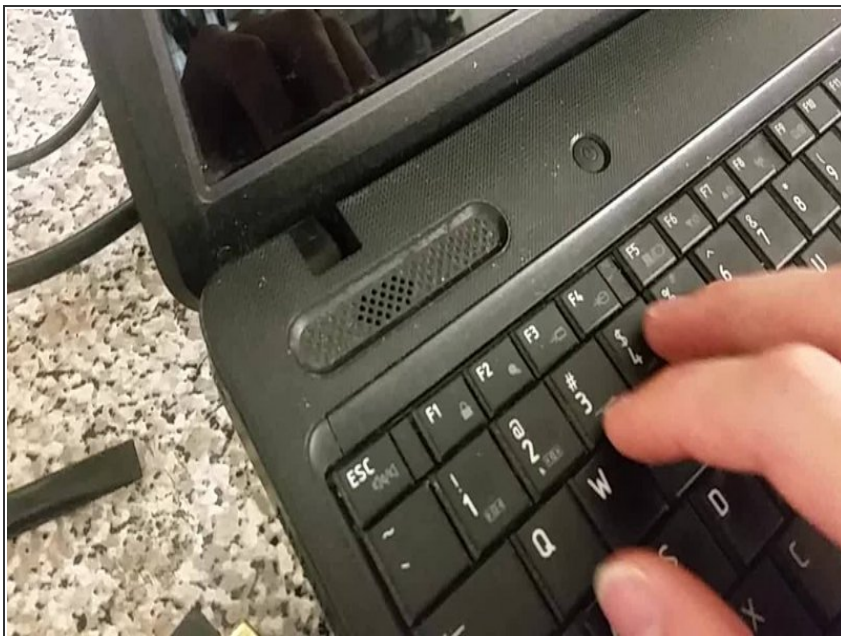
- ① This step is unnecessary if you're just removing the hard drive for testing purposes, or to replace the motherboard.
- Remove the four screws securing the hard drive to the caddy.
- You're done!

Step 5 — Remove some screws



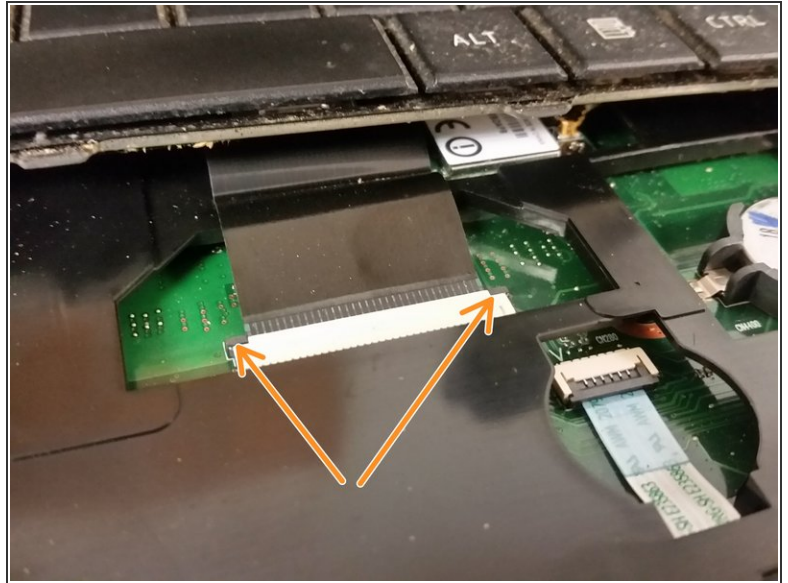
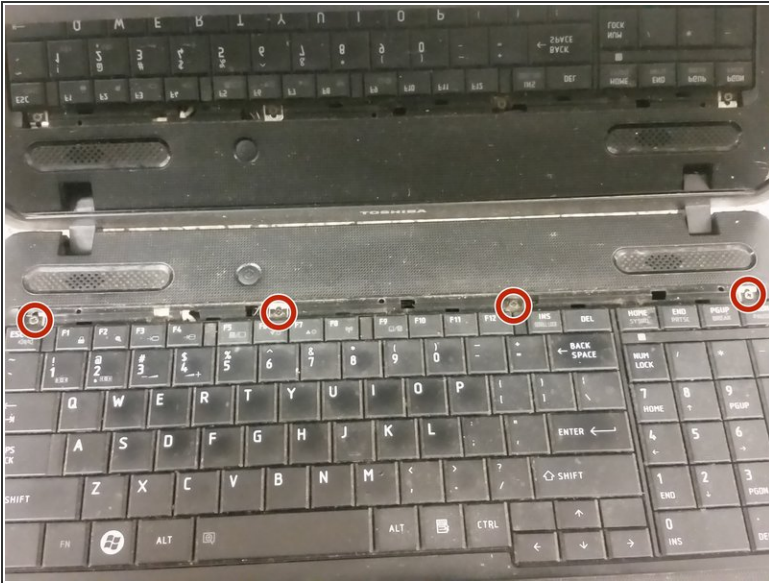
- Remove the twelve "F6"/M2.5x6 screws.
- Remove the two "F2" screws under where the battery was.
- Remove the "F3" screw securing the optical drive, and slide the optical drive out.
- Remove the two "F2" screws from where the optical drive faceplate was.
- Remove the memory cover screw, pull the memory door open, and remove the two "F6"/M2.5x6 screws from underneath.

Step 6 — Remove keyboard trim



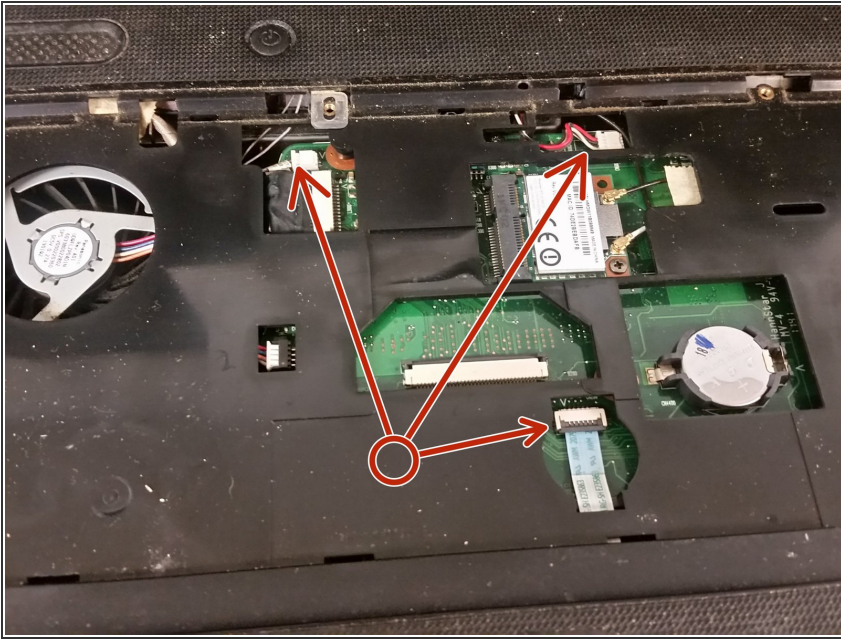
- Use your fingernail or a spudger to get under the keyboard trim, and pry it up. Go along the keyboard trim, pulling it up.

Step 7 — Remove keyboard



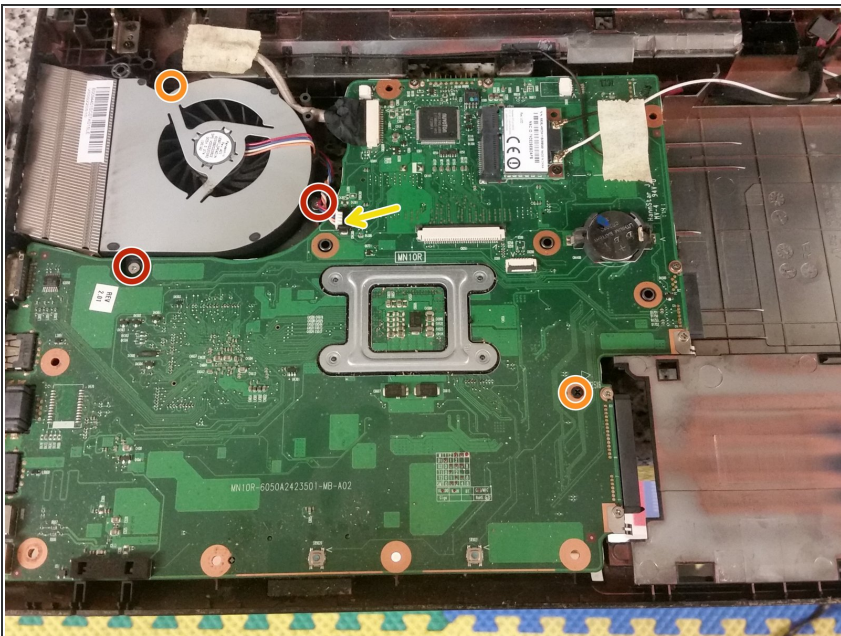
- Remove the four screws securing the keyboard to the palmrest.
- Lift the keyboard at the top a little, and pull the keyboard towards the screen, so that you see the locking connector below the keyboard.
- Push the locking connector's lock towards the screen at both the left and the right points, very gently.
- Pull the now-loose keyboard cable out of the connector.

Step 8 — Remove palmrest cables & palmrest



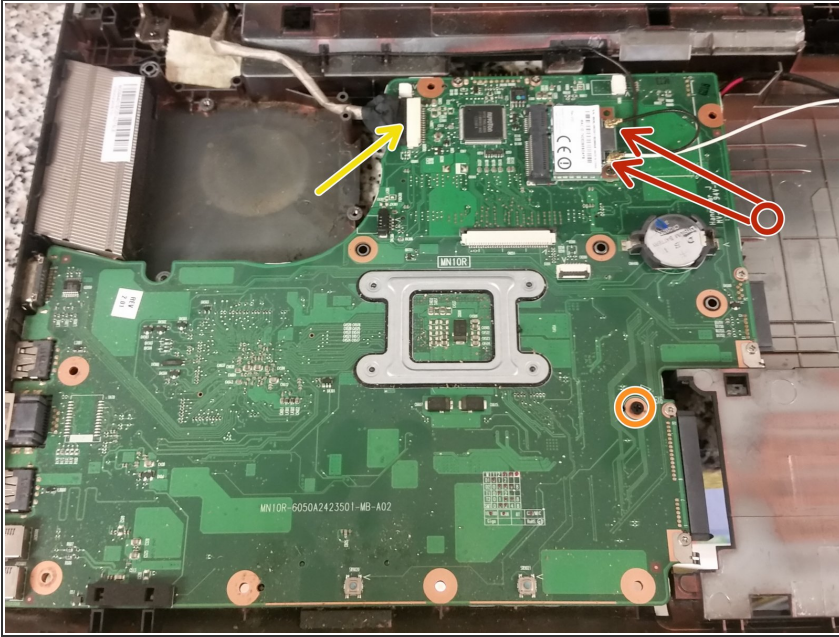
- Remove the three palmrest cables from the motherboard, that being the power button cable, the speaker cable, and the touchpad cable.
- ⓘ No need to remove any of the other cables yet.
- Use a spudger to separate the palmrest from the base.

Step 9 — Remove fan



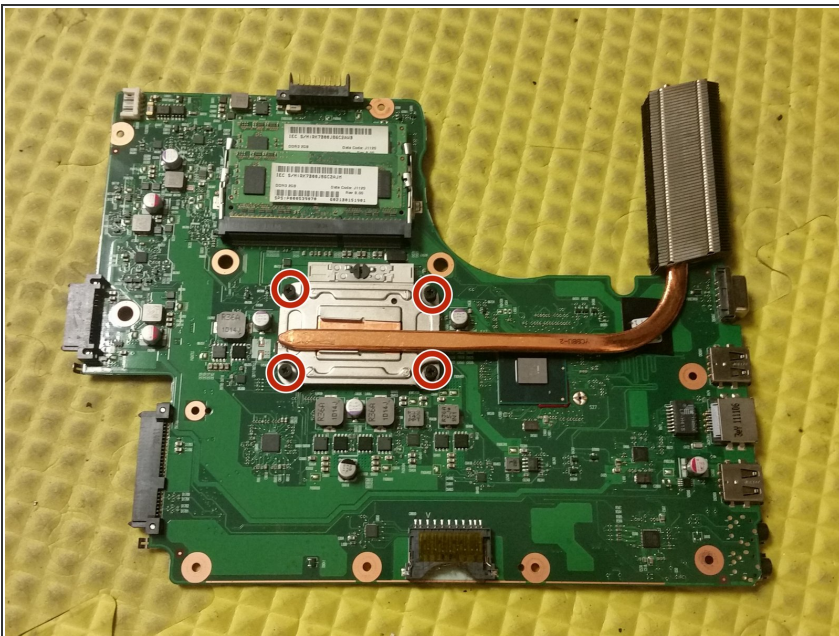
- Remove the fan cable.
- Remove the two silver-colored fan screws.
- Remove the single black-colored fan screw.

Step 10 — Remove motherboard



- Remove the single screw securing the motherboard to the base.
- Remove the two wireless antenna connectors.
- Remove the LCD cable.
- Lift the motherboard out of the base.

Step 11 — Remove the heatsink



- Remove the four screws securing the heatsink to the motherboard.
- Remove the processor, memory, and optionally, the clock battery. Install the first two in the replacement motherboard. You're done!

To reassemble your device, follow these instructions in reverse order.