



Toshiba Satellite C675-S7106 Keyboard Replacement

This guide allows a user to replace their keyboard module, if necessary.

Written By: Dinis Valcorba



INTRODUCTION

If your keyboard module is malfunctioning, you'll need to replace it. You'll need a PH0 screwdriver and a rigid pry tool. The process itself is easy, just pay special attention when gently opening the ZIF connector.



TOOLS:

- [Spudger](#) (1)
 - [Phillips #0 Screwdriver](#) (1)
-

Step 1 — Battery



- Flip the laptop over, so that the "top" of the laptop is against your working surface.
- Orient the laptop so that the silver label is in the bottom-left corner, with the battery facing you.

Step 2



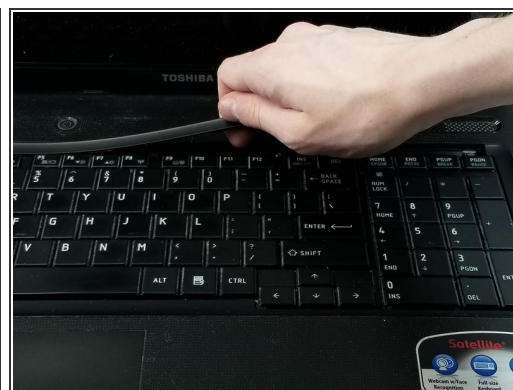
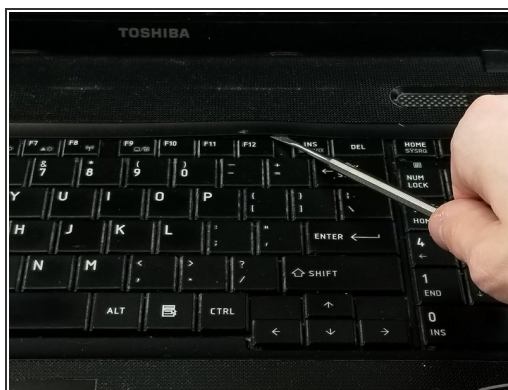
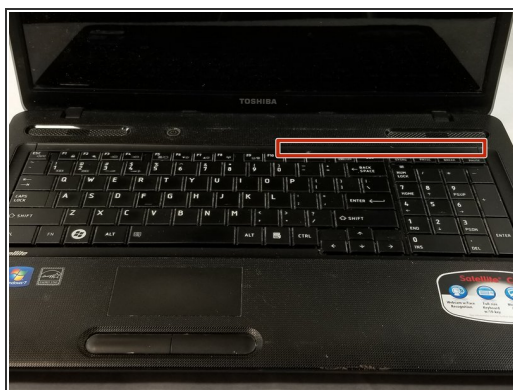
- On the right side of the battery, move the tab marked 1 to the right, unlocking the battery.
- On the left side of the battery, hold the tab marked 2 to the left while pulling the battery towards you.

Step 3 — Keyboard



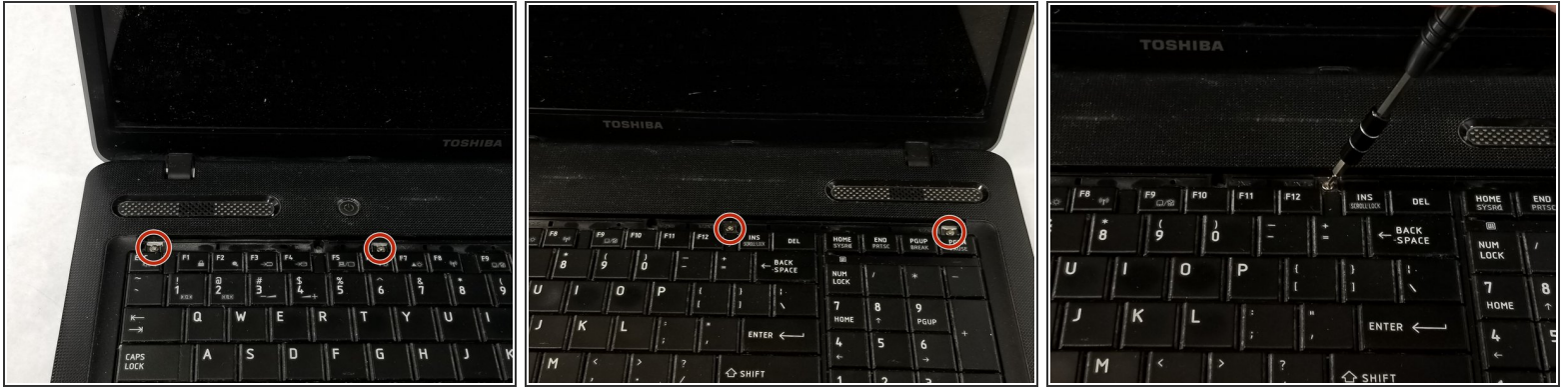
- Open the laptop with the screen facing you, as if to use it.

Step 4



- Starting at the right, pry up part of the plastic bar by using a spudger between the F12 and Insert key.
- Pull up on the rest of the plastic bar to remove it.

Step 5



- Remove the four 2.5mm M2 screws above the keyboard using a PH0 screwdriver.

Step 6



- Once screws are removed, lift the keyboard closest to the screen and gently flip it over.
- Using the spudger, lift up the white ZIF connector to unlatch the ribbon cable, and gently remove the cable.

To reassemble your device, follow these instructions in reverse order.