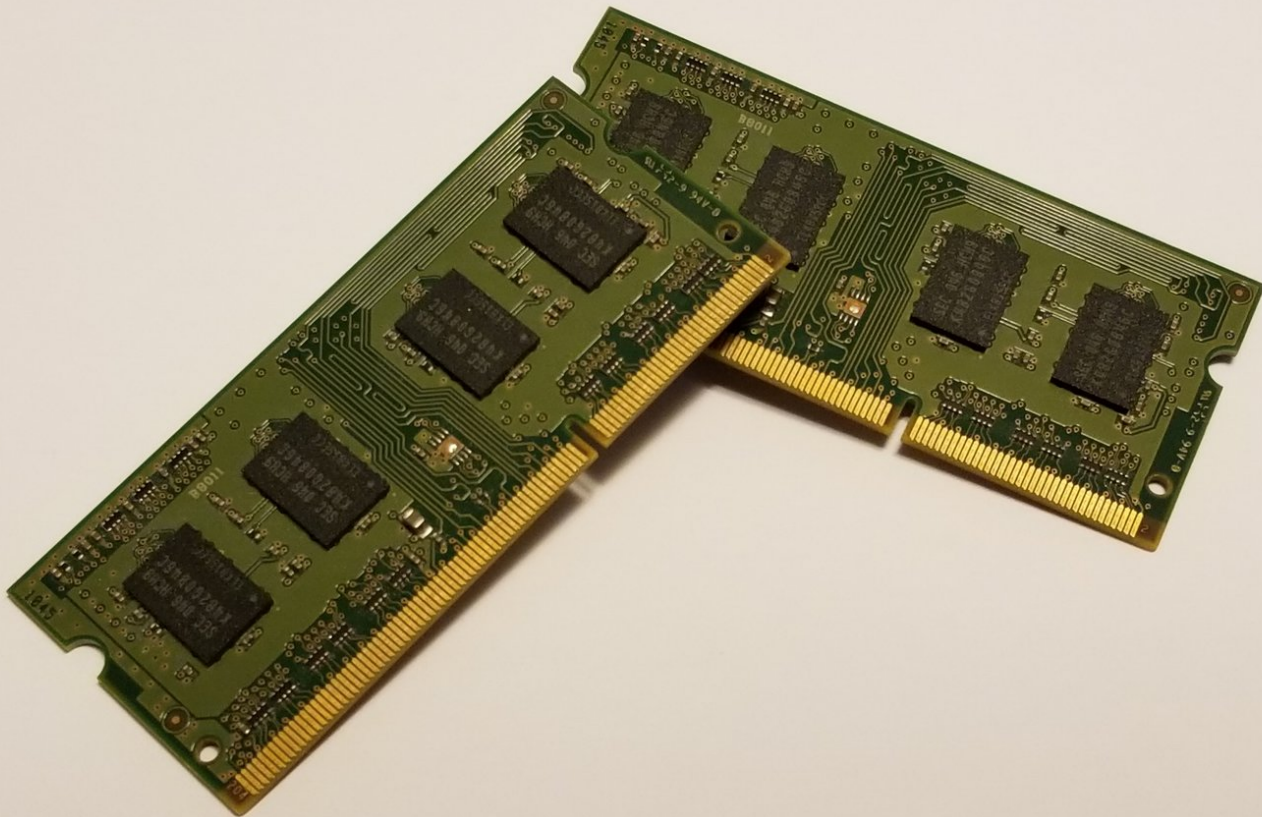




Toshiba Satellite C675-S7106 RAM Replacement

This guide allows the user to re-seat and reconnect the RAM sticks inside the device.

Written By: Joshua Steakelum



INTRODUCTION

Replacing and re-seating RAM is a common fix and upgrade done to laptops. This laptop model makes it easy - all you'll need is a PH0-head screwdriver and a pry tool.



TOOLS:

- [Phillips #0 Screwdriver](#) (1)
 - [Spudger](#) (1)
-

Step 1 — Battery



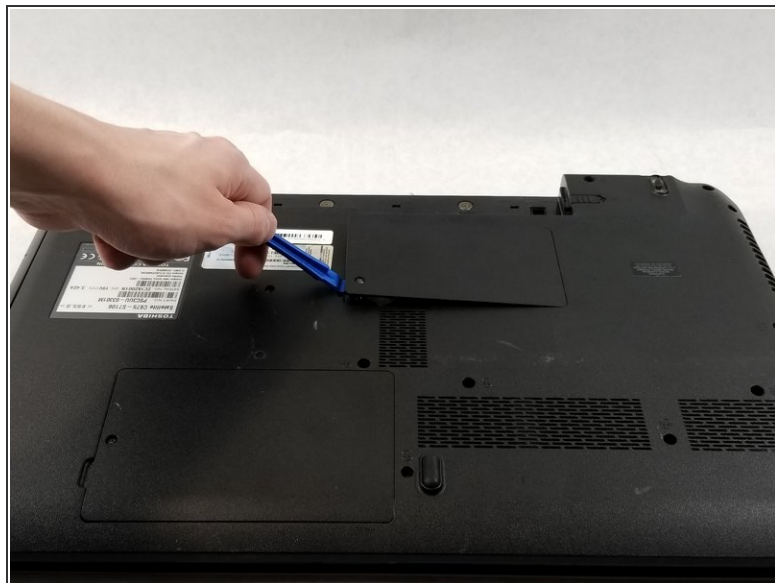
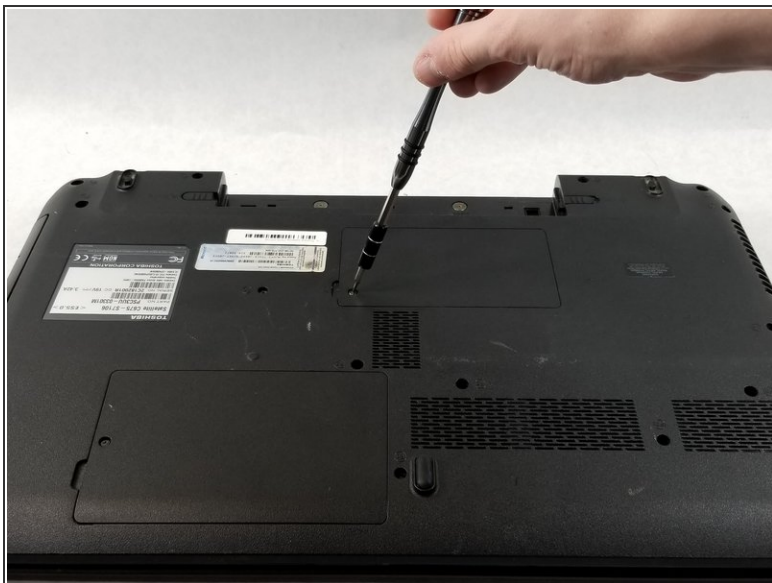
- Flip the laptop over, so that the "top" of the laptop is against your working surface.
- Orient the laptop so that the silver label is in the bottom-left corner, with the battery facing you.

Step 2



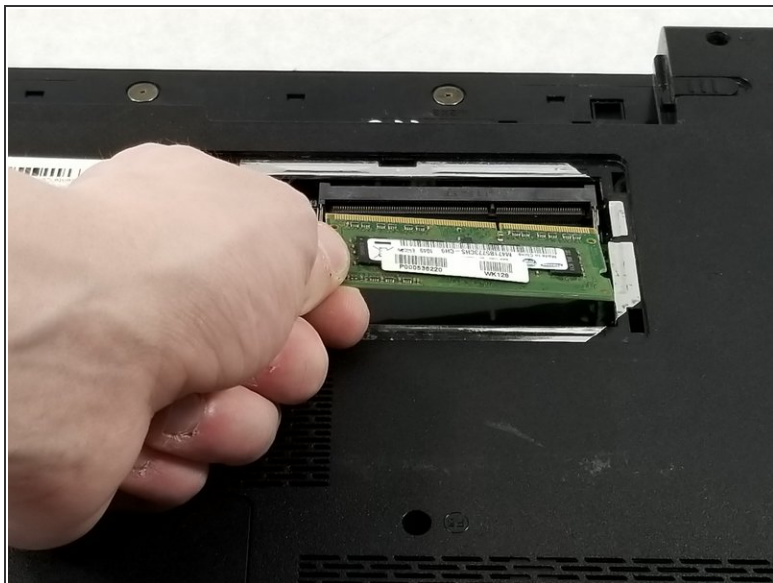
- On the right side of the battery, move the tab marked 1 to the right, unlocking the battery.
- On the left side of the battery, hold the tab marked 2 to the left while pulling the battery towards you.

Step 3 — RAM



- Rotate the laptop so that the battery cavity faces away from you.
- Unscrew the single PH0 head screw connecting the center panel to the laptop.
- ⓘ This screw does not need to be completely removed, as it's permanently attached to the device.
- Using a plastic spudger, unclip and remove the panel from the device.

Step 4



- Unclip and move the two metal clips on either side of one or either RAM stick.
- Pull the stick outwards as you lift it upwards.
- ☑ When reinstalling, ensure that the contacts are completely covered and connected.

To reassemble your device, follow these instructions in reverse order.