



Toshiba Satellite C75D-A7370 Hard-Drive Replacement

This guide will give you detailed steps on how to locate and replace the hard-drive on the Toshiba Satellite C75D-A7370.

Written By: Basim Ismail






TOOLS:

- [Phillips #1 Screwdriver](#) (1)
 - [Spudger](#) (1)
-

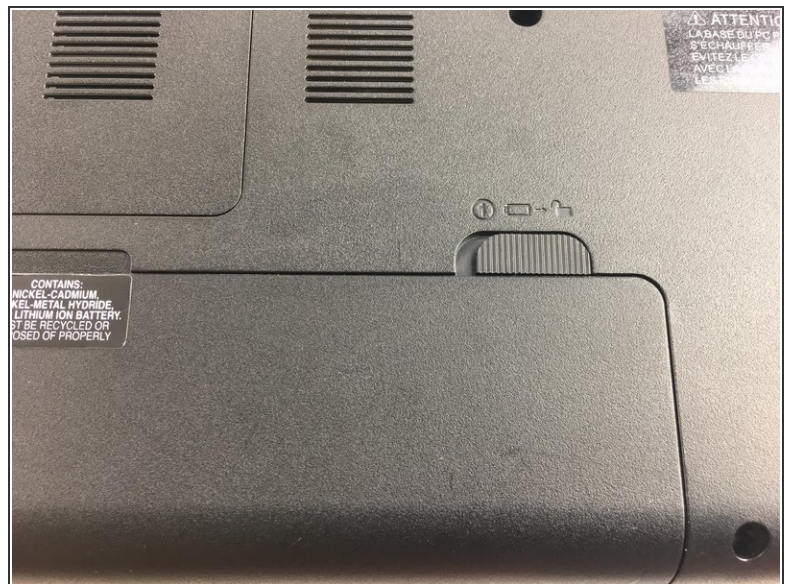
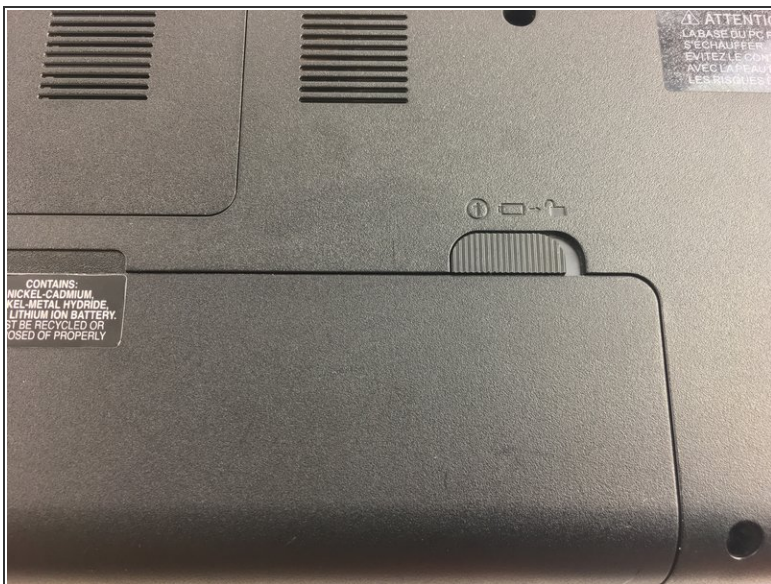
Step 1 — Battery



- To begin replacing your battery, flip the laptop over so that the back is visible. Locate the battery at the bottom center of the laptop.

 Before beginning battery removal, make sure that no power source is connected to the laptop. This will avoid electrical shock.

Step 2



- On the right side of the battery there will be a locking switch. Slide the switch into the unlocked position.

Step 3



- Using your left hand, move the switch on the left side of the battery towards the center of the laptop while simultaneously prying up on the center of the battery with a spudger. The battery will flip out and can be removed.

Step 4 — Back Access Panel



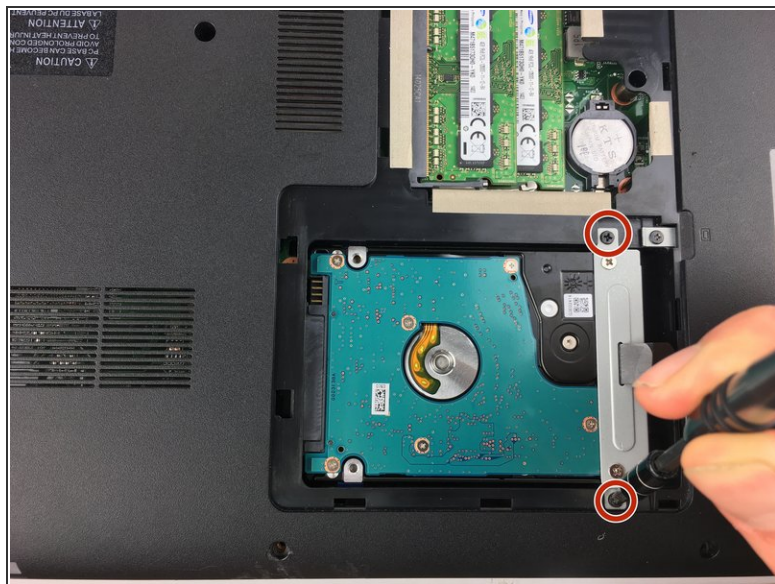
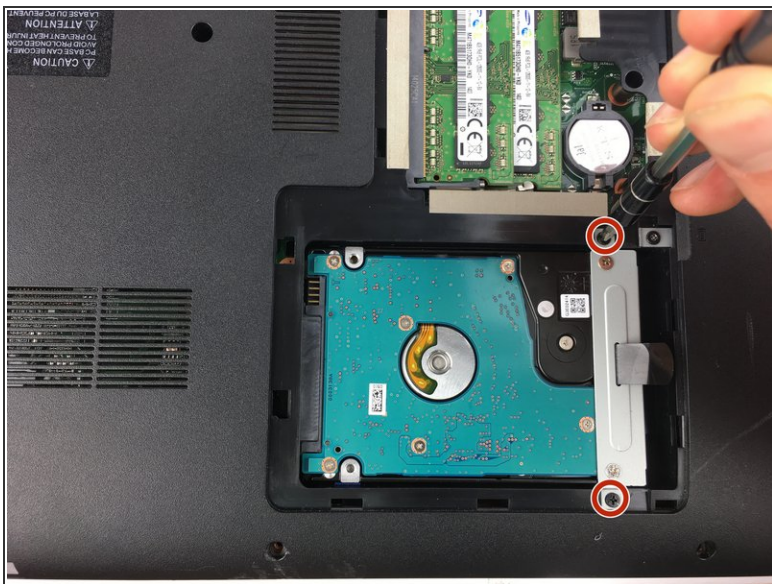
- Remove the 7mm screw near the center of the back of the laptop with a P1 screwdriver and pry off the access panel with a nylon spudger.

Step 5 — Hard-Drive



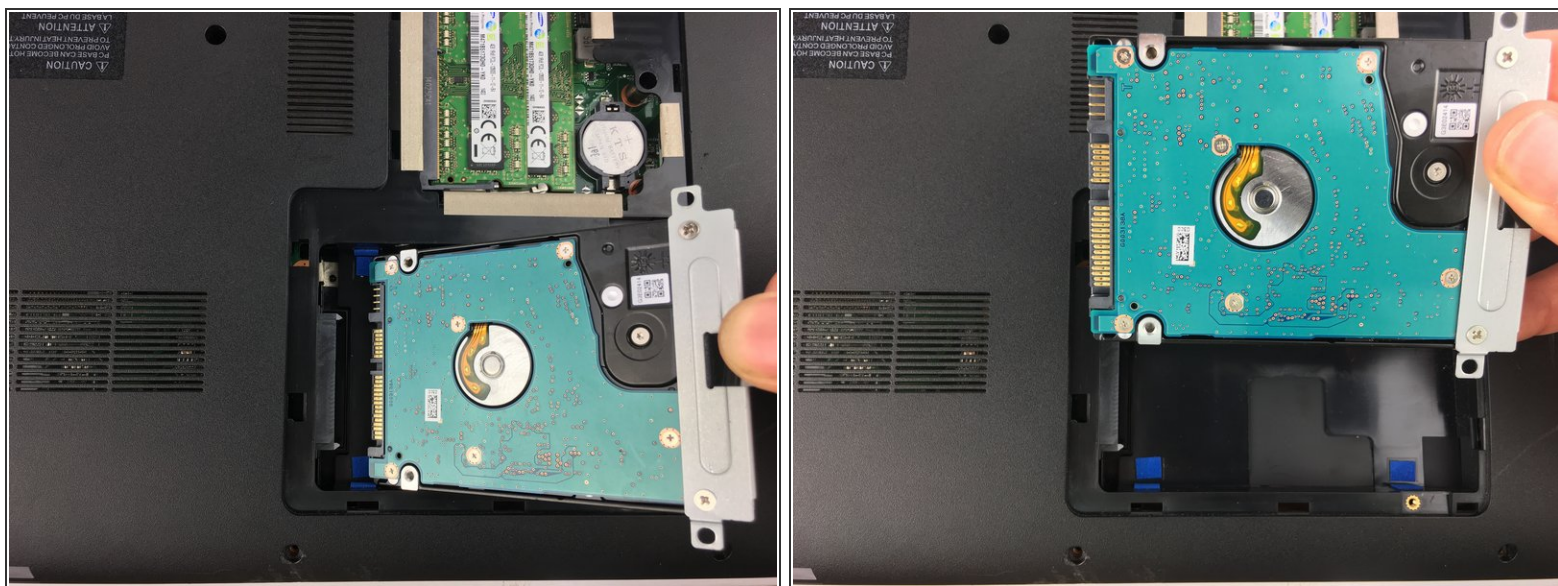
- Locate the hard-drive.

Step 6



- Remove the two 7 mm screws holding the hard-drive in place with a P1 driver

Step 7



- Then using the tab located on top of the hard-drive pull up towards you and then pull to the left to disconnect the hard-drive. Now you are ready to replace your hard-drive.

To reassemble your device, follow these instructions in reverse order.