



Toshiba Satellite C75D-A7370 Optical Disk Drive Replacement

This guide will show how to replace the Optical Disk Drive in a Toshiba Satellite C75D-A7370

Written By: Chris Purdie



INTRODUCTION

Please remember to disconnect all power sources before beginning disassembly, including AC power cord and battery.


TOOLS:

- [Phillips #1 Screwdriver](#) (1)
 - [Spudger](#) (1)
-

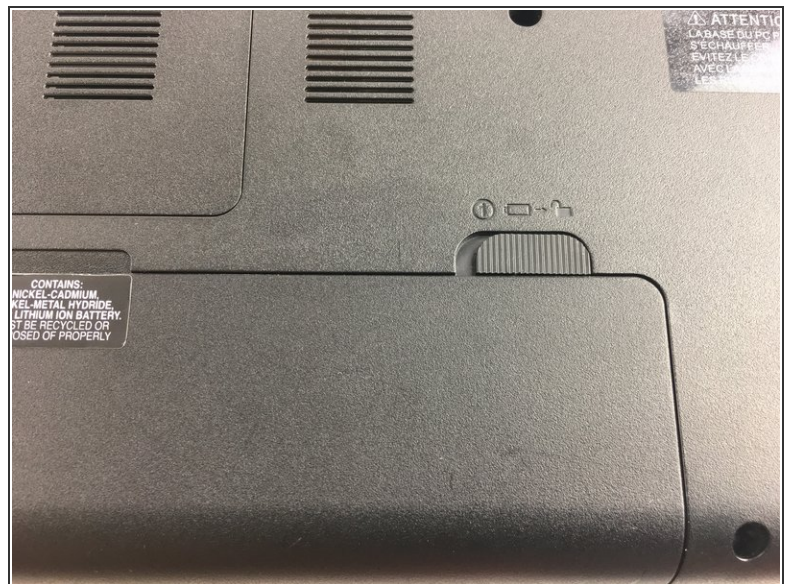
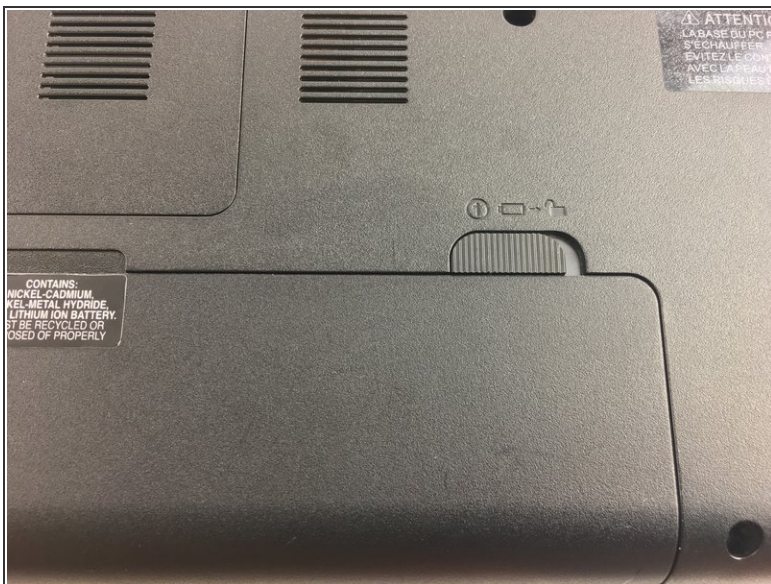
Step 1 — Battery



- To begin replacing your battery, flip the laptop over so that the back is visible. Locate the battery at the bottom center of the laptop.

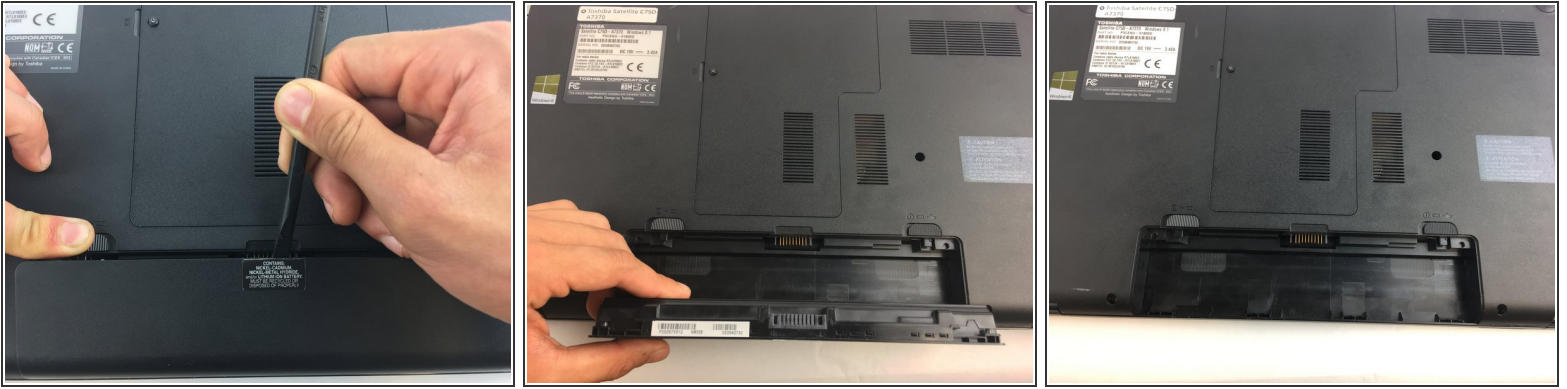
 Before beginning battery removal, make sure that no power source is connected to the laptop. This will avoid electrical shock.

Step 2



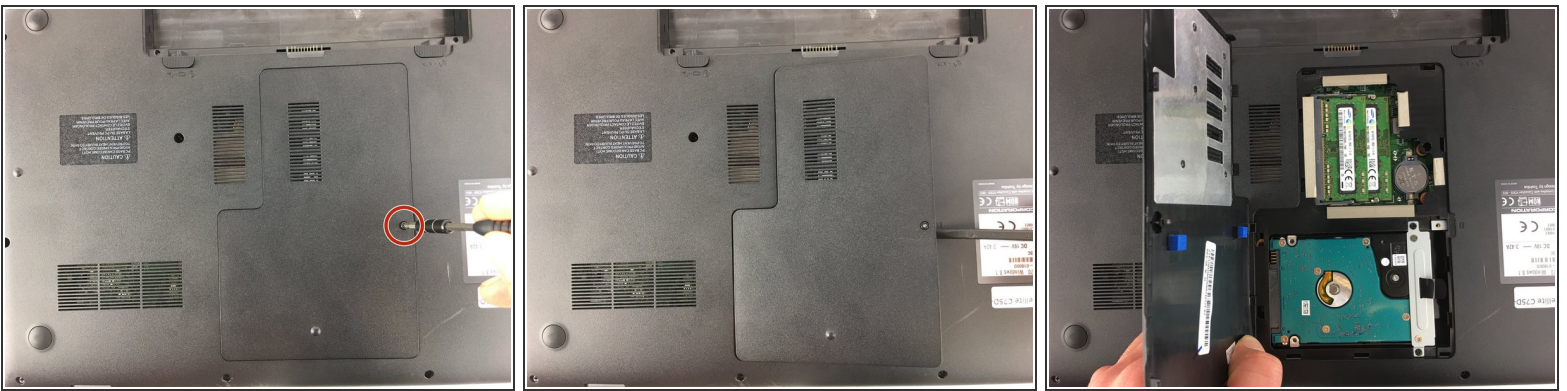
- On the right side of the battery there will be a locking switch. Slide the switch into the unlocked position.

Step 3



- Using your left hand, move the switch on the left side of the battery towards the center of the laptop while simultaneously prying up on the center of the battery with a spudger. The battery will flip out and can be removed.

Step 4 — Back Access Panel



- Remove the 7mm screw near the center of the back of the laptop with a P1 screwdriver and pry off the access panel with a nylon spudger.

Step 5 — Optical Disk Drive



- Remove the 3mm screw located under the back access panel nearest the optical drive with a P1 driver.

Step 6



- Gently grab and pull the optical drive out of the laptop from the outside.

To reassemble your device, follow these instructions in reverse order.