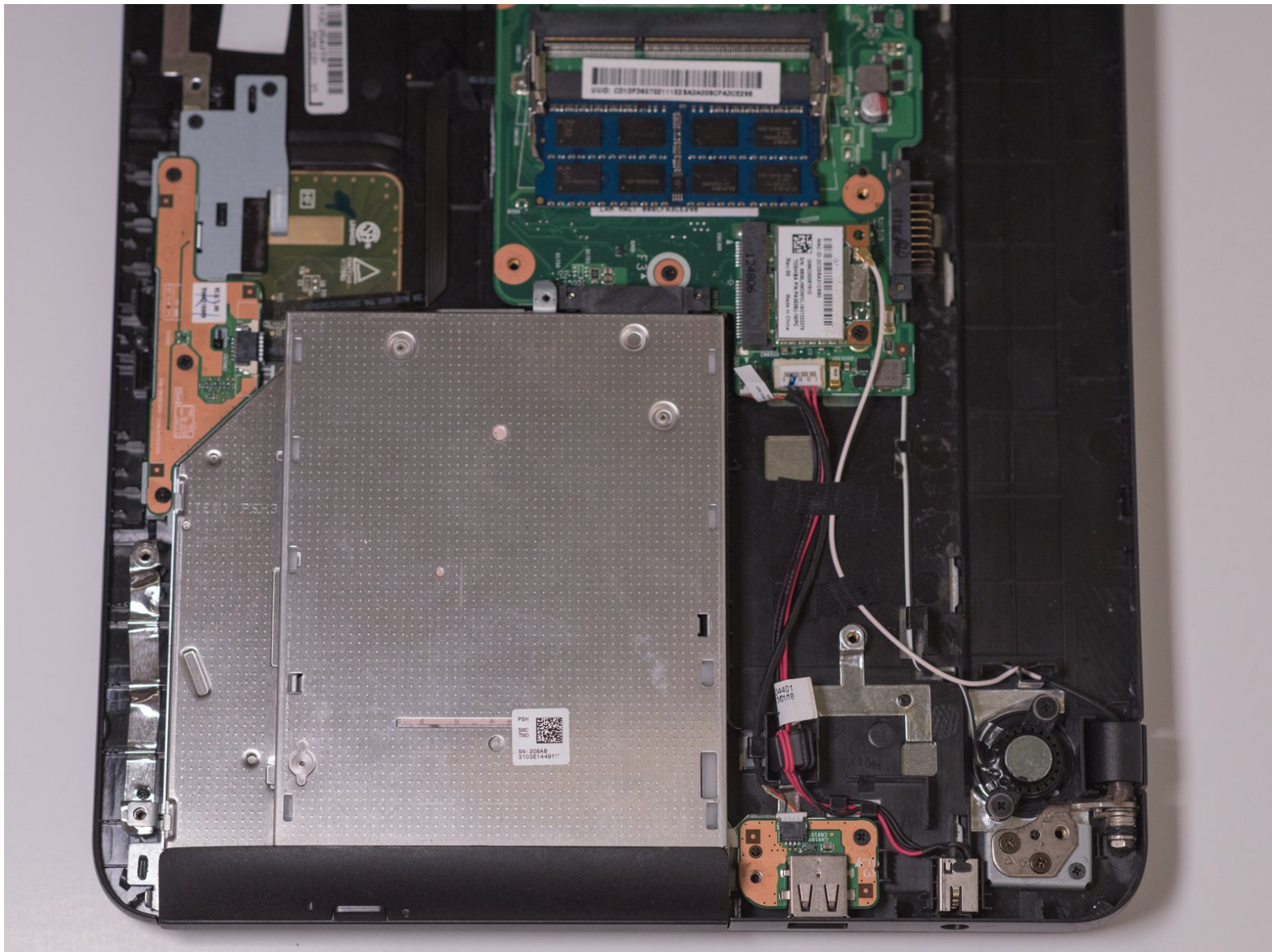




Toshiba Satellite C855-S5115 DVD Tray Replacement

Your DVD tray might need replacing if it no longer slides out when you push the button, or if it is no longer reading DVDs.

Written By: Claire Fletcher



INTRODUCTION

This guide will show you how to replace your Toshiba's DVD tray when it is no longer working correctly.



TOOLS:

- [JIS #1](#) (1)
 - [Spudger](#) (1)
-

Step 1 — Hard Drive



- Remove the 7mm Phillips screw located on the back panel of the device using the J1S Phillips head screwdriver.

Step 2



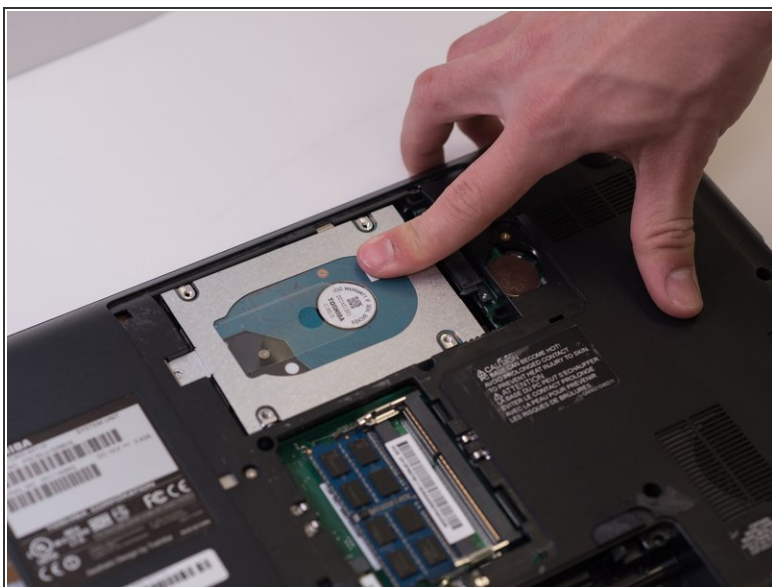
- Pry the back panel out of the laptop using the spudger tool

Step 3



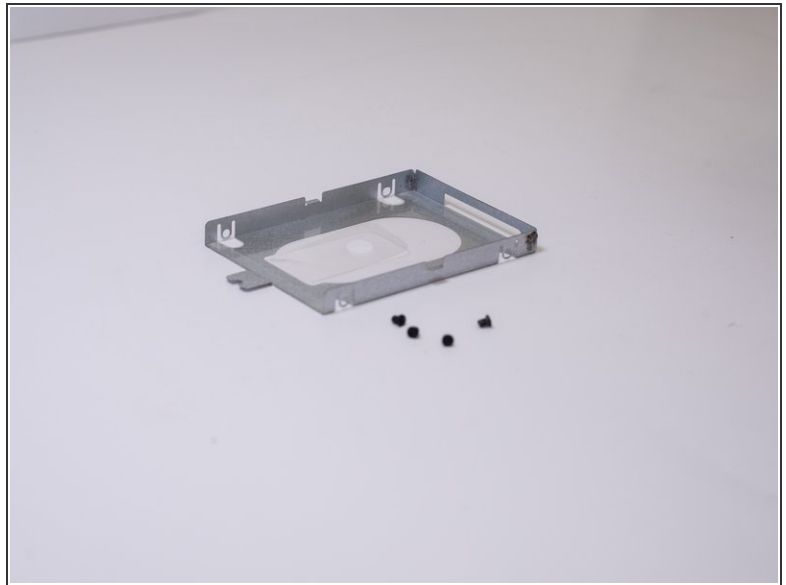
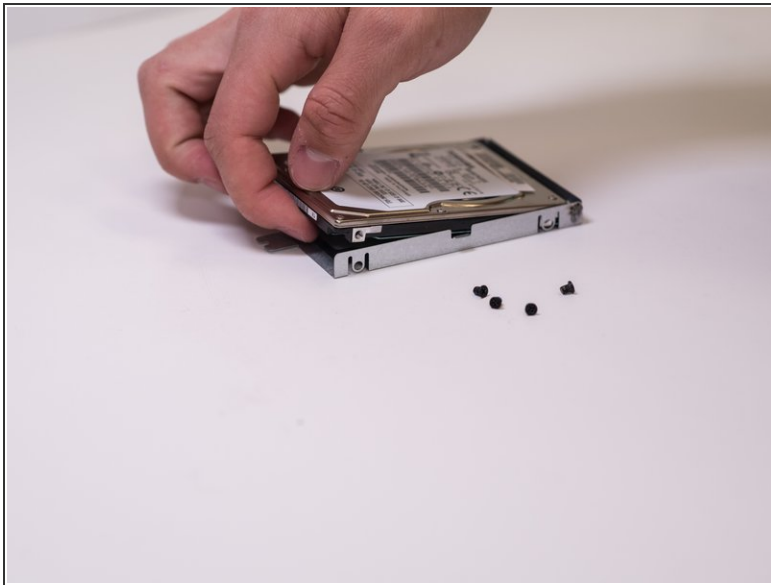
- Locate and unscrew the five 3.5mm screws holding the hard drive in place using the J1S Phillips head screwdriver

Step 4



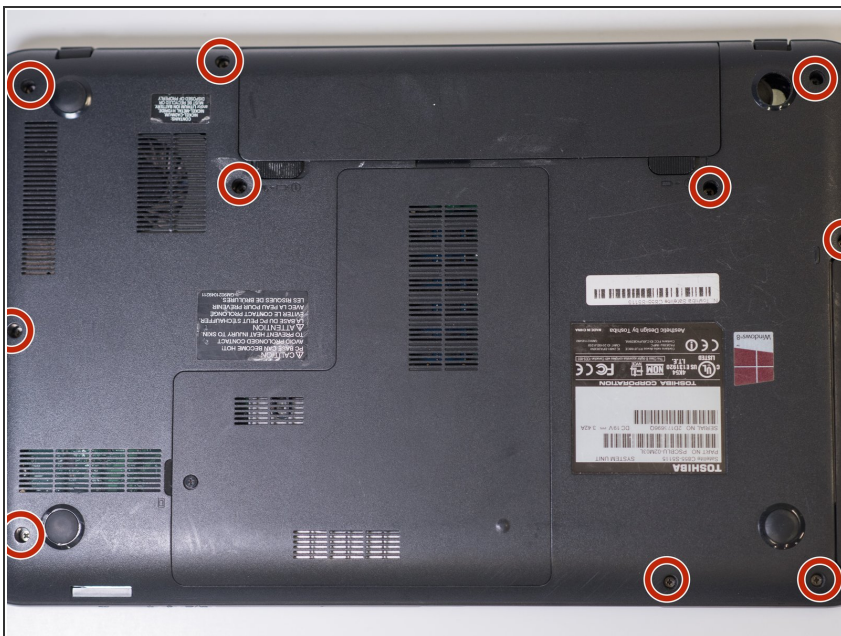
- Slide the HDD towards the sticker on the left.

Step 5



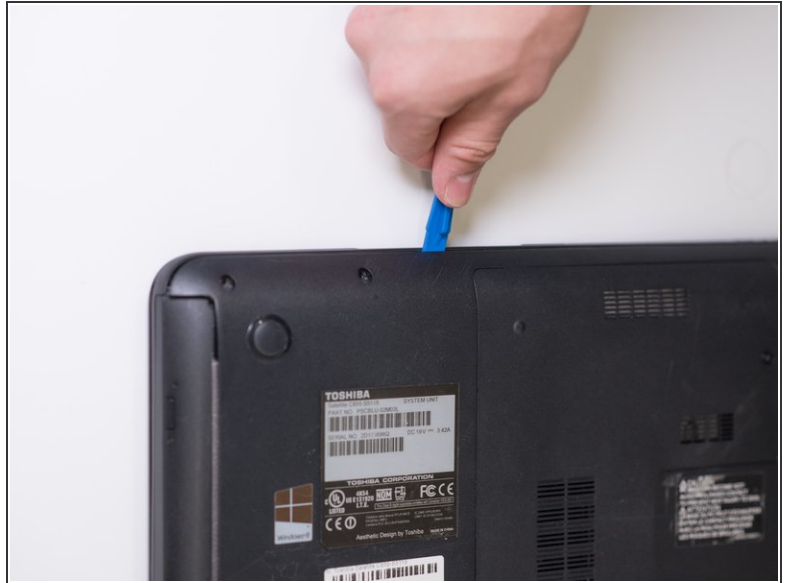
- Remove the four 2mm Phillips screws from the HDD tray securing the disk using the J1S Phillips head screwdriver.
- Remove the hard drive from the tray.

Step 6 — DVD Tray



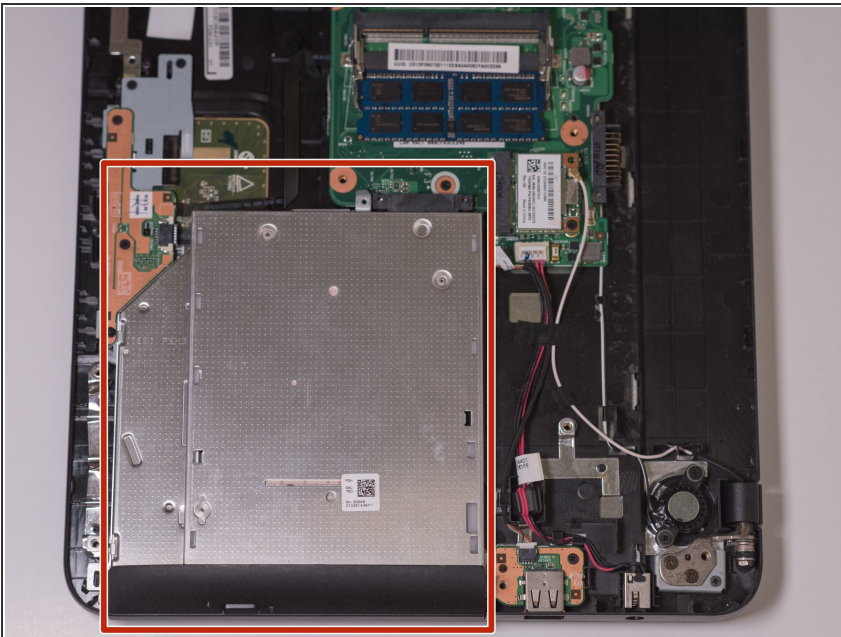
- Remove the ten 7mm screws located on the bottom of the laptop using the J1S screwdriver.

Step 7



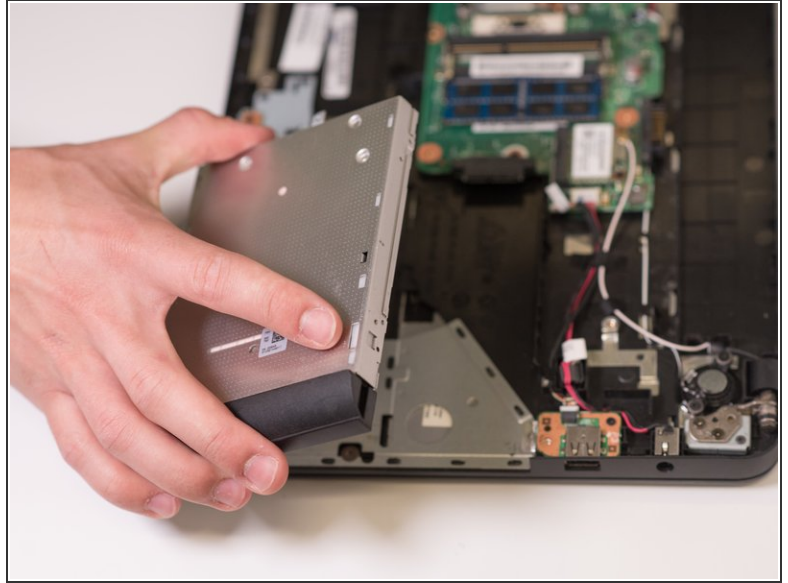
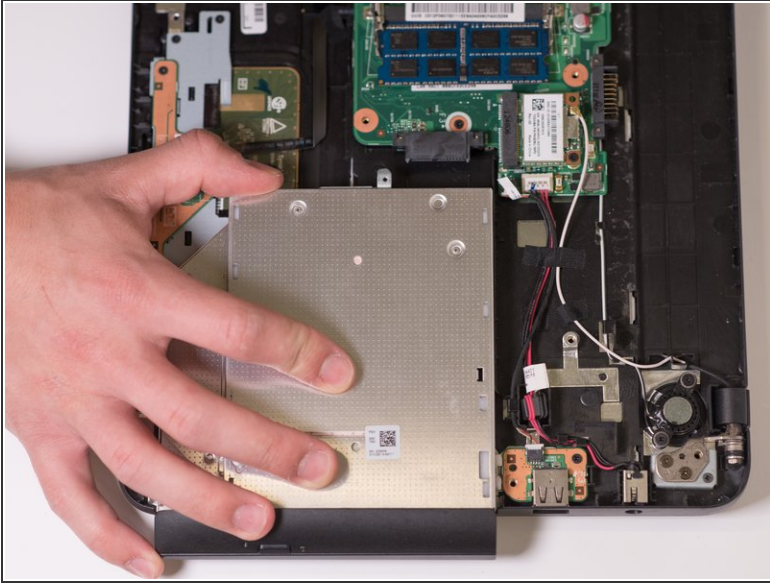
- Insert a plastic opening tool and follow the edges to open the panel.

Step 8



- Once open, locate the CD tray indicated in this picture.

Step 9



- Lift the tray up and out.

To reassemble your device, follow these instructions in reverse order.