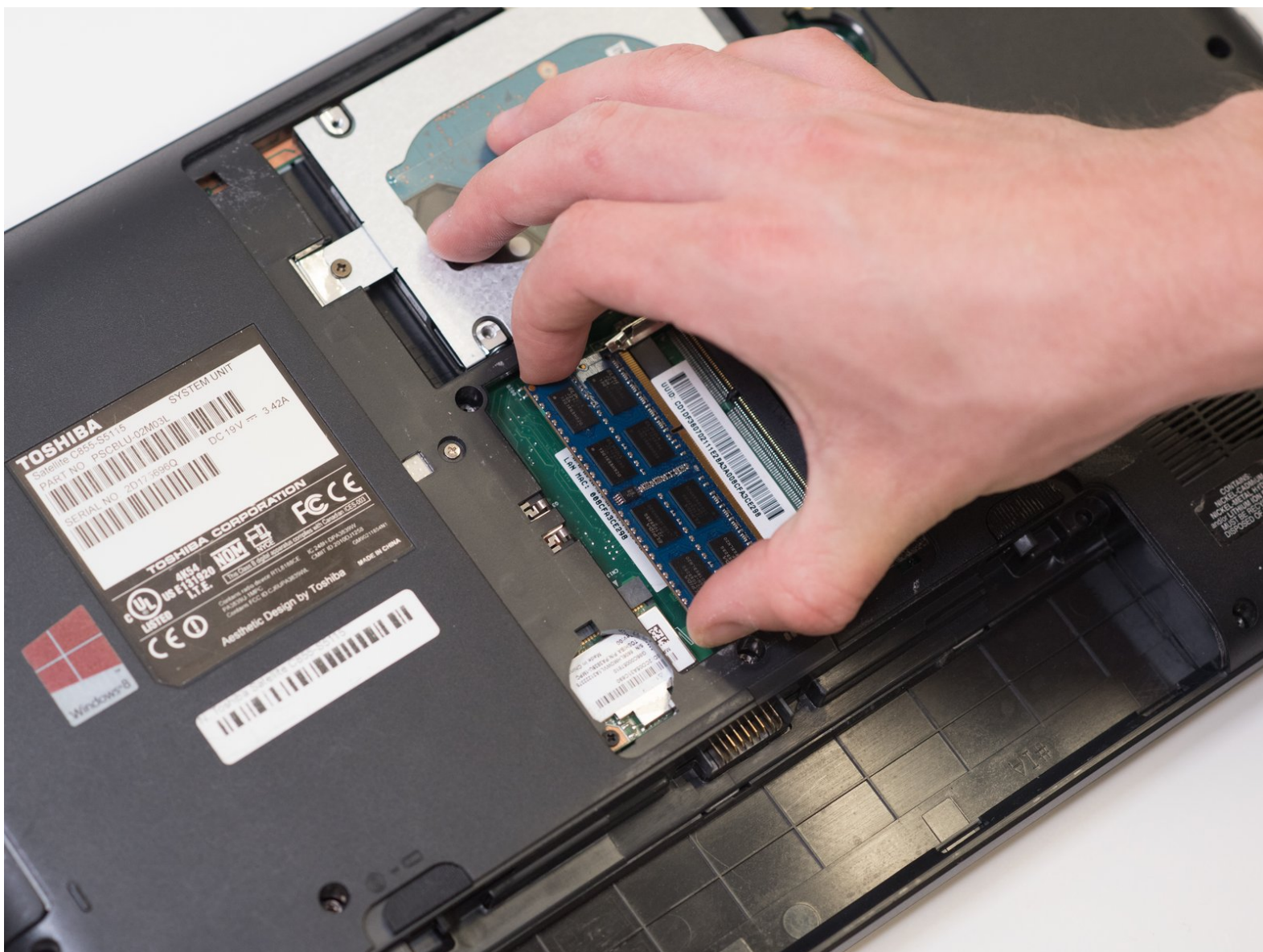




Toshiba Satellite C855-S5115 RAM Replacement

You might need to replace your RAM if your laptop has no more memory space or runs slowly when many windows or tabs are open at once.

Written By: Claire Fletcher



This document was generated on 2019-09-29 08:06:05 PM (MST).

INTRODUCTION

If your device has slowed down or no longer has saving capacity, it's time for an upgrade. This guide will show you how to replace your RAM (Random Access Memory) when you need to expand your device's memory space.



TOOLS:

- [iFixit Opening Tools](#) (1)
- [J1 Screwdriver Bit](#) (1)
- [Spudger](#) (1)



PARTS:

- [Crucial 2GB 200-Pin DDR2 SO-DIMM DDR2 800 \(PC2 6400\) Laptop Memory Model CT25664AC800](#) (1)

Step 1 — Battery



- Use two fingers to pull the ridged lock tabs on the bottom of the computer toward the edges. This will unlock the battery.

Step 2



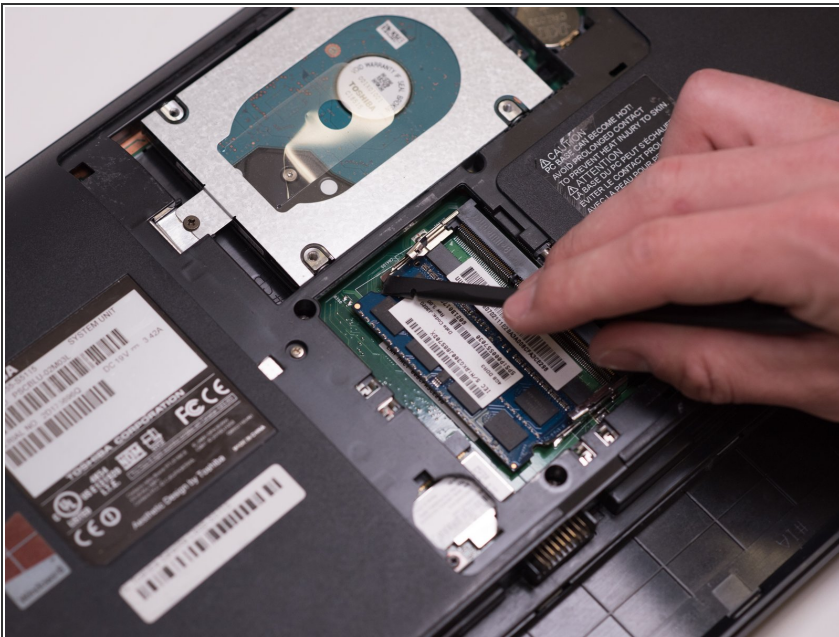
- Holding the left tab in place, use the groove located between the two tabs to pry the battery up and out.

Step 3 — RAM



- Remove the single 7mm Phillips screw holding the panel in place using the J1S screwdriver.
- Remove the back panel using the opening tool.

Step 4



- Gently push the metal hinges outwards from the RAM.

Step 5



- Pull the RAM out from the motherboard.

To reassemble your device, follow these instructions in reverse order.