



Toshiba Satellite C855D-S5303 Disc Drive Replacement

If your laptop is not releasing and/or playing discs, your disc drive may be faulty. This step by step guide will show you how to access and replace it.

Written By: Courtney Burns



INTRODUCTION

This guide will show you how to replace your disc drive. This repair requires only a small Phillips Head Screwdriver and your hands.



TOOLS:

- [Small Phillips Head Screwdriver](#) (1)
-

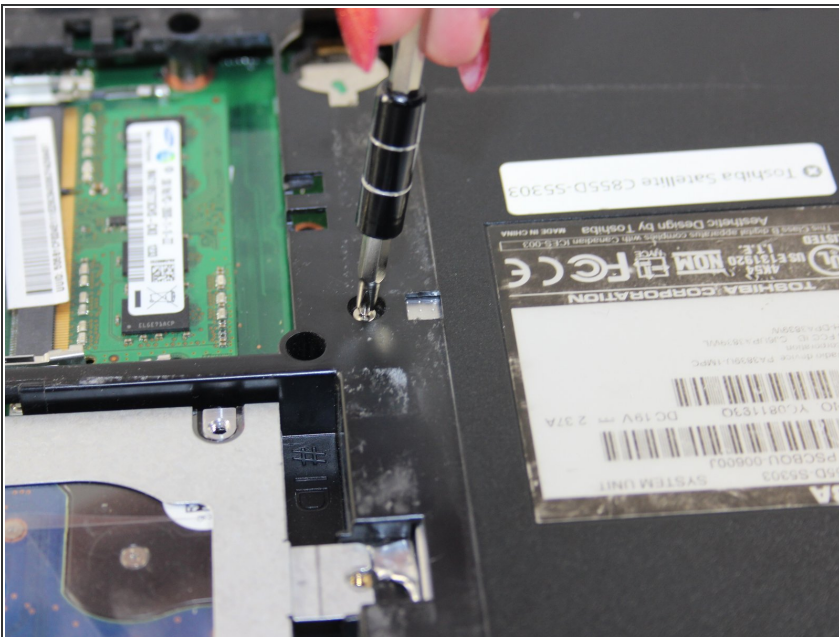
Step 1 — Disc Drive



- To begin, locate the middle L-shaped panel on the back of the device. Remove the one 7mm long screw (5mm head) located on that panel.
- Once the screw is removed, lift the panel by grabbing the indentation by the screw and pulling upwards.

⚠ Be gentle when lifting, the panel could break if you apply too much force.

Step 2



- Locate the screw to the right of the RAM inside the panel. This screw is 6mm long (5mm head); remove it with a small Phillips head screwdriver.

Step 3



- Now that the single screw is removed, you should be able to smoothly slide out the disc drive.
- Do this by grabbing the tray located on the right edge of your device and pulling out.

To reassemble your device, follow these instructions in reverse order.