



# Toshiba Satellite C855D-S5303 Fan Replacement

If your laptop feels hotter than normal, your internal fan may be dirty or damaged. Here's a step by step guide showing how to access the fan and then replace if need be.

Written By: Courtney Burns



---

## INTRODUCTION

This guide will show you how to replace your laptops fan. This process requires only a small Phillips head screwdriver and your hands.



### TOOLS:

- [Small Phillips Head Screwdriver](#) (1)
-

## Step 1 — Battery



- Lay your laptop upside down on a flat surface.
- Power off your laptop and unplug the charger.
- ⚠ Make sure you allow the laptop time to cool so that you aren't removing a hot battery.

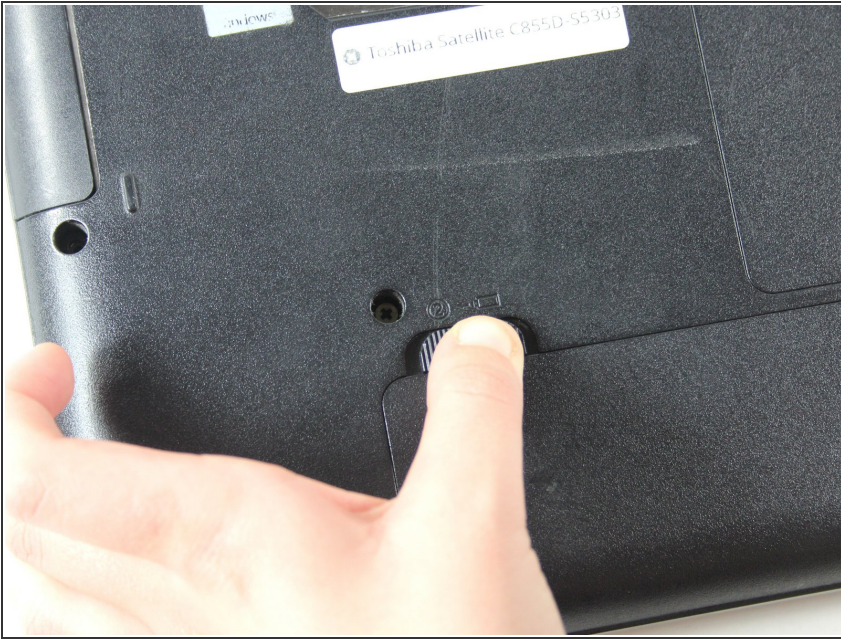
## Step 2



- Locate the right eject switch, labeled "1".
- Slide the switch all the way to the right and it should stay in place.



### Step 3



- The second eject switch is on the left and it is numbered "2".
- Slide the switch to the left and remain pushing on it, because unlike switch "1" it will not stay in place on it's own.

### Step 4



- With hand still pushing the left switch, grab onto notch at the center of the two switches.
- Pull up and towards you. The battery will begin to lift out of the device.

## Step 5



- The battery can now be pulled out entirely. You are ready to replace it.

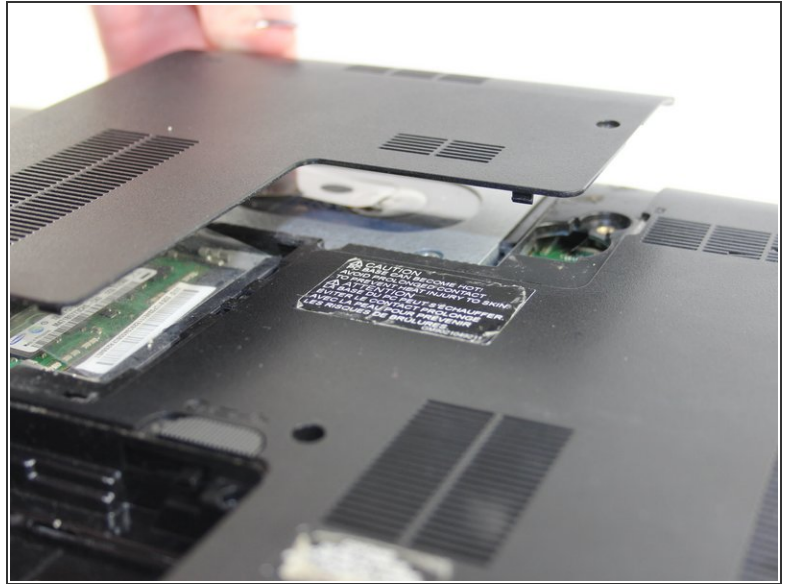
## Step 6 — Hard Drive



- Using a small Phillip's head screwdriver, unscrew the single 7 mm screw (5 mm head) on the L-

shaped panel on the backside of the laptop.

## Step 7



- Once the screw is removed, pry the panel upwards by gripping the groove pictured.

⚠ Be careful while removing the panel. Don't apply too much force when lifting as you may crack the plastic.



## Step 8



- Locate the hard drive. It is in a metal casing as pictured.
- To remove, grab the right side of the piece and slide leftwards.
- Lift up and out.

## Step 9 — Fan



- Now that you have your battery and hard drive removed, it's time to begin unscrewing the back panel.
- Taking a Phillip's head screwdriver, remove the two 7 mm (5 mm head) screws located around the spot where the hard drive once was.

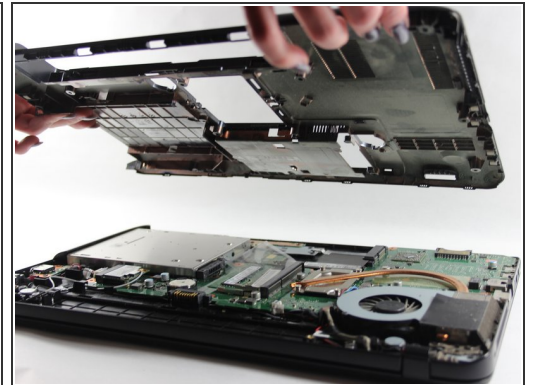
## Step 10



- There are nine 7 mm (5 mm head) screws located around the perimeter of the laptops back panel. Unscrew them all.

⚠ Be sure you put all the screws in a safe spot so you do not lose them.

## Step 11

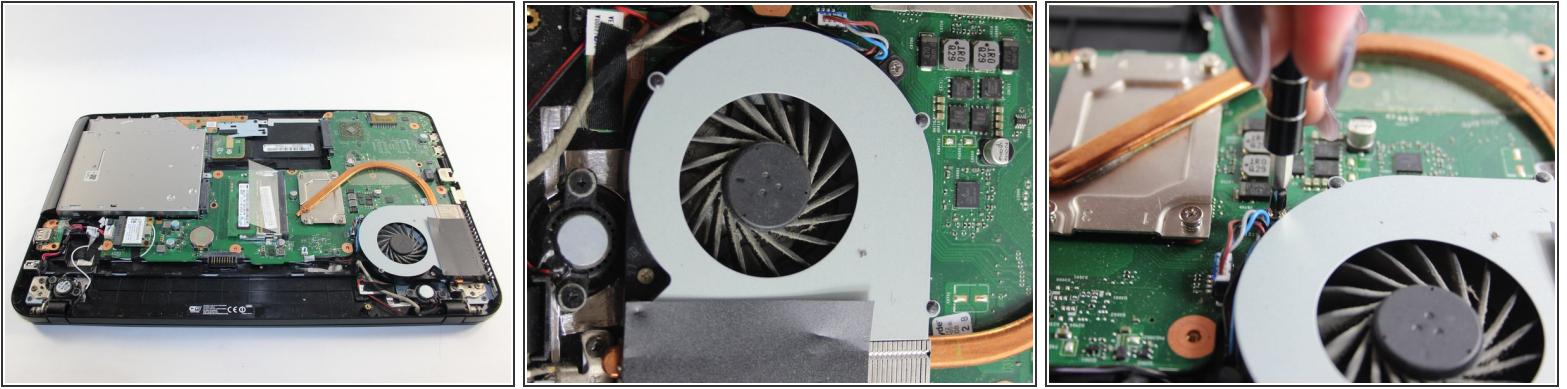


- Get a grip on one edge of the back panel that is now unscrewed and lift its entirety up and away from the device.

⚠ Be gentle when lifting the panel. Do not forcefully pull it off.



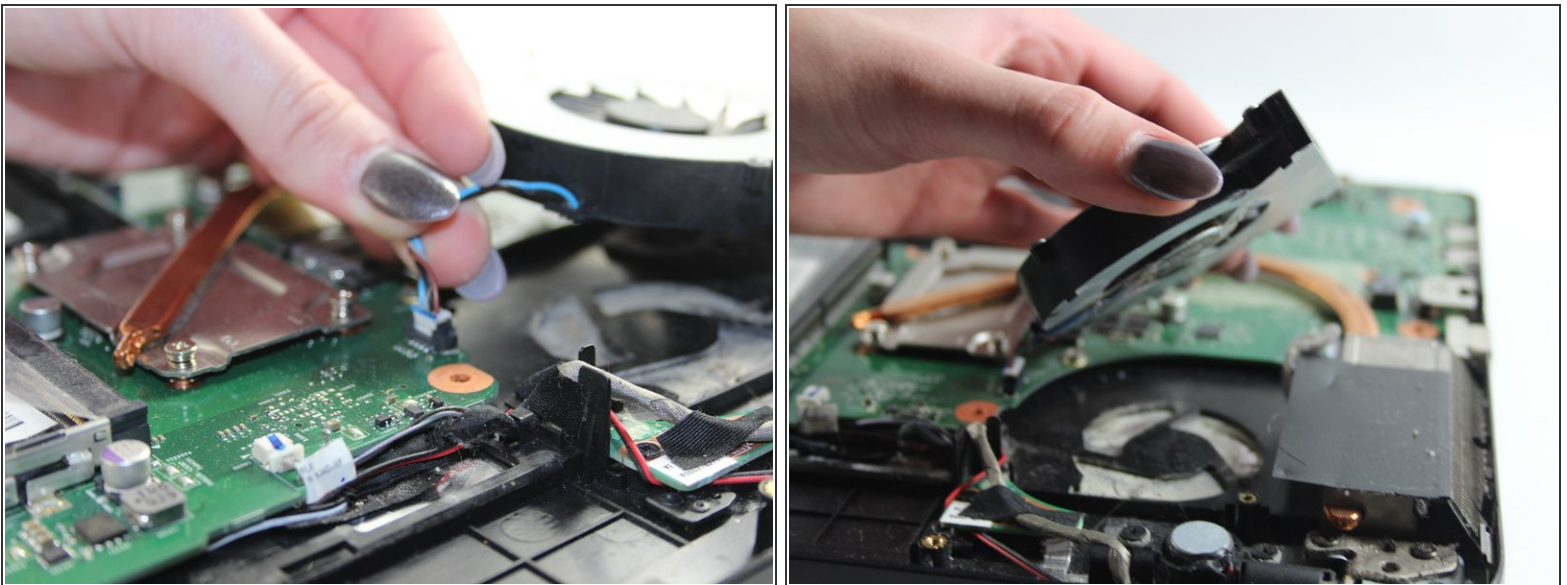
## Step 12



**i** Upon locating your device's fan, look to see if it is dirty or clogged with dust before continuing with the removal process. That may be your only issue.

- To remove the fan, unscrew the two 4 mm (3 mm head) screws that are around the fan.

## Step 13



- Unplug the wire located to the left of the fan by pulling gently upwards.

**!** Remember which way you pulled it out. You will want to replace the fan with the colors on the wire in the same orientation.

- Now that the fan is unplugged, you can lift it up and out of the device.

To reassemble your device, follow these instructions in reverse order.