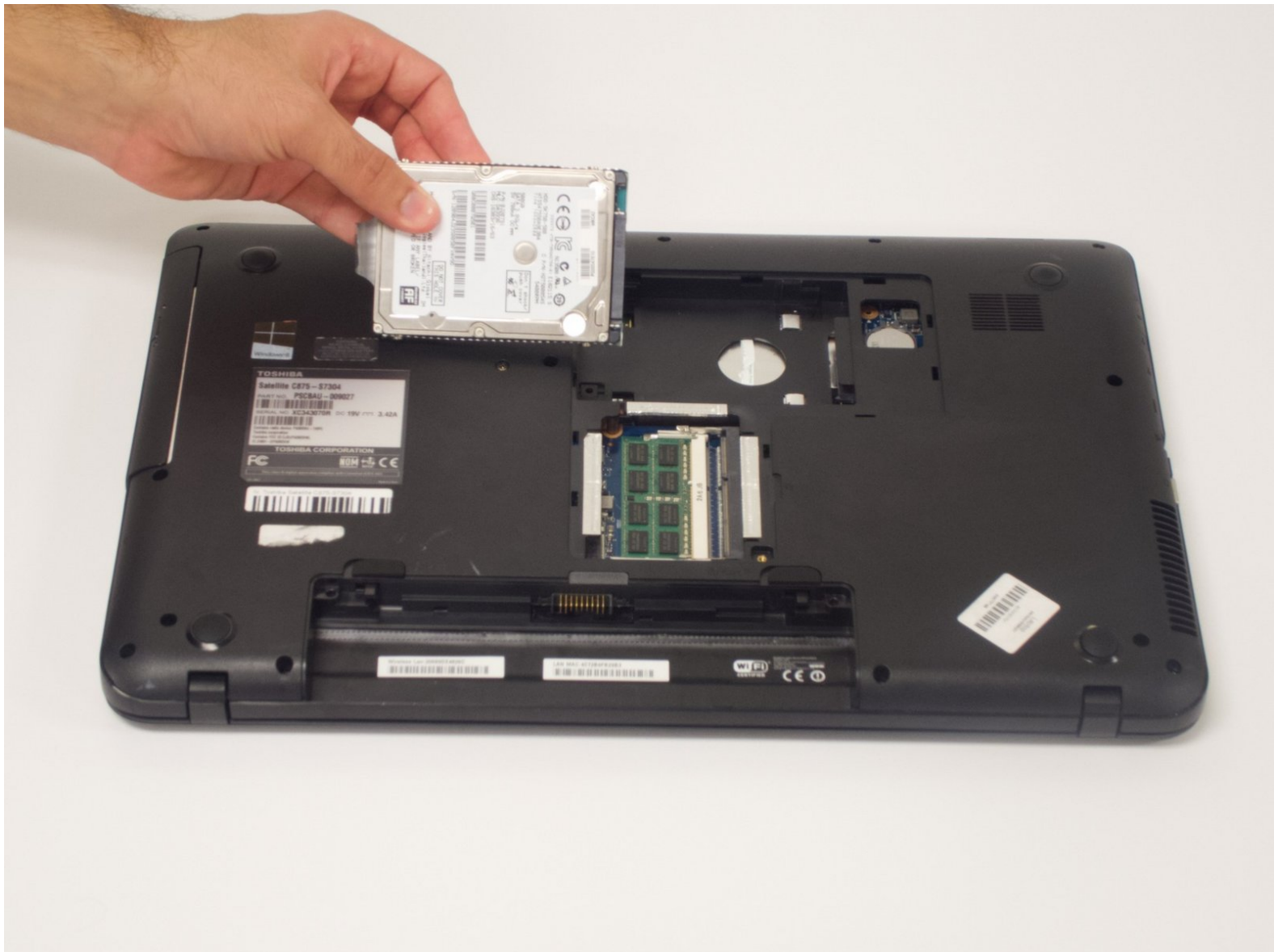




Toshiba Satellite C875-S7304 Hard Drive Replacement

Use this guide to replace the hard drive in your Toshiba Satellite C875-S7304.

Written By: Taimoor Arshad



INTRODUCTION

Use this guide to replace a defective or full hard drive in your Toshiba Satellite C875-S7304.

The hard drive is an important hardware component that stores and fetches your data. A faulty or failing hard drive can result in crashes, unusual noises, and error messages. In the case of total hard drive failure, your computer will cease to boot properly.

Review the troubleshooting page before using this guide. Some issues may be resolved through something as simple as a software update.

If your hard drive is full, you may want to upgrade your hard drive. This device supports hard drives in capacities ranging from 60 GB to 1 TB. Hard drives must be SATA 3.0 Gb/s, 2.5" wide, and up to 0.4" high.

If possible, back up your hard drive before replacing it so that you do not lose data during the replacement. Also, disconnect the laptop from any external power source and power off your laptop completely before beginning the hard drive replacement.



TOOLS:

- [Phillips Head Screwdriver: Size PH1](#) (1)
 - [iFixit Opening Tools](#) (1)
-

Step 1 — Battery



- Power off and unplug the charger from your device.
- Carefully flip your device upside down laying it onto a flat surface with the battery facing you.
- The two eject switches are located on the right and left side of the battery compartment.

Step 2



- Slide the right switch further towards the right to lock it into place.

Step 3



- Slide the switch to the left. Continue to push the switch because unlike the right switch, it will not lock into place.

Step 4



- Using both hands, continue to push the left switch and grasp onto the center notch located in between the right and left switch.
- Pull the center notch towards you and you will notice the battery will start to eject.

Step 5



- Lift the battery out carefully using two hands.


Step 6 — Hard Drive



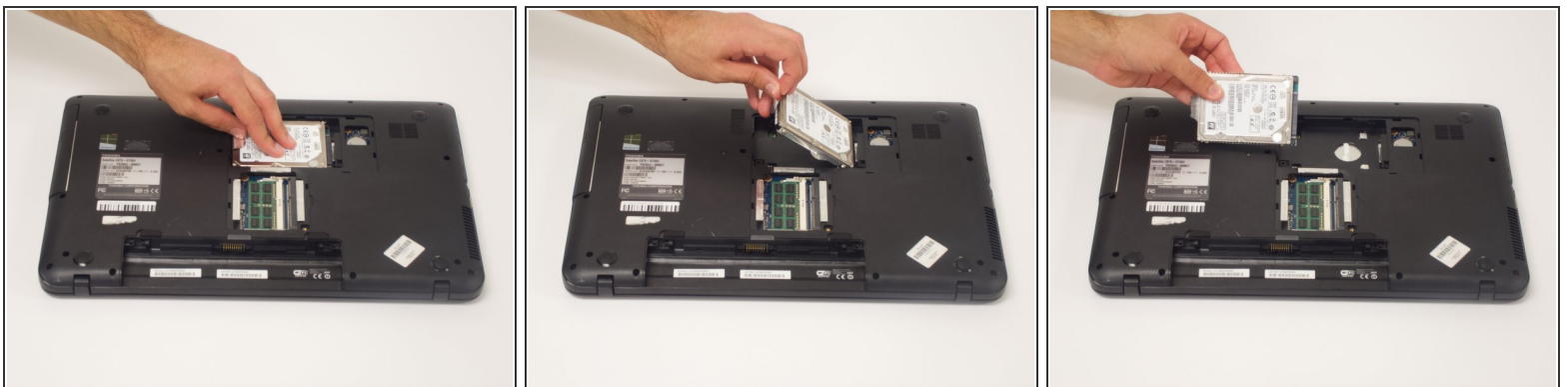
- Use a Phillips #1 to unscrew one 7.0 mm screw from the hard drive/RAM panel.
- ⓘ You cannot remove the screw from the panel. Simply unscrew it until loosened.


Step 7



- Wedge the plastic opening tool between the back panel and the hard drive/RAM panel near the screw.
 - Lift the end of the opening tool slowly until the hard drive/RAM panel separates on one side.
 - Repeat the steps above on the left side of the hard drive/RAM panel.
 - Pull the cover towards you and up from the device to remove it.
-  Hearing a popping noise while wedging the plastic opening tool is normal.

Step 8



- Pull the hard drive laterally to disconnect it from the laptop.
 - Use the clear tab to lift the hard drive out of the laptop.
-  When reassembling, make sure the hard drive lies flat in the laptop before reconnecting it.

To reassemble your device, follow these instructions in reverse order.