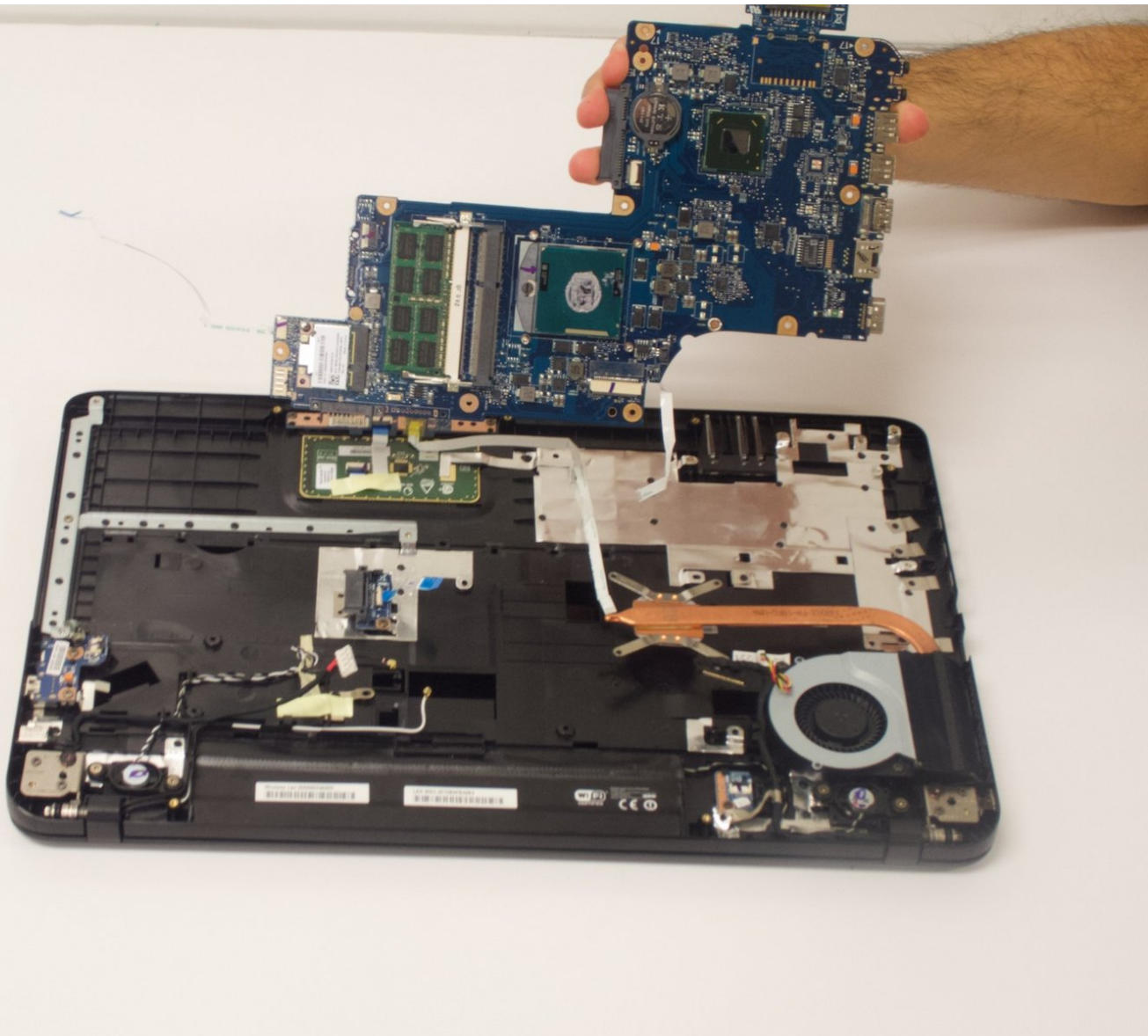




# Toshiba Satellite C875-S7304 Motherboard Replacement

Use this guide to replace the motherboard in your Toshiba Satellite C875-S7304.

Written By: Emma King



## INTRODUCTION

Use this guide to replace a faulty or dead motherboard in your Toshiba Satellite C875-S7304.

The motherboard is a printed circuit and is the foundation of a functioning laptop. If you notice your device suddenly stops working, it is likely due to a dead or dying motherboard.

A functional motherboard allows the laptop's components to communicate with one another. A damaged motherboard can cause damage to other components and prevent the laptop from functioning properly. Motherboards are often the most difficult pieces of hardware to diagnose because you have to rule out every other piece of hardware connected to it. If you notice multiple faults in laptop components, slow boot times, or inabilities in recognizing connected flash drives you may want to replace your motherboard.

Disconnect the laptop from any external power source and power off your laptop completely before beginning the motherboard replacement.



### TOOLS:

- [Phillips Head Screwdriver: Size PH1](#) (1)
  - [iFixit Opening Tools](#) (1)
-

## Step 1 — Battery



- Power off and unplug the charger from your device.
- Carefully flip your device upside down laying it onto a flat surface with the battery facing you.
- The two eject switches are located on the right and left side of the battery compartment.

## Step 2



- Slide the right switch further towards the right to lock it into place.

### Step 3



- Slide the switch to the left. Continue to push the switch because unlike the right switch, it will not lock into place.

### Step 4



- Using both hands, continue to push the left switch and grasp onto the center notch located in between the right and left switch.
- Pull the center notch towards you and you will notice the battery will start to eject.



## Step 5



- Lift the battery out carefully using two hands.

## Step 6 — Motherboard



- Carefully flip the device back over so that the 'TOSHIBA' logo faces away from you.
- Open the laptop to display the keyboard.

## Step 7



- Using the iFixit opening tool, carefully remove the black plastic bar below the keyboard.

## Step 8



- Pry the keyboard up and apart from the device.
- Disconnect the ribbon cable under the keyboard.

## Step 9



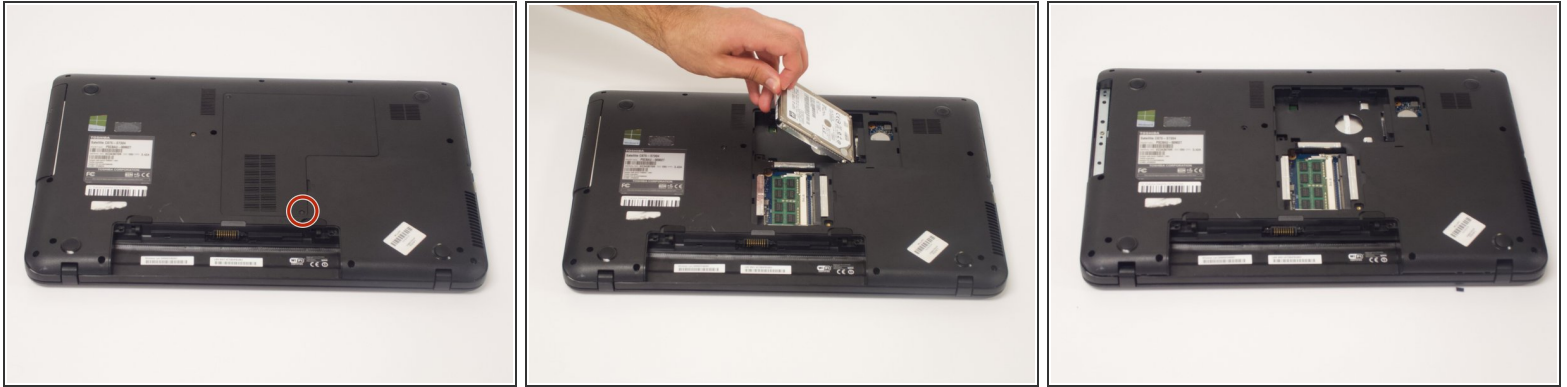
- Use a Phillips #1 screwdriver to remove all eight of the screws under the keyboard.

## Step 10



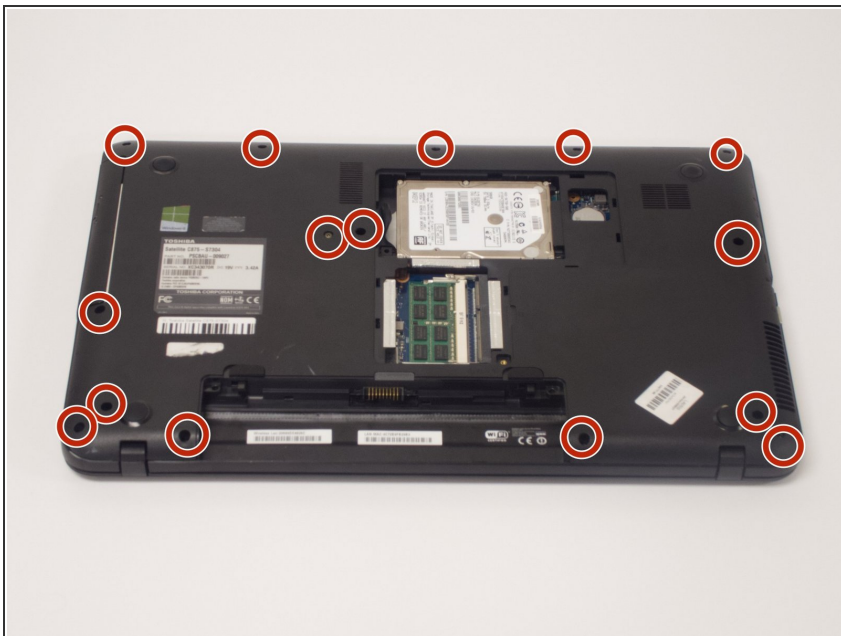
- Close the device and carefully flip it back over.

## Step 11



- Use a Phillips #1 to unscrew one 7.0 mm screw from the hard drive/RAM panel and remove panel.
- Slide the hard drive laterally first and then lift the hard drive up using the clear tab.
- ⓘ You cannot remove the screw from the panel. Simply unscrew it until loosened.

## Step 12



- Use a Phillips #1 to remove all 15 of the screws holding the bottom panel intact.



## Step 13



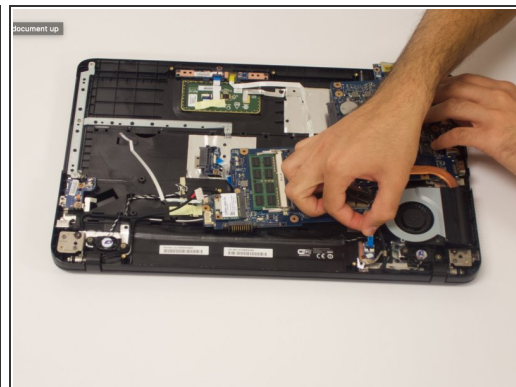
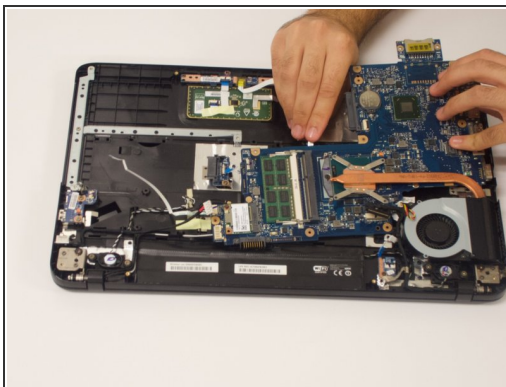
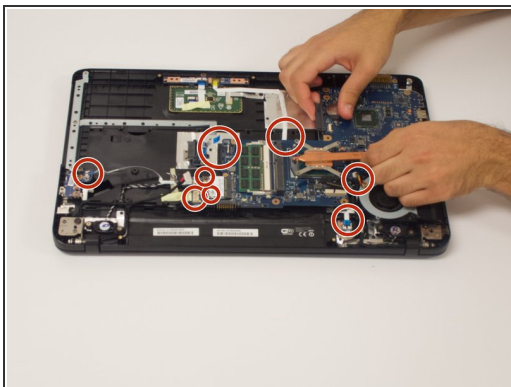
- Grab the optical drive on either side.
- Pull the drive out of the device laterally.

## Step 14



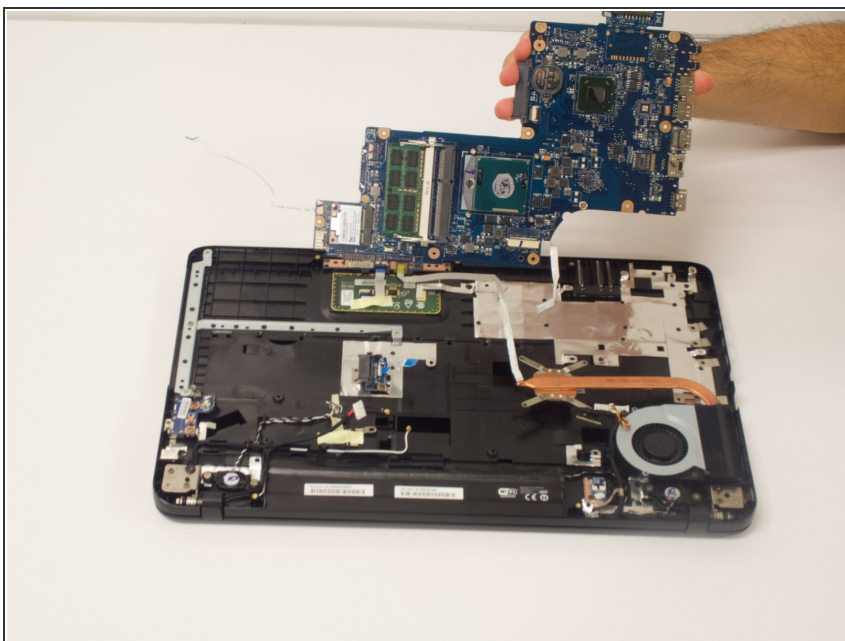
- Gently pry open the entire bottom panel, pulling upward to remove the panel from the device.

## Step 15



- Remove all wiring from the motherboard and pry it from the device slowly making sure that no ribbons or wires are connected.

## Step 16



- Gently remove the motherboard from inside the device. You are now ready to replace the motherboard.

To reassemble your device, follow these instructions in reverse order.