



Toshiba Satellite CL-15t-t-B1204X Battery Replacement

Battery replacement for the Toshiba Satellite CL-15t-tB1204X.

Written By: RJ Witschger



INTRODUCTION

This guide will show you how to open up your device and remove the battery in the event that your device has power issues.



TOOLS:

- [Phillips #0 Screwdriver](#) (1)
 - [Spudger](#) (1)
-

Step 1 — Battery



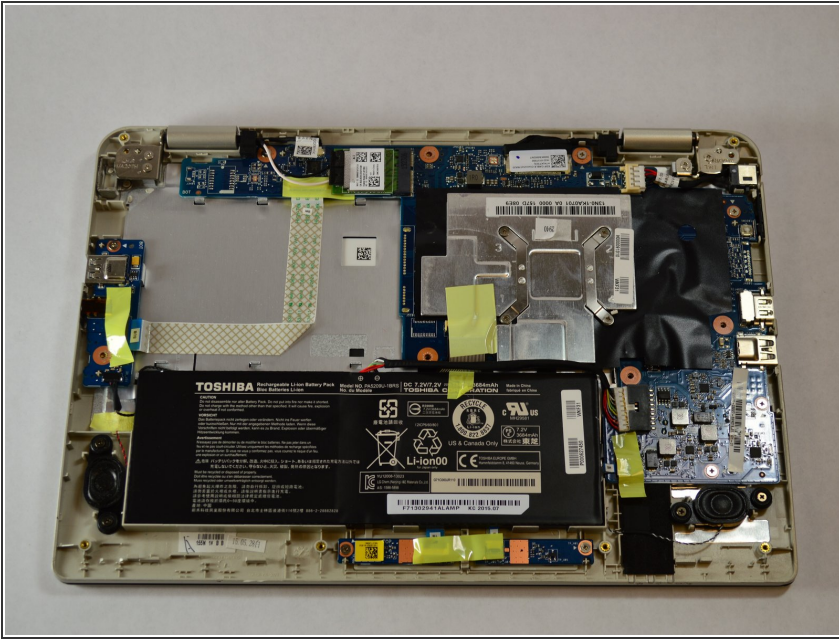
- Flip the laptop over so the bottom of the device is facing upward.

Step 2



- Unscrew the 10 5mm Phillips screws, located on the bottom side of the notebook using the PH1 bit and the Magnetic Driver.

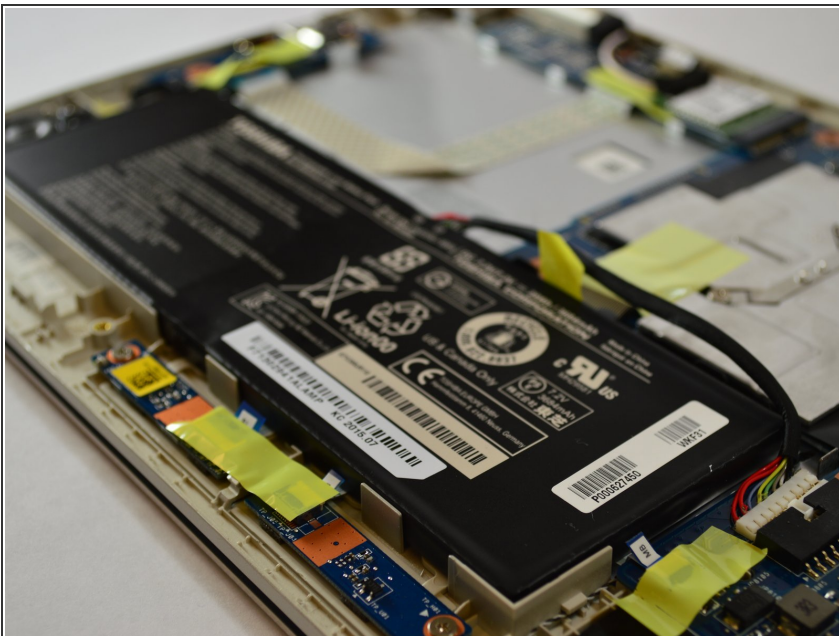
Step 3



- Pry open the bottom cover of the notebook with the plastic spudger tools. Slide a thin tool along the edges without ports to pop open the latches.

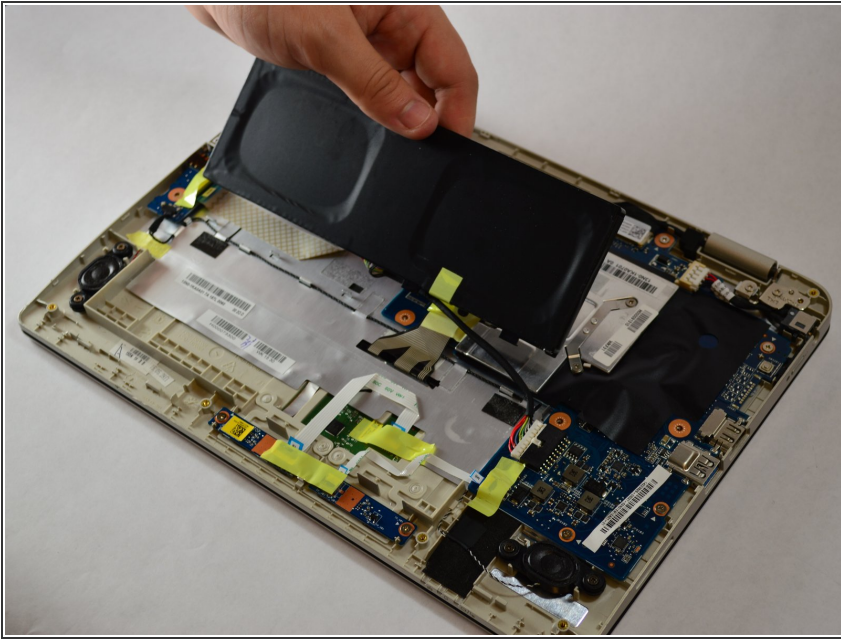
⚠ Be careful not to bend or crack the plastic back cover.

Step 4



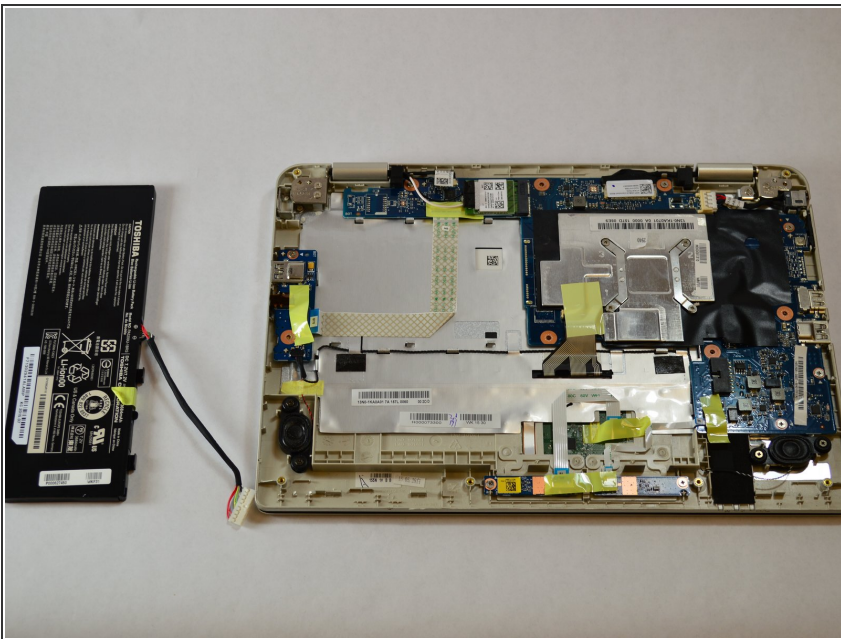
- Remove the 1" yellow tape on top of the battery. This piece of tape is holding down the battery connection cable.

Step 5



- Lightly grip the battery on the two longest sides. Gently pull up until the adhesive on the notebook is separated from the battery.

Step 6



- Carefully unplug the battery from the device motherboard.

To reassemble your device, follow these instructions in reverse order.