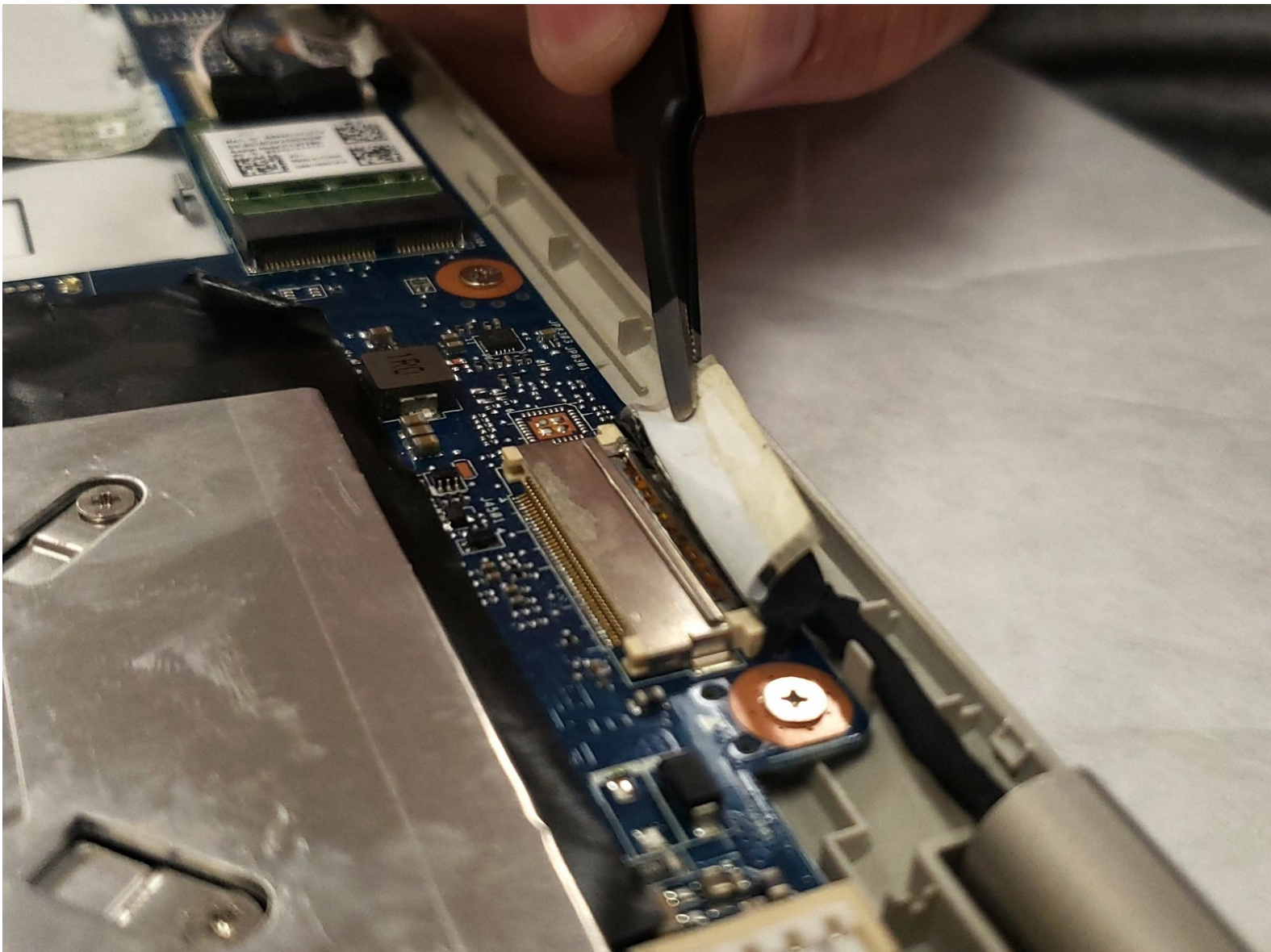




Toshiba Satellite CL15t-B1204X Screen Display Assembly Replacement

This guide shows how to replace the screen display assembly on a Toshiba Satellite CL15t-B1204X. The display might stop working due to age, or damage.

Written By: Matthew Hook



INTRODUCTION

This guide will walk you through step by step on how to replace the screen display assembly on a Toshiba Satellite CL15t-b1204x. The screen display is vulnerable to any type of physical damage, whether that be from exposure to liquids or screen crackings. It may also need to be replaced if it stops working after a long period of time. One thing to keep in mind, is that the display comes as a full assembly, and a new assembly can be ordered online.



TOOLS:

- [Spudger](#) (1)
 - [Phillips #0 Screwdriver](#) (1)
 - [Phillips #1 Screwdriver](#) (1)
 - [iFixit Opening Tools](#) (1)
 - [Tweezers](#) (1)
-

Step 1 — Battery



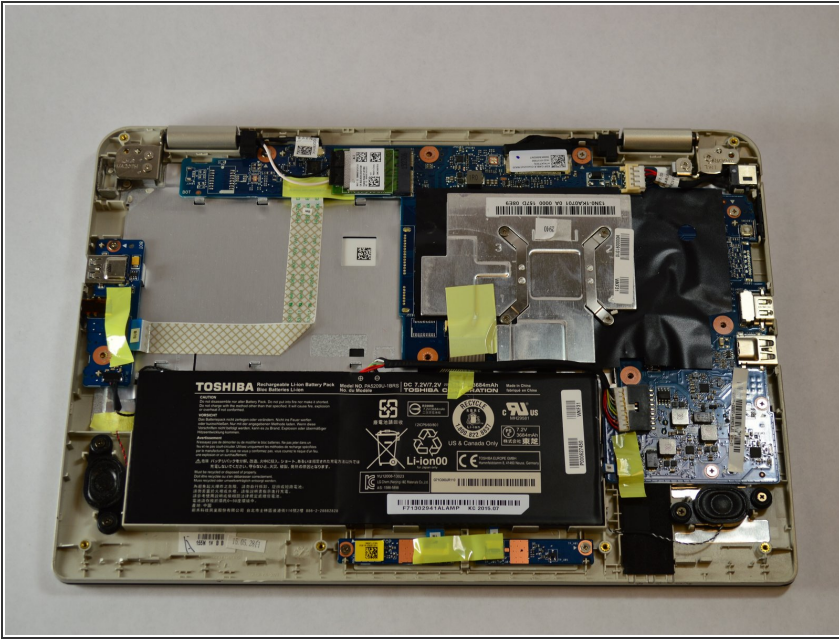
- Flip the laptop over so the bottom of the device is facing upward.

Step 2



- Unscrew the 10 5mm Phillips screws, located on the bottom side of the notebook using the PH1 bit and the Magnetic Driver.

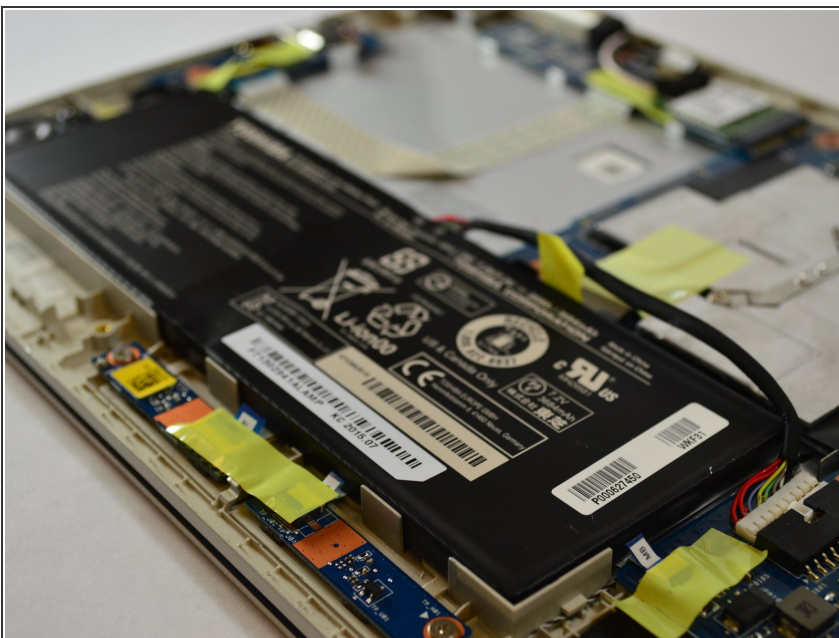
Step 3



- Pry open the bottom cover of the notebook with the plastic spudger tools. Slide a thin tool along the edges without ports to pop open the latches.

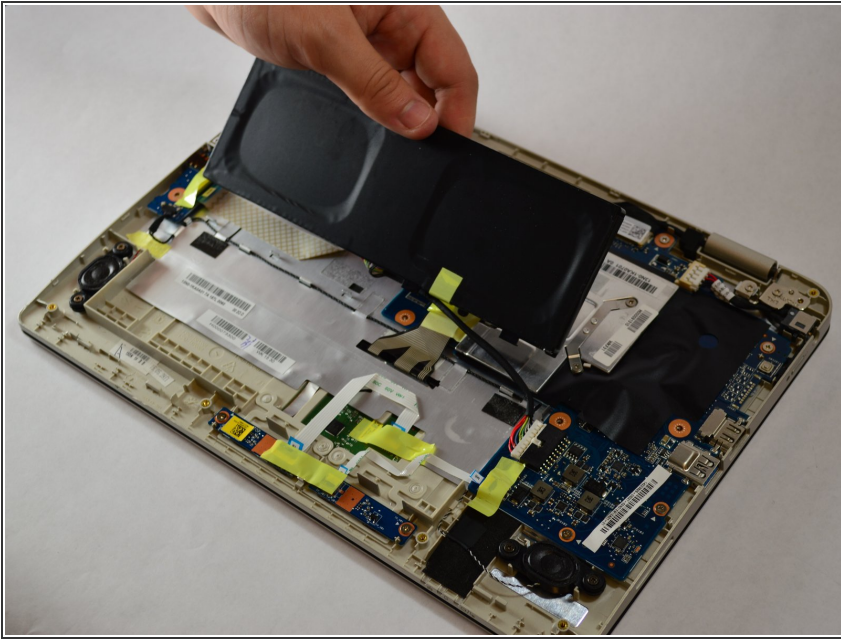
⚠ Be careful not to bend or crack the plastic back cover.

Step 4



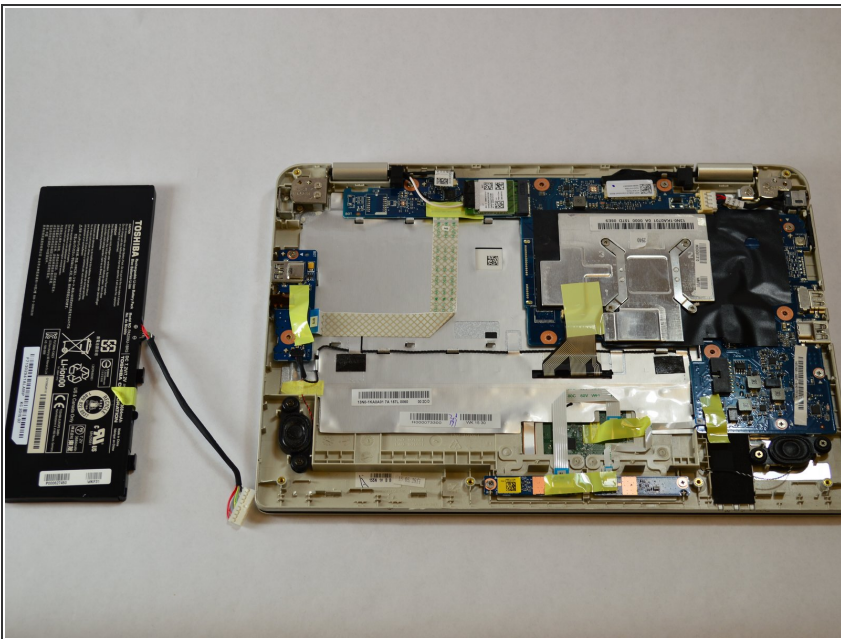
- Remove the 1" yellow tape on top of the battery. This piece of tape is holding down the battery connection cable.

Step 5



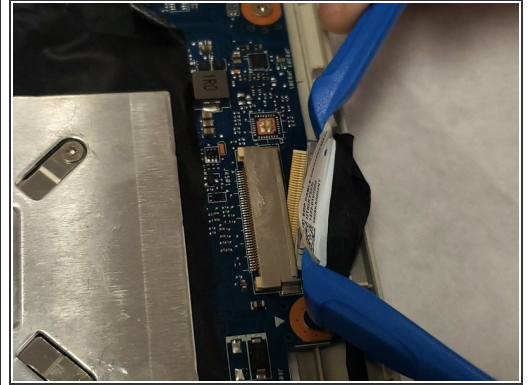
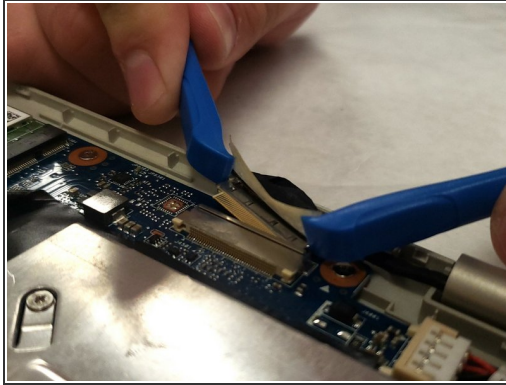
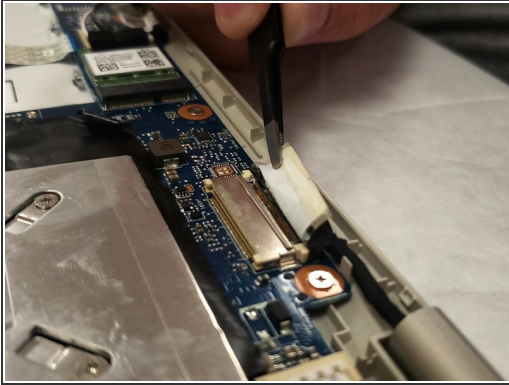
- Lightly grip the battery on the two longest sides. Gently pull up until the adhesive on the notebook is separated from the battery.

Step 6



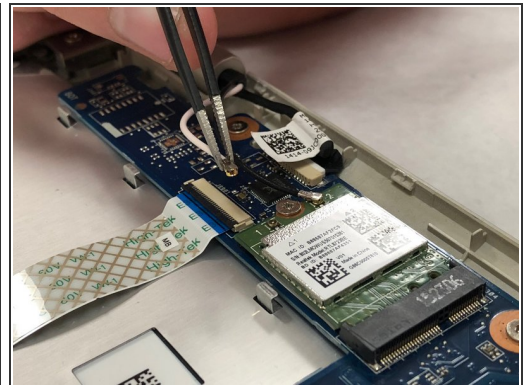
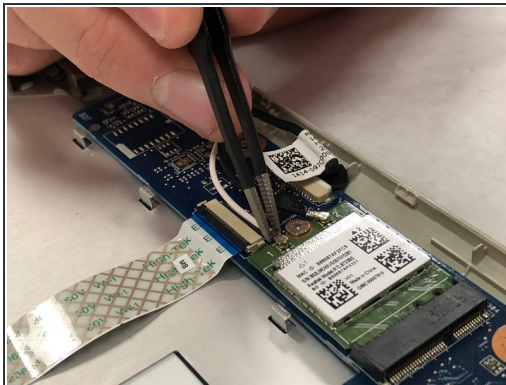
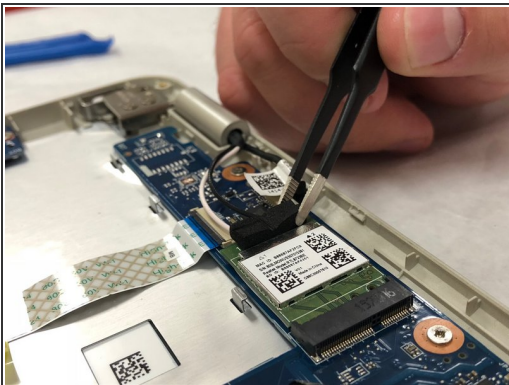
- Carefully unplug the battery from the device motherboard.

Step 7 — Screen Display Assembly



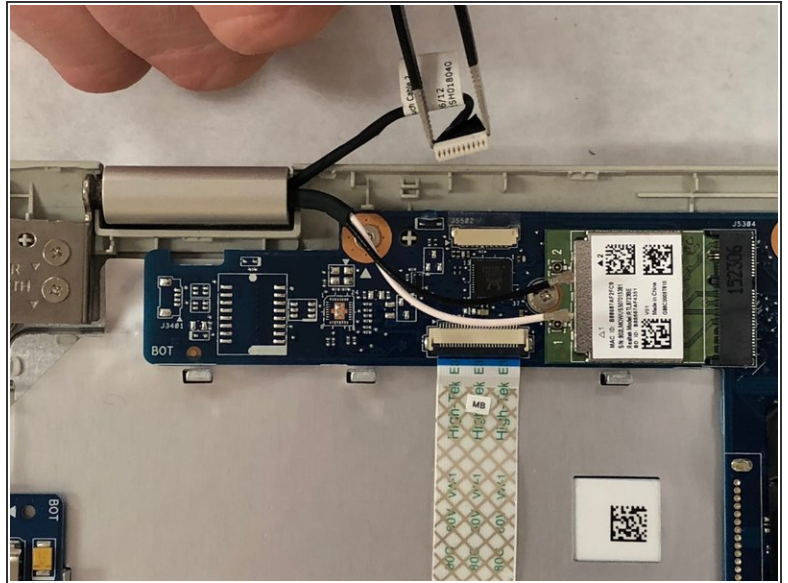
- Unplug the power connector by pulling back the tape and sliding the connector away using the blue opening tool.

Step 8



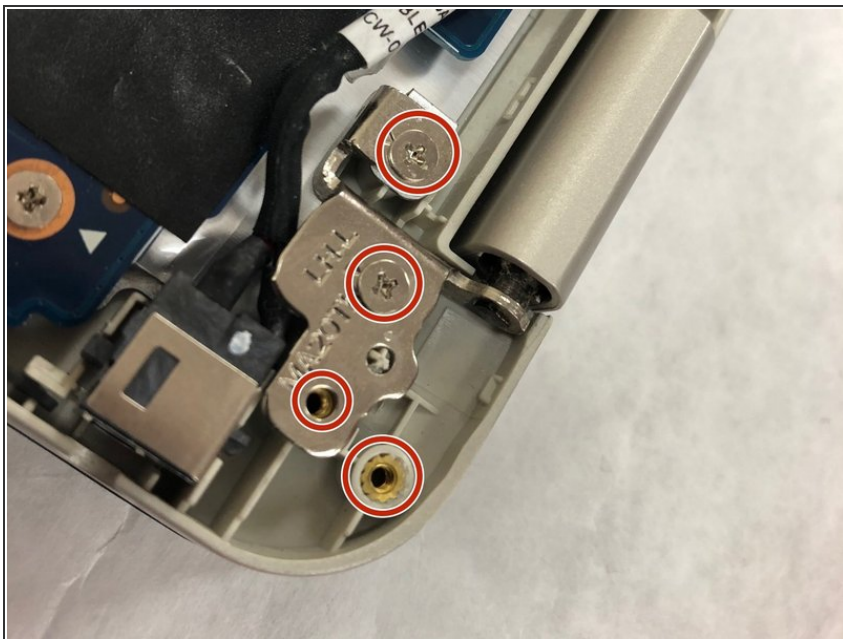
- Remove the foam and unplug the black and white coaxial cables to the network card by pulling upward using the black tweezers.

Step 9



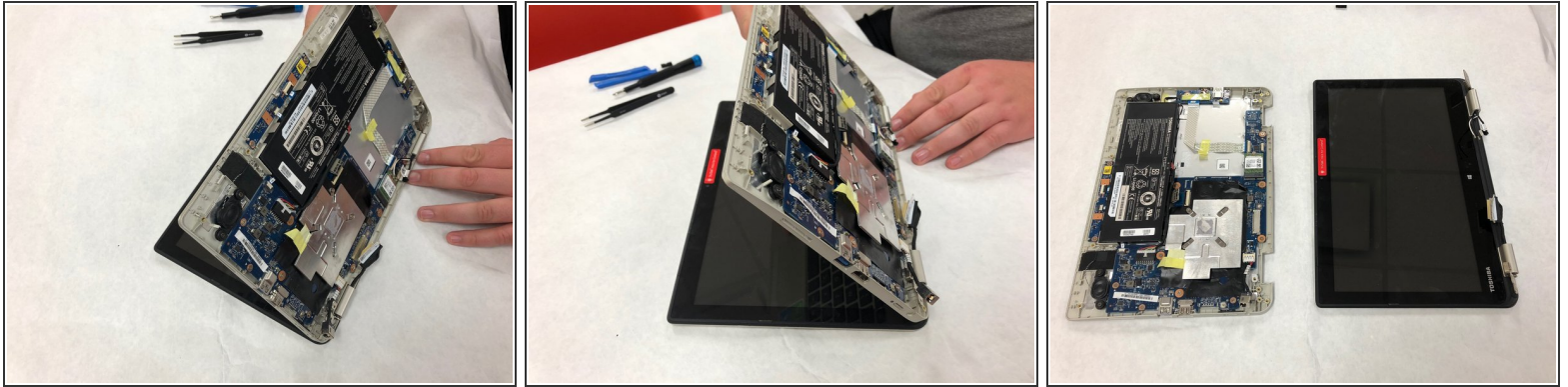
- Remove the black webcam connector by pulling backwards with the tweezers.

Step 10



- Using a Phillips #1 screwdriver, remove four 5.00 mm screws from both corner hinges of the display assembly.

Step 11



- Open the laptop and remove the display assembly from the keyboard assembly.

To reassemble your device, follow these instructions in reverse order.