



Toshiba Satellite Charging port Replacement

This guide's purpose is to expand on the variety of laptop structures.

Written By: Austin Wattles



INTRODUCTION

I am making a guide to explain in detail how to replace a charging port on a Toshiba Satellite laptop. While iFixit has many guides up, I was unable to find one that matched the design of the laptop I chose to work on. I believe that this guide will help expand on the vast knowledge that is already available, and will enable many consumers to save money and have success when replacing a charging port.



TOOLS:

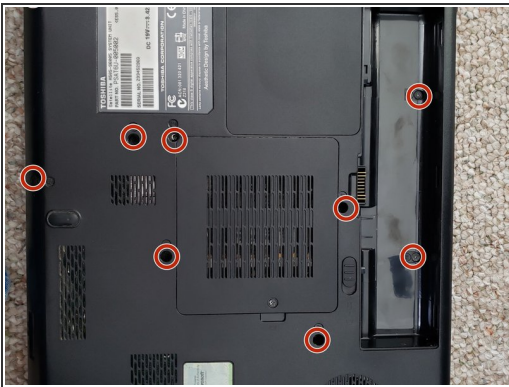
- [Phillips #0 Screwdriver](#) (1)
 - [Spudger](#) (1)
-

Step 1 — Remove The battery



- Do not forget to remove the two screws under the battery.

Step 2 — Remove all screws from the bottom



- Remove covers for hard drive/ram

Step 3 — Remove hard drive/ ram sticks



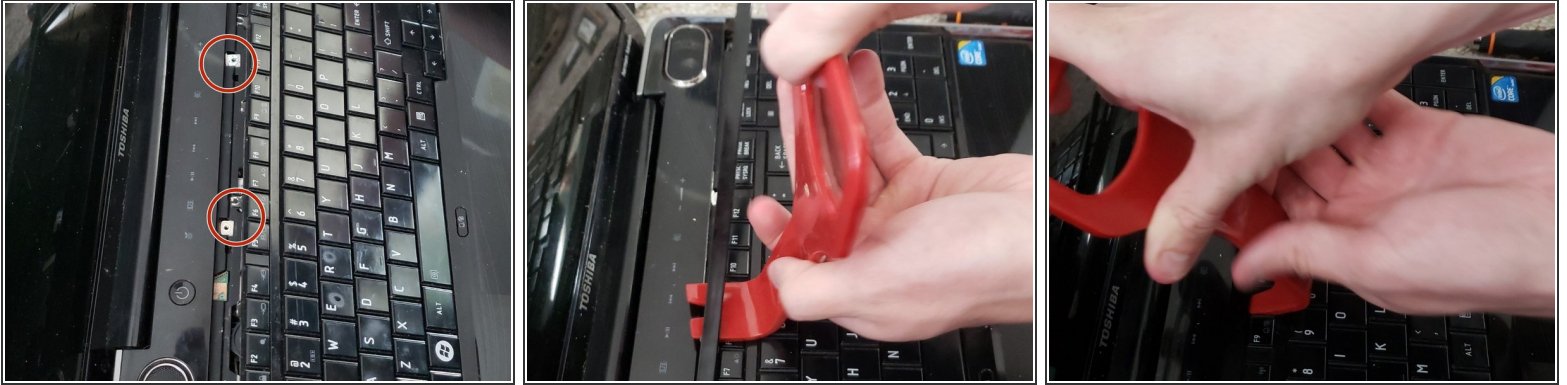
- once removing the screw for the hard drive. gently pull on the ribbon to unplug it.
- use a plastic removal tool to gently push the sides of the clip holding both ram sticks into place. After that, simply pull them out.

Step 4 — Remove disc drive



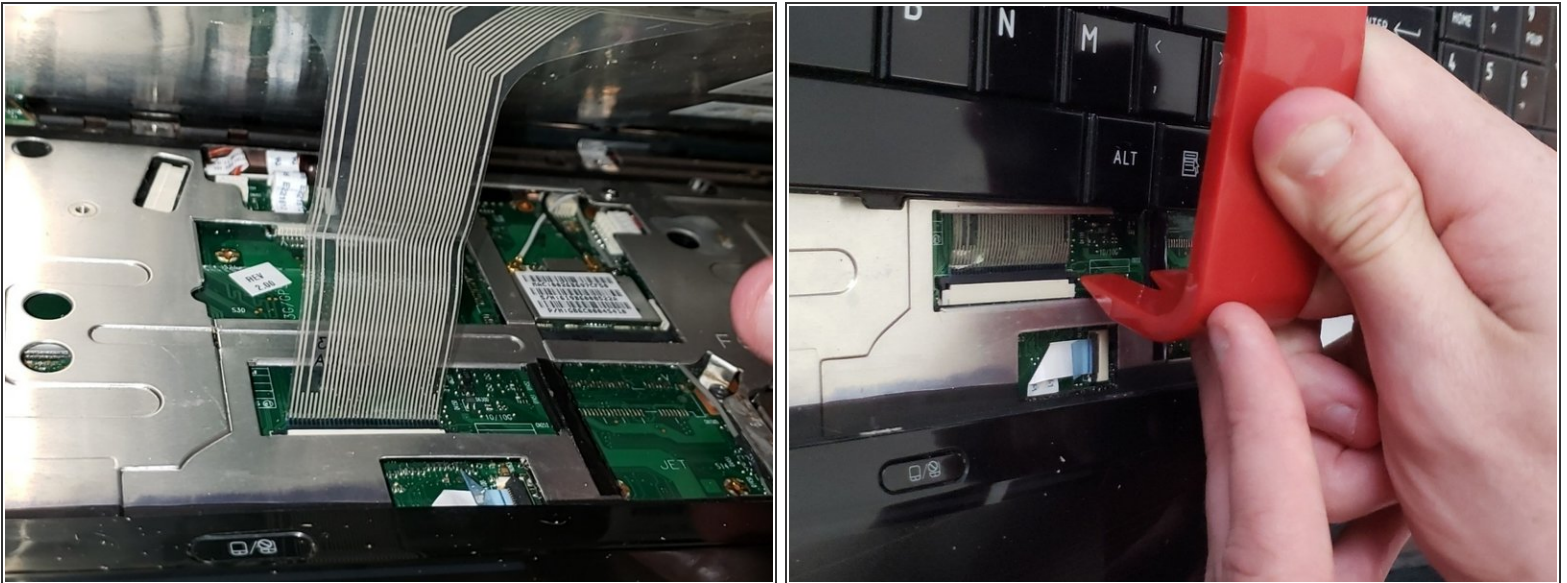
- Do not forget to remove the three screws under the disc drive. I found the best way to do this is to use a long screwdriver with a small magnetic Phillips tip.

Step 5 — Remove trip piece on top of keyboard



- Gently pry up with a plastic removal tool on the bottom of the trim piece in the little slots that are cut out.
- Remove the four screws under the small piece.

Step 6 — Remove Keyboard



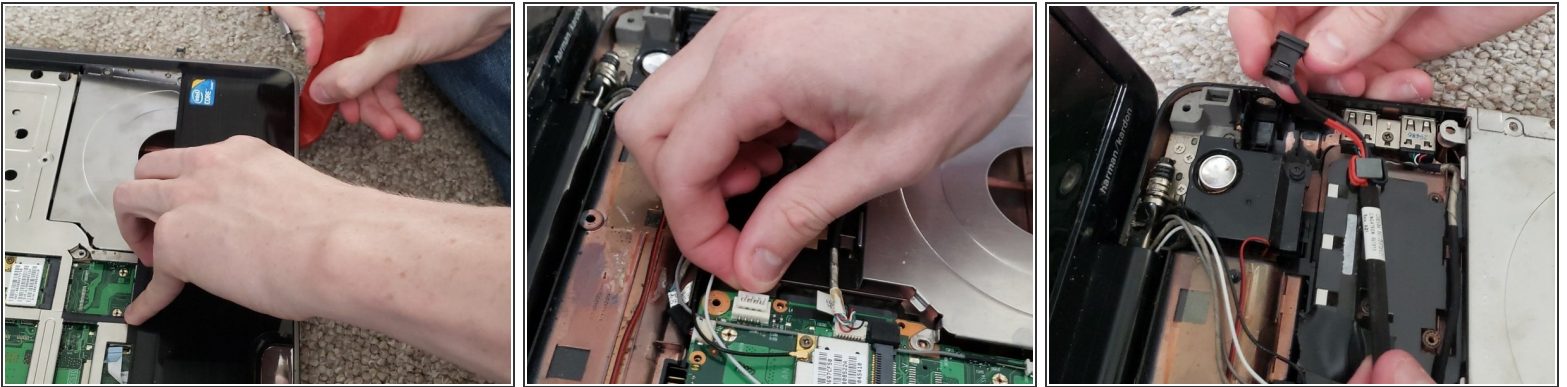
- Gently pull up on keyboard once removing the four screws
- There will be a ribbon, use a plastic piece removal tool to push against the small black clip holding it in place.

Step 7 — Remove visible screws



- Near the top of the keyboard there will be two items to unplug. Gently unplug both of them.
- Near the bottom of the picture you'll see an area where a ribbon is plugged in. Simply apply the same procedure you did for the keyboard to remove this safely.

Step 8 — Remove Cover



- Now the charging port will be exposed. Simply unplug and remove the old one, and plug in and properly place the new charging port.
- Follow the steps in reverse to reassemble the laptop.

To reassemble your device, follow these instructions in reverse order.