



Toshiba Satellite Click 2 L35W-B3204 Screen Replacement

How to replace a Toshiba Satellite Click 2 L35W-B3204 screen.

Written By: Lexi Lannigan



INTRODUCTION

If your laptop does not respond to touch, or has issues with the display, this guide will help you replace the screen. This guide does not involve the keyboard portion of the laptop, so remove the keyboard from the screen prior to starting this guide.



TOOLS:

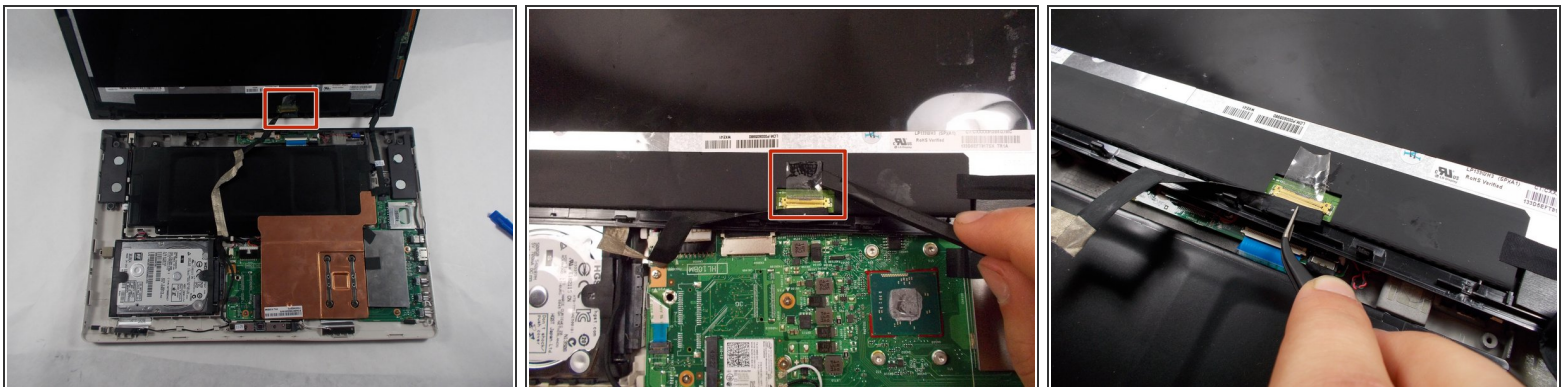
- [iFixit Opening Tools](#) (1)
 - [Tweezers](#) (1)
 - [Spudger](#) (1)
-

Step 1 — Screen



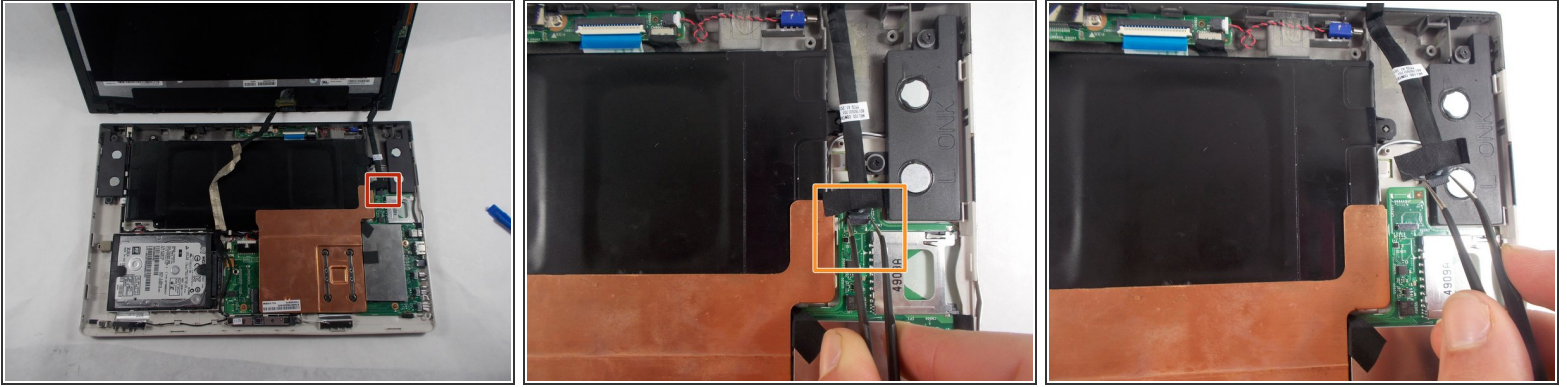
- Begin by inserting the plastic opening tool into the lip that lies between the screen and the plastic housing and gently prying it open. The best place to begin the screen removal is the bottom left side of the screen.
- Continue to work your way around the screen with the opening tool until all the clips are undone and the screen is free.
- Lift screen off of plastic cover to expose the internal components.

Step 2



- Locate the wide, golden connection on the bottom of the screen. Use the black spudger to peel away the tape holding it in place.
- Use tweezers to gently remove the plug from the screen.

Step 3



- Trace the black ribbon cable that begins on the right of the screen. This cable is connected to the upper part of the motherboard, which is located near the right speaker.
- Using tweezers, gently grasp the plug on the end of the ribbon cable and remove it from the motherboard.

Step 4



- Your screen is now completely detached from the internal components.

To reassemble your device, follow these instructions in reverse order.