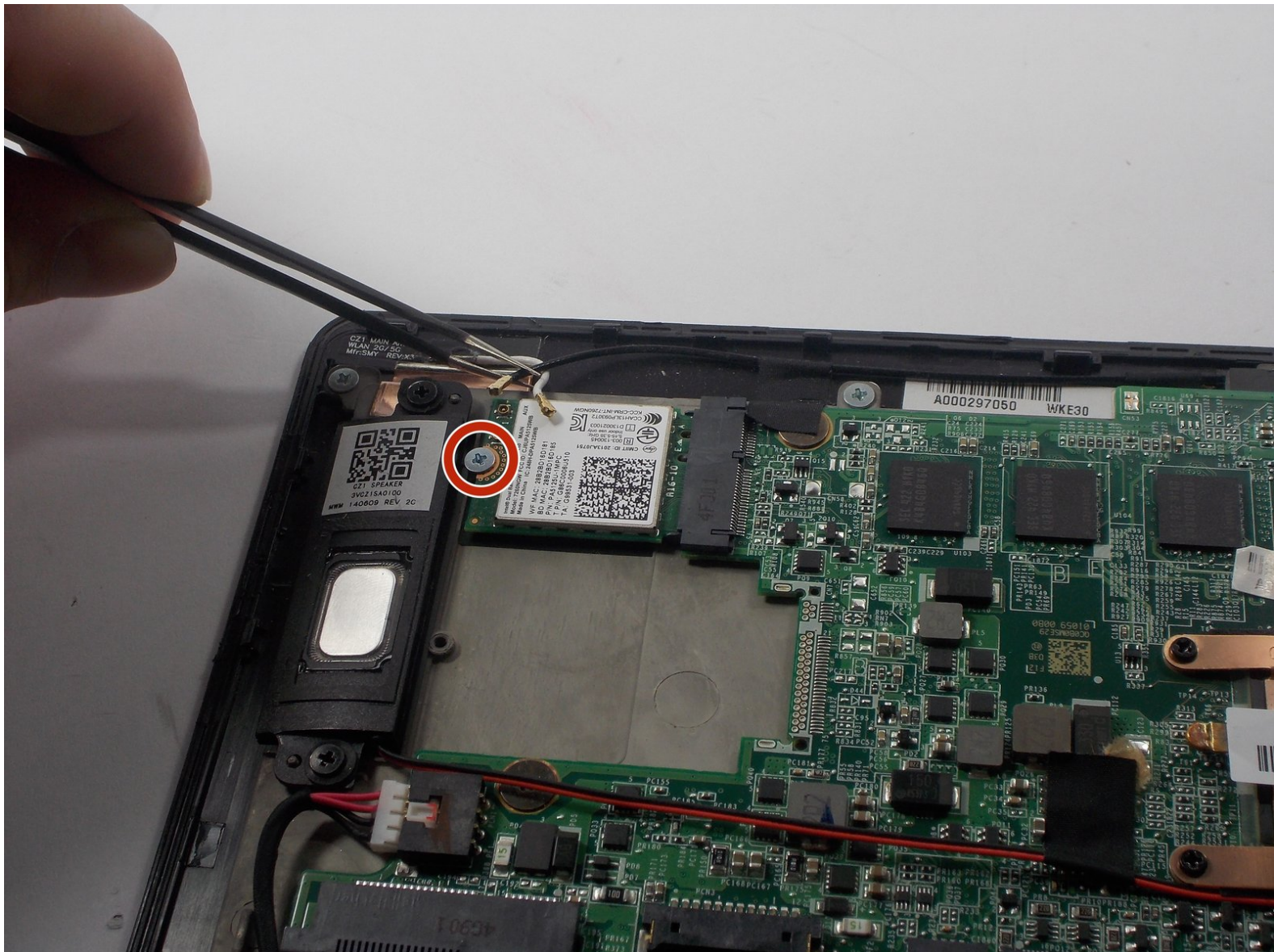




Toshiba Satellite Click 2 Pro Wifi Card Replacement

In this guide you will learn how to properly remove the WiFi card.

Written By: Paul DeOrsey



INTRODUCTION

To start this guide make sure you have the appropriate tools and materials. This step is quite simple and easy to follow for the removal of the WiFi card if any damage has occurred to it.

TOOLS:

- [iFixit Opening Tools](#) (1)
 - [Tweezers](#) (1)
 - [Phillips #0 Screwdriver](#) (1)
-

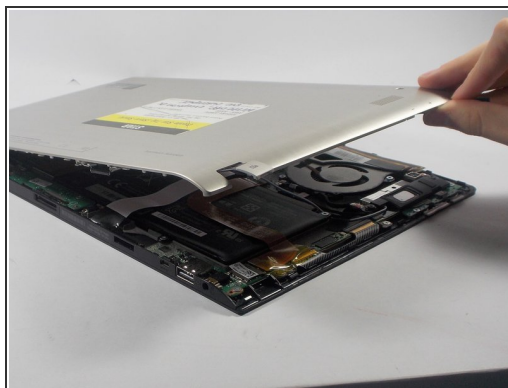
Step 1 — Battery



! Working on your device while it is turned on may result in electric shock. Make sure to shut down and unplug your device before you begin.

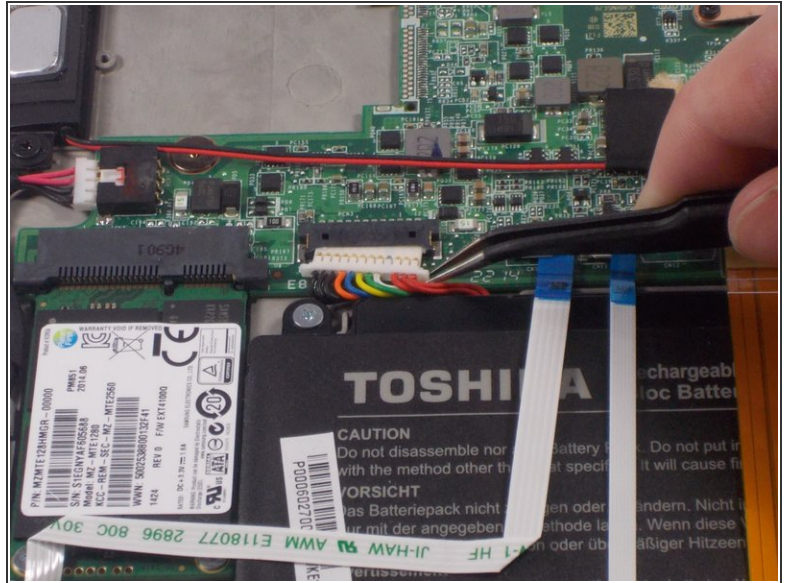
- Push down on the tablet sides until you feel a click, then pull up.
- i** This will separate the tablet from the detachable base, make sure to hold down the keyboard for easier detachment.

Step 2



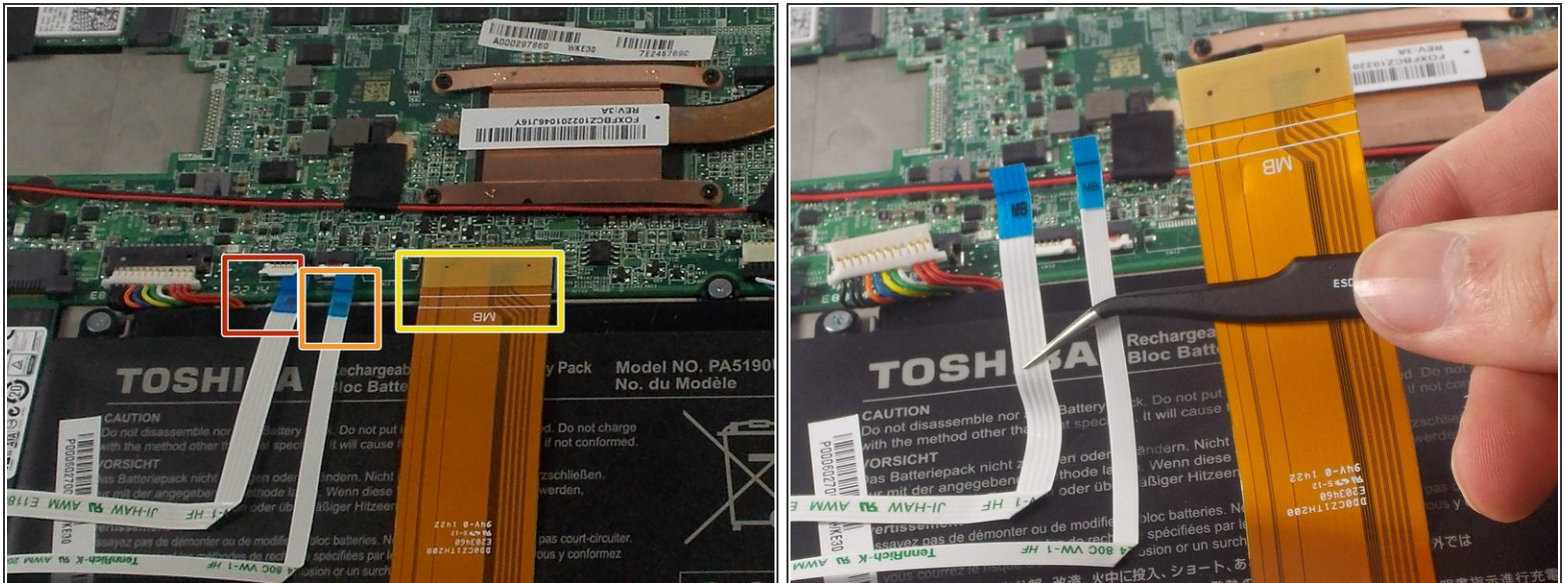
- Remove the base of the tablet from the screen using a plastic opening tool.
- i** Make sure to separate the base evenly on both sides when removing it from the screen.

Step 3



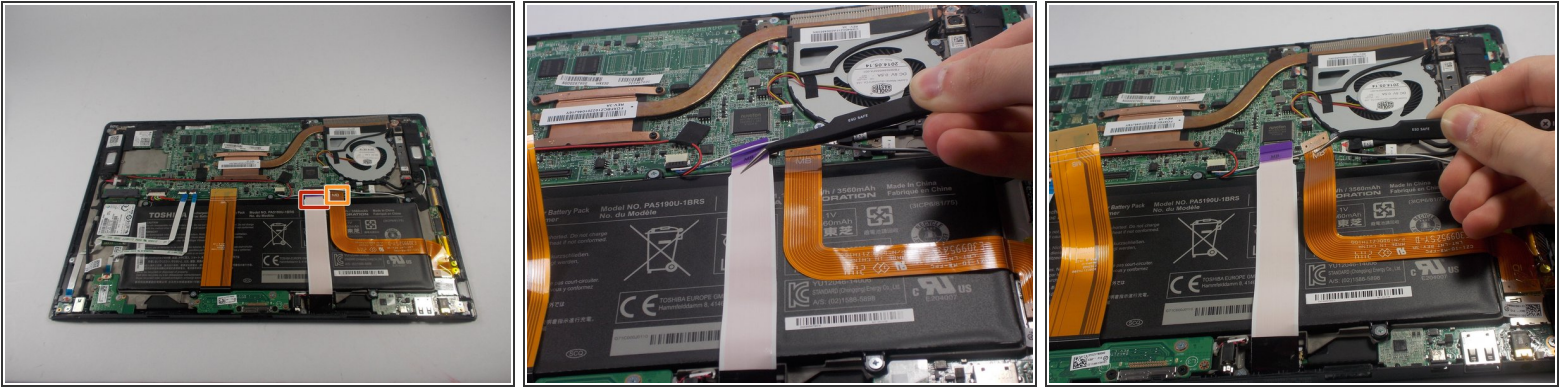
- Remove the battery power connector using ESD safe tweezers.

Step 4



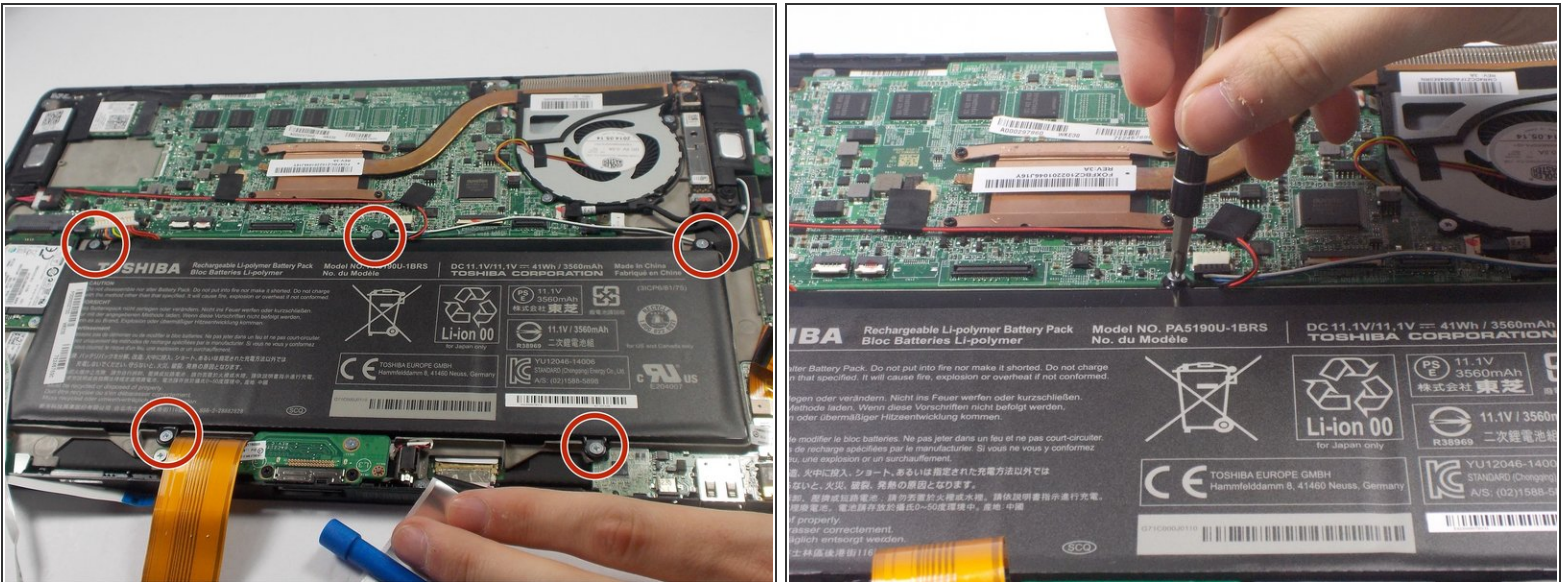
- Remove the LED ribbon cable using ESD safe tweezers.
 - Remove the SIM card ribbon cable using ESD safe tweezers.
 - Remove the Docking connector ribbon cable using plastic opening tool.
- i** The ribbons may be stuck to the battery so make sure to peel off gently to prevent damage.
- !** Make sure to flip up the white connector attached to the LED and Sim Card ribbons before removing them .

Step 5



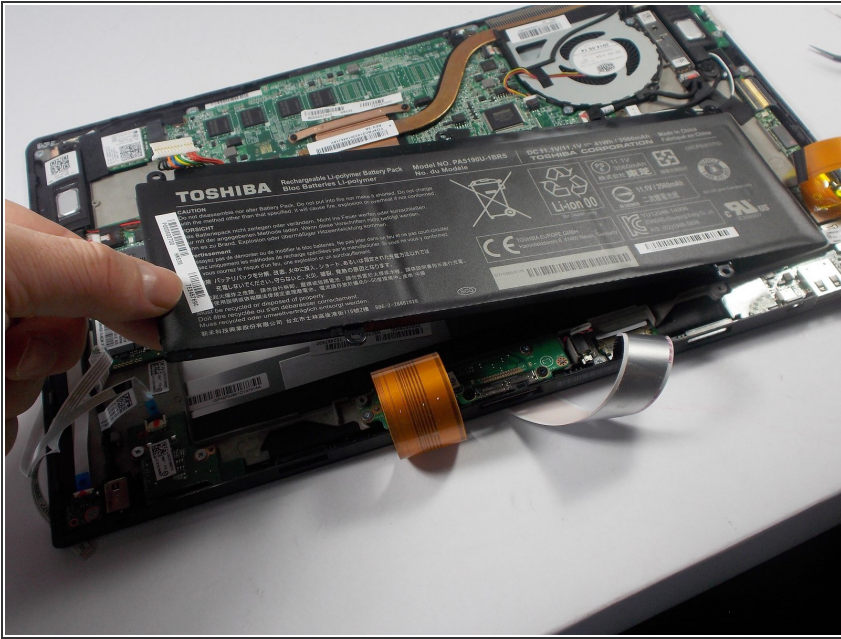
- Remove the LCD Display ribbon cable using a plastic opening tool.
- Remove the I/O ribbon cable using a plastic opening tool.
- ⓘ The ribbons may be stuck to the battery so make sure to peel them off gently to prevent damage.

Step 6



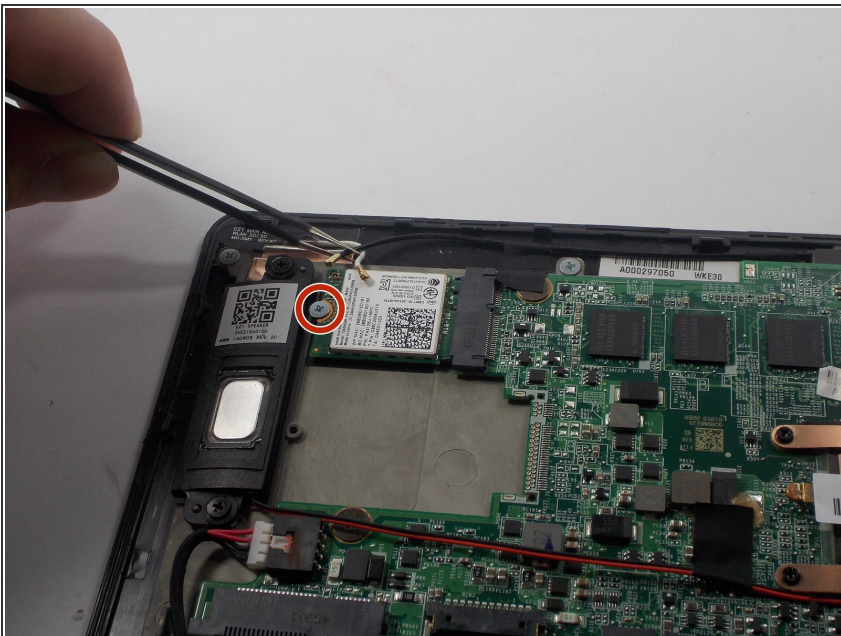
- Remove five 3.5mm Phillips J0 screws using a Phillips screw driver.

Step 7



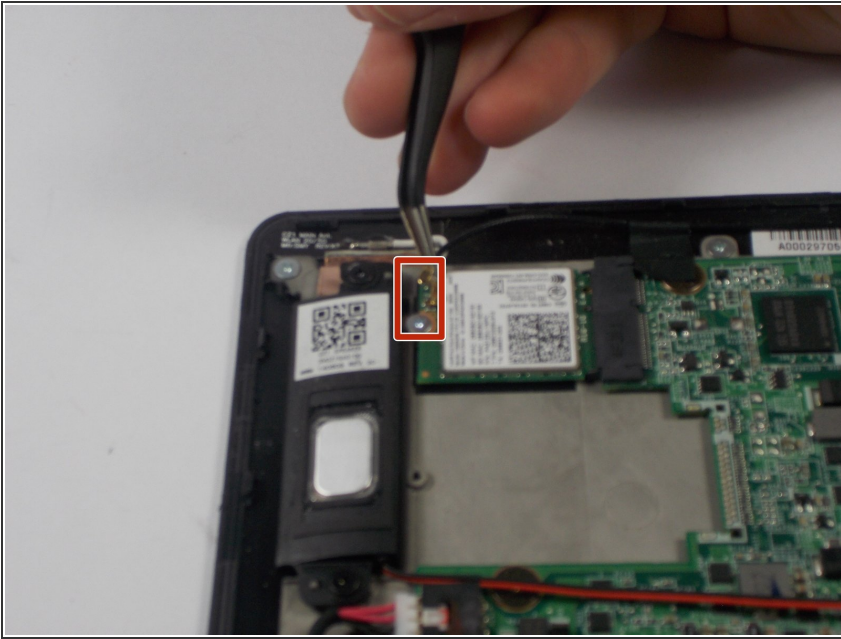
- Remove the battery from its holding position.

Step 8 — Wifi Card



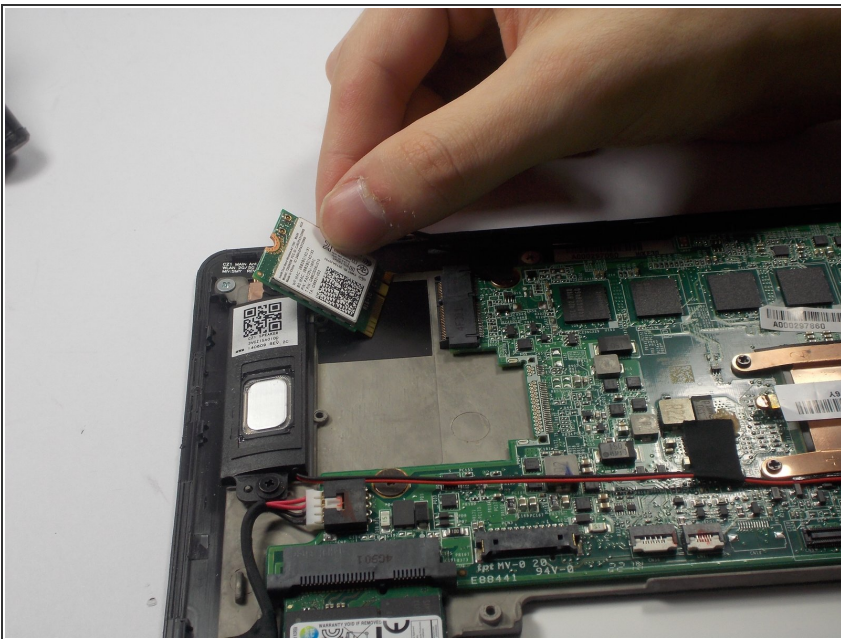
- Remove the 3mm screw J0 Phillips screw with the Phillips screw driver.

Step 9



- Remove the black and white cables attached using ESD safe tweezers.

Step 10



- Remove wifi card.

To reassemble your device, follow these instructions in reverse order.