



# Toshiba Satellite Click Tablet Battery Replacement

This guide will help you replace the battery in the tablet portion of the Toshiba Satellite Click.

Written By: Anthony



## INTRODUCTION

The tablet battery is located inside the tablet itself and will require a Phillips head screwdriver, prying tool, and tweezers. Also, there are a few wires and screws that need to be removed that require patience and a steady hand.



### TOOLS:

- [Phillips #0 Screwdriver](#) (1)
- [Tweezers](#) (1)
- [iFixit Opening Tools](#) (1)



### PARTS:

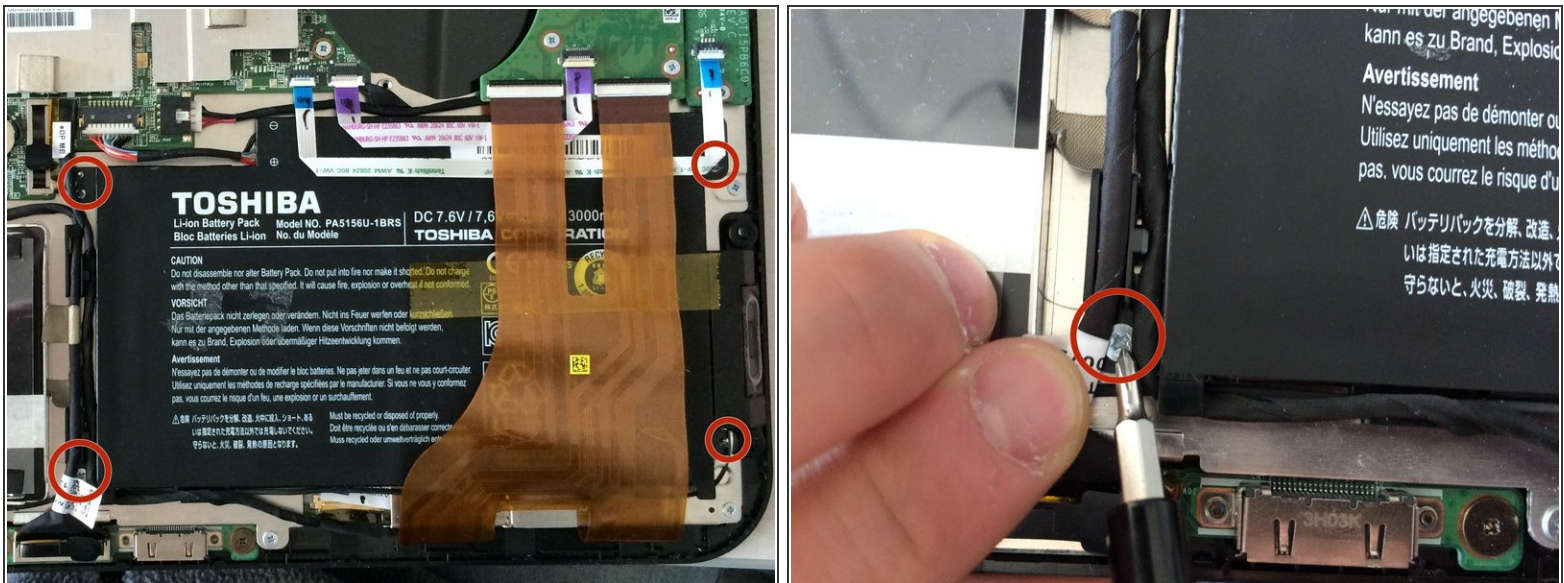
- [Lithium Ion battery pack model no. PA5156U-1BRS](#) (1)

## Step 1 — Tablet Battery



- Take the pry tool and pry open the backing of the tablet around all four sides and pull off back.

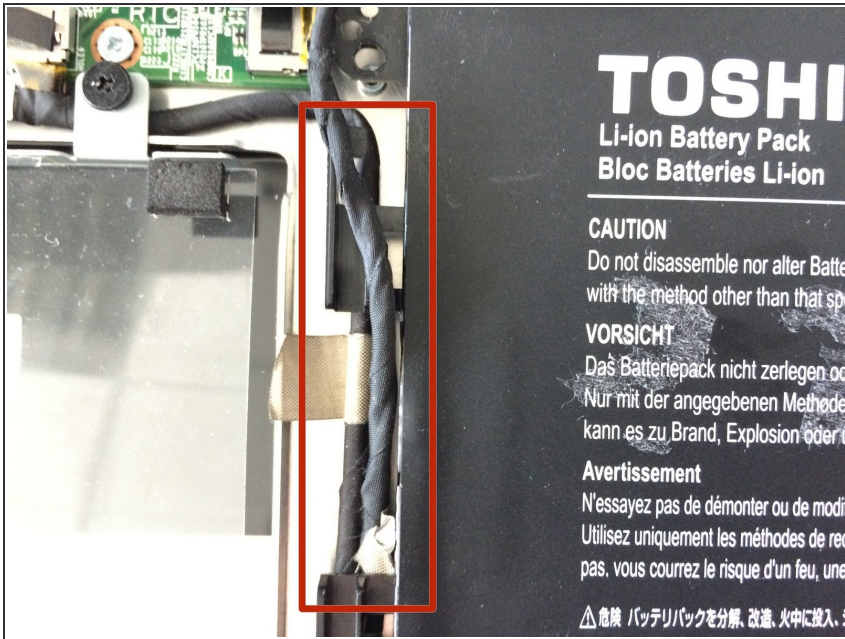
## Step 2



- Use a Phillips #0 Screwdriver to remove four screws in the corners of the battery pack.

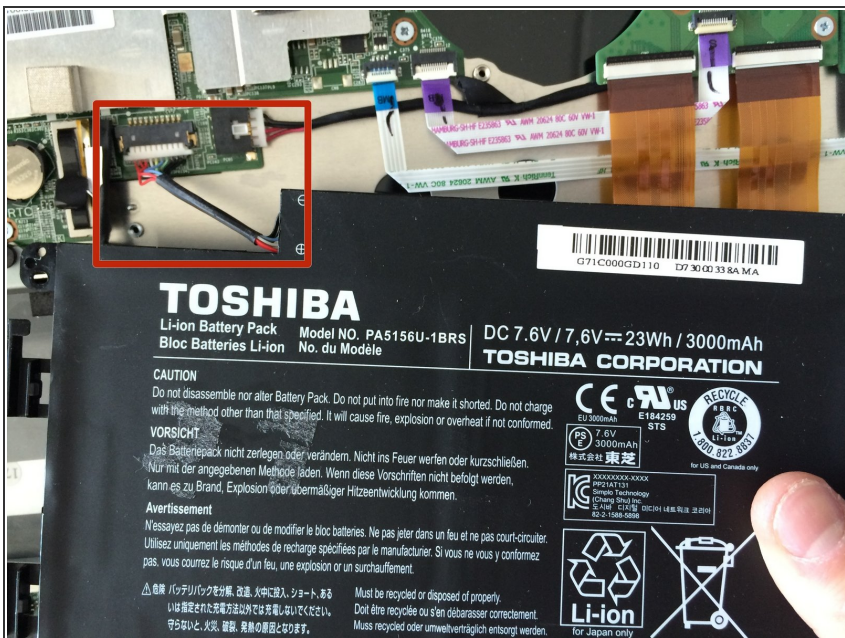


## Step 3



- Remove shown wires from clips on the left hand side of the battery before pulling the battery completely out.

## Step 4



- Remove highlighted plug out of the circuit board before completely removing the battery pack.

To reassemble your device, follow these instructions in reverse order.