



# Toshiba Satellite E45-B4100 Hard Drive Replacement

A replacement guide for the Hard Drive. You will need a replacement hard drive. This will allow the computer to run faster and help with deleting corrupted data. It also increases drive space and is necessary for laptop longevity.

Written By: Delaney

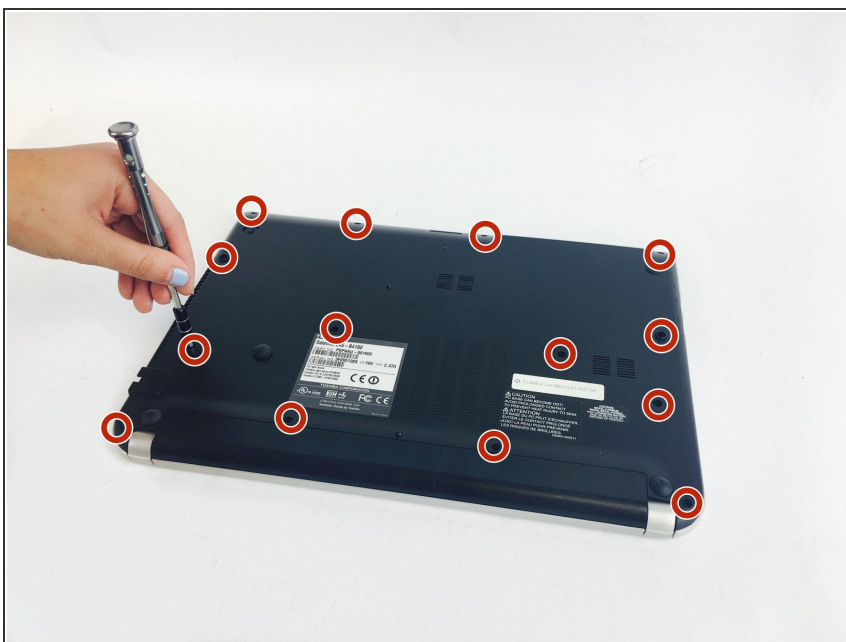




## TOOLS:

- [Spudger](#) (1)
- [Phillips #0 Screwdriver](#) (1)
- [Metal Spudger](#) (1)

## Step 1 — Battery Replacement



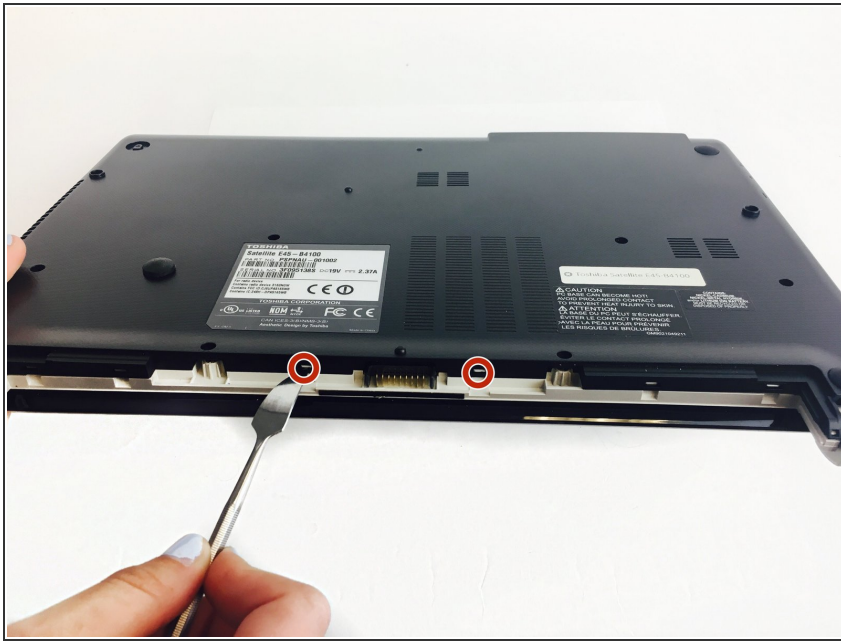
- Remove the fourteen 3.75mm screws with a Phillips #0 Screwdriver as shown.

## Step 2



- Gently pull out the battery.

## Step 3 — Hard Drive



- Using a spudger, poke the white tabs in by the battery until you hear a click.

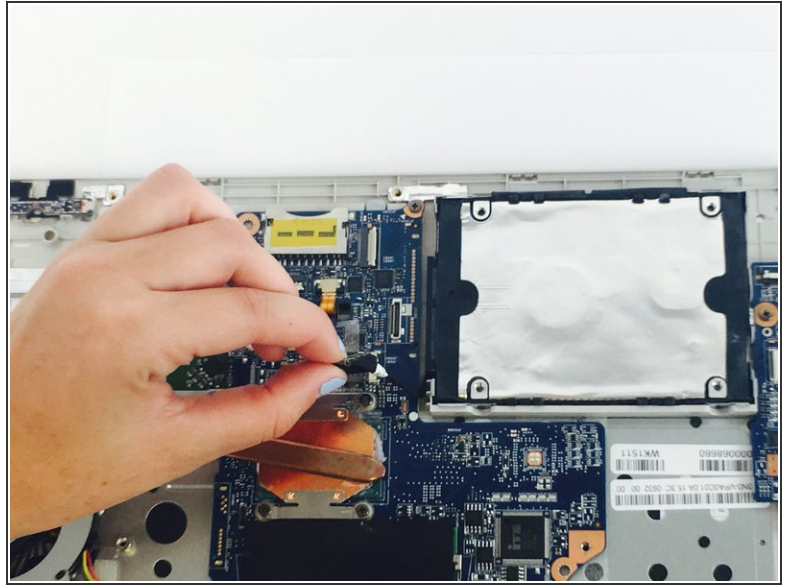
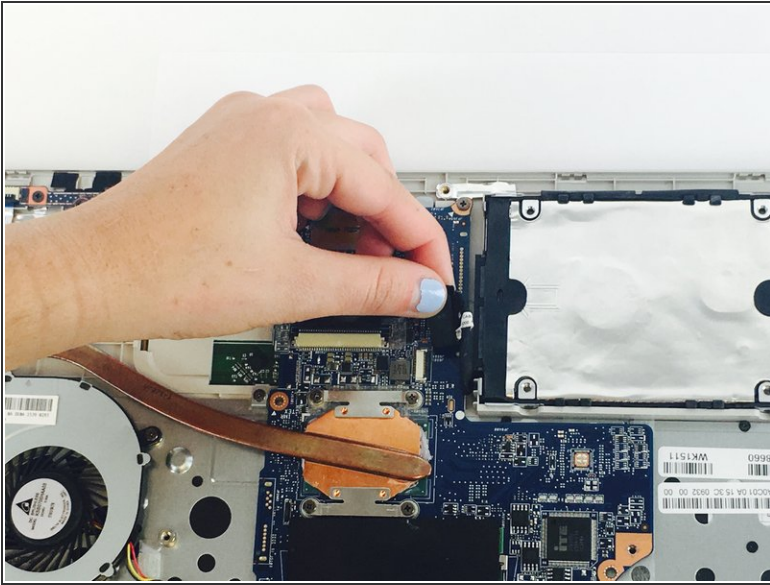
## Step 4



- Using a spudger, poke the white tabs in by the battery until you hear a click.

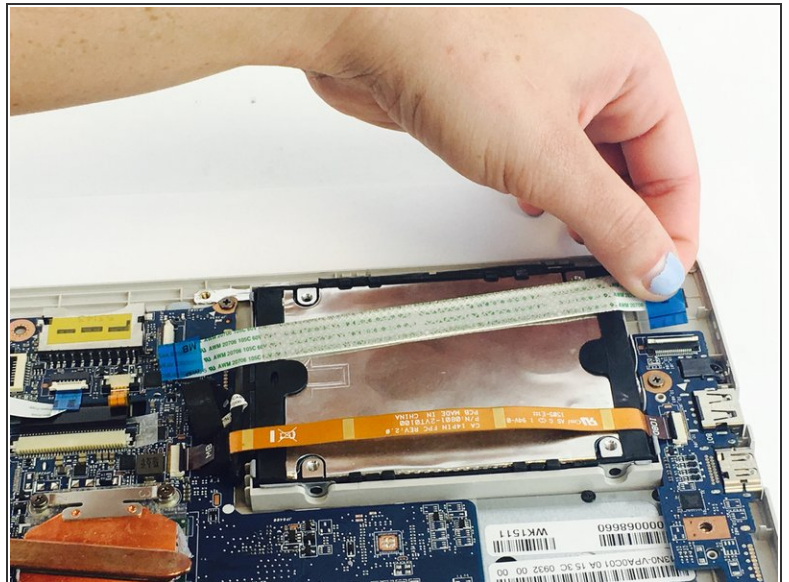
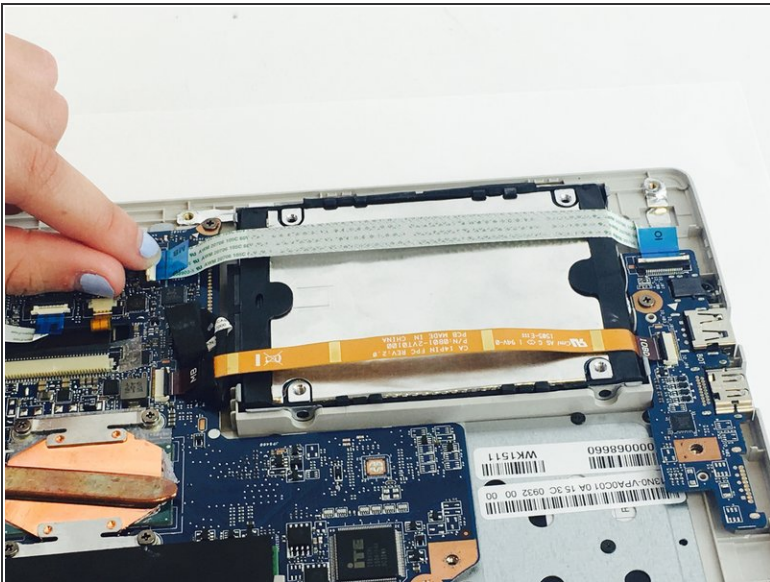
⚠ Be sure to use ESD-safe tools, we recommend using the [iFixit Pro Tech Toolkit](#)

## Step 5



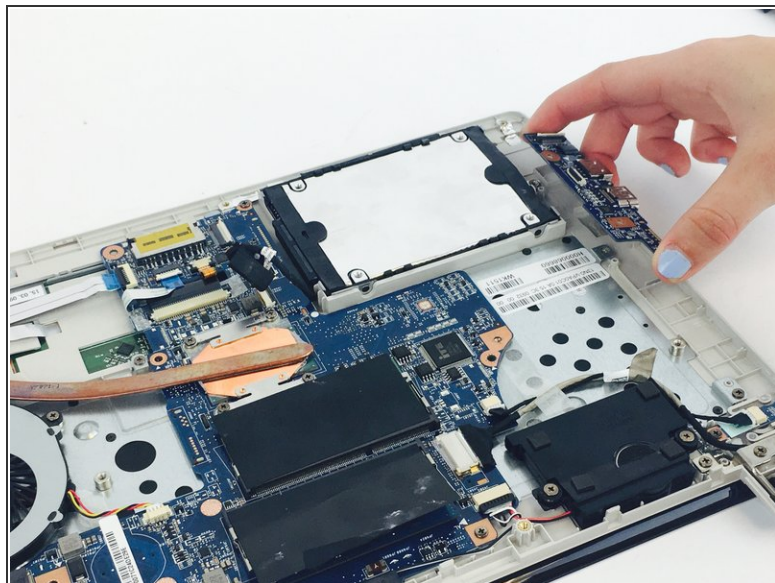
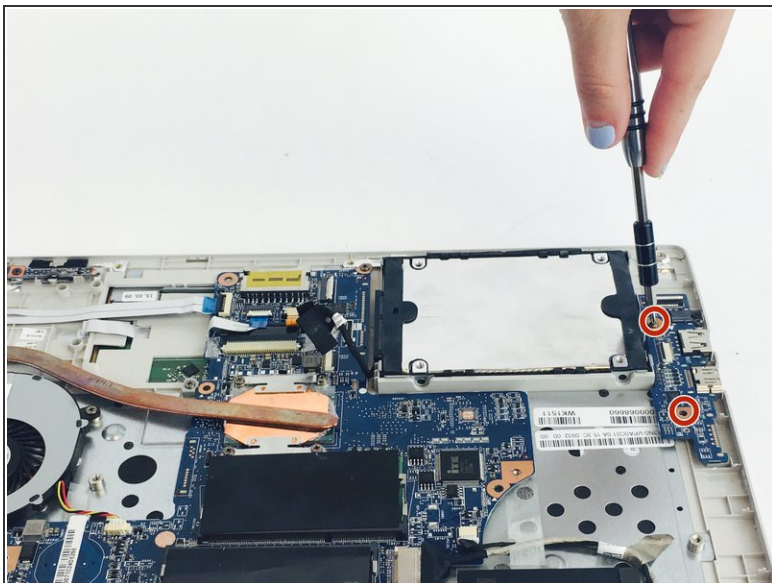
- Unplug the Hard Drive from the Motherboard.

## Step 6



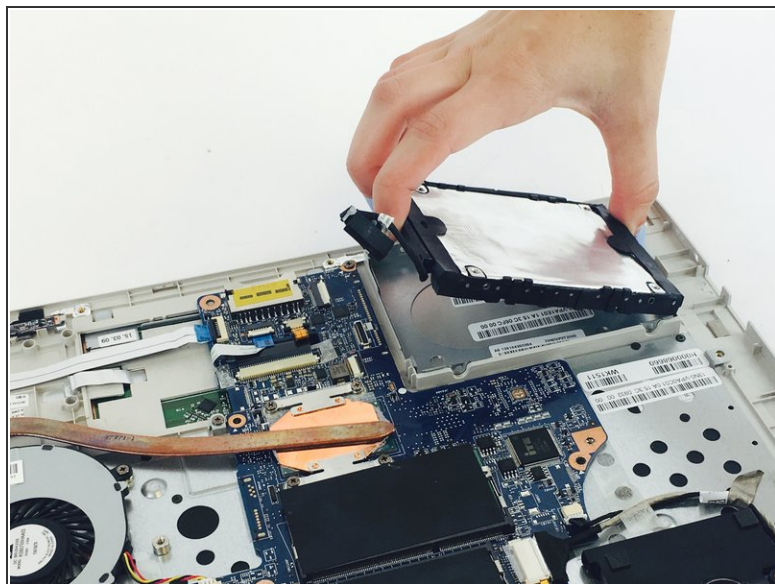
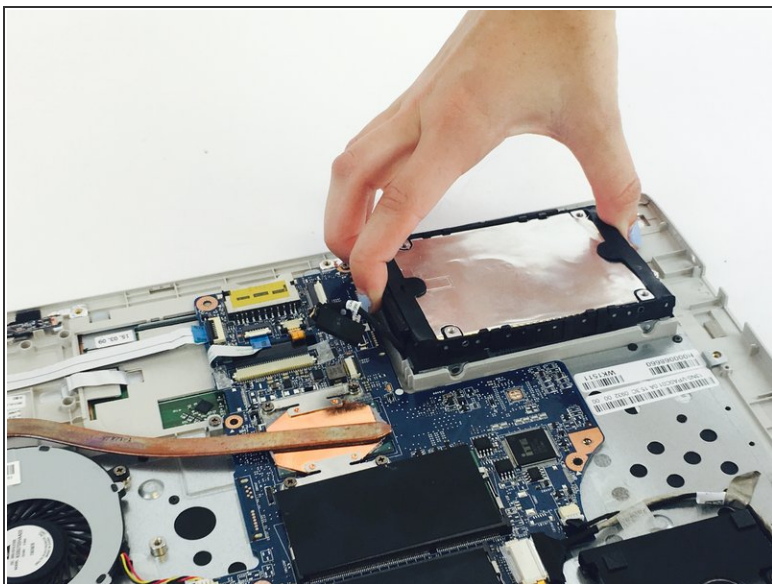
- Unplug both ribbons by flipping back the white tabs on either end of the ribbons and gently pulling the ribbons out.

## Step 7



- Using the 0 Phillips Head, unscrew the two 3.75mm screws connecting the USB Port Circuit Board to the hard drive.
- Remove the USB Port Circuit Board.

## Step 8



- Gently remove the hard drive.

To reassemble your device, follow these instructions in reverse order.