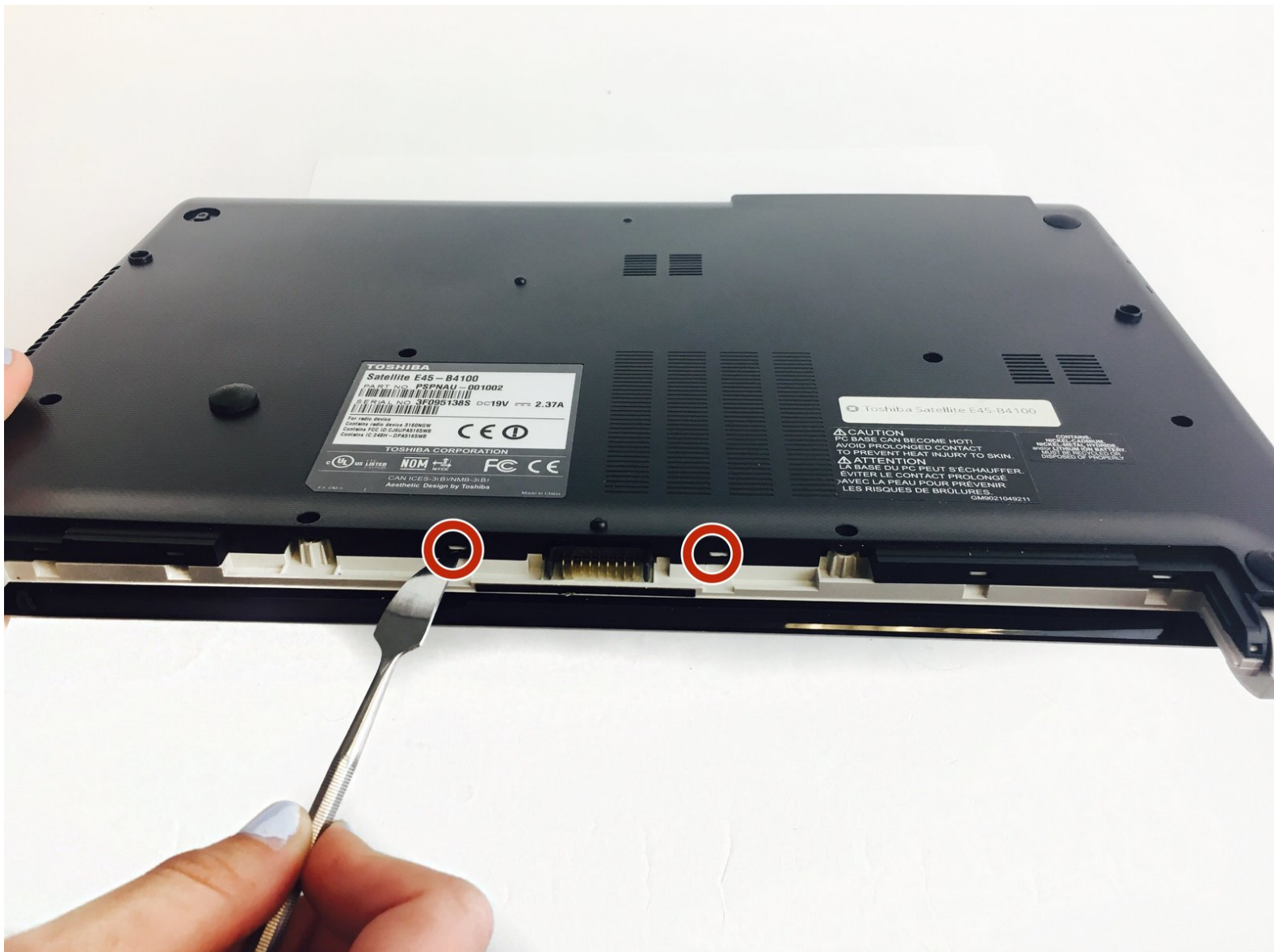




# Toshiba Satellite E45-B4100 RAM Replacement

Instructional guide on how to manually replace the RAM for the Toshiba Satellite E45-B4100. Be sure to have a RAM replacement on hand. Replacing RAM is useful for when wanting to upgrade the storage space on a computer.

Written By: Brendan Sweeney

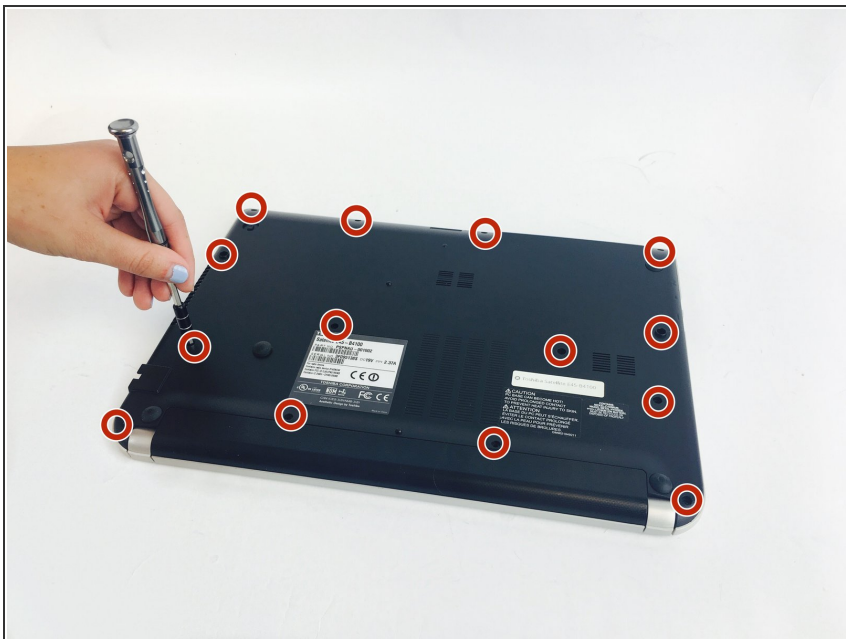




## TOOLS:

- [Spudger](#) (1)
  - [Phillips #0 Screwdriver](#) (1)
  - [Metal Spudger](#) (1)
-

## Step 1 — Battery Replacement



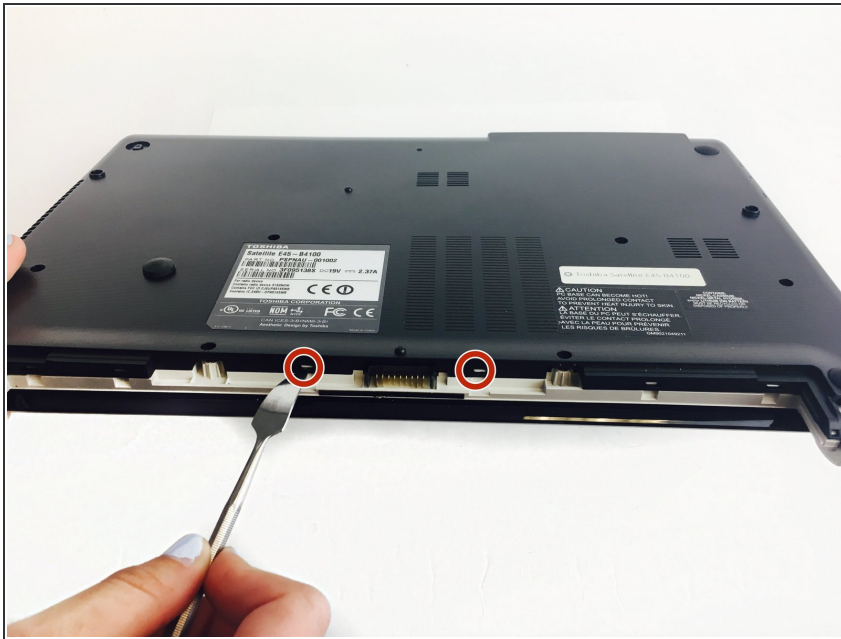
- Remove the fourteen 3.75mm screws with a Phillips #0 Screwdriver as shown.

## Step 2



- Gently pull out the battery.

## Step 3 — RAM



- Using a spudger, poke the white tabs in by the battery until you hear a click.

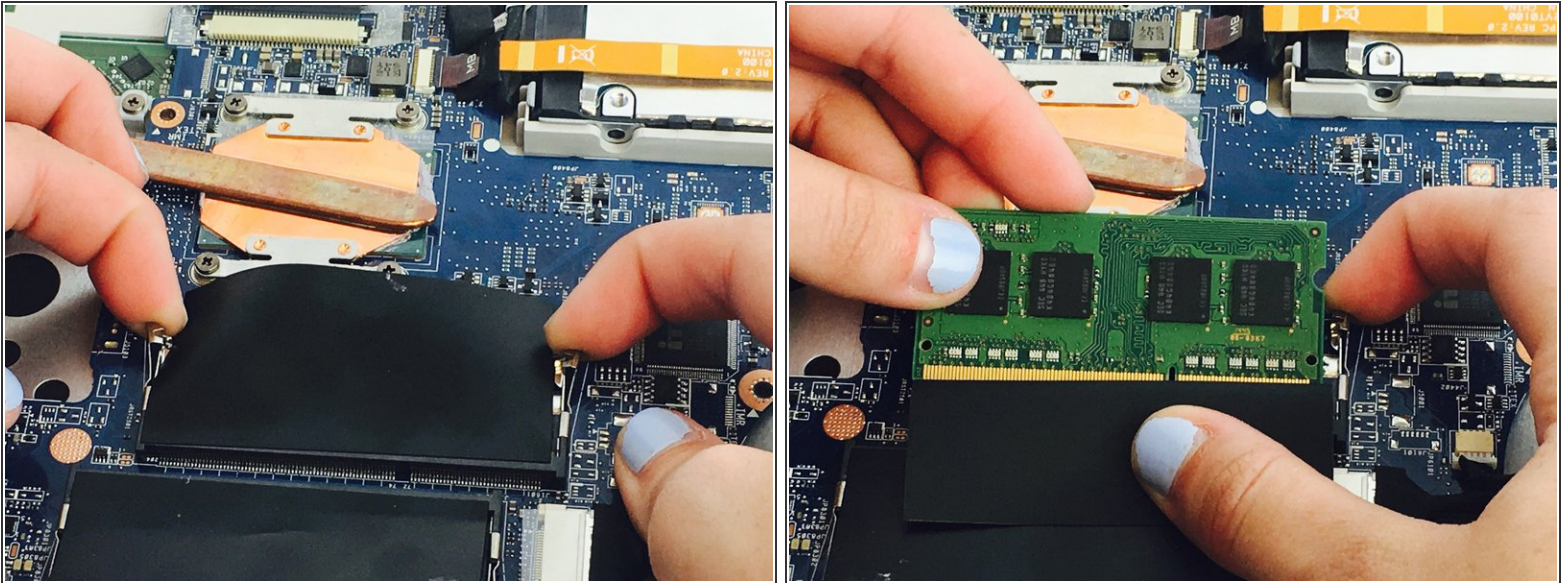
## Step 4



- Separate the laptop by sliding a spudger in between the black and silver covers.

⚠ Be sure to use ESD-safe tools, we recommend iFixit Toolkit.

## Step 5



- Pull the two metal brackets out away from RAM unit while simultaneously sliding the RAM unit out.

To reassemble your device, follow these instructions in reverse order.