



# Toshiba Satellite E45t-B4204 Back Case Replacement

This prerequisite guide will show you how to access the internal components of your Toshiba Satellite E45t-B4204.

Written By: Austin Blakely



This document was generated on 2020-01-06 08:19:57 PM (MST).

---

## INTRODUCTION

This prerequisite guide will show you how to access the internal components of your Toshiba Satellite E45t-B4204. This will be useful for any repairs beyond the battery, including the motherboard, fan, keyboard, trackpad, speakers, storage, and RAM.

---

### TOOLS:

- [Phillips #1 Screwdriver](#) (1)
  - [Spudger](#) (1)
-

## Step 1 — Back Case



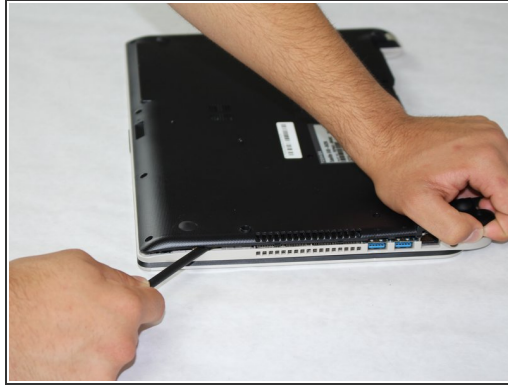
- Remove all 14 of the 4 mm screws on the back side of the laptop with a Phillips #1 screwdriver.

## Step 2



- Gently pull out the battery.

## Step 3



- Lift up in the spaces left by the battery to create a gap between the back case and the laptop body.
- Run a spudger along both sides of the laptop to widen the separation and release the clips holding the back case on.
- Remove the back case.

To reassemble your device, follow these instructions in reverse order.