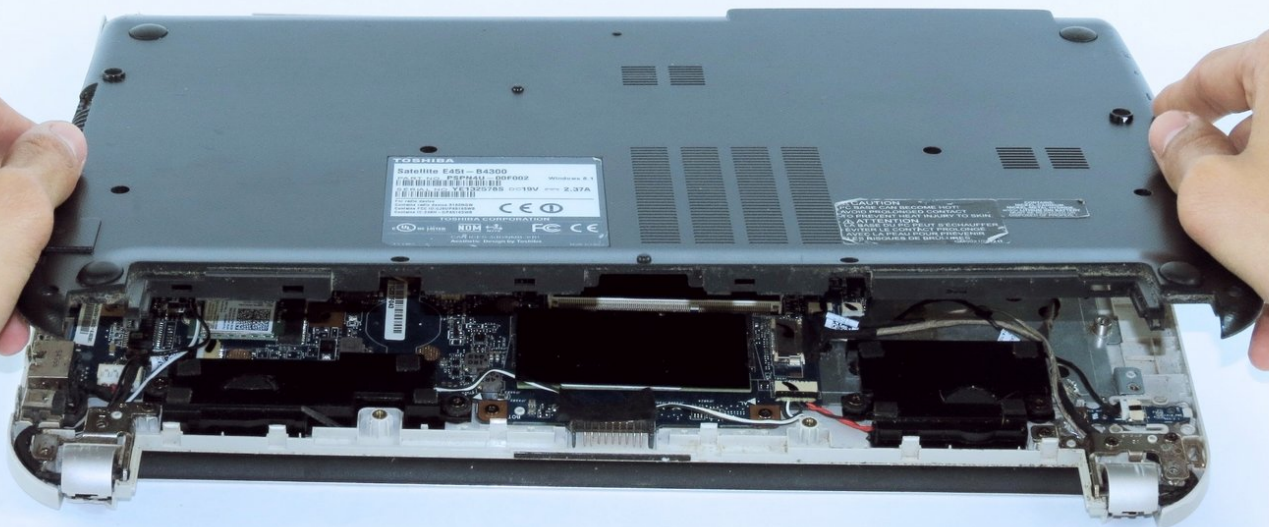




# Toshiba Satellite E45t-B4300 Bottom Case Replacement

This guide will show you how to replace the bottom case of your Toshiba E45t-B4300.

Written By: Joshua Swanson



---

## INTRODUCTION

Use this guide to replace a damaged bottom case on a Toshiba Satellite E45t-B4300.



### TOOLS:

- [Phillips #0 Screwdriver](#) (1)
  - [Spudger](#) (1)
-

## Step 1 — Battery



⚠ Power off your laptop before continuing.

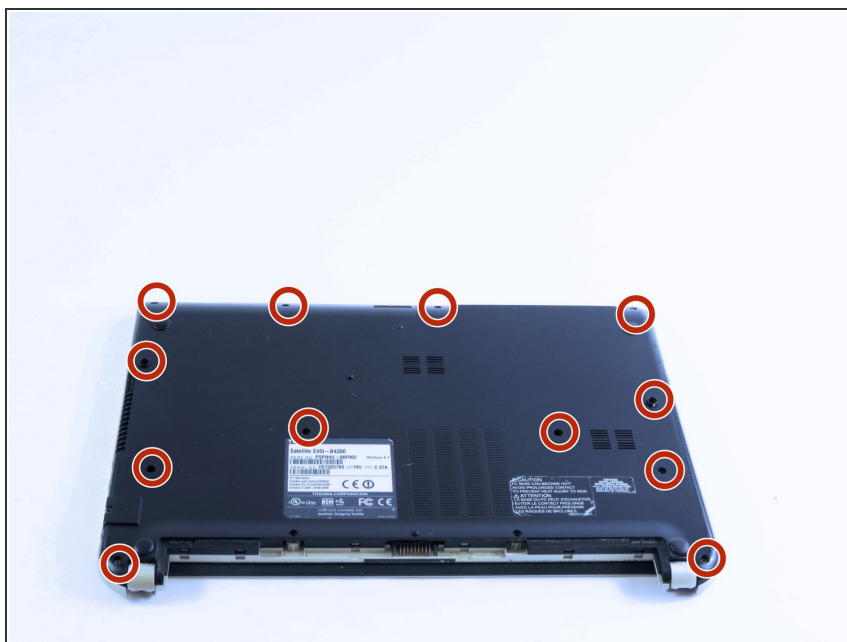
- Remove the following two 4mm screws with a Phillips #0 screwdriver.

## Step 2



- Slide the battery out towards you.

## Step 3 — Bottom Case



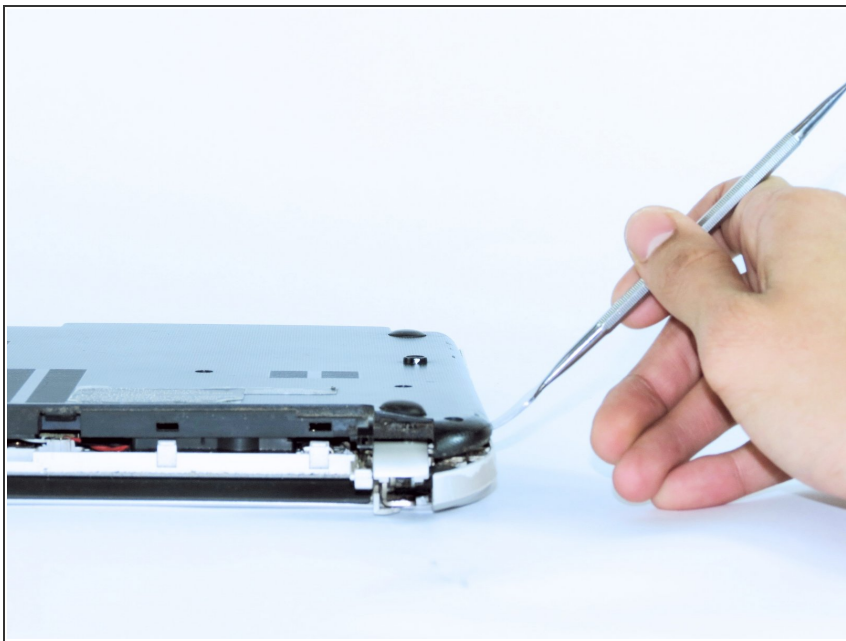
- Remove the following twelve 4mm screws with a Phillips #0 screwdriver.

## Step 4



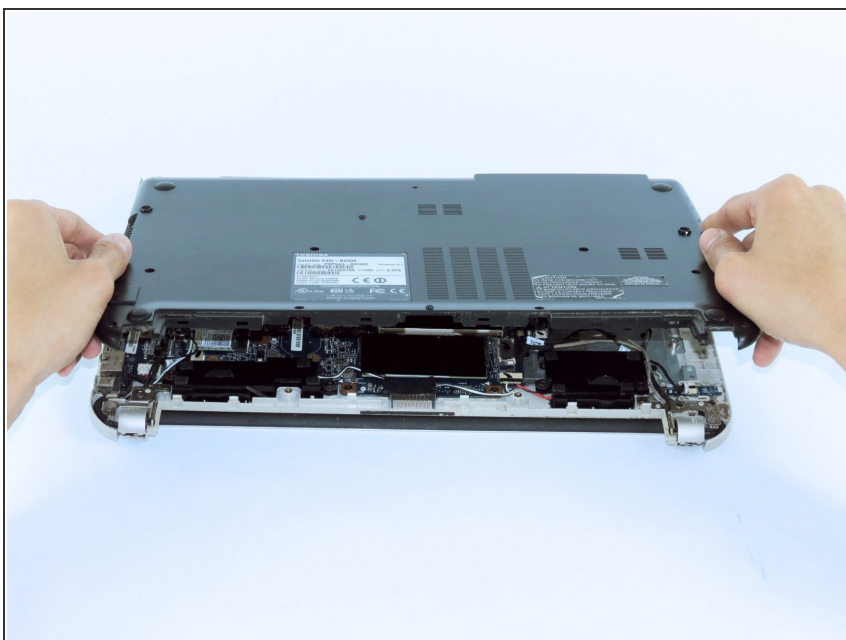
- Use a spudger to depress the six white clips connecting the plastic cover

## Step 5



- Run the spudger or a plastic card around the entire laptop to release the rest of the clips.

## Step 6



- Remove the cover and set to the side.

To reassemble your device, follow these instructions in reverse order.