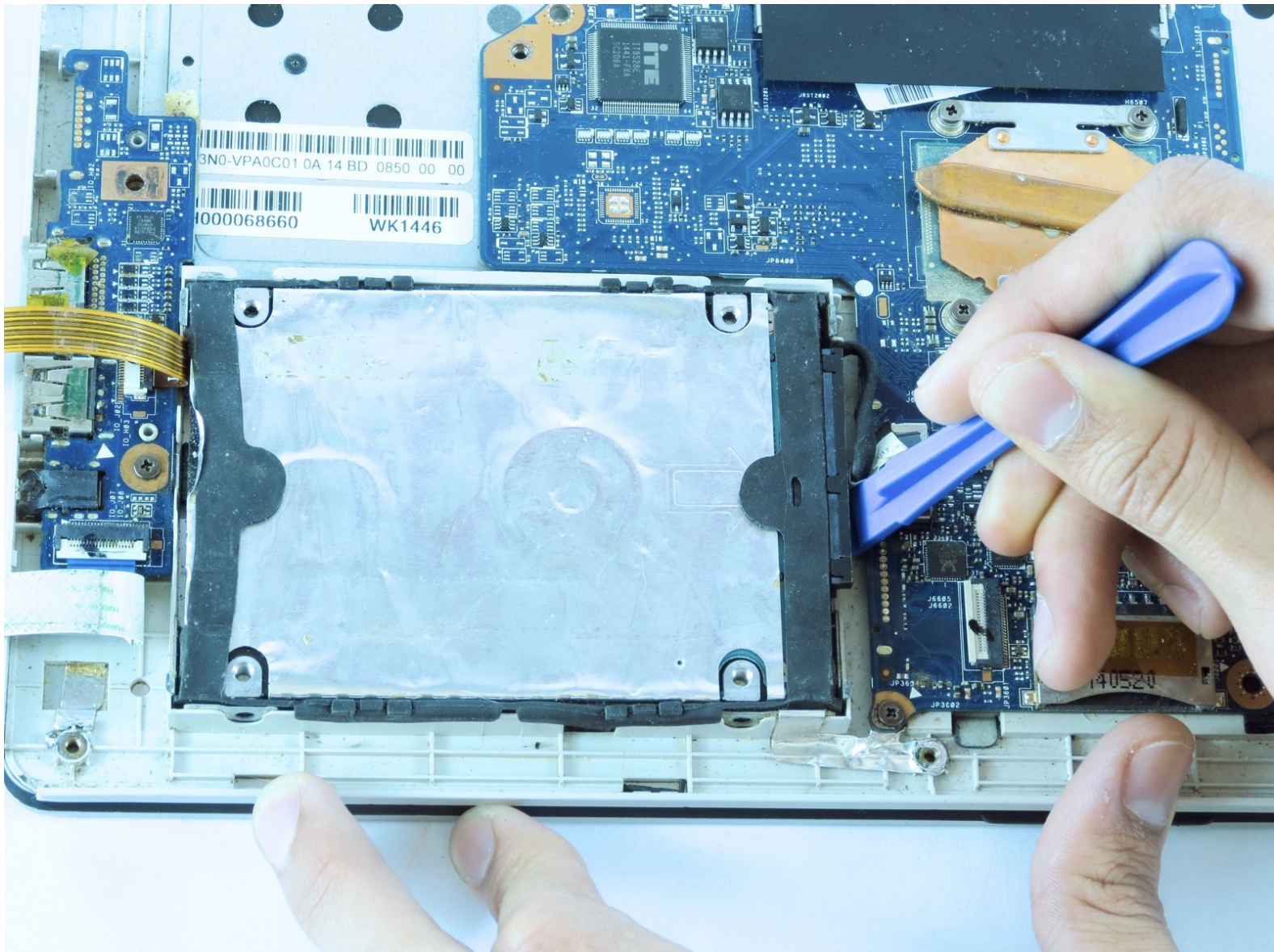




# Toshiba Satellite E45t-B4300 Hard Drive Replacement

This guide will show you how to replace the hard drive in your Toshiba E45t-B4300.

Written By: Joshua Swanson



# INTRODUCTION

Use this guide to replace the hard drive in a Toshiba Satellite E45t-B4300.



## TOOLS:

- [Phillips #0 Screwdriver](#) (1)
  - [Spudger](#) (1)
  - [iFixit Opening Tools](#) (1)
-

## Step 1 — Battery



⚠ Power off your laptop before continuing.

- Remove the following two 4mm screws with a Phillips #0 screwdriver.

## Step 2



- Slide the battery out towards you.



## Step 3 — Bottom Case



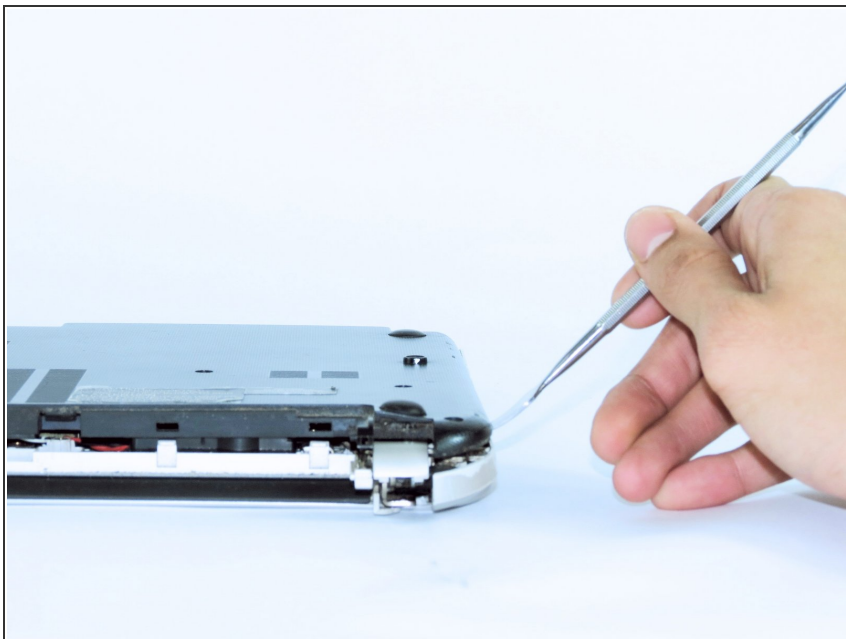
- Remove the following twelve 4mm screws with a Phillips #0 screwdriver.

## Step 4



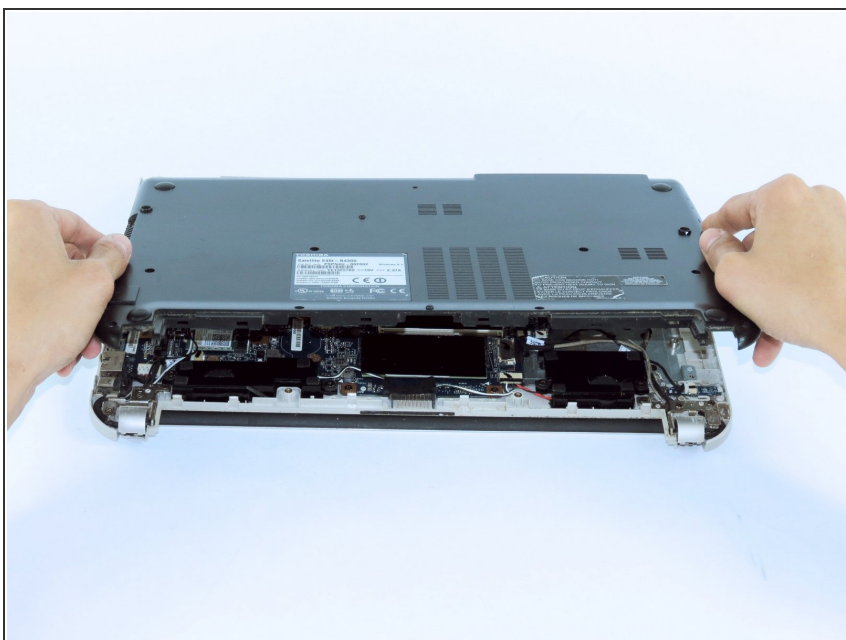
- Use a spudger to depress the six white clips connecting the plastic cover

## Step 5



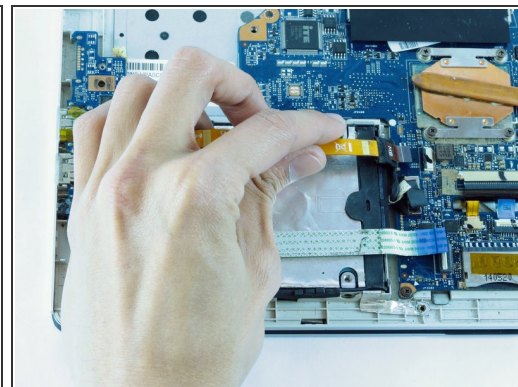
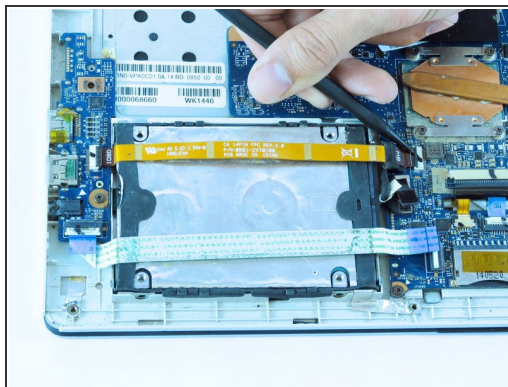
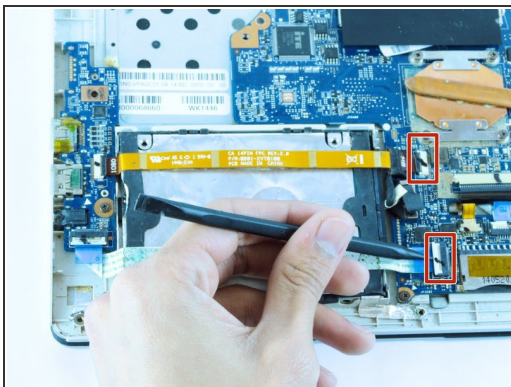
- Run the spudger or a plastic card around the entire laptop to release the rest of the clips.

## Step 6



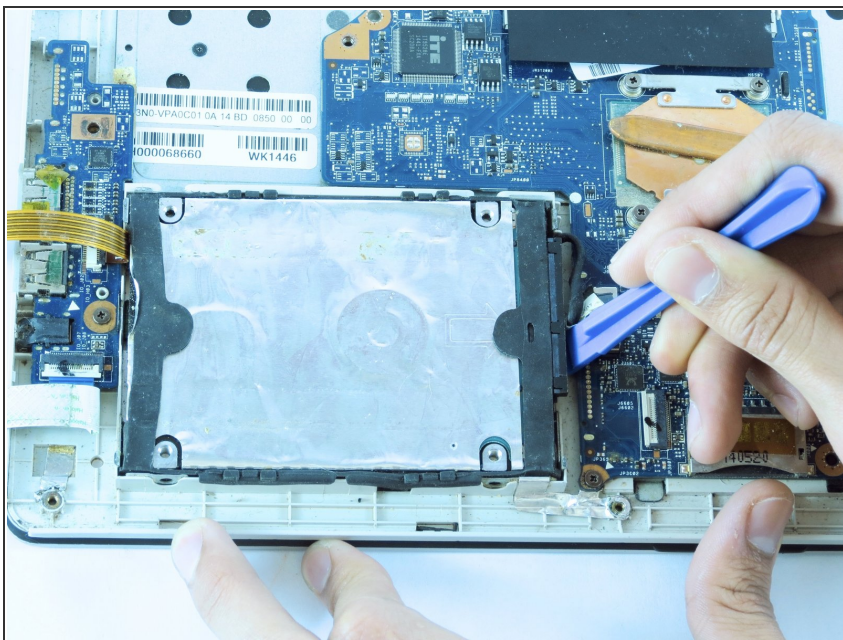
- Remove the cover and set to the side.

## Step 7 — Hard Drive



- Use the point end of the spudger to lift the the clips that attach the two ribbons to the motherboard.
- Pull out the ribbons from the motherboard.

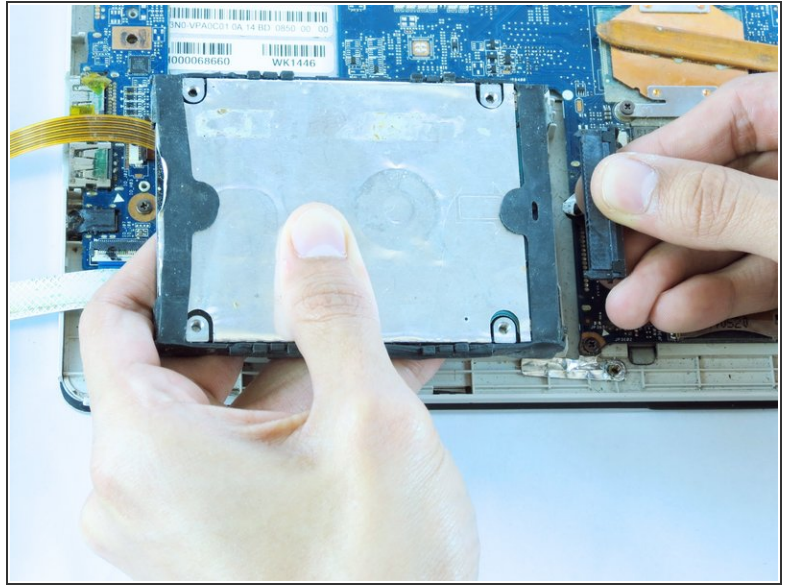
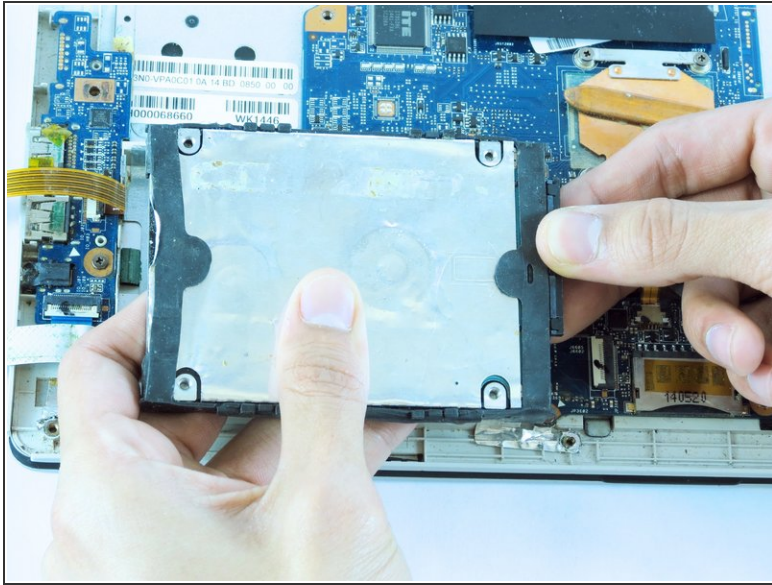
## Step 8



- Use an opening tool or your fingers to lift the hard drive out of the laptop.



## Step 9



- Unplug the hard drive from the motherboard.

To reassemble your device, follow these instructions in reverse order.