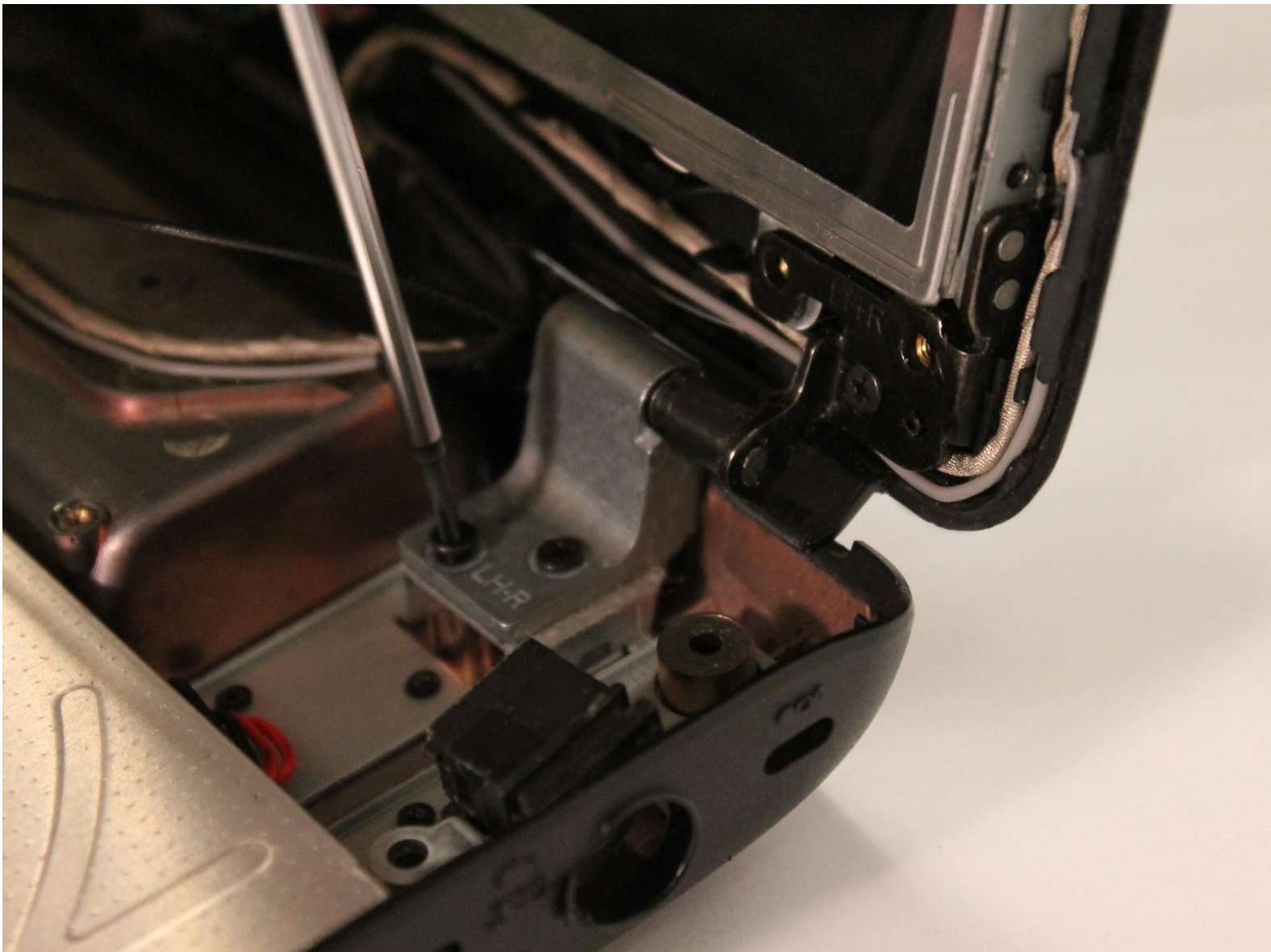




Toshiba Satellite L305-S5875 Hinge Replacement

This guide will show the step by step process of replacing a broken hinge on a Toshiba Satellite L305-S5875

Written By: Tyler

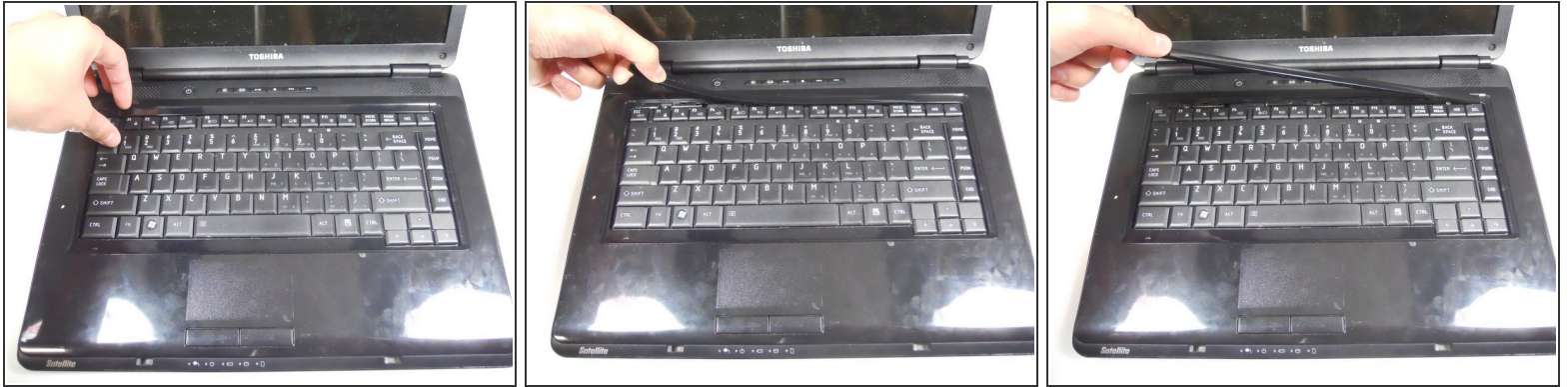




TOOLS:

- [Phillips #00 Screwdriver](#) (1)
-

Step 1 — Keyboard



- Open the laptop so the keyboard is facing you and locate the thin plastic cover located directly above the keyboard.
- Using your fingers, remove this long piece of plastic gently.

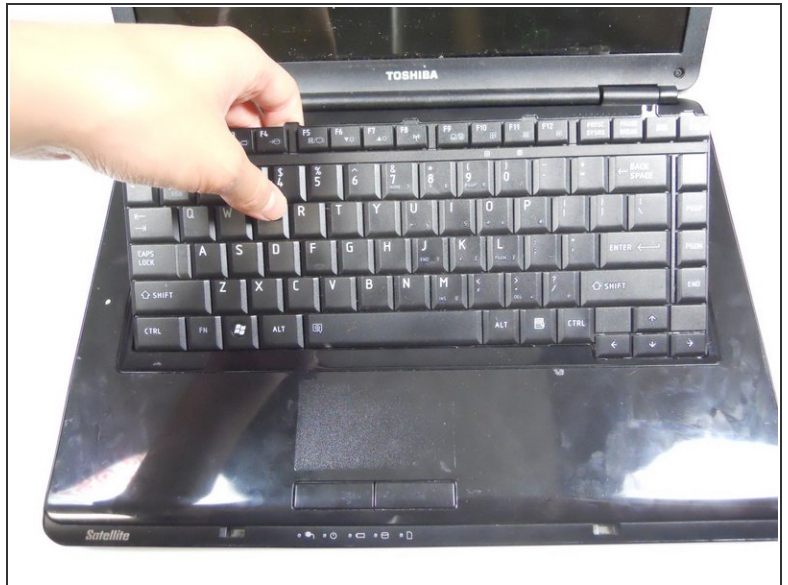
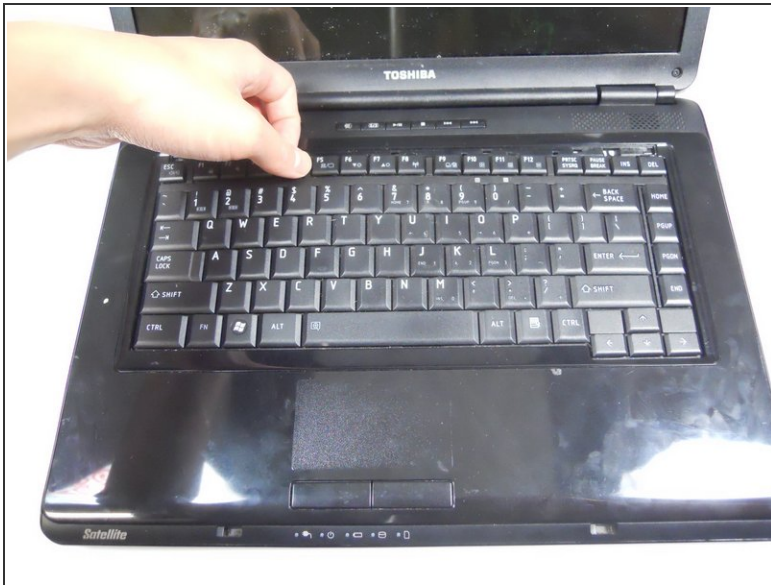
 **Do not apply too much force when removing the cover piece as it can break.**

Step 2



- Remove the two 4.8 mm type-0 Phillips head screws located underneath the plastic cover piece.

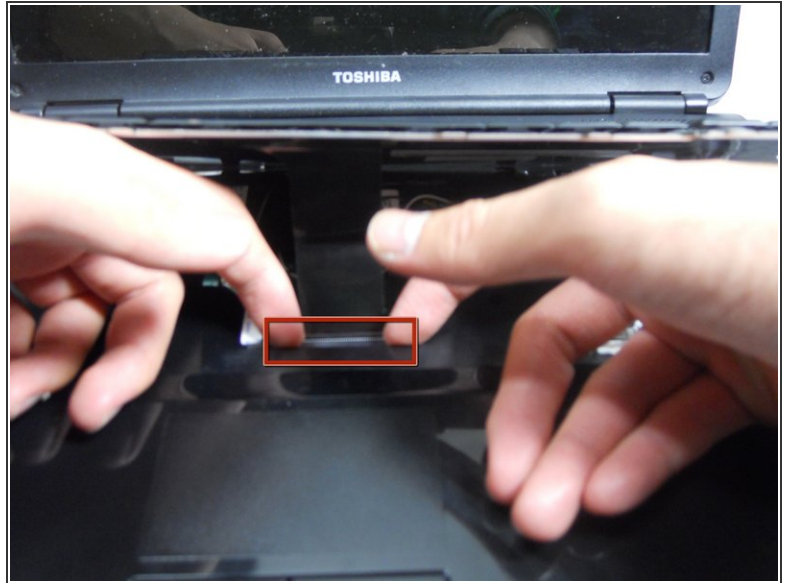
Step 3



- Starting at the top, gently raise the keyboard enough to remove it from the socket.

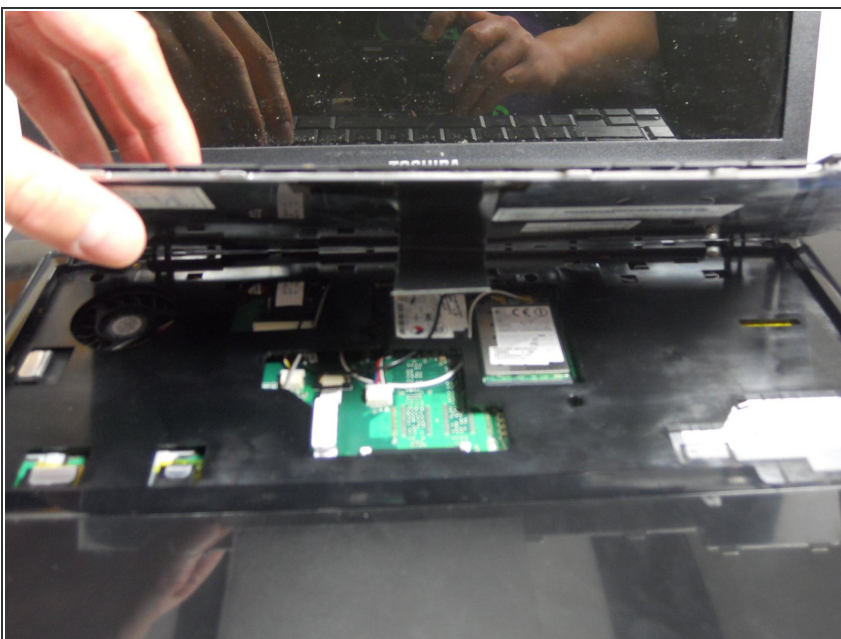
⚠ DO NOT pull out the keyboard after its out of its socket. The keyboard is connected to the hard drive through a data cable and removing forcefully could damage the cable and laptop.

Step 4



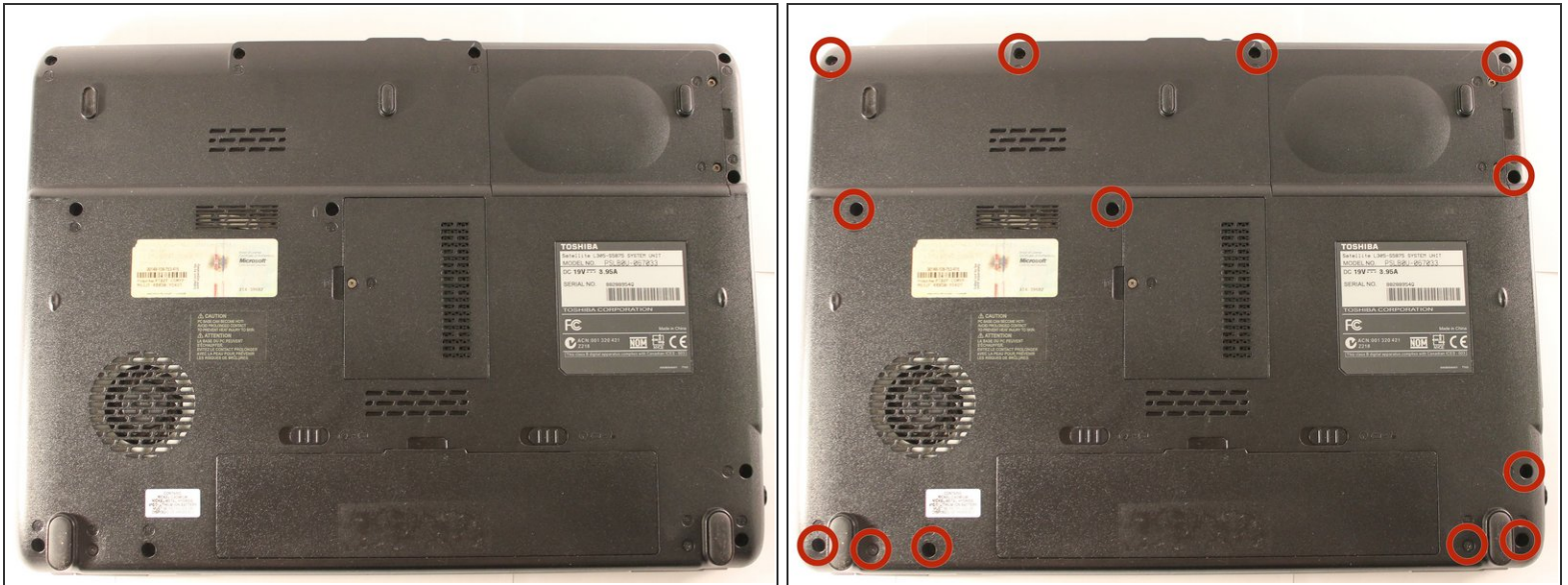
- Locate the data cable that is connected to the motherboard.
- Pull the white ZIF connector towards the screen to remove it.
- Pull the black ribbon cable away from the screen.

Step 5



- With the black ribbon cable now disconnected, remove the keyboard from its housing.

Step 6 — Hinge



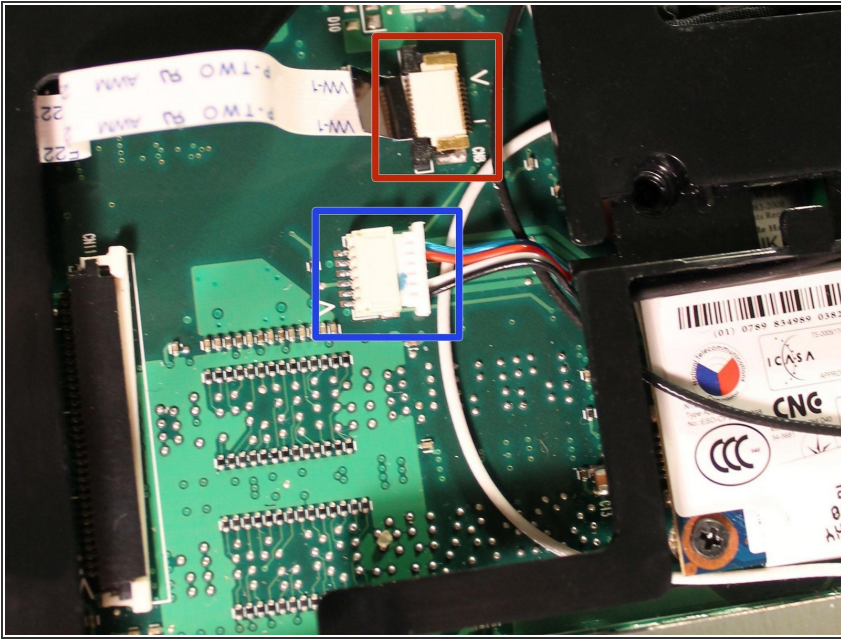
- Close your laptop and flip it over.
- Remove the 13 screws circled in image 2.

Step 7



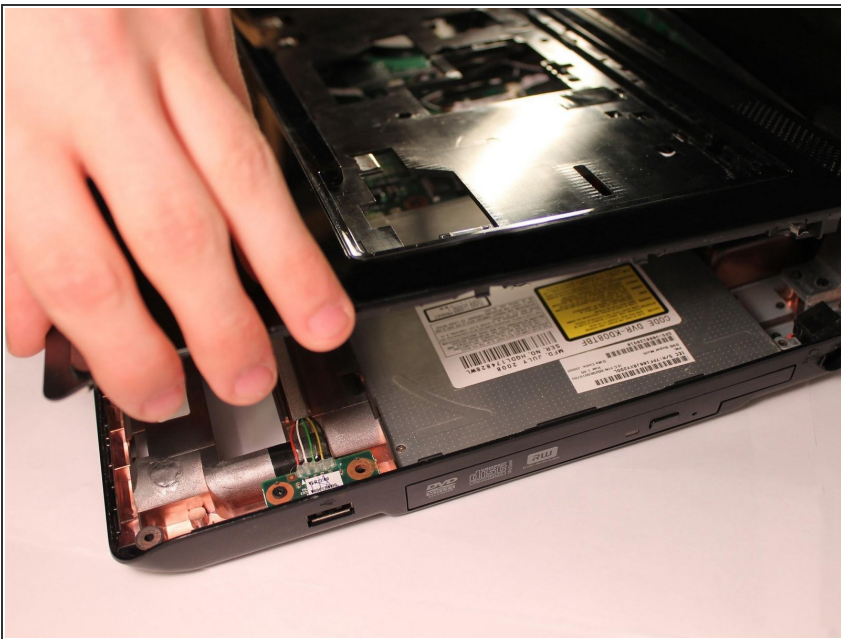
- Turn the laptop over and open the lid.
- Remove the keyboard(refer to [Toshiba Satellite L305-S5875 Keyboard Replacement](#) for steps on removing the keyboard)

Step 8



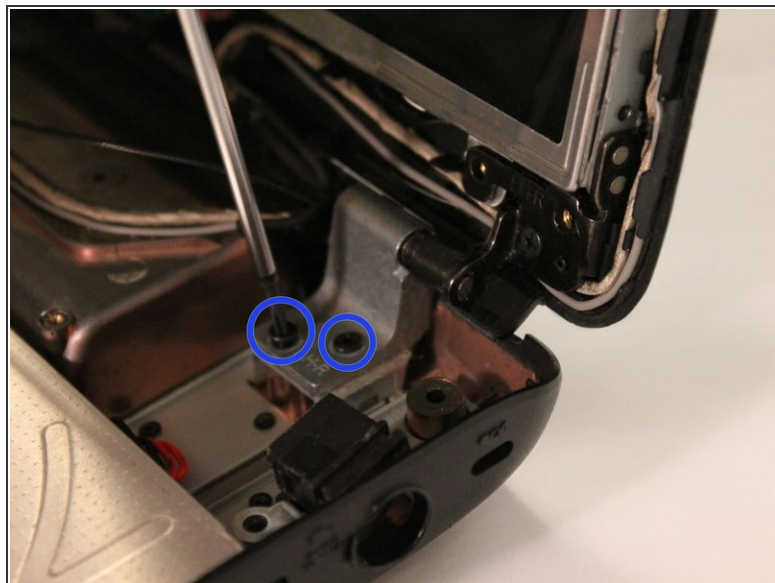
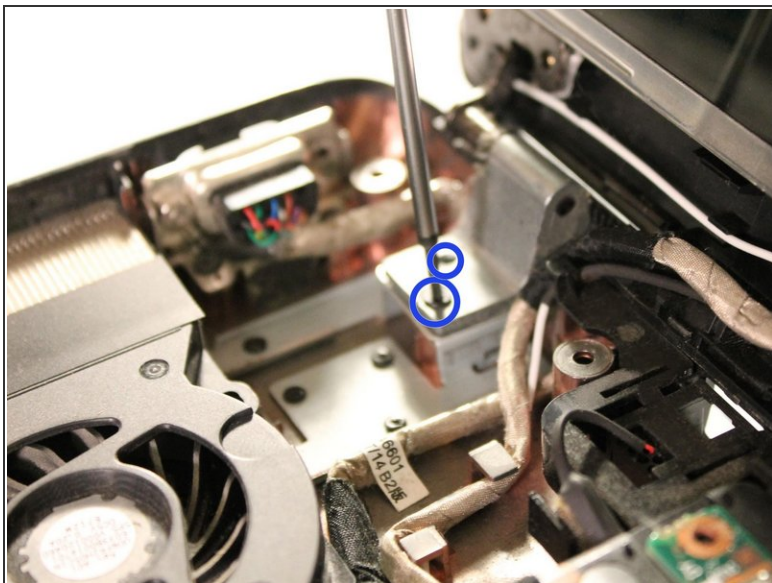
- Gently disconnect the ribbon cable.
- Gently disconnect the multicolored cable.

Step 9



- Gently pull the top case from the bottom case of the laptop.

Step 10



- Unscrew the two screws on the hinge. (Be careful to not damage nearby wires)
- ⓘ Both hinges shown, but replacing both may not be necessary.
- Congratulations, you may now remove and replace your hinge!
- Follow these steps in reverse order to reassemble your laptop.

To reassemble your device, follow these instructions in reverse order.