



Toshiba Satellite L305-S5875 Keyboard Replacement

This guide instructs how to take out and replace the keyboard.

Written By: Juan



INTRODUCTION

If your keyboard is damaged or not working properly, it is fairly easy to replace.



TOOLS:

- [Phillips #00 Screwdriver](#) (1)
-

Step 1 — Battery



- Close the laptop lid and flip the laptop over.
- Switch the lock button on the left to the unlock position. (The unlock position is to the left side.)

Step 2



- Push the release button to the right.
- Hold the release button to the right and lift the battery out of its housing.

Step 3 — Keyboard



- Open the laptop so the keyboard is facing you and locate the thin plastic cover located directly above the keyboard.
- Using your fingers, remove this long piece of plastic gently.

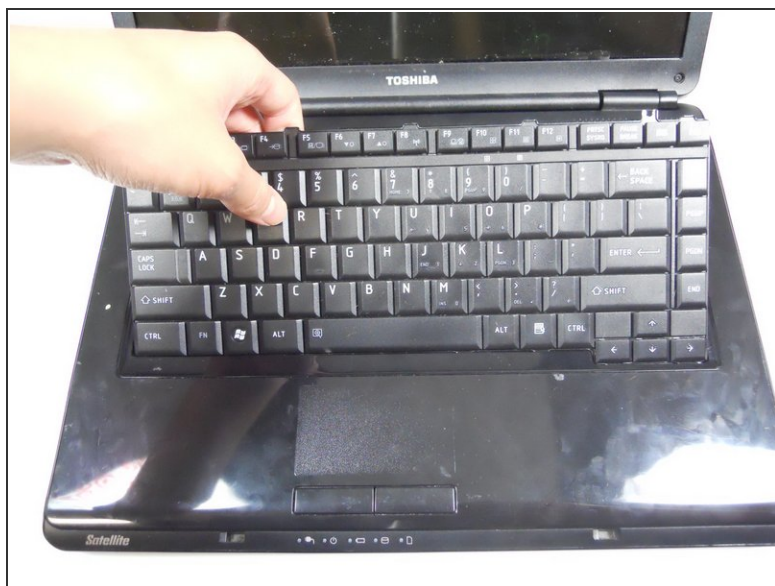
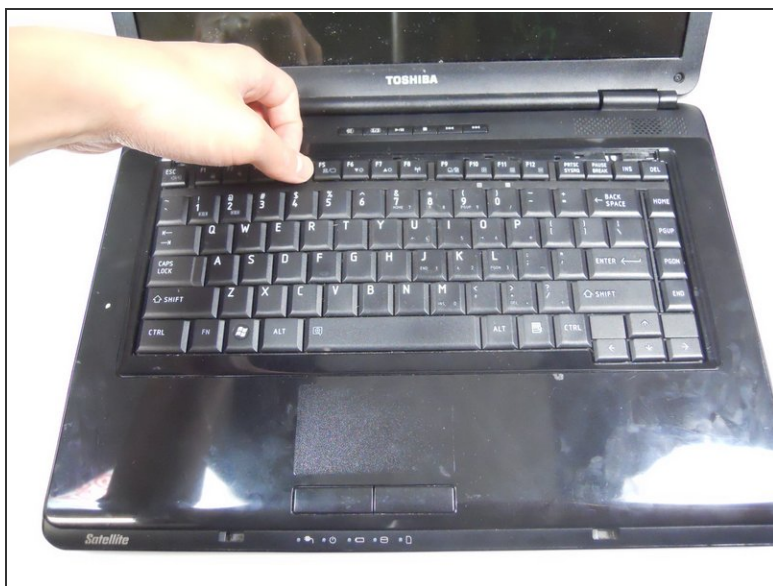
 **Do not apply too much force when removing the cover piece as it can break.**

Step 4



- Remove the two 4.8 mm type-0 Phillips head screws located underneath the plastic cover piece.

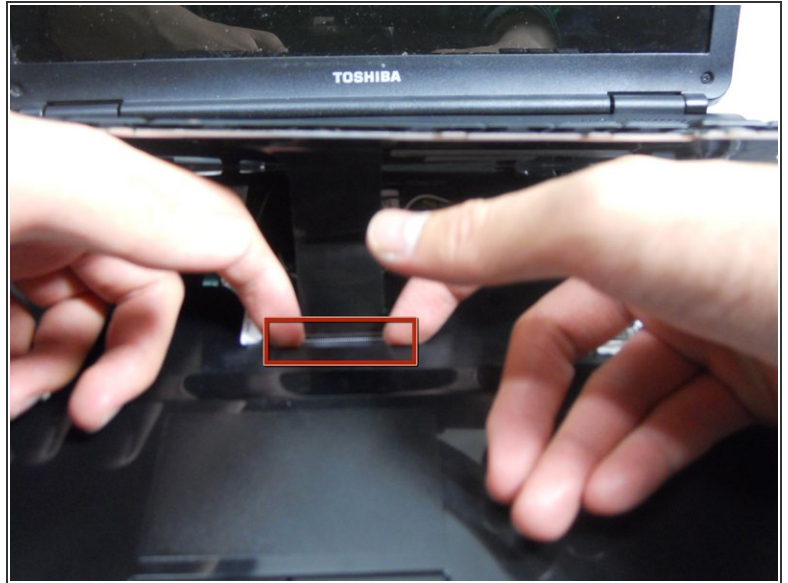
Step 5



- Starting at the top, gently raise the keyboard enough to remove it from the socket.

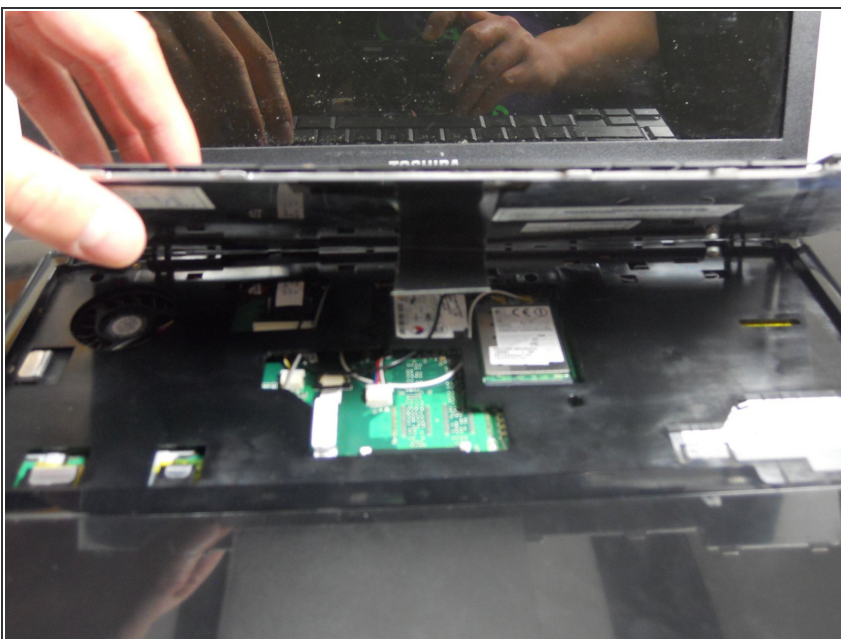
⚠ DO NOT pull out the keyboard after its out of its socket. The keyboard is connected to the hard drive through a data cable and removing forcefully could damage the cable and laptop.

Step 6



- Locate the data cable that is connected to the motherboard.
- Pull the white ZIF connector towards the screen to remove it.
- Pull the black ribbon cable away from the screen.

Step 7



- With the black ribbon cable now disconnected, remove the keyboard from its housing.

Congratulations, you have removed the laptops original keyboard and can now replace it with a new one.

To reassemble your device, follow these instructions in reverse order with the new keyboard.