



# Toshiba Satellite L305-S5946 Hard Drive Replacement

Remove the hard drive from your Toshiba Satellite L305-S5946.

Written By: Alec



## INTRODUCTION

Use this guide to replace or upgrade the hard drive in your Toshiba Satellite L305-S5946. If your hard drive is faulty or you want more storage, you should replace the hard drive.



### TOOLS:

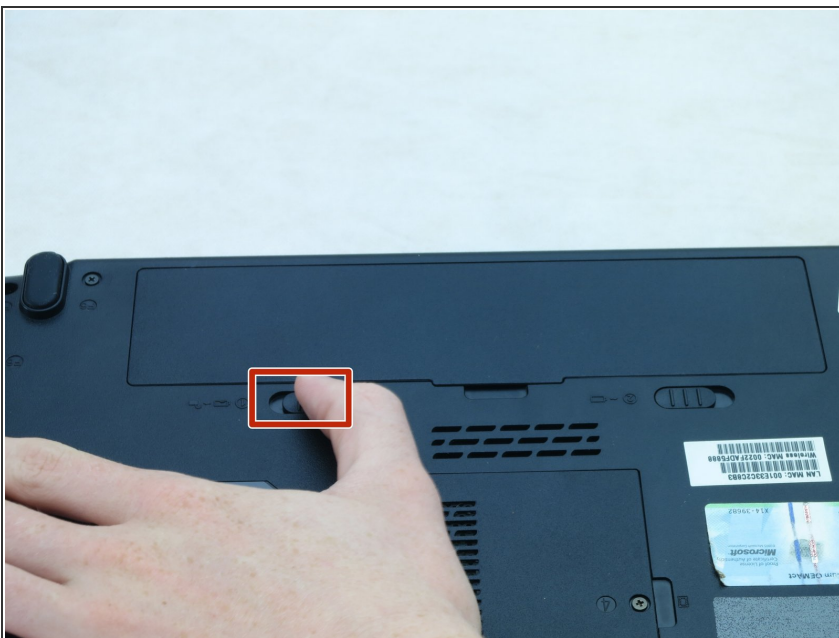
- [Phillips #1 Screwdriver](#) (1)
  - [iFixit Opening Tools](#) (1)
-

## Step 1 — Battery



- Turn the laptop upside-down.
- Position the laptop so that the display hinges are facing away from you.

## Step 2



- Slide the left battery bay latch to the left.

## Step 3



- Slide the right battery bay latch to the right and hold.
- While holding onto the latch, use a plastic opening tool to lift and remove the battery bay cover.
- Remove the battery.

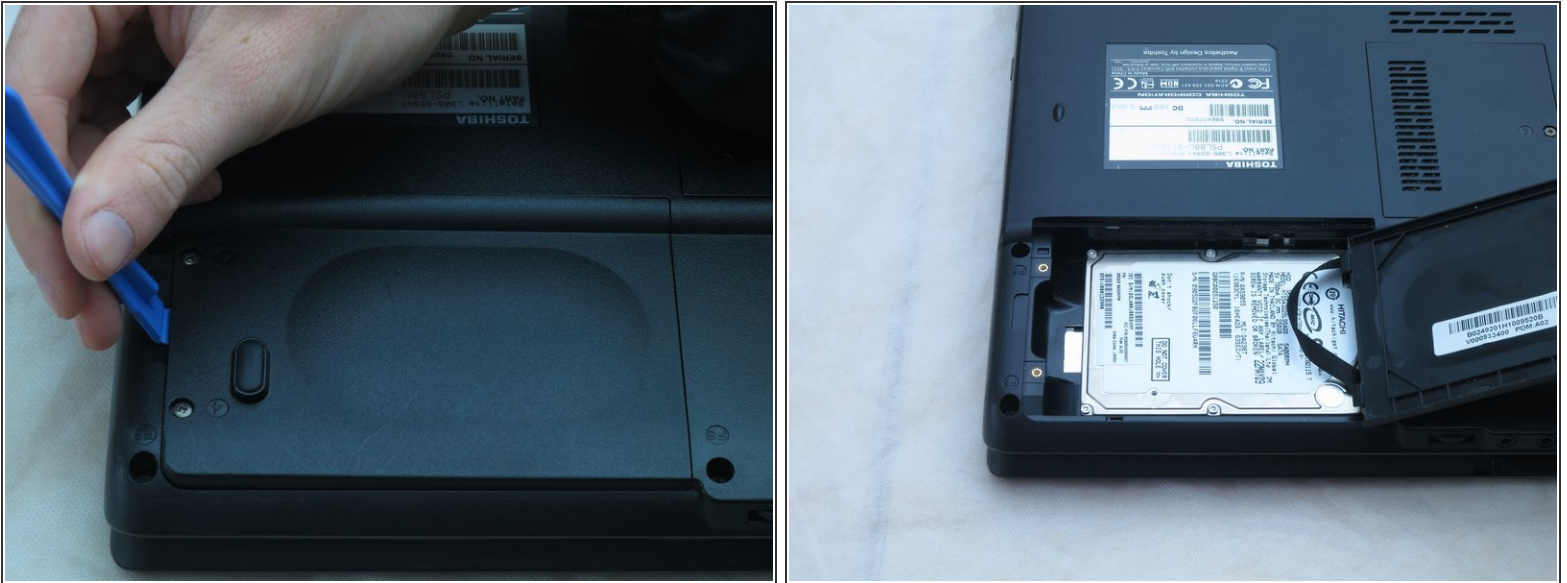
## Step 4 — Hard Drive



- Use a Phillips #1 screwdriver to loosen the two screws on the bottom left-hand side of the hard drive cover.
- Turn each screw until you hear a click.
- *i* These are captive panel screws and remain with the cover.



## Step 5



- Lift the hard drive cover using a non-marring plastic opening tool.
- ⓘ This will expose the hard drive.

## Step 6



- Slide the hard drive to the left using your fingers.
- Insert a plastic opening tool under the right side of the hard drive.
- Carefully lift and remove the hard drive.

To reassemble your device, follow these instructions in reverse order.

This document was generated on 2019-10-01 09:25:28 AM (MST).

