



# Toshiba Satellite L305-S5946 Keyboard Replacement

Replace the keyboard in your Toshiba Satellite L305-S5946.

Written By: Michael Erberich



## INTRODUCTION

Use this guide to replace the keyboard in your Toshiba Satellite L305-S5946. Unresponsive or sticky keys are good indicators that the keyboard should be replaced. You must remove the keyboard to access the base housing.



### TOOLS:

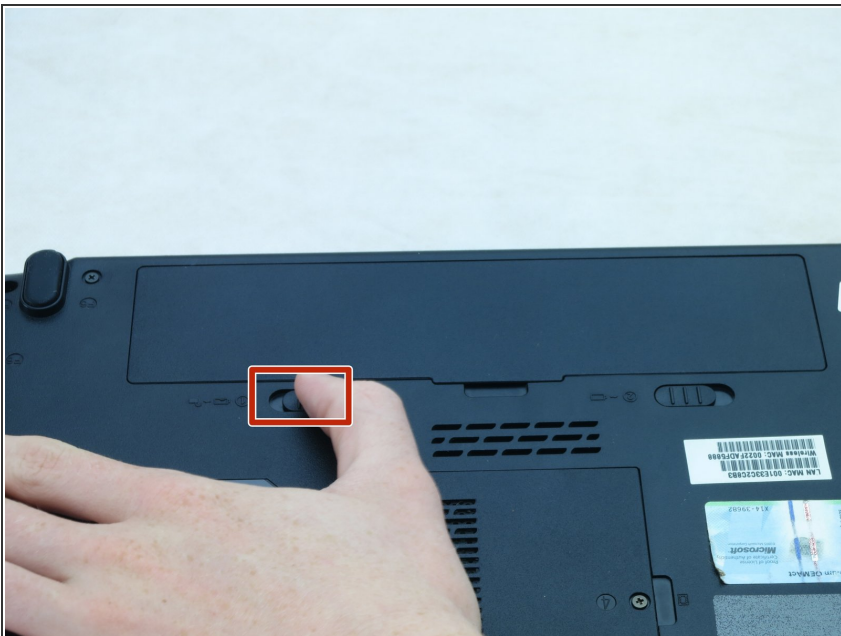
- [iFixit Opening Tools](#) (1)
  - [Phillips #00 Screwdriver](#) (1)
-

## Step 1 — Battery



- Turn the laptop upside-down.
- Position the laptop so that the display hinges are facing away from you.

## Step 2



- Slide the left battery bay latch to the left.

### Step 3



- Slide the right battery bay latch to the right and hold.
- While holding onto the latch, use a plastic opening tool to lift and remove the battery bay cover.
- Remove the battery.

### Step 4 — Hard Drive



- Use a Phillips #1 screwdriver to loosen the two screws on the bottom left-hand side of the hard drive cover.
- Turn each screw until you hear a click.
- ⓘ These are captive panel screws and remain with the cover.

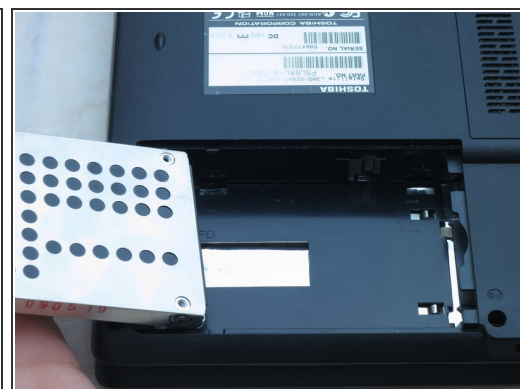


## Step 5



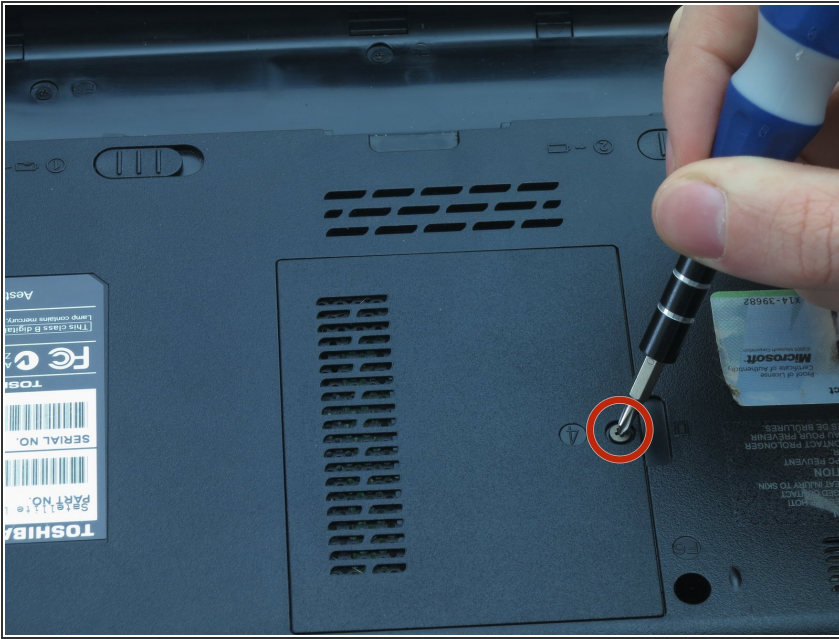
- Lift the hard drive cover using a non-marring plastic opening tool.
- ⓘ This will expose the hard drive.

## Step 6



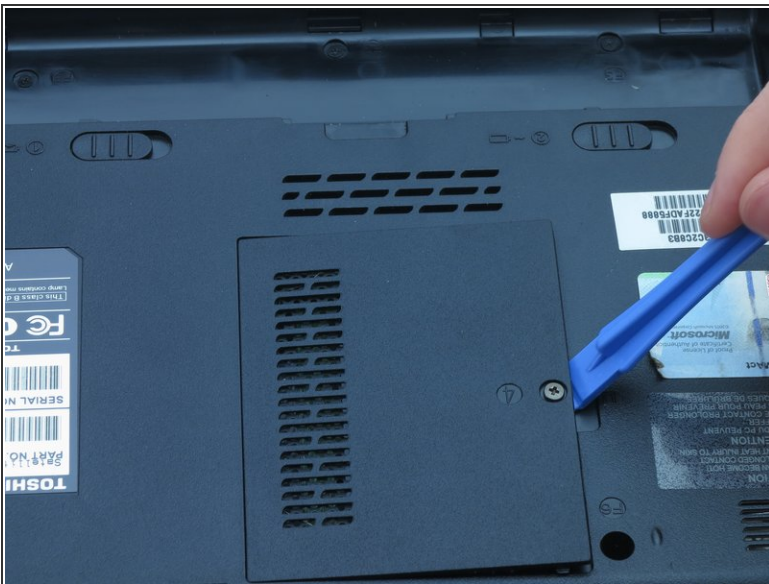
- Slide the hard drive to the left using your fingers.
- Insert a plastic opening tool under the right side of the hard drive.
- Carefully lift and remove the hard drive.

## Step 7 — RAM



- Use a Phillips #1 screwdriver to turn the screw on the RAM cover.
- Turn the screw until you hear a click.
- ⓘ This is a captive panel screw and remains with the cover.

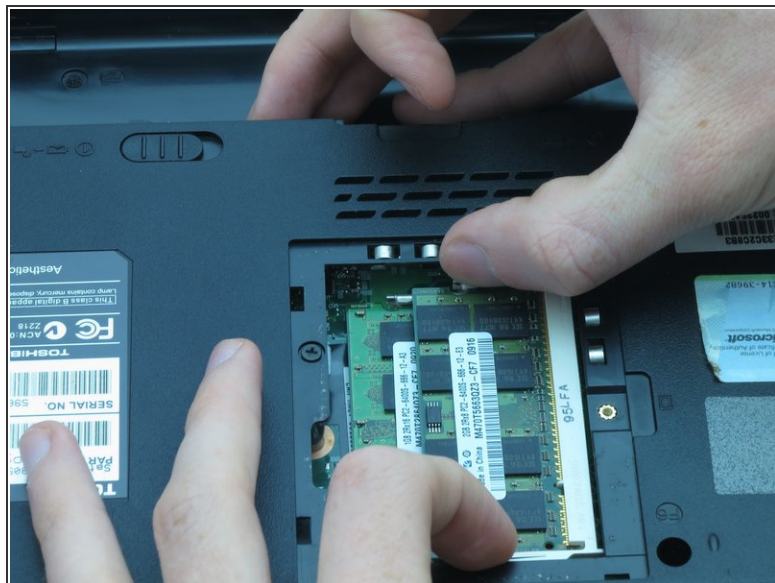
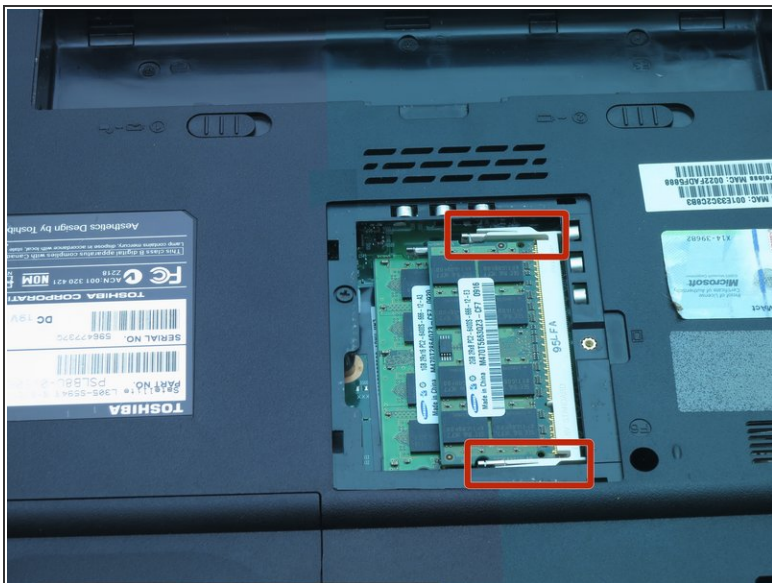
## Step 8



- Insert the plastic opening tool into the indent and lift to remove the RAM cover.
- ⓘ This is a captive panel screw and remains with the cover.



## Step 9



- Use your fingernails to push the white and silver retaining clips away from each side of the RAM card.
- ❗ The RAM card should pop up at an angle.

## Step 10



- Use your fingers to gently pull the RAM card away from the computer.
- Repeat step 9 to remove the other RAM card that may be installed.

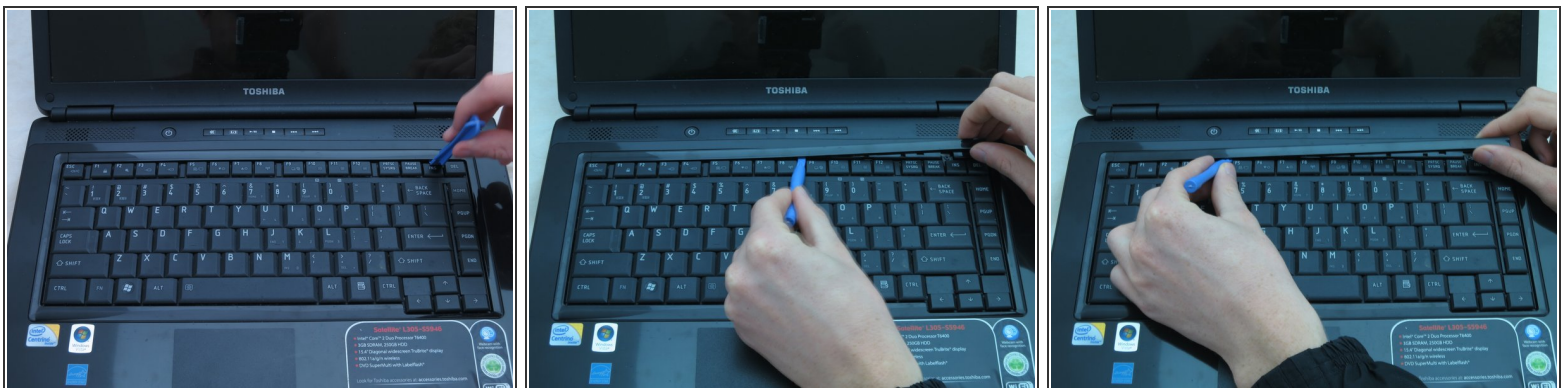
This document was generated on 2019-09-22 11:43:52 AM (MST).

## Step 11 — Keyboard



- Turn the laptop right-side up.
- Lift open the laptop so that the screen faces you.

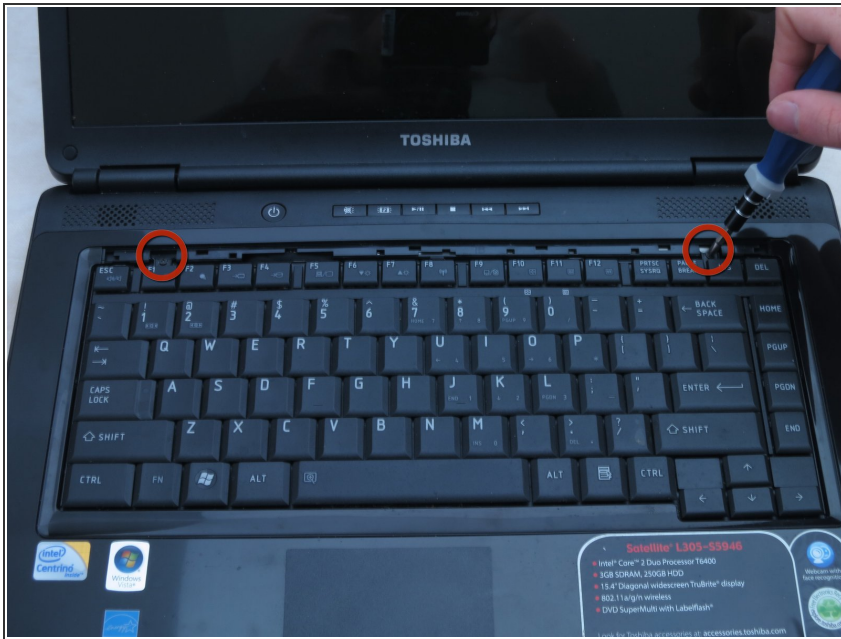
## Step 12



- Remove the strip of plastic at the right furthest edge of the keyboard using a plastic opening tool.
- Insert the plastic opening tool at either end of the strip. Lift upwards and proceed to the other end while repeating this lifting process every one to two inches.

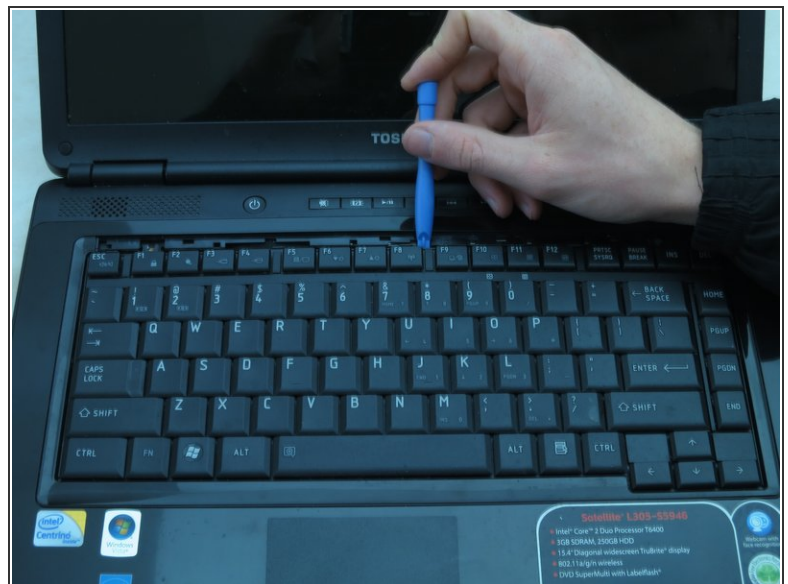
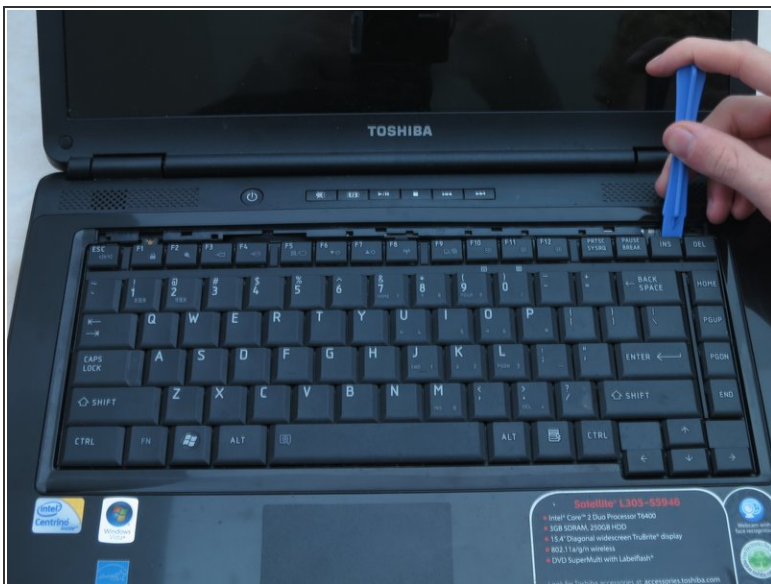


## Step 13



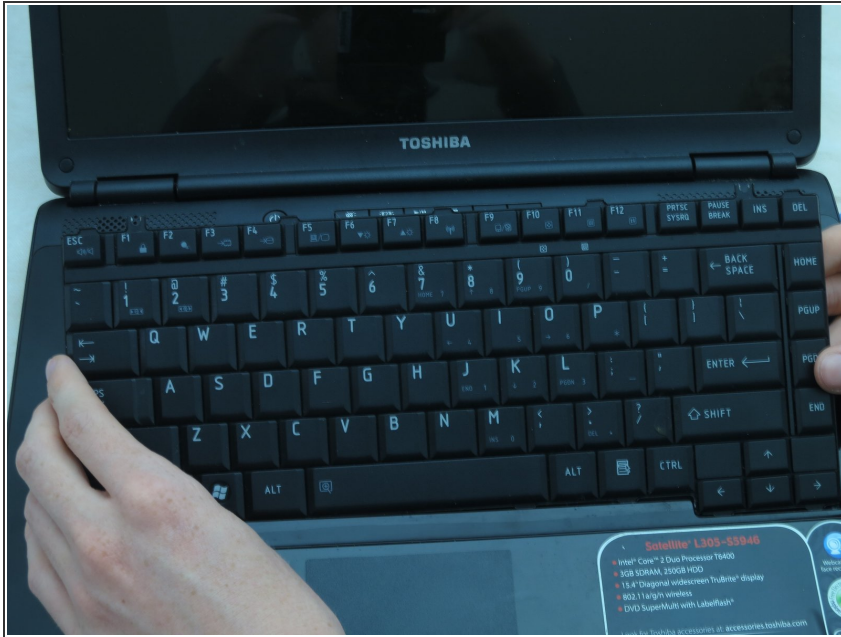
- Use a Philips #00 screwdriver to loosen and remove the two 3-mm screws at the top edge of the keyboard.
- ⓘ These are not captive panel screws and, once loosened, will be free to move about the assembly.
- ⚠ Be careful not to allow either fastener into the CPU fan and duct (not shown).

## Step 14



- Use a plastic opening tool to pry the top of the keyboard loose from its casing.

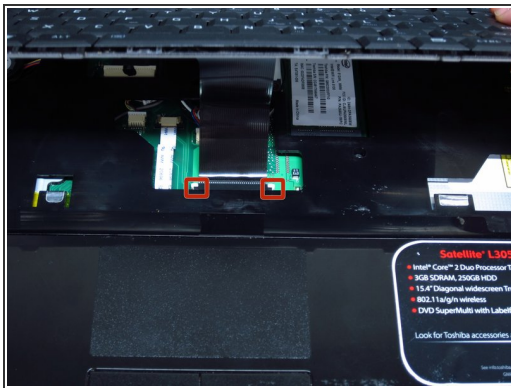
## Step 15



- Gently grasp the top of the keyboard. Pull it up and toward the screen.

⚠ Avoid pulling hard and damaging the black ribbon cable under the keyboard.

## Step 16



- Gently push the two tabs locking the black ribbon cable.
- Slide the keyboard toward the screen to remove the black ribbon cable from the motherboard.
- You may now safely separate the keyboard from the laptop.

To reassemble your device, follow these instructions in reverse order.