



Toshiba Satellite L305-S5946 RAM Replacement

Remove RAM from your Toshiba Satellite L305-S5946.

Written By: Michael Erberich



INTRODUCTION

Use this guide to replace or upgrade RAM cards in your Toshiba Satellite L305-S5946. Replacing your RAM cards will allow you to work with more programs. Doing this requires only removal of the battery as a precursor.



TOOLS:

- [iFixit Opening Tools](#) (1)
- [Phillips #1 Screwdriver](#) (1)



PARTS:

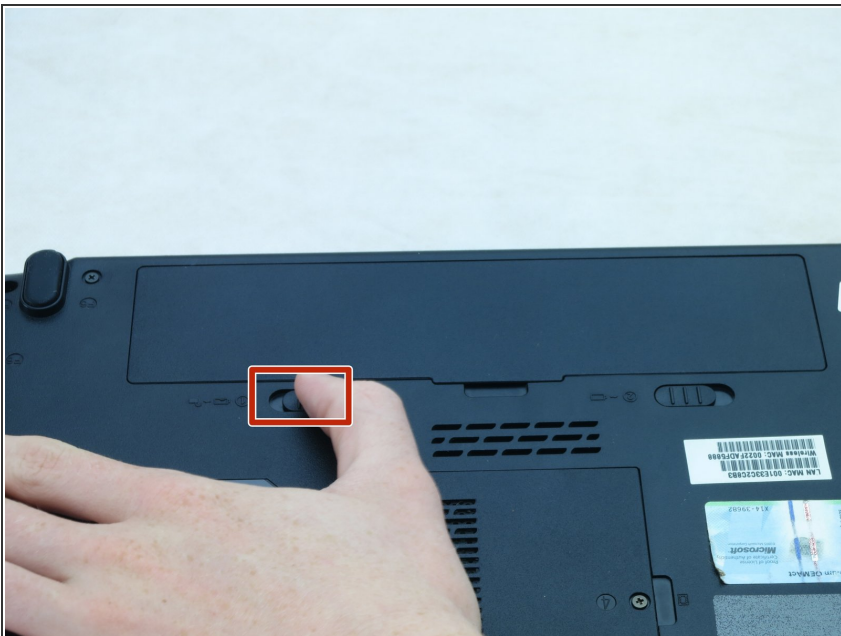
- [PC2-6400 2 GB RAM Chip](#) (1)

Step 1 — Battery



- Turn the laptop upside-down.
- Position the laptop so that the display hinges are facing away from you.

Step 2



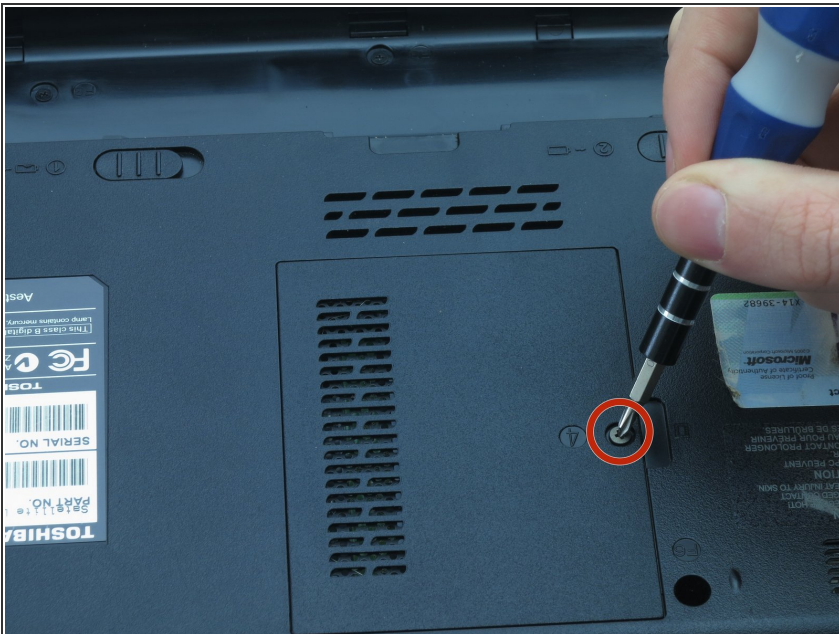
- Slide the left battery bay latch to the left.

Step 3



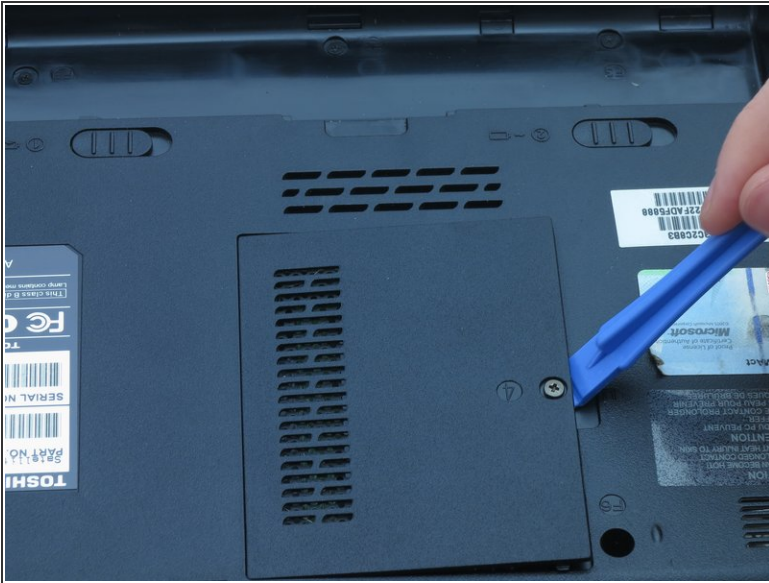
- Slide the right battery bay latch to the right and hold.
- While holding onto the latch, use a plastic opening tool to lift and remove the battery bay cover.
- Remove the battery.

Step 4 — RAM



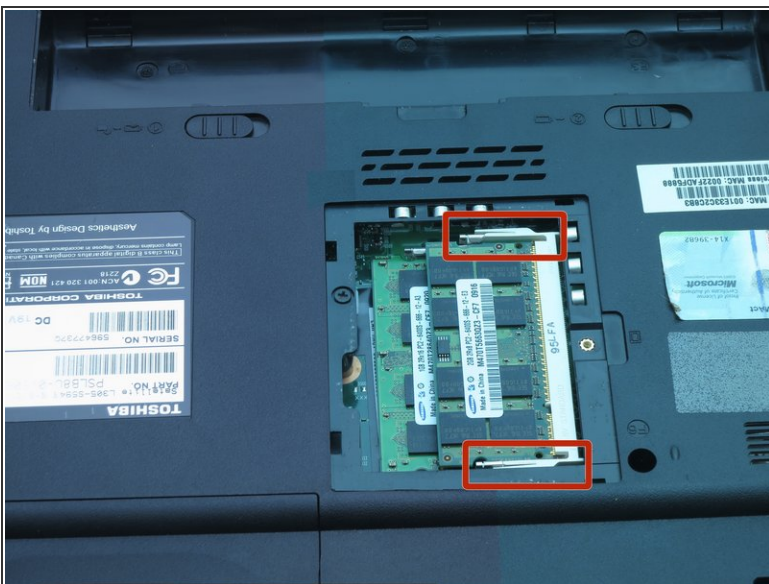
- Use a Phillips #1 screwdriver to turn the screw on the RAM cover.
- Turn the screw until you hear a click.
- ⓘ This is a captive panel screw and remains with the cover.

Step 5



- Insert the plastic opening tool into the indent and lift to remove the RAM cover.
- ⓘ This is a captive panel screw and remains with the cover.

Step 6



- Use your fingernails to push the white and silver retaining clips away from each side of the RAM card.
- ⓘ The RAM card should pop up at an angle.

Step 7



- Use your fingers to gently pull the RAM card away from the computer.
- Repeat step 9 to remove the other RAM card that may be installed.

To reassemble your device, follow these instructions in reverse order.