



Toshiba Satellite L305-S5955 Hard Drive Replacement

How to remove the hard drive from a Toshiba Satellite L305-S5955

Written By: Eric





TOOLS:

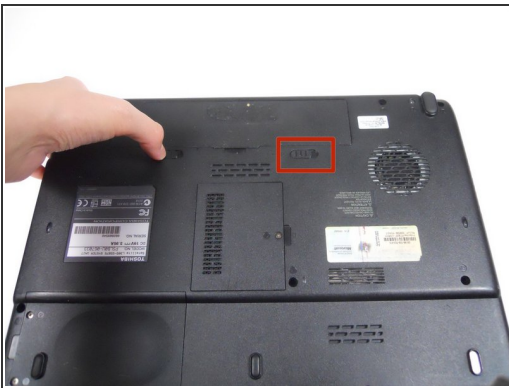
- [Phillips #0 Screwdriver](#) (1)
-

Step 1 — Battery



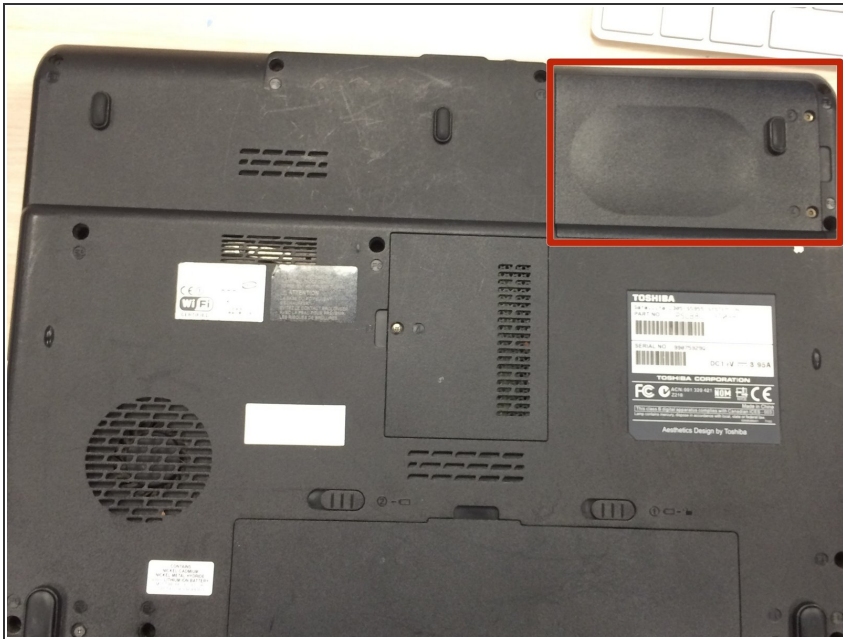
- Close the laptop lid and flip the laptop over.
- Switch the lock button on the left to the unlock position. (The unlock position is to the left side.)

Step 2



- Push the release button to the right.
- Hold the release button to the right and lift the battery out of its housing.

Step 3 — Hard Drive



- Locate the hard drive on the laptop, above the part number and serial number sticker

Step 4



- Remove the two screws marked "4" from the hard drive cover

Step 5



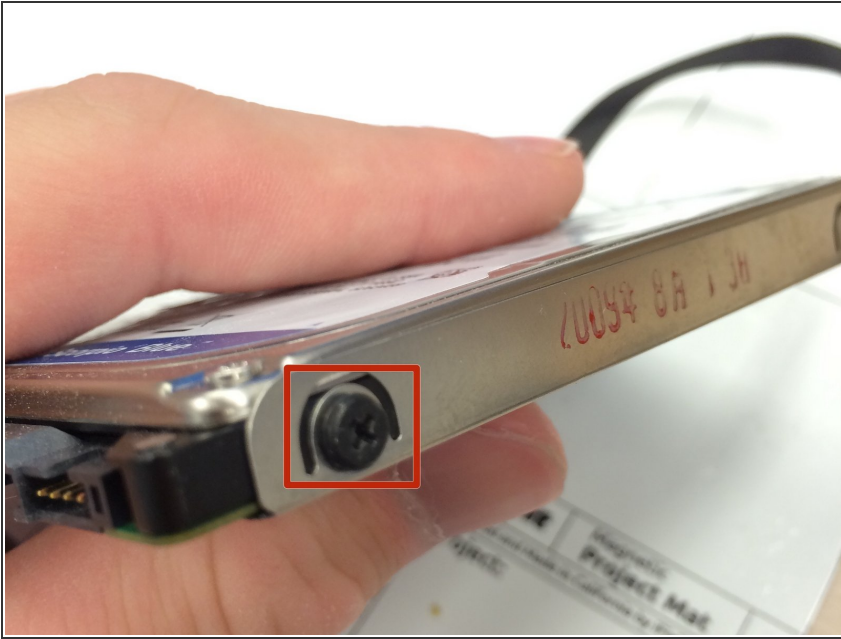
- Pry up the cover of the hard drive compartment.

Step 6



- Slide hard drive out by pulling gently on the felt handle

Step 7



- Remove four outer black screws on the corners of the hard drive case

Step 8



- Remove hard drive from the casing by gently sliding the drive out of the case.

Step 9



- Complete these steps in reverse order to insert hard drive back into laptop.

To reassemble your device, follow these instructions in reverse order.