



Toshiba Satellite L305-S5955 Keyboard Replacement

Step by step guide in replacing the keyboard.

Written By: Chris



INTRODUCTION

In this guide you will learn how to remove and replace the keyboard for the Toshiba Satellite L305-S5955 laptop.



TOOLS:

- [Phillips #000 Screwdriver](#) (1)
 - [iFixit Opening Tools](#) (1)
-

Step 1 — Lock Tabs



- Slide the lock tabs outward. The right tab will lock into place, but the left tab must be held in place.

Step 2



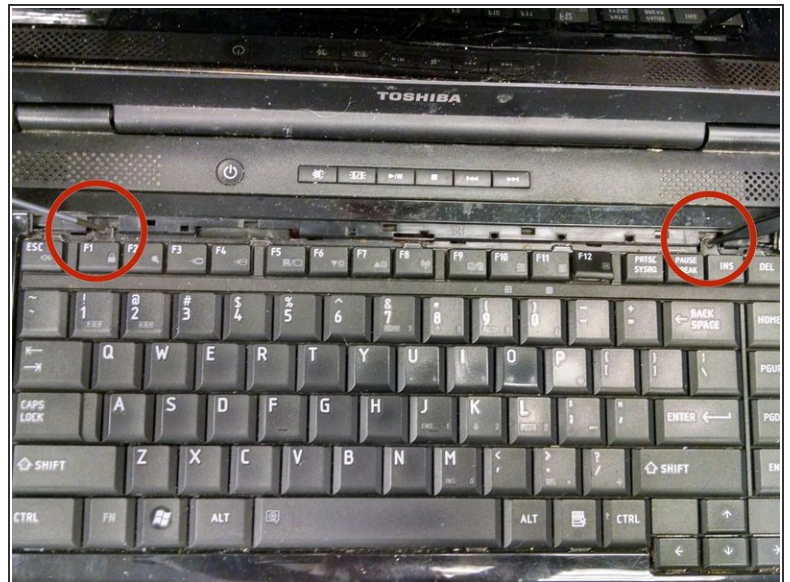
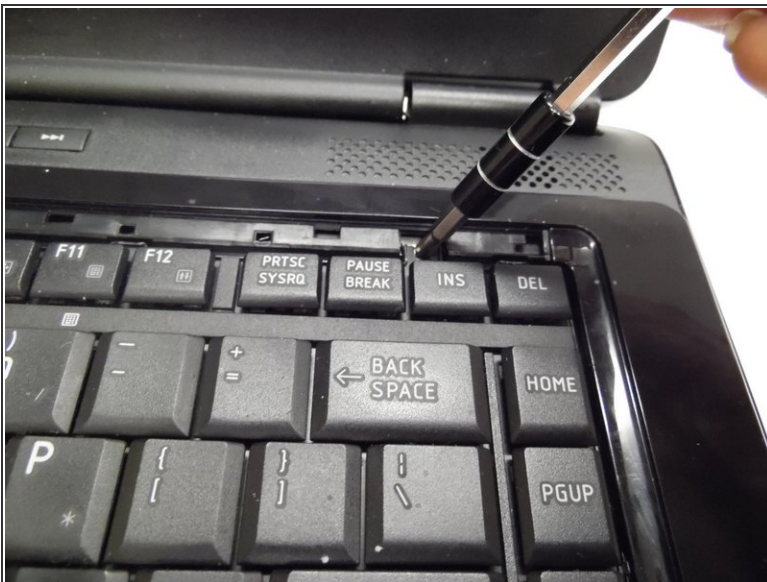
- When you hear a click, lift up and pull out the battery.

Step 3 — Keyboard



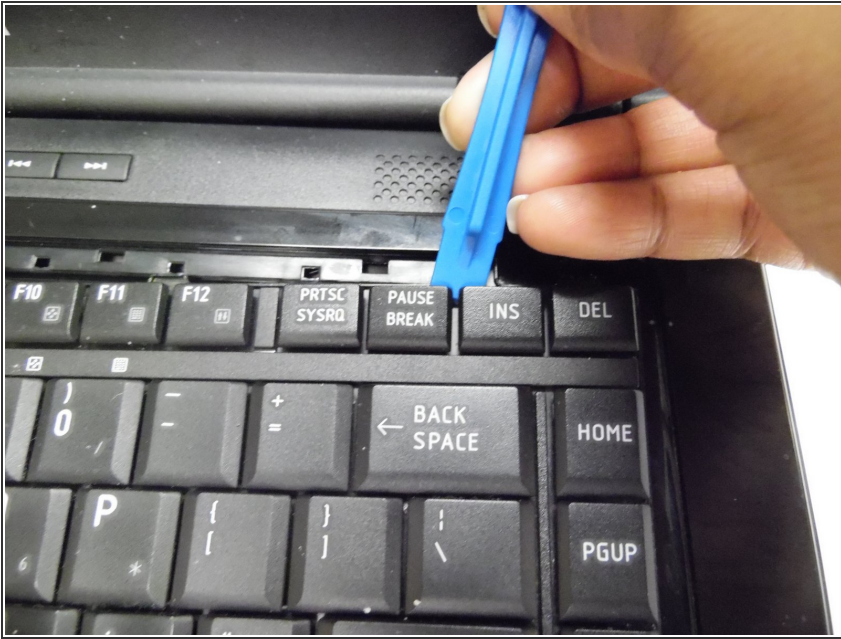
- Use a plastic opening tool to lift out keyboard lining portion located at the top of the keyboard.

Step 4



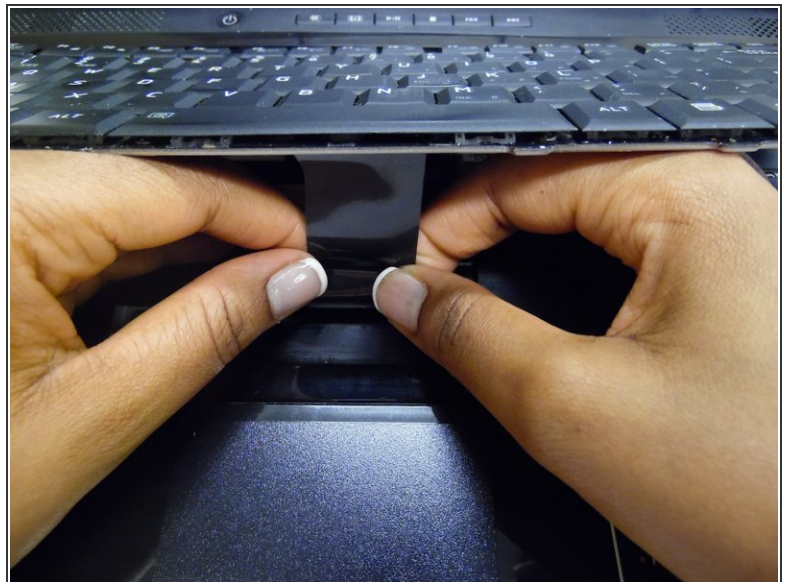
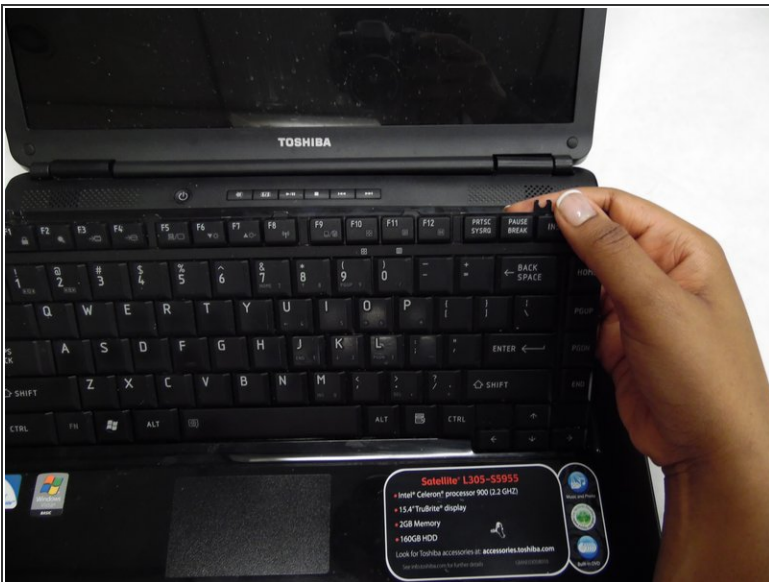
- Remove the 3.6 mm Phillips head PH000 screws securing the keyboard.

Step 5



- Use plastic opening tool to pry out the keyboard, starting by the 'delete' key in the top right corner.

Step 6



- Lift the keyboard up and locate the ribbon.
- Gently pull the ribbon out of its compartment to release it from the motherboard.

To reassemble your device, follow these instructions in reverse order.