



Toshiba Satellite L305-S5955 Wireless Card Replacement

This guide will give you detailed instructions on how to replace the wireless card in your Toshiba Satellite laptop.

Written By: Samuel Baker



INTRODUCTION

If your wireless card fails or is under performing, don't buy a new computer. Simply replace your wireless card with this guide.



TOOLS:

- [Phillips #000 Screwdriver](#) (1)
 - [Phillips #1 Screwdriver](#) (1)
 - [iFixit Opening Tools](#) (1)
-

Step 1 — Lock Tabs



- Slide the lock tabs outward. The right tab will lock into place, but the left tab must be held in place.

Step 2



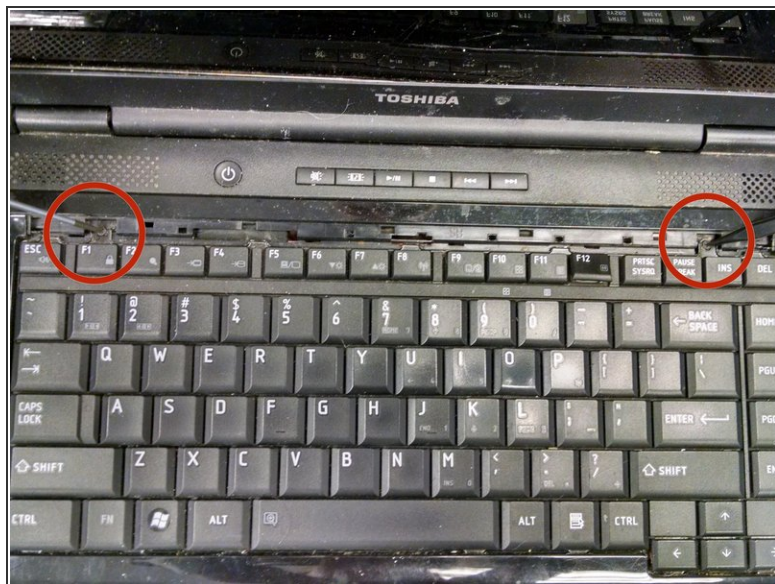
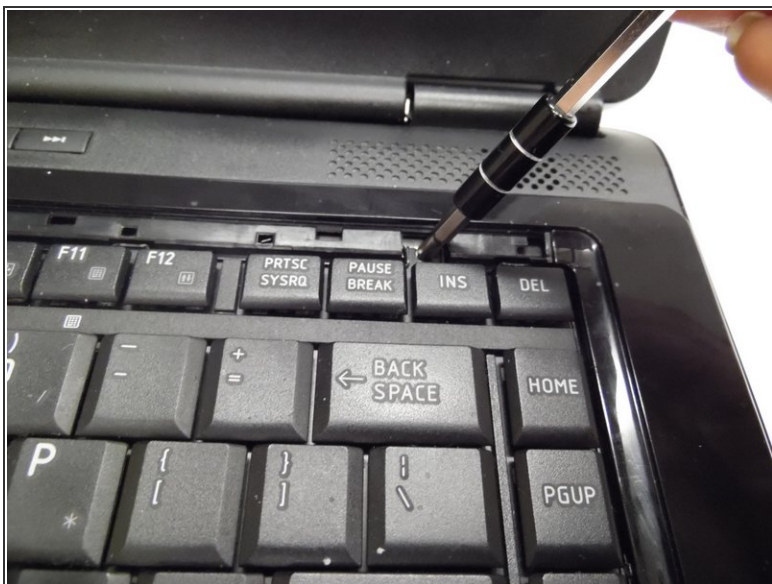
- When you hear a click, lift up and pull out the battery.

Step 3 — Keyboard



- Use a plastic opening tool to lift out keyboard lining portion located at the top of the keyboard.

Step 4



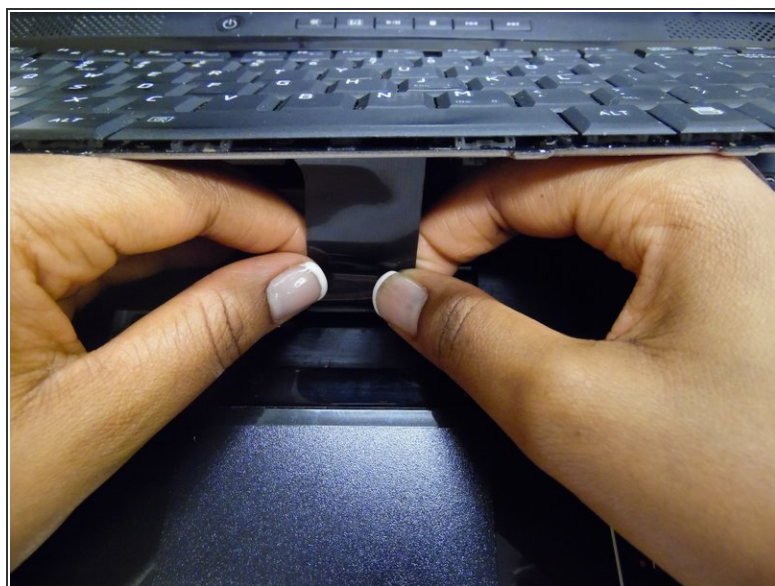
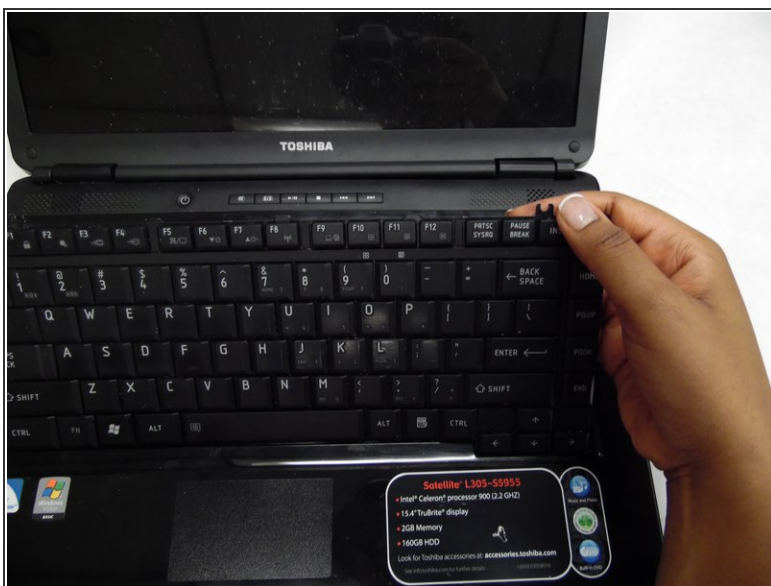
- Remove the 3.6 mm Phillips head PH000 screws securing the keyboard.

Step 5



- Use plastic opening tool to pry out the keyboard, starting by the 'delete' key in the top right corner.

Step 6



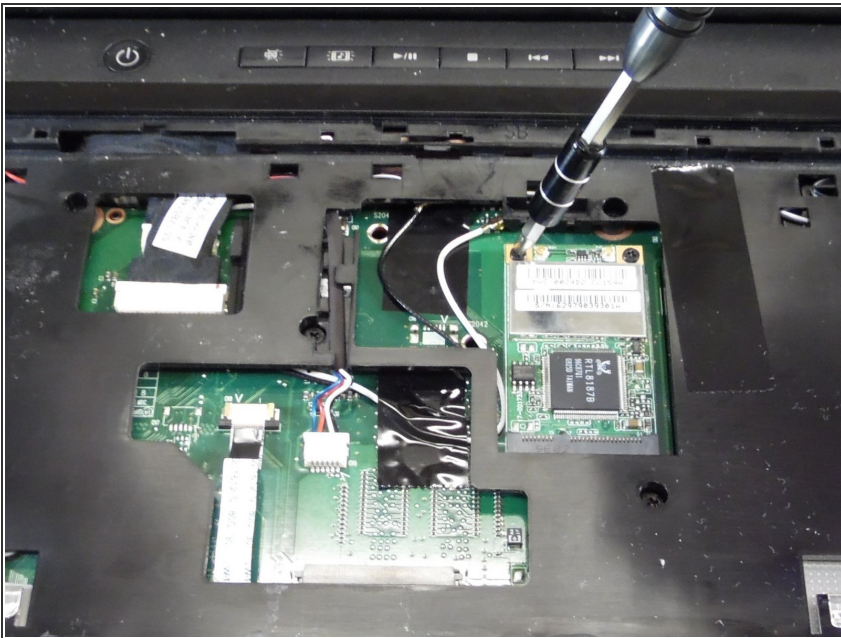
- Lift the keyboard up and locate the ribbon.
- Gently pull the ribbon out of its compartment to release it from the motherboard.

Step 7 — Wireless Card



- Detach white and black wires by gently pulling straight up.

Step 8



- Unscrew both 3 mm Phillips head PH1 screws and allow the wireless card to pop up.

Step 9



- Pull the card out vertically.

To reassemble your device, follow these instructions in reverse order.