



# Toshiba Satellite L305D-S5895 CD Drive Replacement CD Drive Replacement

This guide will provide you with the instructions needed to replace the CD Drive on a Toshiba Satellite L305D-S5895.

Written By: Nathan Merlan



## INTRODUCTION

You will learn how to replace a broken CD Drive on a Toshiba Satellite L305D-S5895.



### TOOLS:

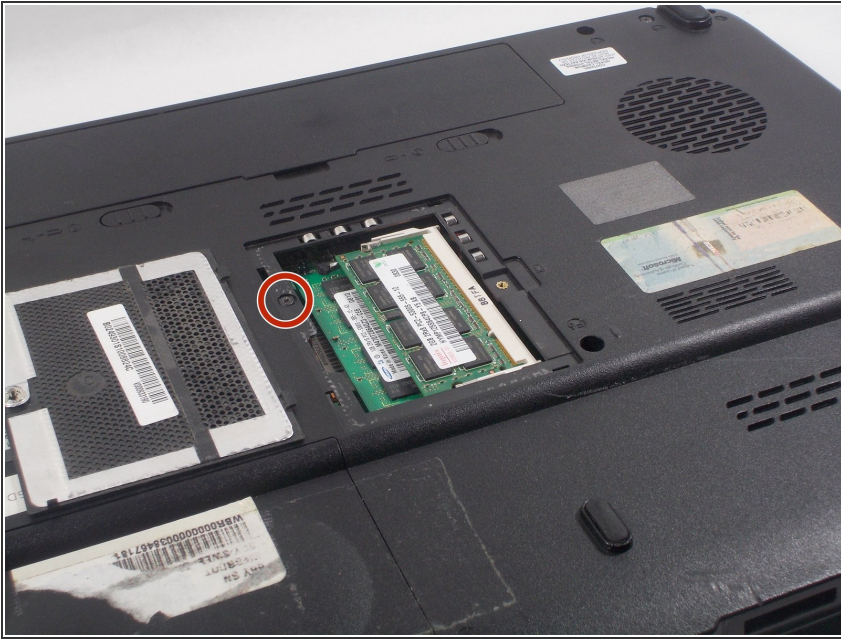
- [Phillips #0 Screwdriver](#) (1)



### PARTS:

- [Toshiba Satellite L305D-S5895 CD Drive](#) (1)

## Step 1 — CD Drive



- Locate the screw underneath the RAM cover.
- ⓘ If you do not know how to access RAM cover view this repair guide [Toshiba Satellite L305D-S5895 RAM Replacement](#).

## Step 2



- Undo screw with your Phillips #0 screwdriver.



### Step 3



- Push out CD Drive using your finger.
- ❗ You will have to go underneath the plastic cover of the laptop to access it, as shown in the picture.

### Step 4



- Use your fingers to pull out the CD Drive by the face of the drive.

To reassemble your device, follow these instructions in reverse order.