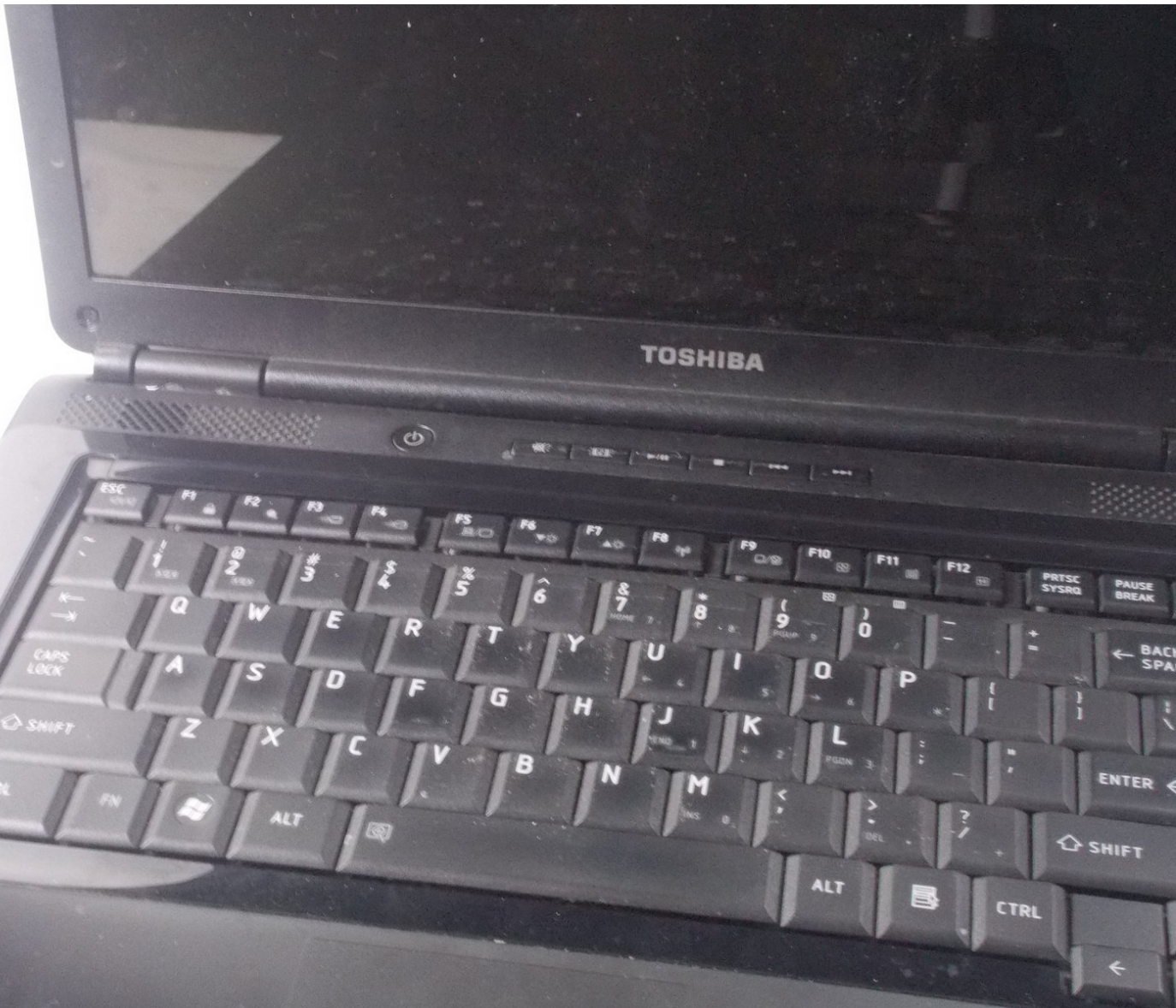




# Toshiba Satellite L305D-S5895 Keyboard Replacement

Replacing a faulty Keyboard in a Toshiba Satellite L305D-S5895

Written By: Tyler GLick

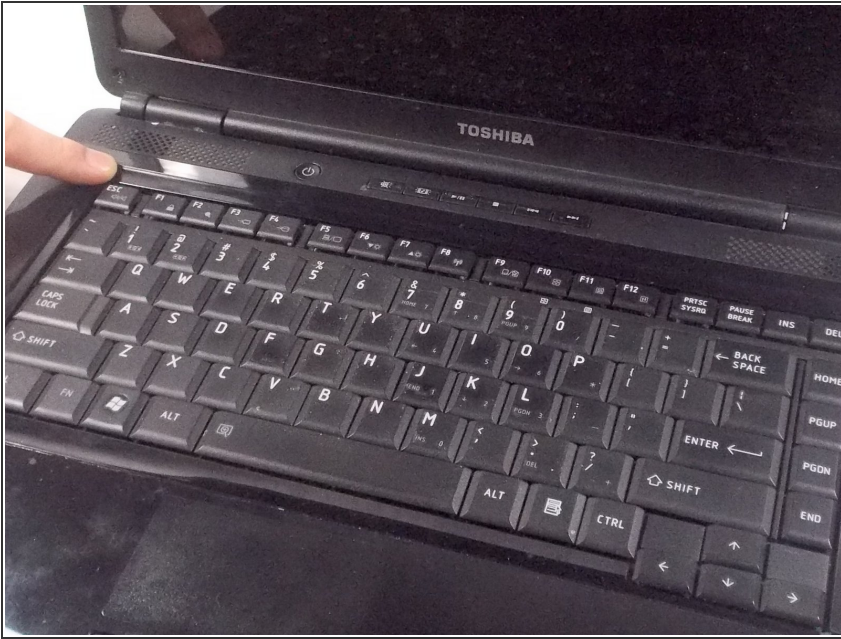




## TOOLS:

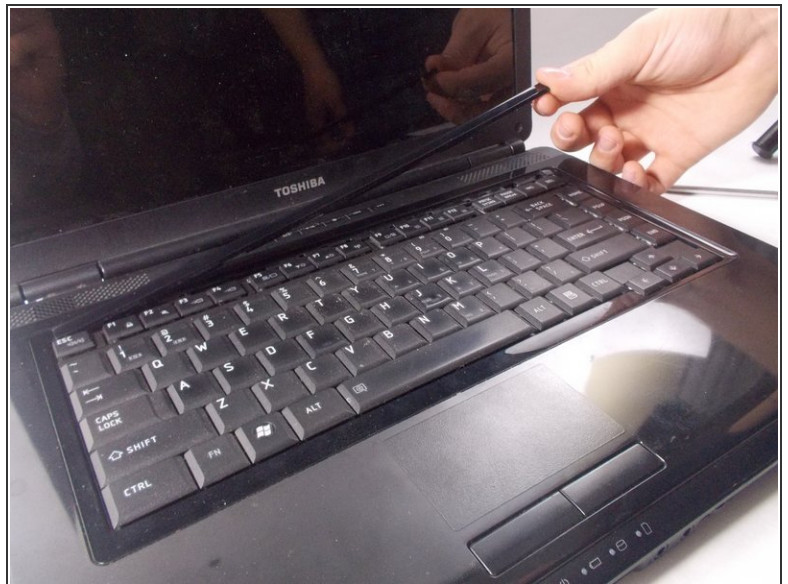
- [Metal Spudger](#) (1)
- [Phillips #0 Screwdriver](#) (1)

## Step 1 — Keyboard



- Locate at the top of the key board a long thin plastic cover that extends from above the Del key to the top of the Esc button.

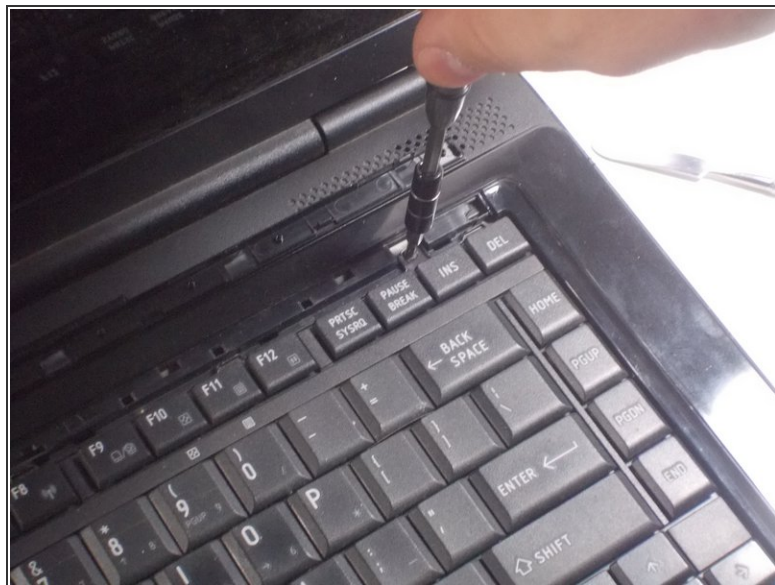
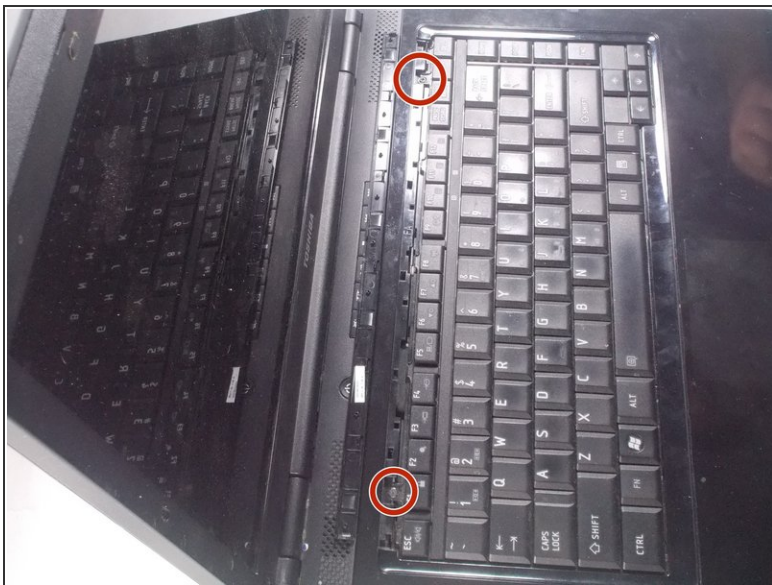
## Step 2



- Pry up this plastic cover using the Spudger, and carefully remove the plastic cover from the laptop.



### Step 3



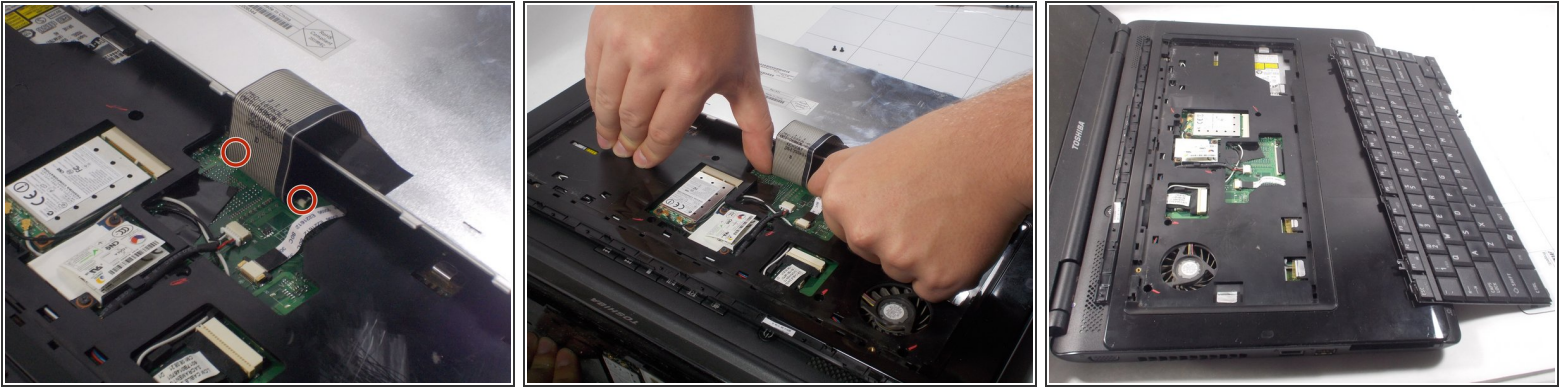
- After putting the plastic cover to the side, locate the two screws holding the keyboard to the laptop.
- Remove the screws using the Phillips #0 screwdriver, and place the screws on the magnetic board.

### Step 4



- Lift the keyboard up in order to remove the cable.

## Step 5



- Notice the two white tabs on the compartment holding the cable.
- Carefully unplug the keyboard from the motherboard by pulling the two white tabs away from the compartment holding the wire.

To reassemble your device, follow these instructions in reverse order.