



Toshiba Satellite L305D-S5900 Keyboard Replacement

This guide will show you how to remove the keyboard attached to the laptop.

Written By: Sing Yang Cheng



INTRODUCTION

If your keyboard needs a thorough cleaning or needs a replacement, this is the guide you're looking for. This guide will show you how to safely remove your keyboard from the computer's shell.



TOOLS:

- [Metal Spudger](#) (1)
 - [Phillips #1 Screwdriver](#) (1)
-

Step 1 — Keyboard



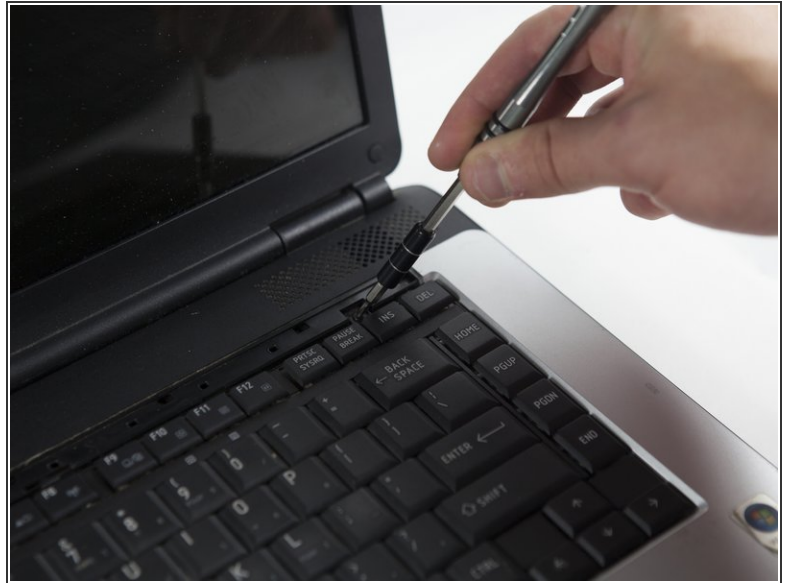
- ❗ Power off your laptop before beginning disassembly.
- The plastic strip boxed in red is located above the keyboard of the computer.

Step 2



- There are three points of contact boxed in red needed to release located at the far left, the far right and the middle of the plastic strip.
- Remove the plastic strip from one far end progressively towards the other end using a metal spludger.

Step 3



- Remove the two 5.3 mm Phillips #1 screws that are beneath the strip.
- ⓘ The screws located at the far left and far right when the plastic strip is removed.

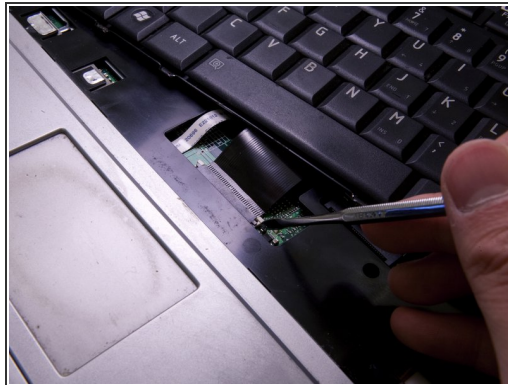
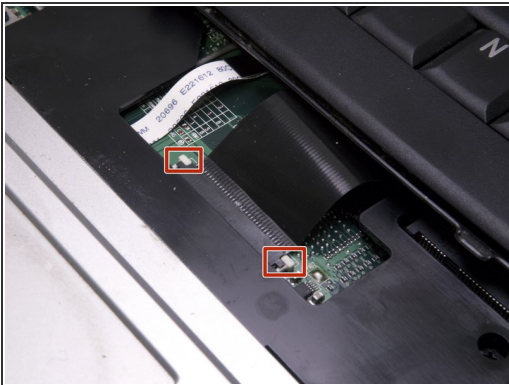
Step 4



- Use the metal spludger to push the keyboard in the direction of the track pad and then lift the keyboard up.

⚠ Be careful not to pull too fast as there is still another cable attaching the keyboard.

Step 5



- There are two tab boxed in red is located at each side of the ZIF (zero insertion force) connector.
- Use a metal spludger to push the tab upward in order to release the cable ribbon.
- Carefully pull out the ribbon cable from the ZIF (zero insertion force) connector.

To reassemble your device, follow these instructions in reverse order.