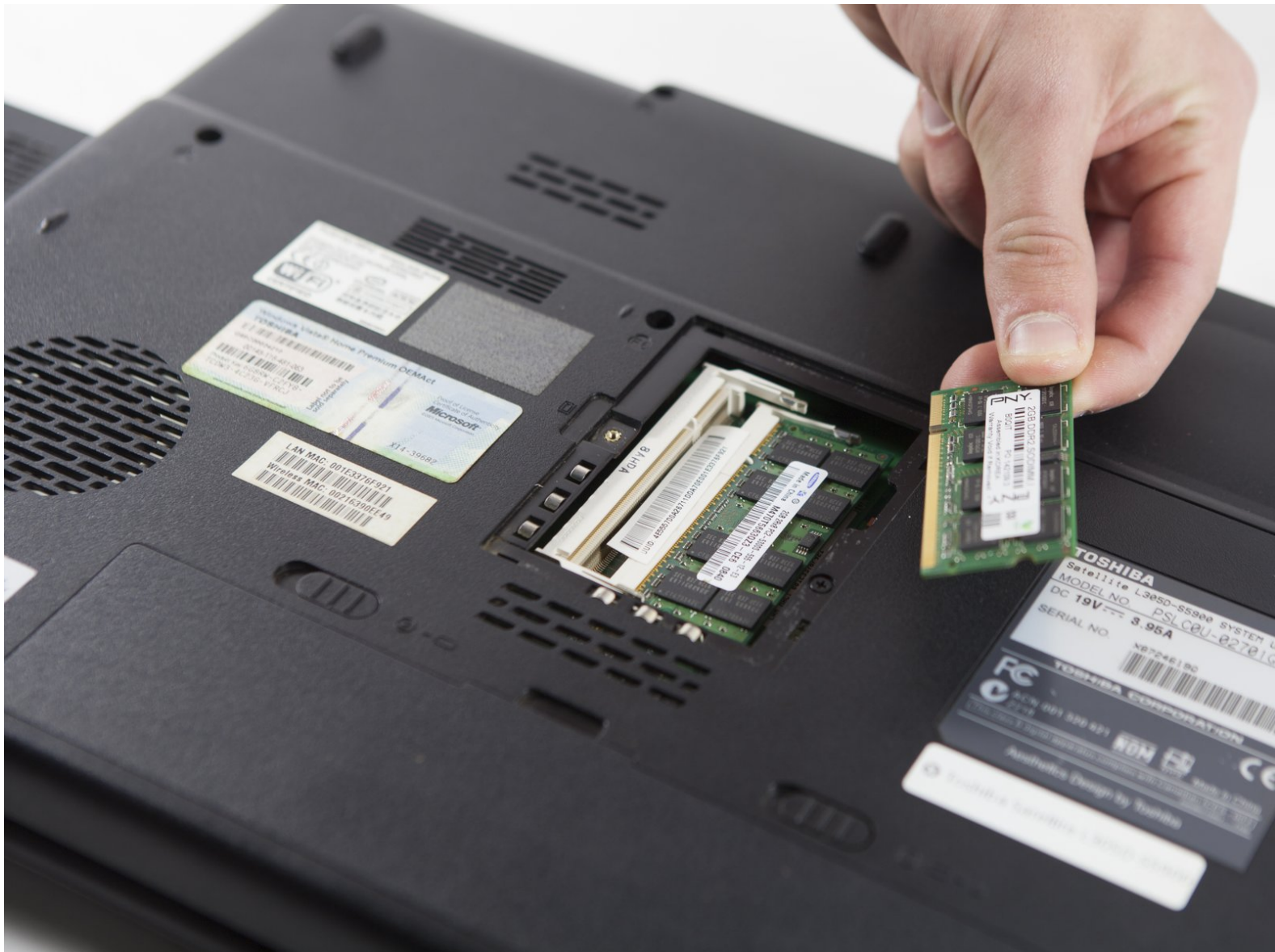




Toshiba Satellite L305D-S5900 RAM Replacement

This guide will show you how to access and remove/replace the RAM.

Written By: Sing Yang Cheng



INTRODUCTION



Whether you're upgrading, replacing, or just toying around with your computer's RAM, this guide will provide the steps to access and remove the computer's RAM chips.

TOOLS:

- [Phillips #1 Screwdriver](#) (1)
 - [iFixit Opening Tools](#) (1)
-

Step 1 — RAM



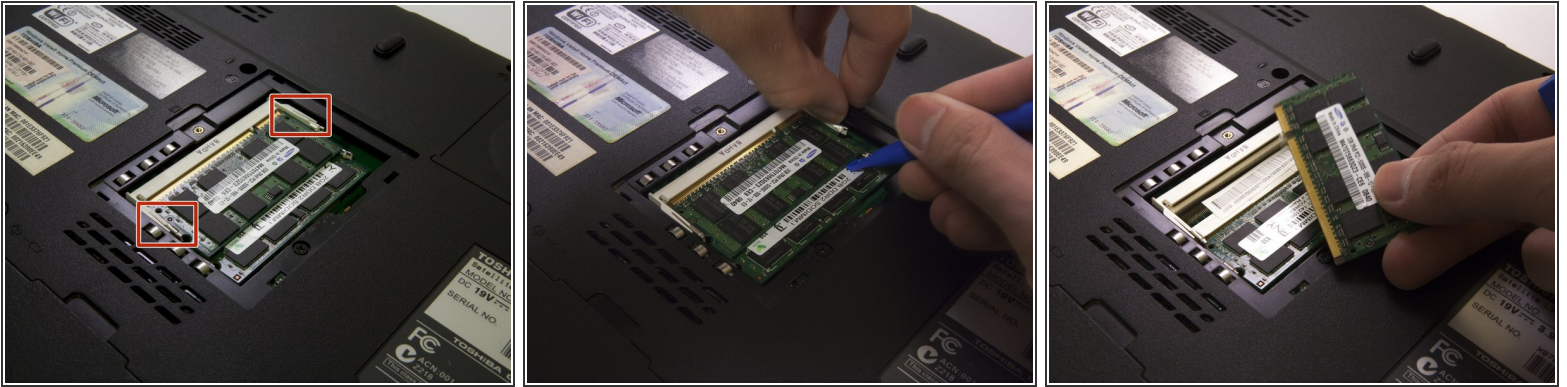
-  Power off your laptop before beginning disassembly.
-  The 5.3 mm Phillips #1 screw boxed in red is located at the center on the underside of the computer.

Step 2



- Remove the panel that houses the RAM chips by removing the screw that secures it into its spot.

Step 3



- There are two metal holdings boxed in red is located at each side of the RAM chip (left and right).
- Use a plastic opening tool or your fingers to carefully pull or push up from the underside of the RAM chip until it naturally sits in the socket at an angle.
- ⓘ If using too much force, push aside the metal holdings that holds on to the RAM chip on both side then attempt lifting it up
- ⓘ There are two RAM chips that can be removes. To remove the second RAM chips follow the same instructed as above.

To reassemble your device, follow these instructions in reverse order.