



# Toshiba Satellite L305D-S5950 CD Drive Replacement

This guide will illustrate how to replace the CD drive of a Toshiba Satellite L305D-S5950 laptop.

Written By: William





## TOOLS:

- [Spludger](#) (1)
- [Phillips #0 Screwdriver](#) (1)
- [Spudger](#) (1)



## Step 1 — Battery



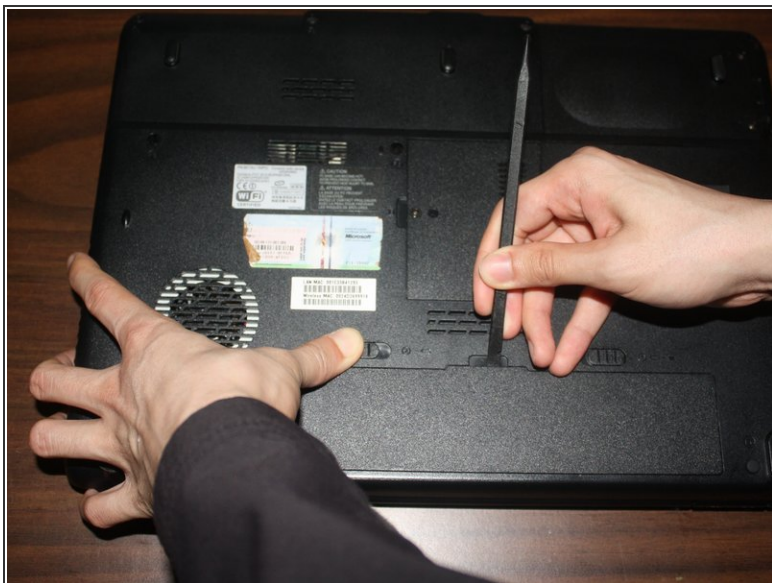
- Locate the two sliding battery locks on the underside of the laptop.

## Step 2



- Locate the right battery lock and slide it to the right.

### Step 3



- While holding the left battery lock to the left, lift up the battery using the tab located on the top center of the battery.

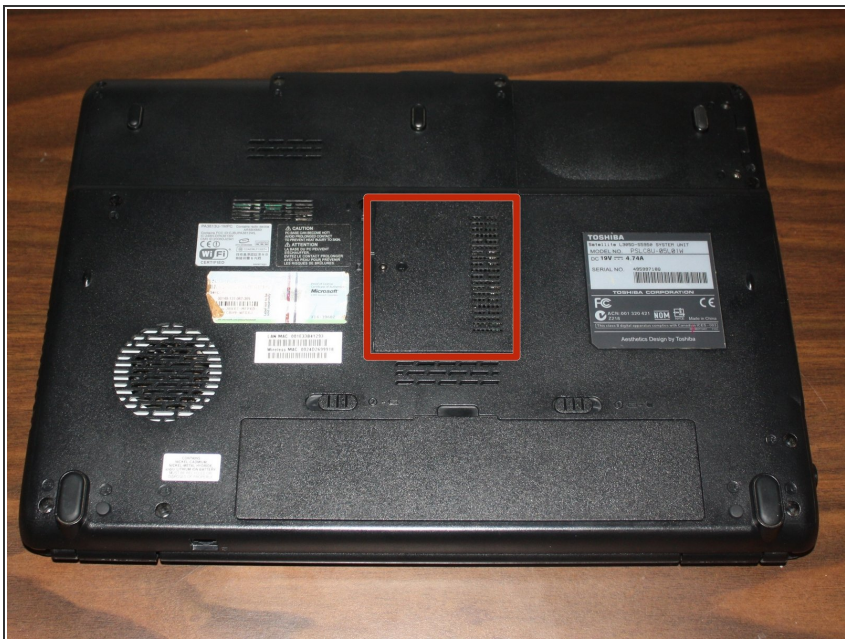
### Step 4



- Remove the battery from the laptop.



## Step 5 — CD Drive



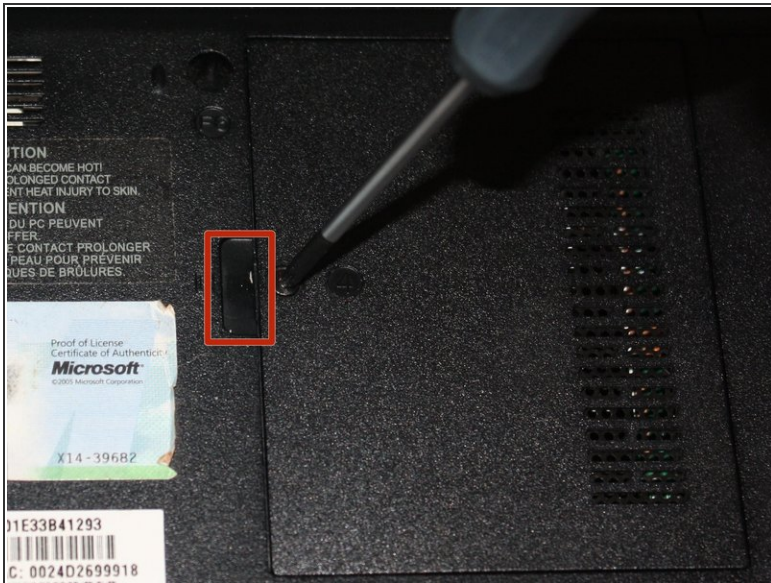
- Locate the RAM cover on the underside of the laptop.

## Step 6



- Use a phillips head #0 screwdriver to remove the screw located on the RAM cover.

## Step 7



- Using your fingers, carefully remove the cover.

To reassemble your device, follow these instructions in reverse order.