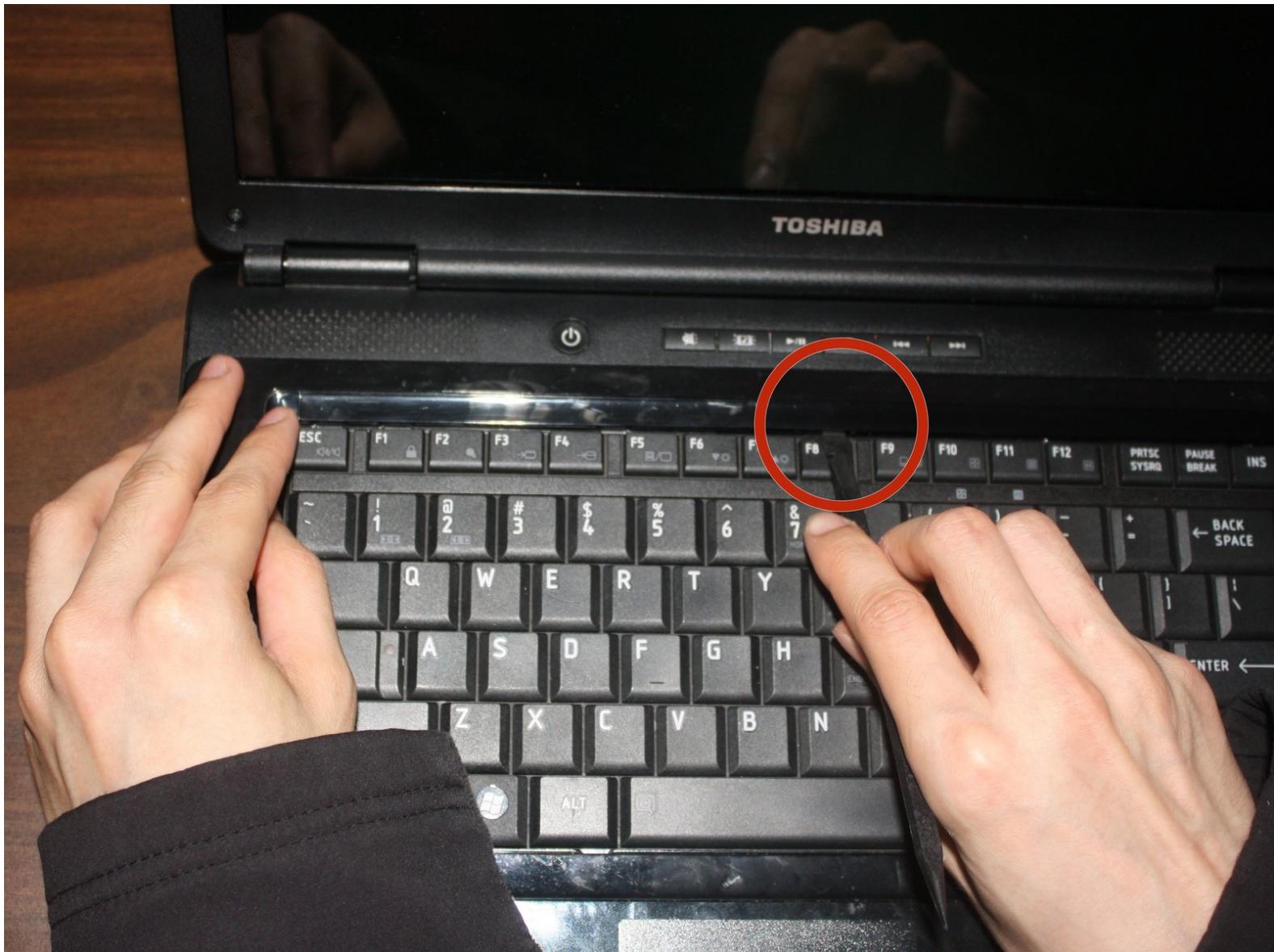




Toshiba Satellite L305D-S5950 Keyboard Replacement

Use these steps to replace the keyboard in your Toshiba Satellite L305D-S5950 laptop.

Written By: William





TOOLS:

- [Phillips #0 Screwdriver](#) (1)
 - [Spudger](#) (1)
-

Step 1 — Battery



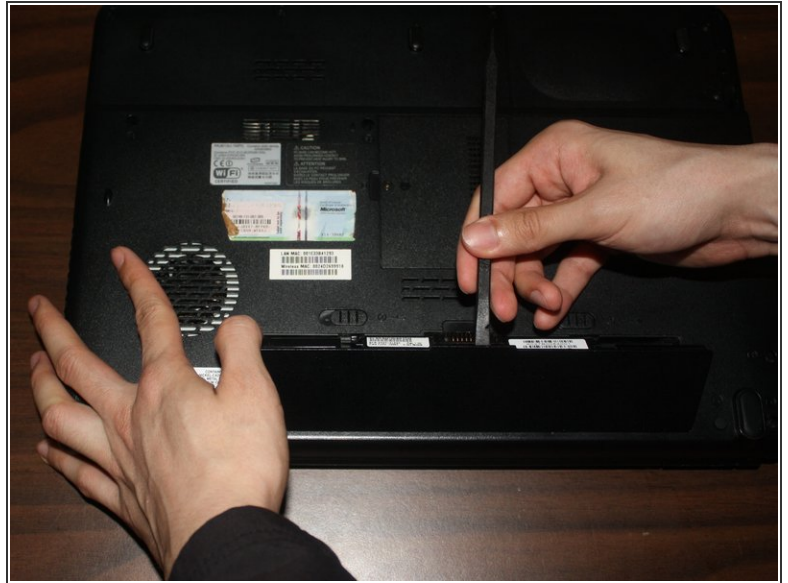
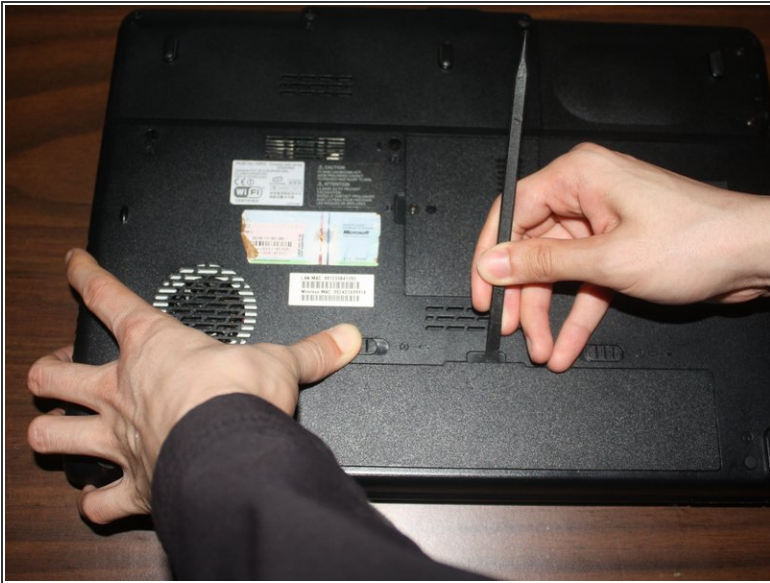
- Locate the two sliding battery locks on the underside of the laptop.

Step 2



- Locate the right battery lock and slide it to the right.

Step 3



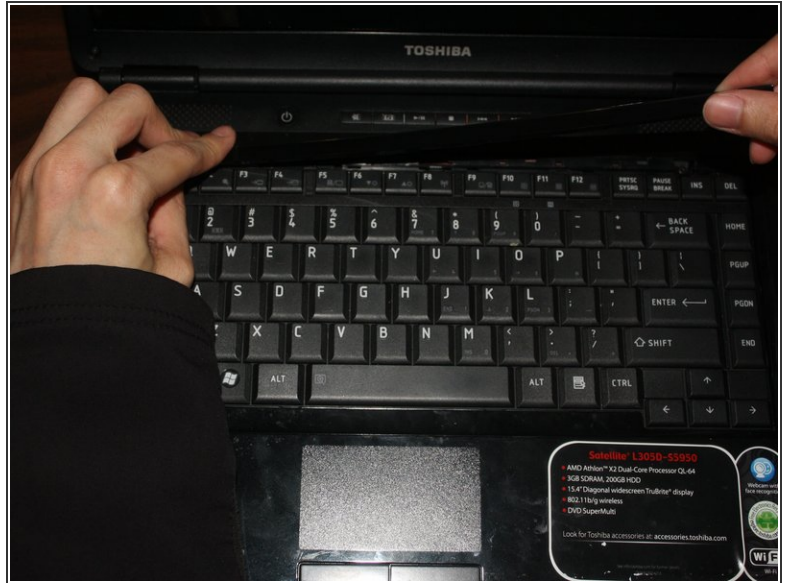
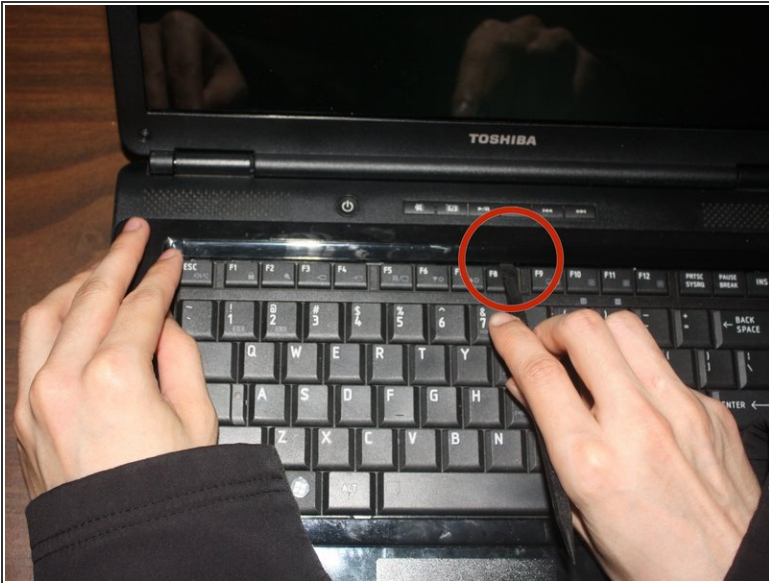
- While holding the left battery lock to the left, lift up the battery using the tab located on the top center of the battery.

Step 4



- Remove the battery from the laptop.

Step 5 — Keyboard



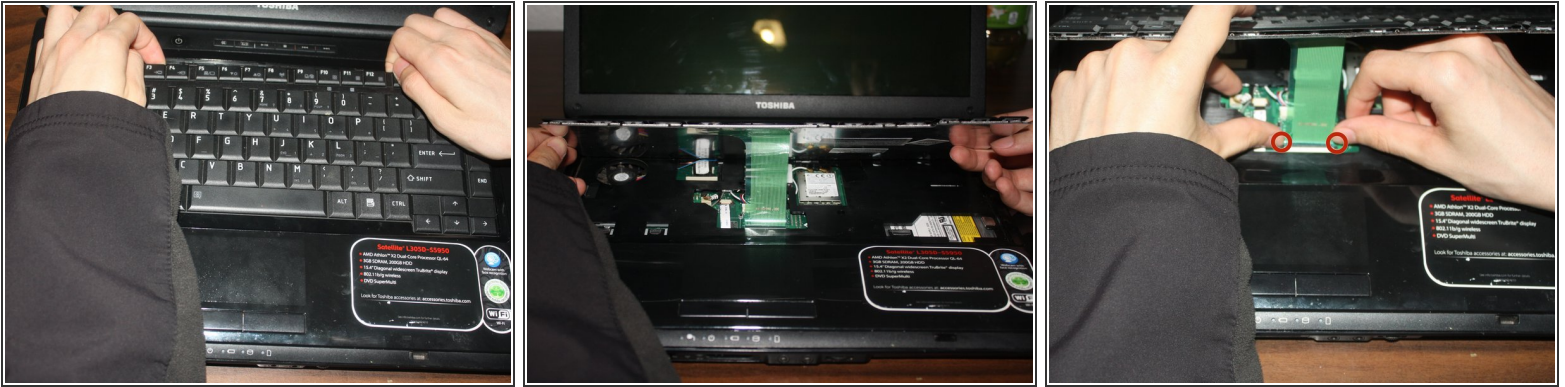
- Locate the plastic strip at the top of the keyboard.
- Use a pry tool to remove the plastic strip.
- Using your hands pull out the rest of the plastic strip.

Step 6



- Use a phillips head #0 screwdriver to remove the two 3.75mm screws holding the keyboard in place.

Step 7



- Lift up the top of the keyboard to remove it.
- ⚠ Under the keyboard there is a ribbon cable connecting the keyboard to the laptop. Do not just quickly pull out the keyboard.
- Unlock the ribbon cable by pushing on the locks that are located on both sides of ribbon cable.
- Unplug the ribbon cable from the laptop.

Step 8



- Remove the keyboard completely from the laptop.

To reassemble your device, follow these instructions in reverse order.