



Toshiba Satellite L35-S2174 Battery Replacement

This guide will assist you with removing the battery from a Toshiba Satellite L35-S2174 Laptop.

Written By: Amani Mitchell



INTRODUCTION

The underside Satellite L35-S2174 has a detachable 4-cell 2,000 mAH battery. You must remove the battery before attempting to repair the device for the safety of yourself and the device.

Step 1 — Battery



- ⚠ Turn the laptop off to prevent the possibility of electric shock or damage to the computer.
- Flip the laptop so that the bottom is facing upwards.

Step 2



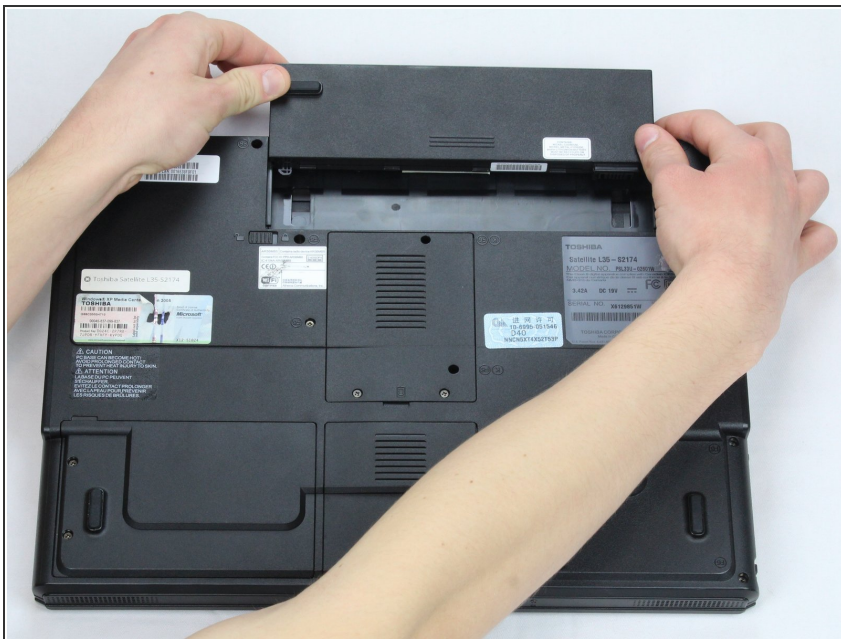
- Slide the battery lock switch to the left.

Step 3



- Pull the sliding switch to the right and continue to hold it in this position.

Step 4



- While holding the switch, slide the battery away from you.
- ☑ You do not need to hold the switch when putting the battery back into the laptop.

To reassemble your device, follow these instructions in reverse order.