



Toshiba Satellite L35-S2174 Keyboard Replacement

This guide will assist you with removing the keyboard from a Toshiba Satellite L35-S2174 Laptop.

Written By: Amani Mitchell



INTRODUCTION

The keyboard allows you to control your computer. If the keyboard isn't working, it may cause many problems with computer interactions. Replacing the keyboard can fix keyboard-related mechanical problems.



TOOLS:

- [JIS Driver Set](#) (1)
 - [Spudger](#) (1)
-

Step 1 — Battery



- ⚠ Turn the laptop off to prevent the possibility of electric shock or damage to the computer.
- Flip the laptop so that the bottom is facing upwards.

Step 2



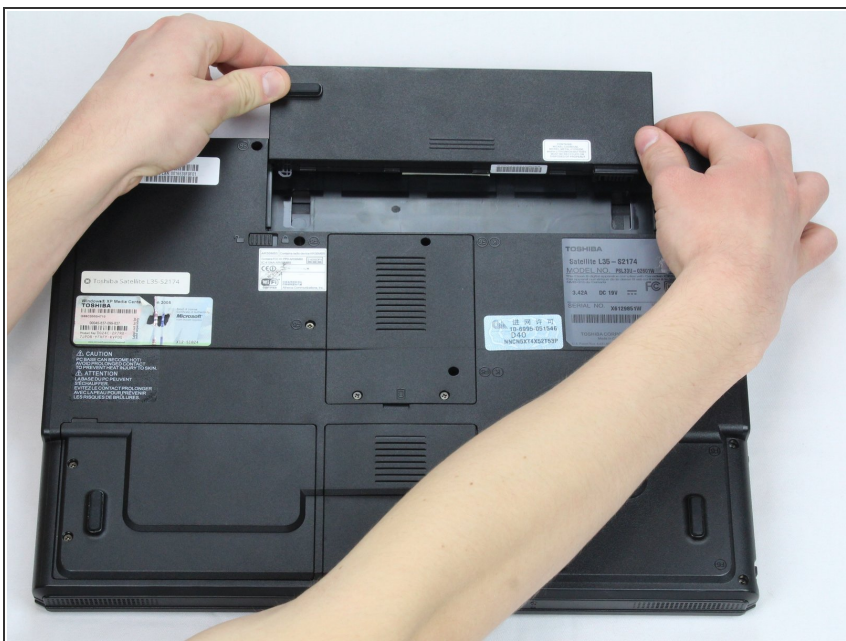
- Slide the battery lock switch to the left.

Step 3



- Pull the sliding switch to the right and continue to hold it in this position.

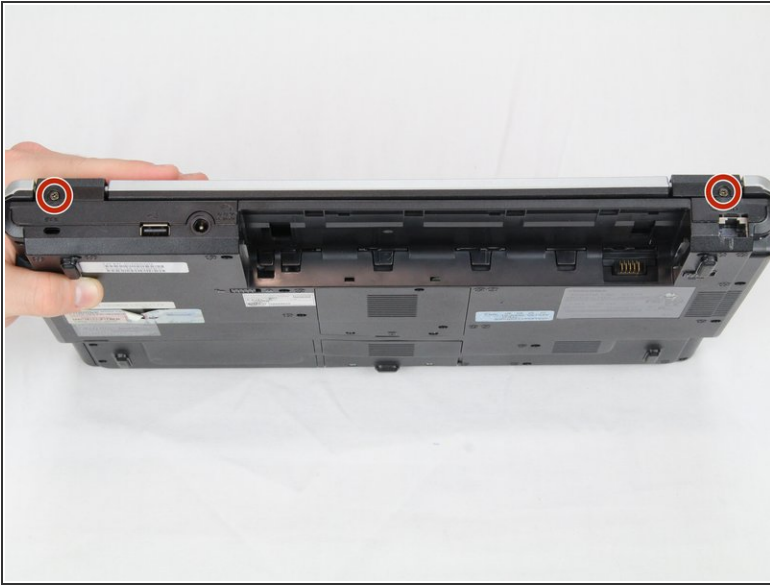
Step 4



- While holding the switch, slide the battery away from you.

- ☑ You do not need to hold the switch when putting the battery back into the laptop.

Step 5 — Keyboard



- Remove the two circled 4mm screws with a J1 screwdriver.

Step 6



- Remove the two circled 5mm screws with a J1 screwdriver.

Step 7



- Use a spudger to pry up the plastic panel between the keyboard the screen.
- Repeat on opposite side of laptop.

⚠ The panel may be difficult to remove.

- Tilt the laptop's screen back.
- Lift the panel and remove it from the laptop.

Step 8



⚠ There is a ribbon cable underneath the keyboard. Don't lift the keyboard too forcefully or you may break the ribbon cable.

- Unclip the keyboard from the laptop by lifting it.
- Slide the keyboard slightly towards the screen.
- Lift the keyboard out of the way.

Step 9



- Pull the ribbon cable straight out of the connector.
- ★ To reinstall the cable, hold it near the end and push it straight into the connector, being careful not to kink the cable.

To reassemble your device, follow these instructions in reverse order.