



Toshiba Satellite L35-S2174 Screen Replacement

This guide will assist you with removing the screen from a Toshiba Satellite L35-S2174 Laptop.

Written By: Amani Mitchell



INTRODUCTION

The laptop screen is one of the most important parts of the laptop. If its screen is damaged, it can impair your usage of your laptop. Replacing the screen can fix any visual problems you have.



TOOLS:

- [JIS Driver Set](#) (1)
-

Step 1 — Battery



- ⚠ Turn the laptop off to prevent the possibility of electric shock or damage to the computer.
- Flip the laptop so that the bottom is facing upwards.

Step 2



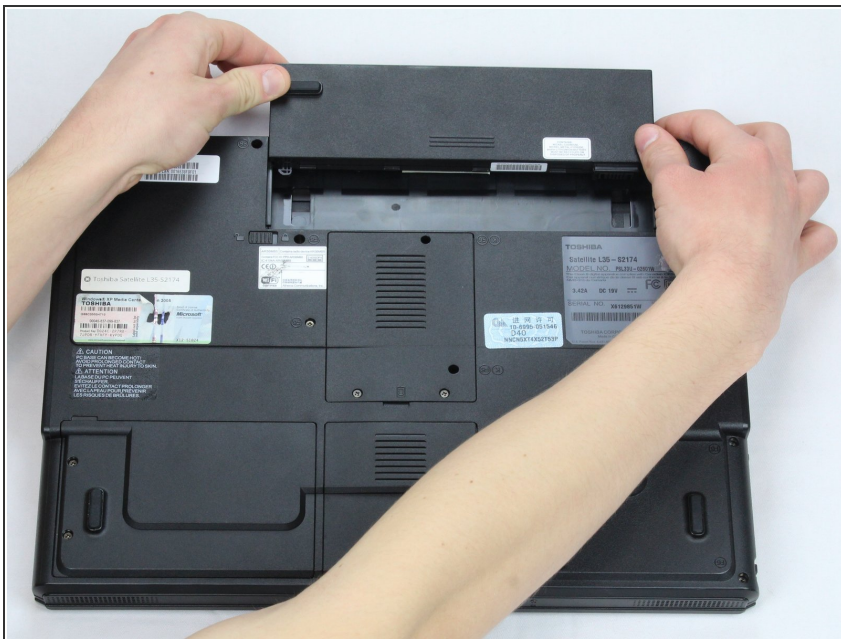
- Slide the battery lock switch to the left.

Step 3



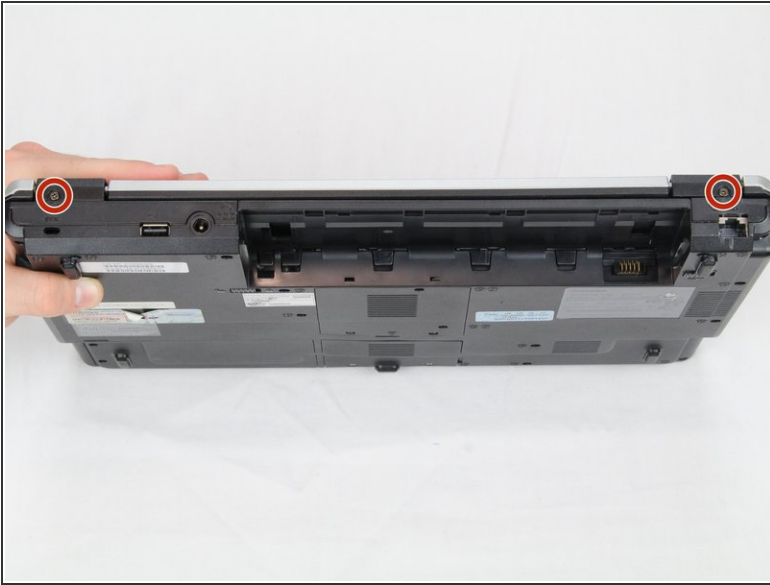
- Pull the sliding switch to the right and continue to hold it in this position.

Step 4



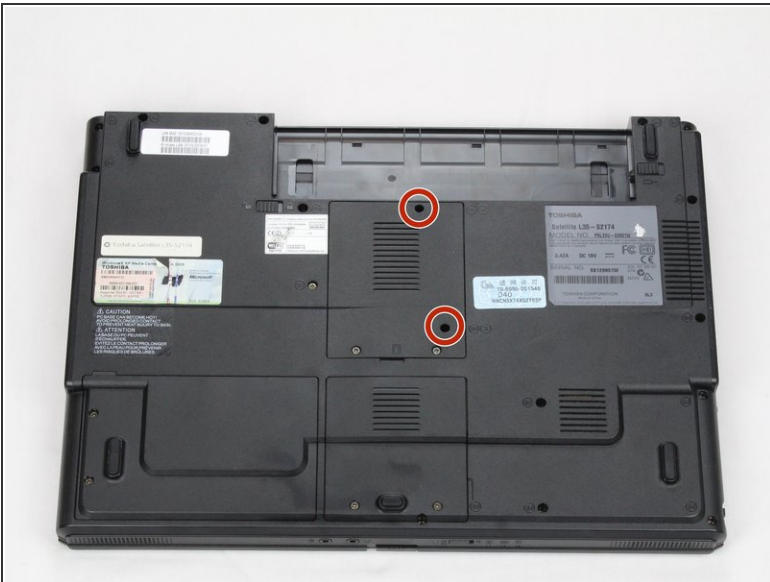
- While holding the switch, slide the battery away from you.
- ☑ You do not need to hold the switch when putting the battery back into the laptop.

Step 5 — Keyboard



- Remove the two circled 4mm screws with a J1 screwdriver.

Step 6




- Remove the two circled 5mm screws with a J1 screwdriver.

Step 7




- Use a spudger to pry up the plastic panel between the keyboard the screen.
- Repeat on opposite side of laptop.

 The panel may be difficult to remove.

- Tilt the laptop's screen back.
- Lift the panel and remove it from the laptop.

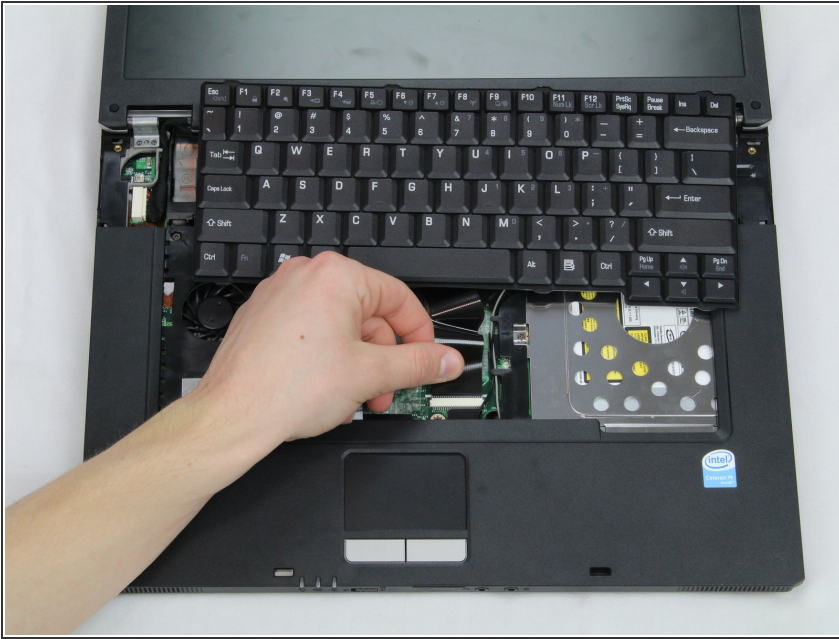
Step 8



 There is a ribbon cable underneath the keyboard. Don't lift the keyboard too forcefully or you may break the ribbon cable.

- Unclip the keyboard from the laptop by lifting it.
- Slide the keyboard slightly towards the screen.
- Lift the keyboard out of the way.

Step 9



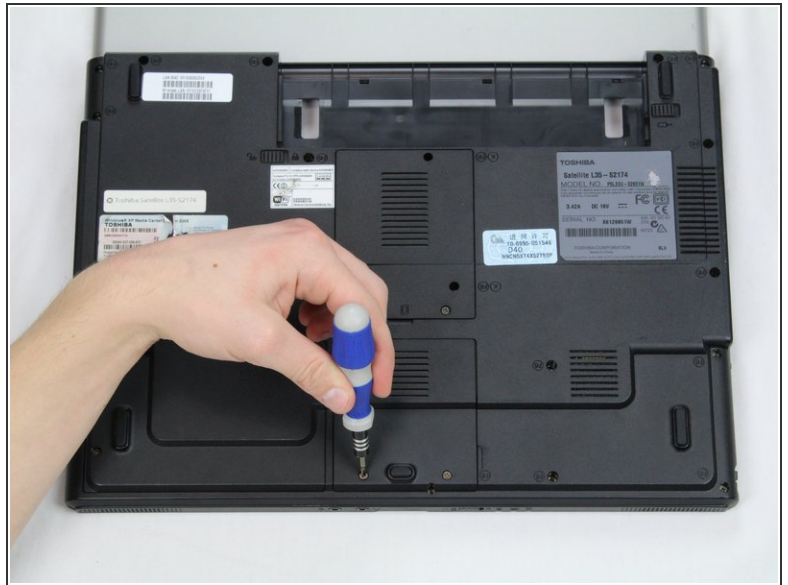
- Pull the ribbon cable straight out of the connector.
- ★ To reinstall the cable, hold it near the end and push it straight into the connector, being careful not to kink the cable.

Step 10 — Screen



- Remove the two circled 5mm screws with a J1 screwdriver.

Step 11



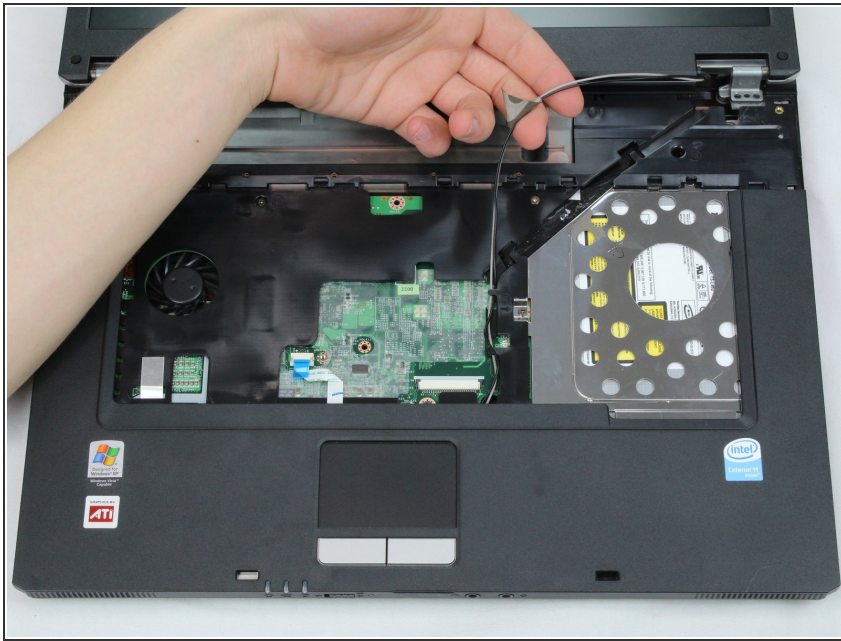
- Unscrew the two circled screws with a J1 screwdriver. The screws will remain attached to the plastic panel.
- Lift the panel and remove it from the laptop.

Step 12



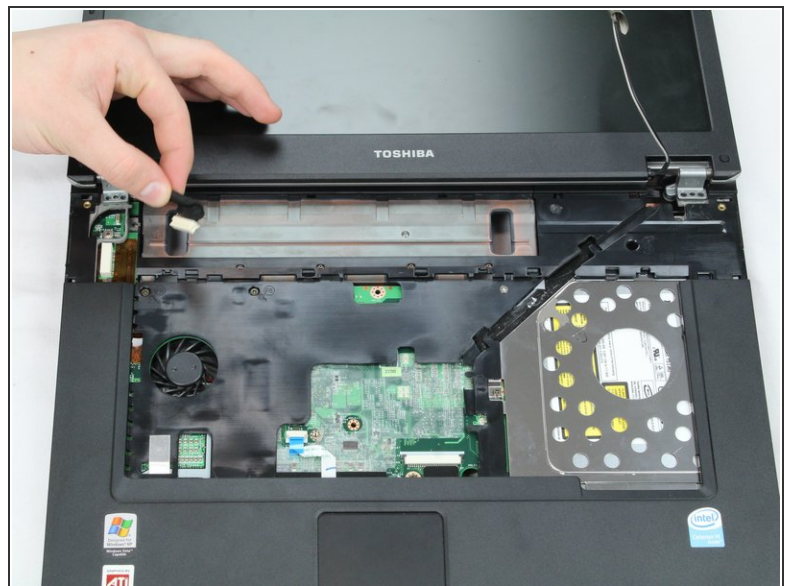
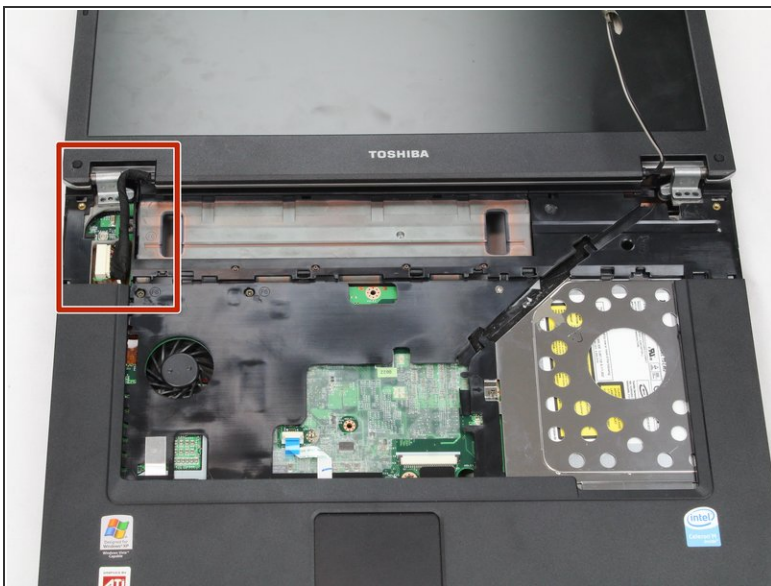
- Gently lift and detach the grey and black antennae cables that are attached to the blue circuitboard.
- ☑ To reinstall, hold the connectors in place and gently press them straight down. The connectors “snap” into their sockets much like the metal snaps on a jacket.

Step 13



- Flip the laptop over.
- Pull the black and grey cables out of the laptop, towards the laptop screen.
- ⓘ The cables are connected to the screen.

Step 14



- Detach the black cable from the computer by pulling it to the right.

Step 15



- Lift the screen away from the laptop.

To reassemble your device, follow these instructions in reverse order.