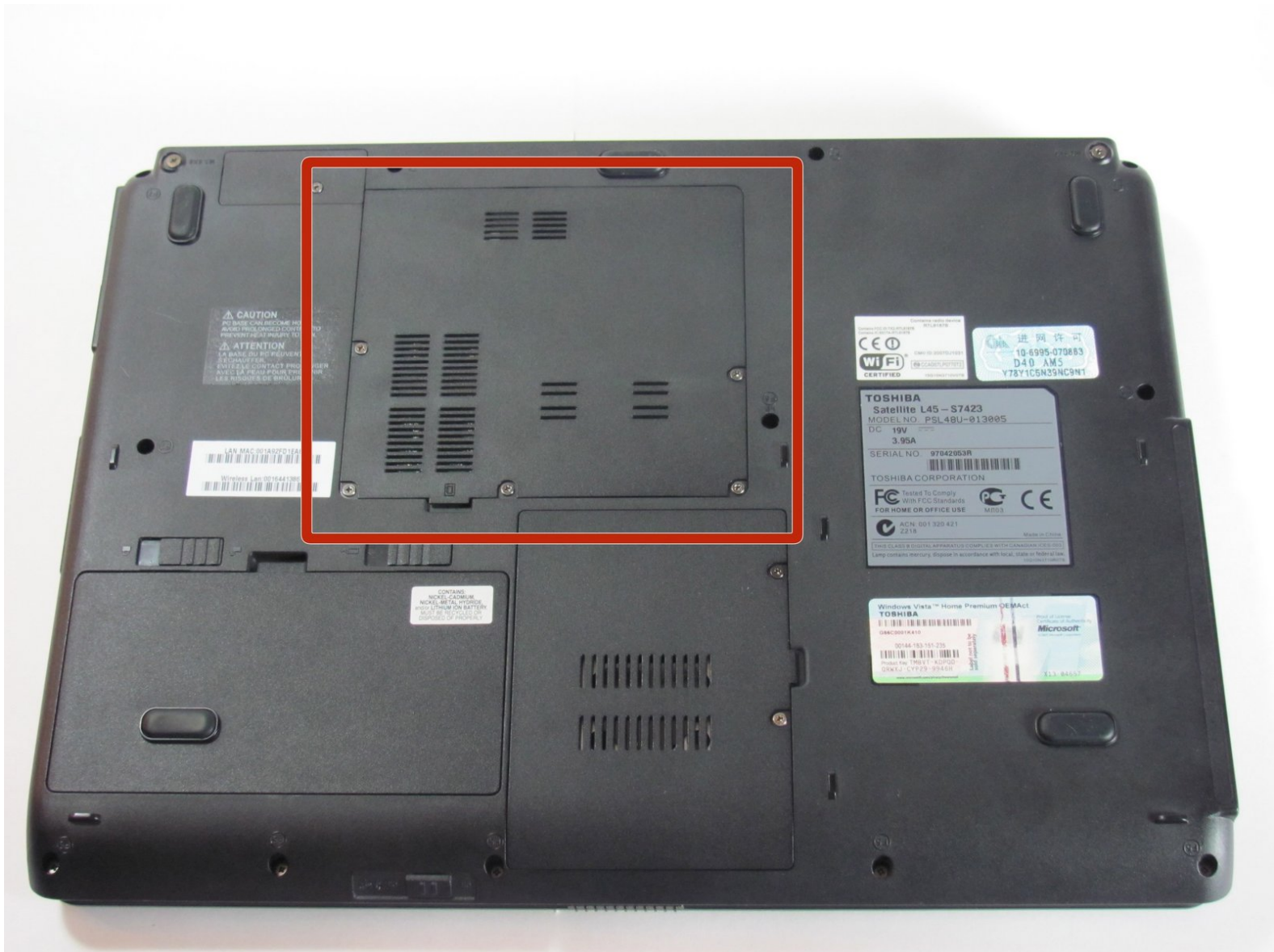




# Toshiba Satellite L45-S7423 Bottom Access Panel Replacement

This guide shows the user how to remove the bottom access panel on the Toshiba Satellite L45-S7423.

Written By: Stephen Sippel



---

## INTRODUCTION

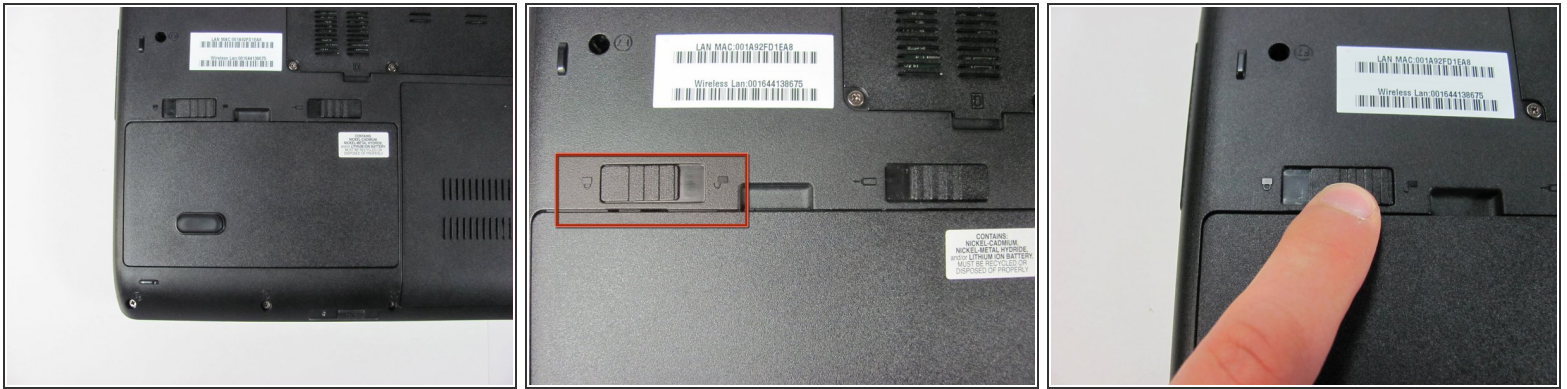
The bottom access panel is designed to be quickly and easily removed to allow the consumer quick access to components of the the computer including RAM, the wireless card, and the dial up modem. This panel requires only the the removal of a five screws to gain the user access.



### TOOLS:

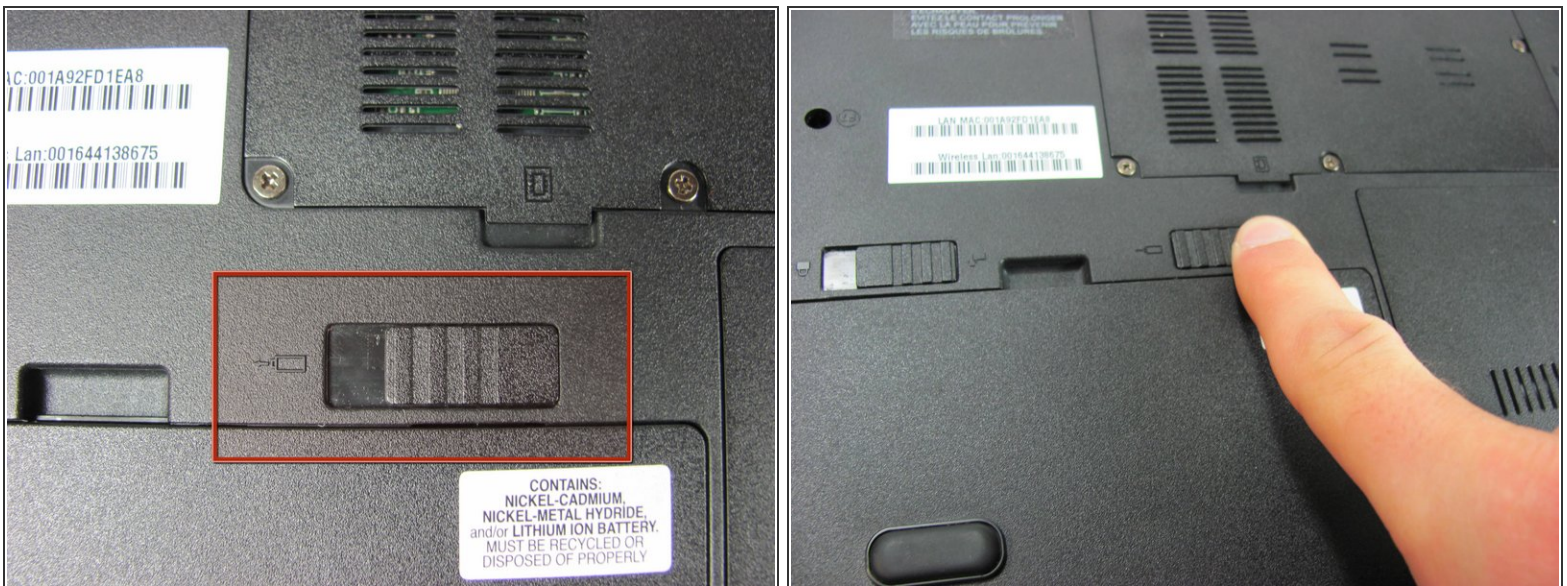
- [Phillips #00 Screwdriver](#) (1)
-

## Step 1 — Battery



- Make sure the battery lock switch is switched to the unlocked position.
- The battery is unlocked when the battery lock switch is slid to the side with an image of an unlocked lock.

## Step 2



- Slide the battery release switch to the left.
- ⓘ The switch is spring loaded, so you must hold the switch in place while removing the battery.

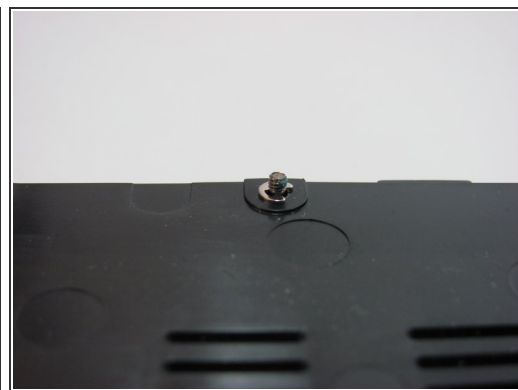
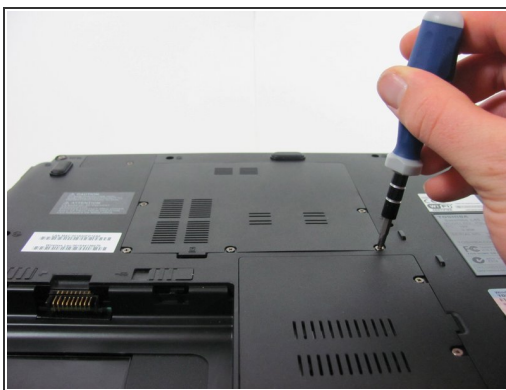
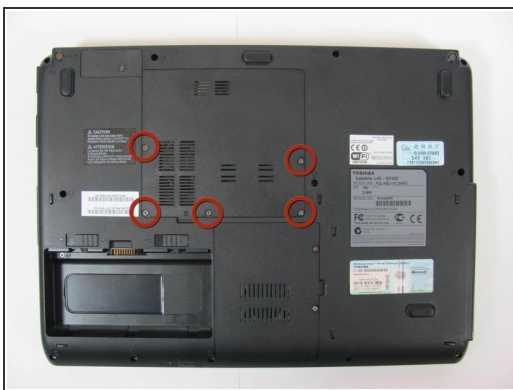


### Step 3



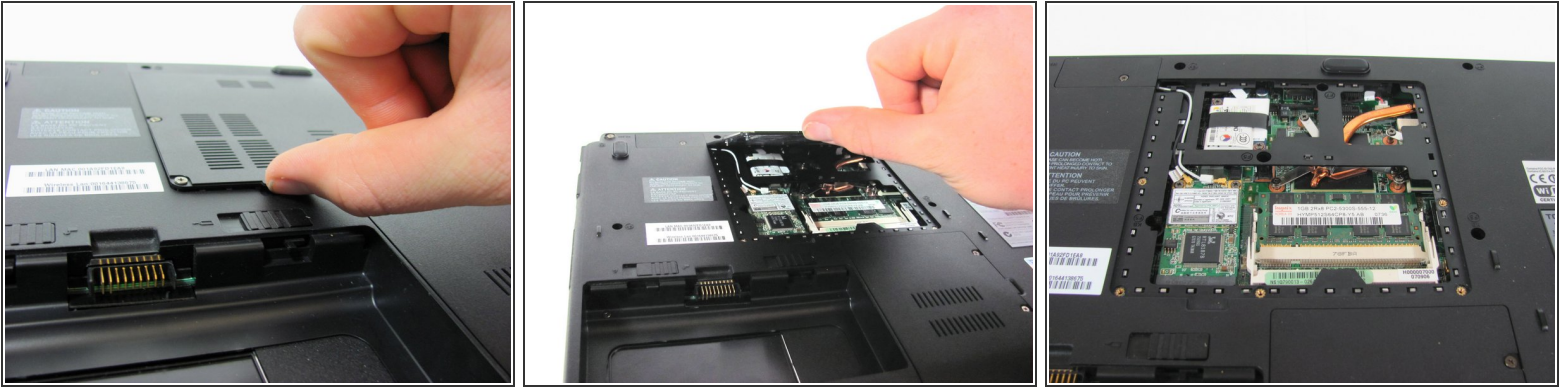
- Using a finger, lift up the battery.
- ☛ The battery release switch must be held in place.

### Step 4 — Bottom Access Panel



- Remove the 5 Phillips screws holding the panel in place.
- ⓘ These screws are permanently fastened to the panel; they are designed to be removed only partially to avoid loss.

## Step 5



- Use a finger to remove the panel by lifting up on the provided removal tab.

To reassemble your device, follow these instructions in reverse order.