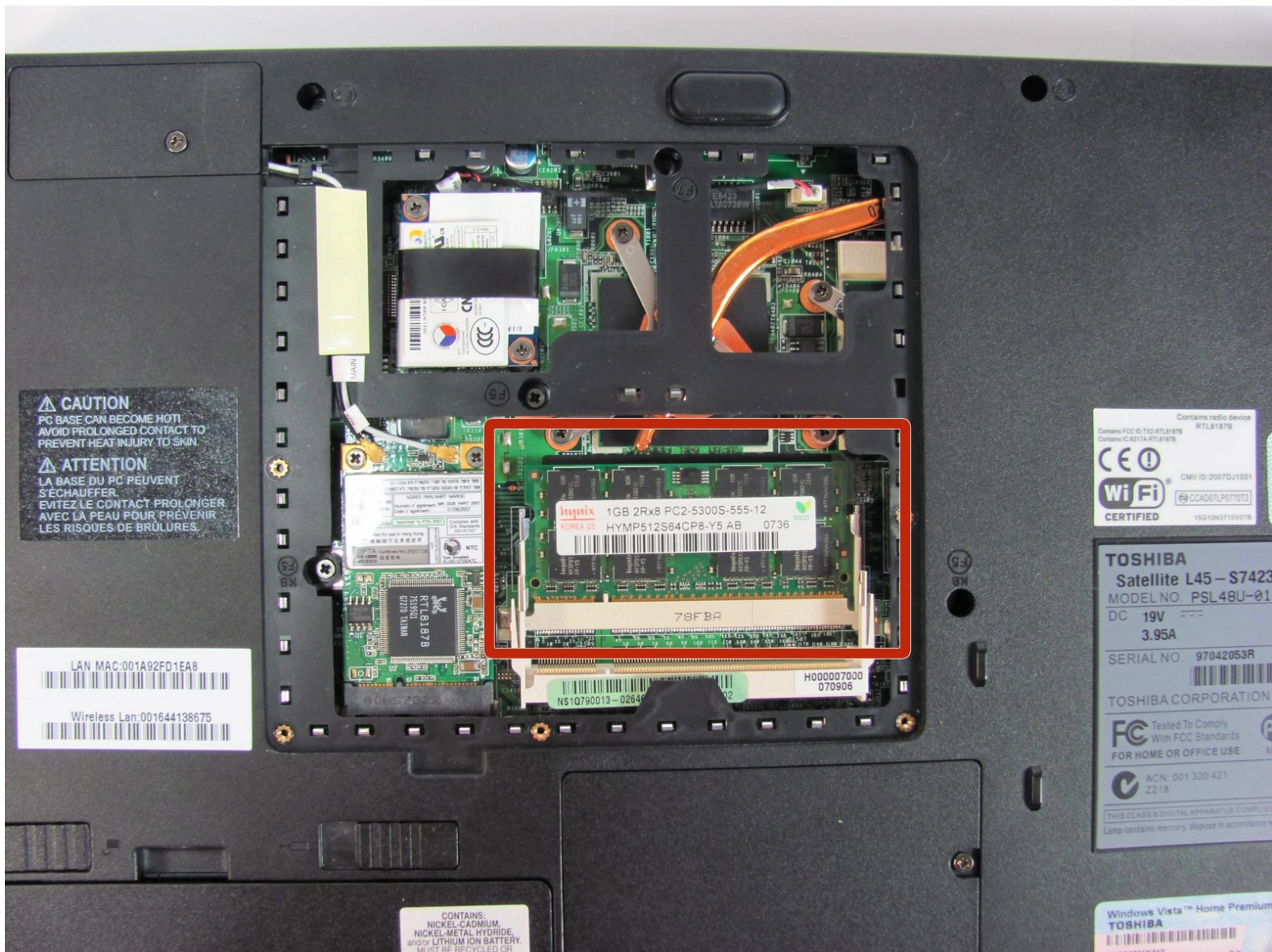




Toshiba Satellite L45-S7423 RAM Replacement

This guide shows the user how to remove and install RAM in the Toshiba Satellite L45-S7423.

Written By: Stephen Sippel



INTRODUCTION

This guide will demonstrate to the user how to remove and install new RAM into their laptop. RAM is often upgraded on the laptop to increase performance and is therefore made easy to replace.



TOOLS:

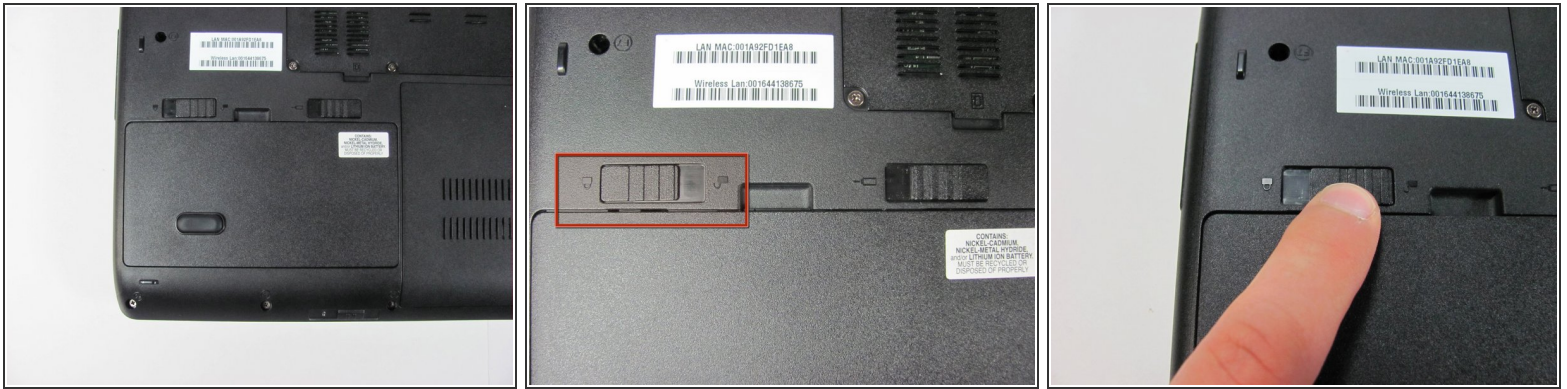
- [Phillips #00 Screwdriver](#) (1)



PARTS:

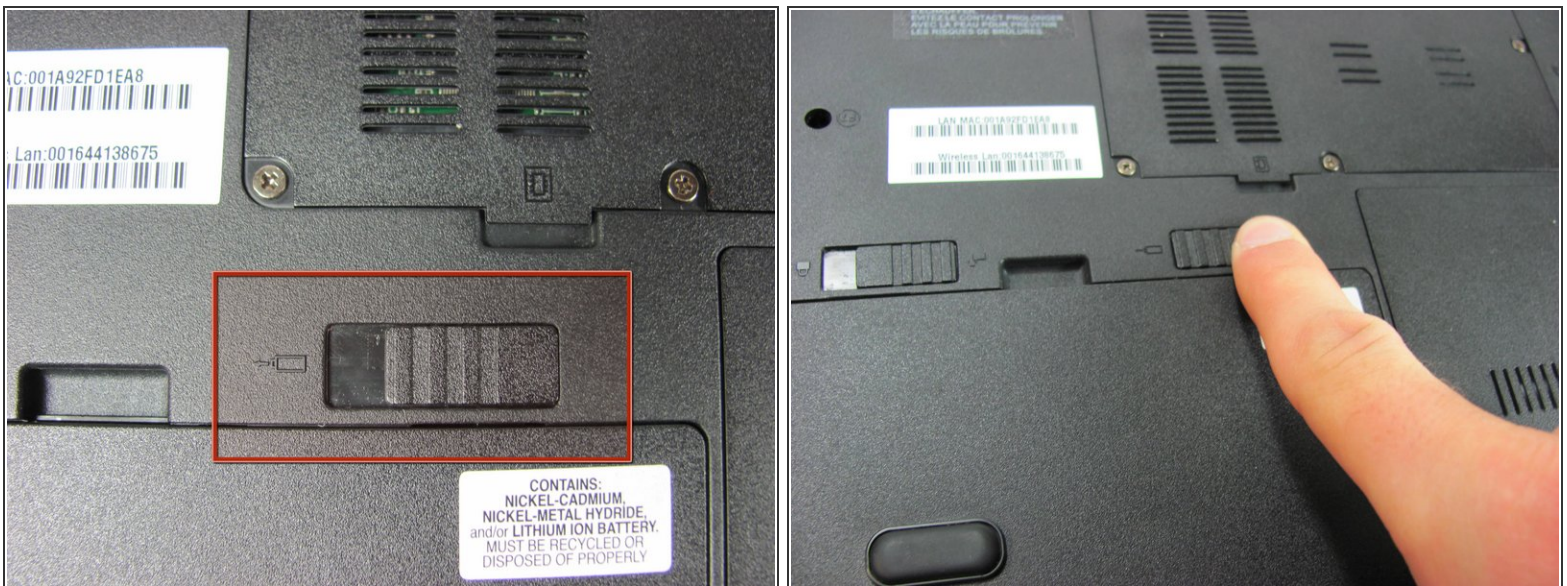
- [PC2-5300 1 GB RAM Chip](#) (1)

Step 1 — Battery



- Make sure the battery lock switch is switched to the unlocked position.
- The battery is unlocked when the battery lock switch is slid to the side with an image of an unlocked lock.

Step 2



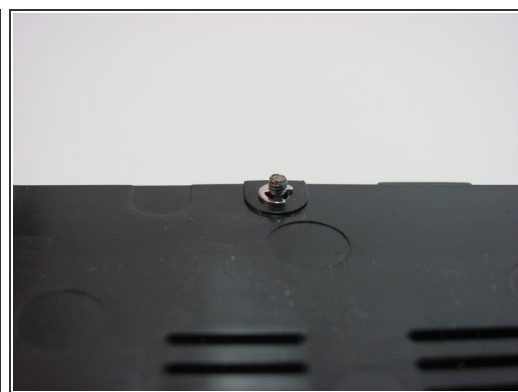
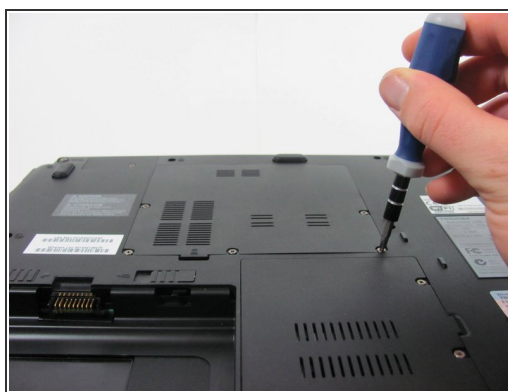
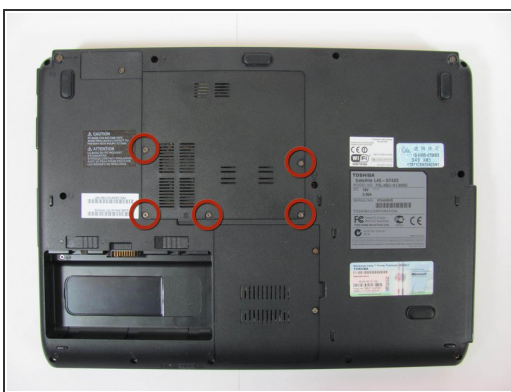
- Slide the battery release switch to the left.
- ⓘ The switch is spring loaded, so you must hold the switch in place while removing the battery.

Step 3



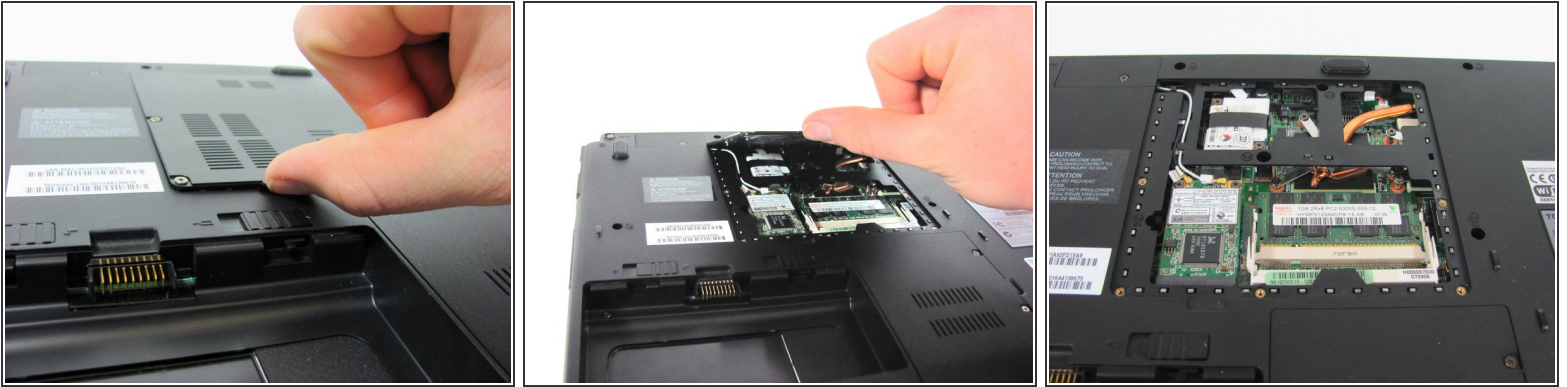
- Using a finger, lift up the battery.
- ☑ The battery release switch must be held in place.

Step 4 — Bottom Access Panel



- Remove the 5 Phillips screws holding the panel in place.
- ⓘ These screws are permanently fastened to the panel; they are designed to be removed only partially to avoid loss.

Step 5



- Use a finger to remove the panel by lifting up on the provided removal tab.

Step 6 — RAM



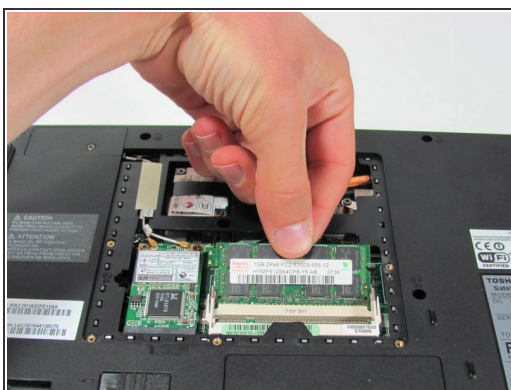
- Pull apart the two tabs holding the RAM in place.

Step 7



- Upon release, RAM will automatically pop up.

Step 8



- Gently pull on RAM to remove.

To reassemble your device, follow these instructions in reverse order.